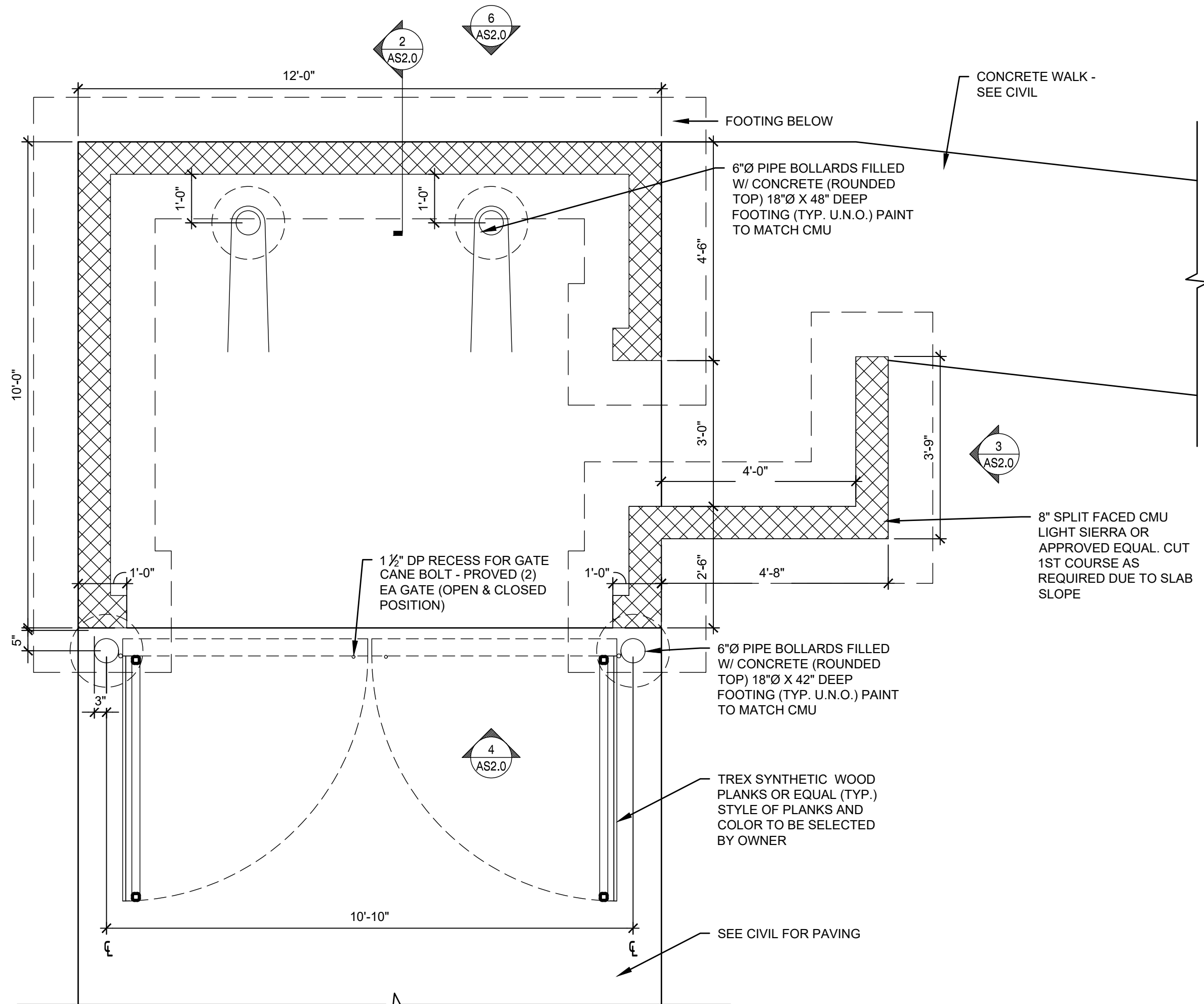


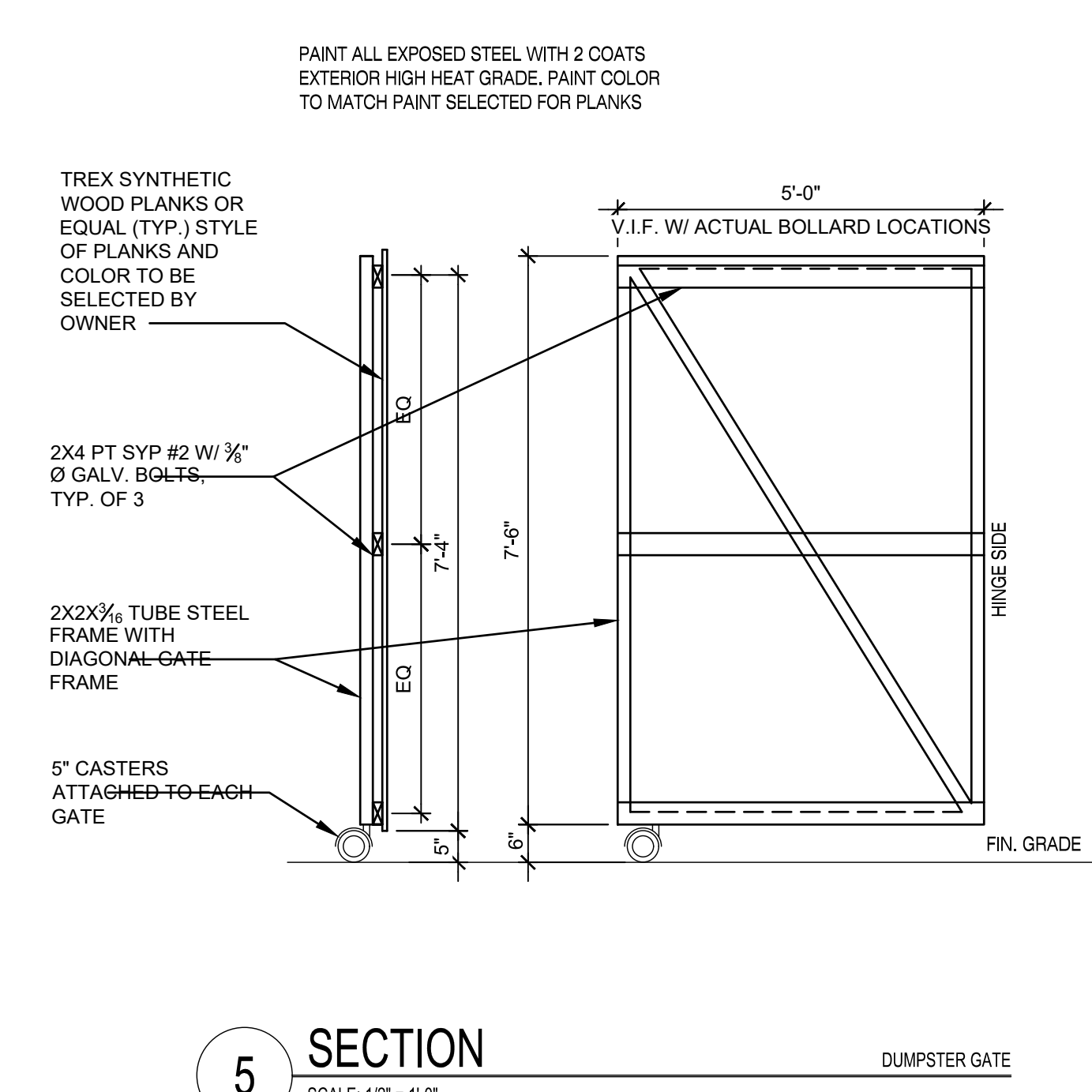
**4 ELEVATION**  
SCALE: 1/2" = 1'-0"  
FRONT

**3 ELEVATION**  
SCALE: 1/2" = 1'-0"  
SIDE

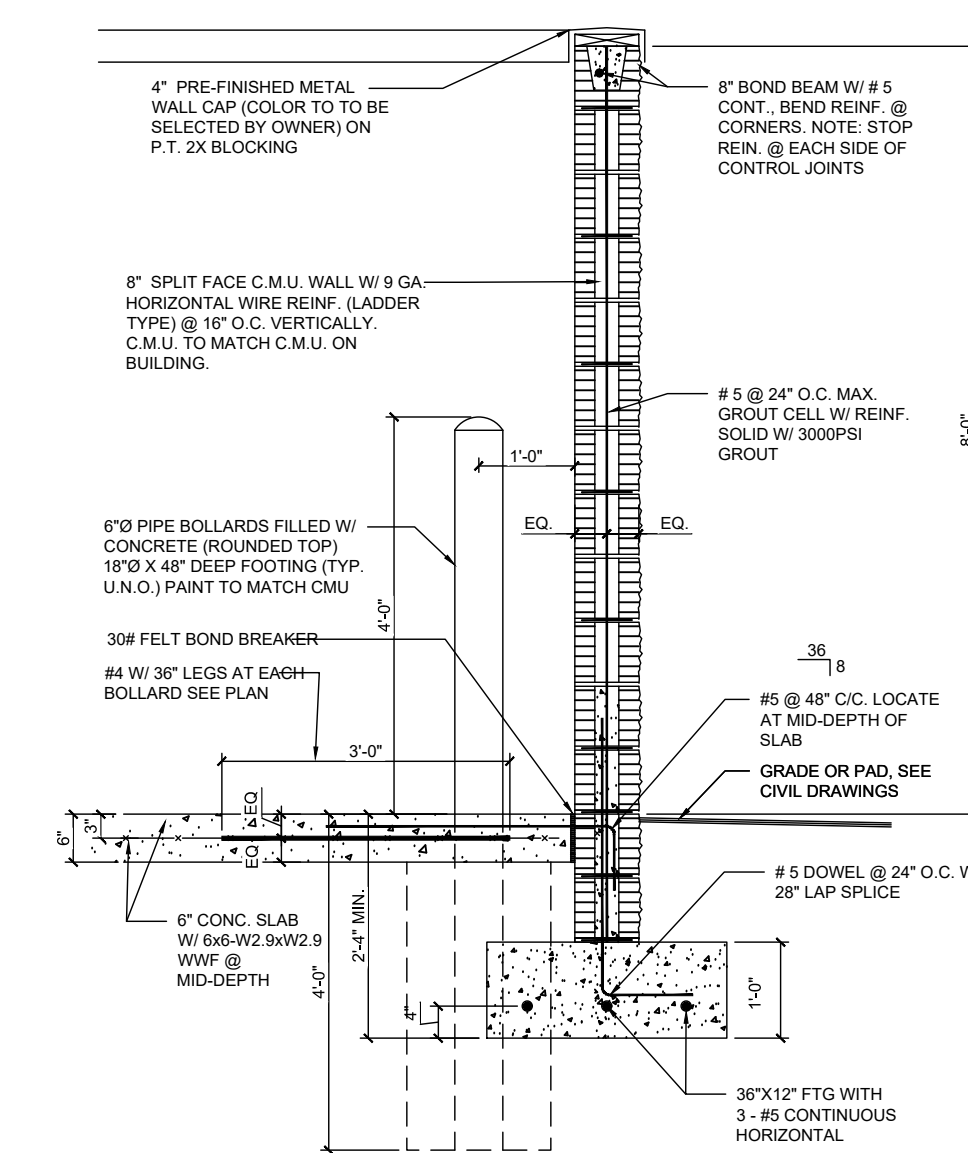
**6 ELEVATION**  
SCALE: 1/2" = 1'-0"  
SIDE



**1 ENLARGED PLAN**  
SCALE: 1/2" = 1'-0"  
DUMPSTER ENCLOSURE



**5 SECTION**  
SCALE: 1/2" = 1'-0"  
DUMPSTER GATE



**2 WALL SECTION**  
SCALE: 3/4" = 1'-0"  
DUMPSTER

**DUMPSTER ENCLOSURE DETAILS**

Copyright 2022  
All Rights Reserved

the  
design  
engineering  
company, inc.

ENGINEERS • SURVEYORS • PLANNERS

2208 WELSH INDUSTRIAL COURT  
ST. LOUIS, MISSOURI 63146  
(314) 692-8888 FAX: (314) 692-8888 [www.thedesignengineering.com](http://www.thedesignengineering.com)  
110 Car. of Aviation • Engineering, Surveying & Planning  
14200 E. Mississippi Ave. • Eng. Design & Engineering, Inc. • 63011  
E-Design, Professional Firm, Reg. Prof. Design & Engineering, License # 0000029

NO.	DATE	BY	CHKD.	REVISIONS
2	04-26-22	EAS	EAS	City of Ofallon comments
4	05-13-22	EAS	EAS	BID SET

FILE: G:\1000\2103 RANGE USA Indoor Gun Range-SVPPP-detail.dwg  
PLOTTED: 05/20/22 12:28 PM

Prepared for:  
**PRIMAX PROPERTIES, LLC**  
1100 E. Morehead Street  
Charlotte, NC 28204

CONSTRUCTION DETAILS 2  
**RANGE USA INDOOR GUN RANGE**  
9100 Veterans Memorial Parkway  
OFallon, MO

Eric A. Skelton - Professional Engineer  
PE-2001150069

STATE OF MISSOURI  
ERIC A. SKELTON  
NUMBER  
E-2001150069  
PROFESSIONAL ENGINEER  
06-09-22

Designed: EAS  
Drawn: EAS  
Checked: EAS  
Date: March 19, 2022

Project Number: 21100  
Sheet Number: C7.1 of