

CONSTRUCTION & EROSION CONTROL NOTES:

- 1. ANY LAND CLEARING, CONSTRUCTION, OR DEVELOPMENT INVOLVING THE MOVEMENT OF EARTH SHALL BE IN ACCORDANCE WITH THE STORM WATER POLLUTION PREVENTION PLAN, AND THE PERSON ISSUING A SITE DISTURBANCE PERMIT ASSUMES AND ACKNOWLEDGES RESPONSIBILITY FOR COMPLIANCE WITH THE CITY OF BRIDGETON LAND DISTURBANCE CODE AND THE APPROVED STORM WATER POLLUTION PREVENTION PLAN AT THE SITE OF THE PERMITTED ACTIVITY.

OWNER INFORMATION: PRIMAX PROPERTIES, LLC 1100 EAST MOREHEAD STREET CHARLOTTE, NC 28204 (704) 954-7216

24-HOUR EMERGENCY CONTACT: PRIMAX PROPERTIES, LLC 1100 E. MOOREHEAD STREET CHARLOTTE, N.C. 28204 (704) 905-2416 CONTACT: CHRIS NEILL

SITE ADDRESS: 15 CASTLE LANE O'FALLON, MISSOURI TAX I.D. NUMBER: 2-0141-0020-00-0002.0000000

NOTE: ACCORDING TO AVAILABLE INFORMATION, THE STORM WATER RUNOFF FROM THIS PROJECT DOES NOT DIRECTLY FLOW INTO A "VALUABLE RESOURCE WATER" AS DEFINED BY MoDNR.

SITE INFORMATION: AREA OF DISTURBANCE: 2.29 ACRES

ESTIMATED EARTHWORK QUANTITIES:

(FOR PERMITTING PURPOSES ONLY, CONTRACTOR TO CALCULATE OWN QUANTITIES FOR BIDDING) CUT - 1,583' CU. YDS. FILL - 1,623' CU. YDS. FILL +10% - 1,785 CU. YDS. SHORTAGE = 202± CU. YDS. (DOES NOT INCLUDE SPOLS FROM UTILITIES OR FOUNDATIONS.) *FIGURED TO NEW PAVEMENT SUBGRADE

HAUL ROUTE:

THE CONTRACTOR MUST SUBMIT A HAUL ROUTE TO CITY OF OFALLON AND MODOT PRIOR TO ANY HAULING OPERATIONS.

- 17. ALL EXISTING STRUTS, SIDEWALKS, CONCRETE OR ASPHALT SURFACES, CURBING, WALLS, SEWERS, FENCES, TREES, SHRUBS, AND DEBRIS NOTED FOR REMOVAL ON THE SITE SHALL BE DEMOLISHED, REMOVED FROM THE SITE, AND PROPERLY DISPOSED OF IN A MANNER APPROVED BY THE REGULATING GOVERNMENTAL AGENCIES. CONTRACTOR SHALL BE RESPONSIBLE FOR CONTACTING ALL UTILITY COMPANIES AFFECTED OR IN THE VICINITY OF PROPOSED DEMOLITION.

PERMIT HOLDER REQUIREMENTS

- 1. ANY LAND CLEARING, CONSTRUCTION OR DEVELOPMENT INVOLVING THE MOVEMENT OF EARTH SHALL BE IN ACCORDANCE WITH THE STORM WATER POLLUTION PREVENTION PLAN, AND THE PERSON ISSUING A SITE DISTURBANCE PERMIT ASSUMES AND ACKNOWLEDGES RESPONSIBILITY FOR COMPLIANCE WITH THE LOCAL LAND DISTURBANCE CODE AND THE APPROVED STORM WATER POLLUTION PREVENTION PLAN AT THE SITE OF THE PERMITTED ACTIVITY.

ROUTINE INSPECTION SCHEDULE

- The permit-holder shall contact the CITY/MDNR Inspector for a site inspection at least two working days prior to the following: 1. Start of construction; 2. Installation of sediment and erosion control measures;

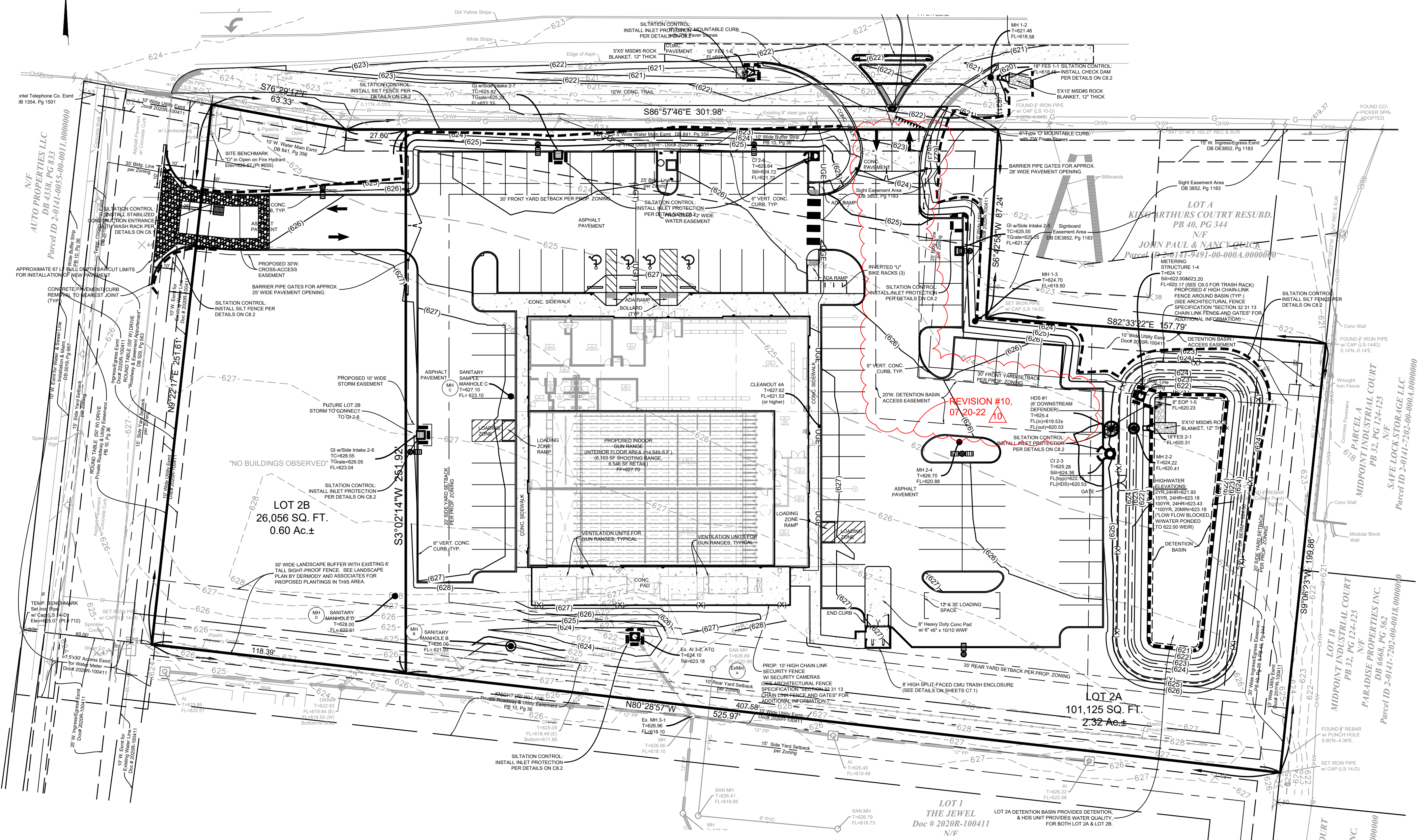
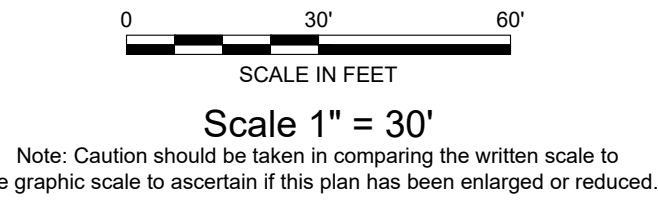
Inspections by the permit-holder's inspector shall be regularly performed on land disturbance sites, including all erosion and sediment control measures, outfall and off-site receiving waters per the following schedule:

- 1. At least once per week; 2. No later than 48 hours after a heavy rainfall event that produces a quarter inch or more of rain.

All inspections shall be documented in writing on weekly reports and heavy rainfall reports with copies submitted to the City of Ofallon.

The permit-holder shall notify the Contractor of any deficiencies identified. If any deficiencies are found with the erosion control measures the Contractor shall have 48 hours to correct the deficiencies. Otherwise, the City of Ofallon may issue a Notice of Violation or Stop Work Order.

REVISION #10, 07-20-22



ARE ENDANGERED OR THREATENED SPECIES AND CRITICAL HABITATS ON OR NEAR THE PROJECT AREA? CLAYTON ENGINEERING CONDUCTED A REVIEW OF ANY POTENTIAL ENDANGERED/THREATENED SPECIES AND CRITICAL HABITAT ON OR NEAR THE RANGE USA GUN RANGE SITE. CLAYTON ENGINEERING REVIEWED THE ENDANGERED SPECIES ACT (ESA) REVIEW PROCEDURES AND ENDANGERED SPECIES LIST FOR ST. CHARLES COUNTY, MISSOURI AVAILABLE AT HTTP://WWW.FWS.GOV/OWM/ENDANGEREDLISTS/MISSOURI/SPP.HTML (ACCESSED 03/17/2022).

ARE THERE ANY HISTORIC SITES ON OR NEAR THE CONSTRUCTION SITE? CLAYTON ENGINEERING REVIEWED THE ST. CHARLES COUNTY NATIONAL REGISTER LISTINGS AVAILABLE FROM THE MISSOURI DEPARTMENT OF NATURAL RESOURCES AND THE MISSOURI STATE HISTORIC PRESERVATION OFFICE AT HTTP://DNR.MO.GOV/SHP/STCHARLES.HTM (ACCESSED ON 03/17/2022) AND THE NATIONAL REGISTER INFORMATION SYSTEM AVAILABLE FROM THE NATIONAL PARK SERVICE AT HTTP://WWW.NPS.GOV/NR/RESEARCH INCLUDING THE ONLINE DATABASE AT HTTP://NHHP.FOCUS.NPS.GOV/ (ACCESSED 03/17/2022) TO DETERMINE IF ANY HISTORIC SITES ARE ON OR NEAR THE RANGE USA GUN RANGE SITE. NO KNOWN HISTORIC SITES WERE DETERMINED FROM THE REVIEW.

Additional erosion control measures may be required during construction that are not shown on these plans. Contractor is responsible for installing and maintaining temporary and/or interim erosion control measures during construction progression or as required by the City and/or MDNR Inspector. Any changes/additions to the Storm Water Pollution Prevention Plan (SWPPP) shall be documented by the contractor and remain on file at the site.

----- SILT FENCE OR OTHER EROSION CONTROL BMP

the clayton engineering company, inc. ENGINEERS • SURVEYORS • PLANNERS 2288 WESCH INDUSTRIAL COURT ST. LOUIS, MISSOURI 63114-6222 (314) 692-8888 FAX: (314) 692-6888 claytoneng.com

REVISIONS table with columns: #, Date, Description. Includes revisions for minor building parking lot, city of ofallon comments, and new west gate location.

PRIMAX PROPERTIES, LLC 1100 EAST MOREHEAD STREET CHARLOTTE, NC 28204

Stormwater Pollution Prevention Plan Range USA Indoor Gun Range. Includes project number 21243, sheet number C8.0 of, and a circular professional seal for Eric A. Skelton, Professional Engineer, No. 07-20-22.

Table with columns: QUANTITY, EROSION CONTROL BMP / ITEM, EMERGENCY REPAIR QUANTITY (15%). Lists items like Siltation Control Fence, Check Dam, Inlet Protection, etc.

ALL QUANTITIES SHOWN ABOVE INCLUDE BASE BID & ALTERNATES FOR PERMITTING PURPOSES ONLY. CONTRACTOR TO CALCULATE OWN QUANTITIES FOR BIDDING. SOD TO BE USED IN WITHIN THE RIGHT-OF-WAY ON SLOPES STEEPER THAN 5:1 AND IN DRAINAGE SWALES (SEE NOTES). NOTE: ALL SWPPP EROSION CONTROL ITEMS ARE TEMPORARY EXCEPT FOR SEED & SOD AREAS.

The original signed and sealed of this drawing is on file at the office of The Clayton Engineering Company. Any modifications to this drawing shall release said The Clayton Engineering Company, the Engineer and/or Surveyor whose seal appears hereon from any liability resulting from said unauthorized modifications.

Call Before you DIG Dial 811 or TOLL FREE 1-800-344-7483 moicall.com MISSOURI ONE-CALL SYSTEM INC.

Underground facilities, structures & utilities have been plotted from available surveys, records & information, and therefore, do not necessarily reflect the actual existence, nonexistence, size, type, number of, or location of these facilities, structures, & utilities.

The Contractor shall be responsible for verifying the actual location of all underground facilities, structures, & utilities, either shown or not shown on these plans. The underground facilities, structures, & utilities shall be located in the field prior to any grading, excavation or construction of improvements. These provisions shall in no way absolve any party from complying with the Underground Facility Safety and Damage Prevention Act.