

VEGETATIVE ESTABLISHMENT FOR URBAN DEVELOPMENT SITES

APPENDIX A

Seeding Rates:

Permanent:

- Tall Fescue - 30 lbs./ac.
- Smooth Brome - 20 lbs./ac.
- Combined: Fescue @ 15 lbs./ac. and Brome @ 10 lbs./ac.

Temporary:

- Wheat or Rye - 150 lbs./ac. (3.5 lbs. per 1000 sq. ft.)
- Oats - 120 lbs./ac. (2.75 lbs. per 1000 sq. ft.)

Seeding Periods:

- Fescue or Brome: March 1 to June 1
- Wheat or Rye: August 1 to October 1
- Oats: March 15 to November 1

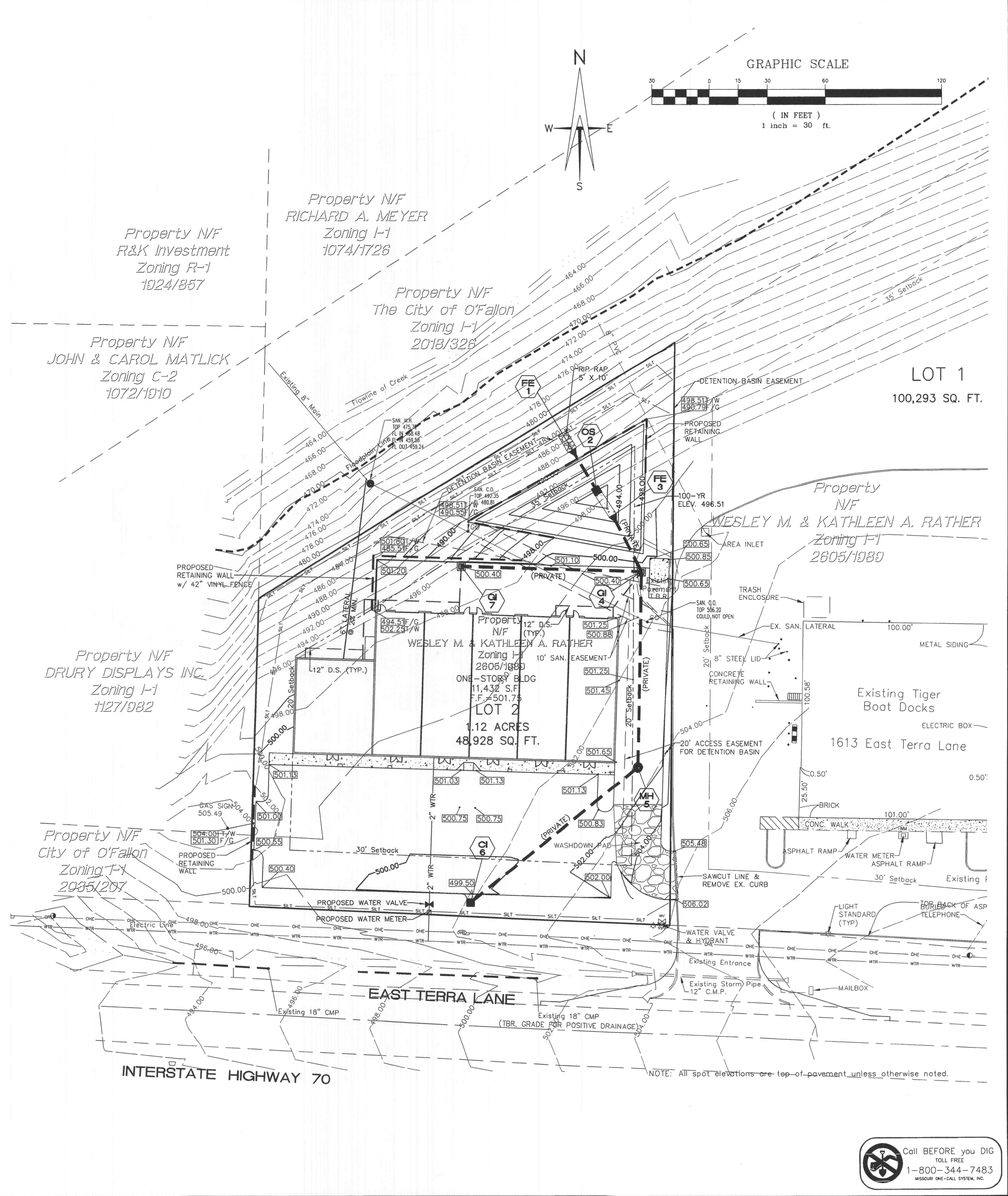
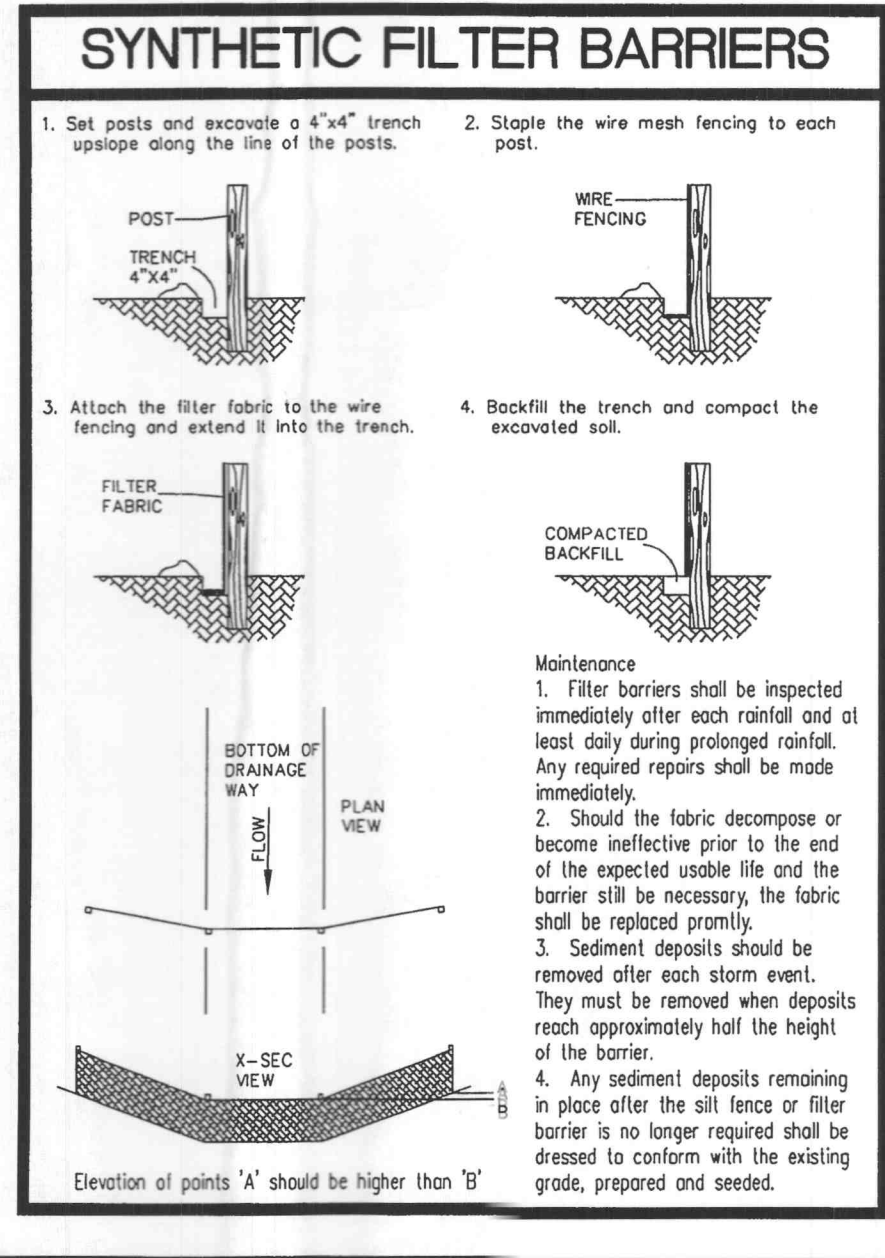
Mulch Rates:

- 100 lbs. Per 1,000 sq. ft. (4,356 lbs. per acre)

Fertilizer Rates:

- Nitrogen: 30 lbs./ac.
- Phosphate: 30 lbs./ac.
- Potassium: 30 lbs./ac.
- Lime: 600 lbs./ac. ENM*

*ENM - Effective Neutralizing Material as per State evaluation of quarried rock.



4/6/04	REVISE PLANS PER CITY COMMENTS
5/20/04	REVISE PLANS PER CITY COMMENTS
6/11/04	REVISE PLANS PER MODOT

CONSTRUCTION PLANS

KINKER BUILDING

GRADING PLAN

ST. CHARLES ENGINEERING & SURVEYING, INC.
801 S. FIFTH STREET, SUITE 202
ST. CHARLES, MO 63301
TEL:(636) 947-0607 FAX:(636) 947-2448

ORDER NO. 03-1616
DATE 2/12/04
3

Call BEFORE you DIG
1-800-344-7483
MISSOURI ONE-CALL SYSTEM, INC.