

PRINTS ISSUED  
05/11/18 - Permit Set

REVISIONS:  
 3 12/7/2018 Addendum #3  
 5 03/26/2019 Addendum #5 (Civil Issue)

**HORNER SHIFRIN**

101 LAURA K DR. STE. 101 OFALLON, MO 63366-3091  
 636-329-9296 • FAX 636-329-2910 • WWW.HORNERSHIFRIN.COM  
 DISCIPLINE: PROFESSIONAL ENGINEERING  
 CERTIFICATE OF AUTHORITY: 000769  
 EXPIRATION DATE: DECEMBER 31, 2018

STATE OF MISSOURI  
 APRIL GEISMAN  
 PROFESSIONAL ENGINEER  
 LICENSE NO. E-2001004592  
 EXPIRATION DATE: 01/03/2019

Name: April Geisman  
 Discipline: Civil Engineer  
 License No. E2001004592  
 Expiration Date: 12/31/2019

**RENEW O'FALLON**

**T.R. HUGHES BLVD**  
**O'FALLON, MO 63366**

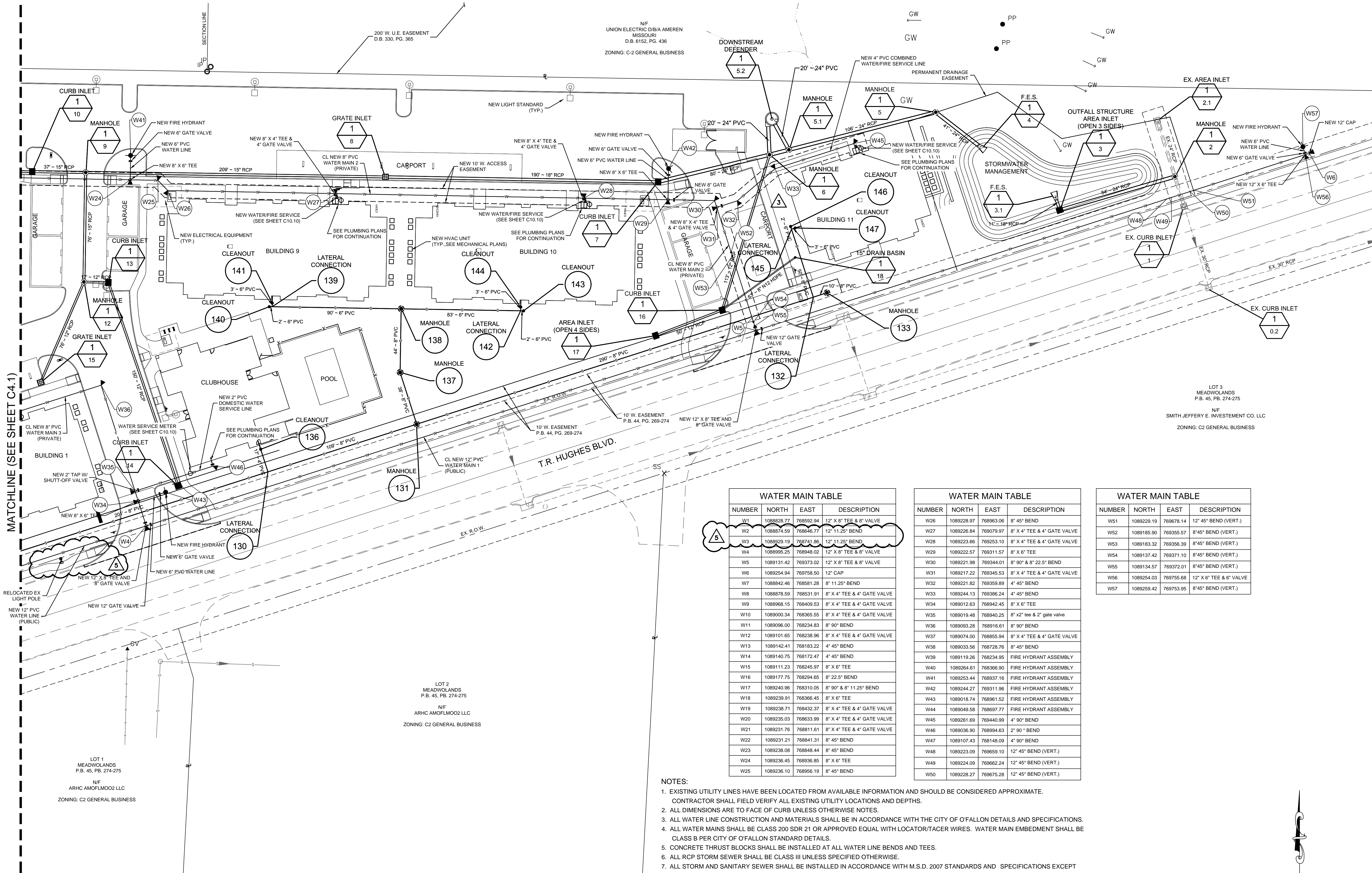
SHEET TITLE: UTILITY PLAN

PROJECT NUMBER: 17050

SHEET NUMBER:

**C4.2**

DRAWN BY: AMH CHECKED BY: AMG



**WATER MAIN TABLE**

NUMBER	NORTH	EAST	DESCRIPTION
W1	108828.77	76852.94	12" X 8" TEE & 8" VALVE
W2	108874.59	76856.77	12" 11.25" BEND
W3	108829.19	76874.86	12" 11.25" BEND
W4	108895.25	76894.02	12" X 8" TEE & 8" VALVE
W5	108913.42	76937.02	12" X 8" TEE & 8" VALVE
W6	108925.94	76975.50	12" CAP
W7	108842.46	76851.28	8" 11.25" BEND
W8	108878.59	76853.91	8" X 4" TEE & 4" GATE VALVE
W9	108898.15	76849.53	8" X 4" TEE & 4" GATE VALVE
W10	108900.34	76836.55	8" X 4" TEE & 4" GATE VALVE
W11	108909.00	76823.83	8" 90° BEND
W12	108910.65	76828.96	8" X 4" TEE & 4" GATE VALVE
W13	108914.21	76818.22	4" 45° BEND
W14	108914.75	76817.47	4" 45° BEND
W15	108911.23	76824.97	8" X 6" TEE
W16	108917.75	76829.65	8" 22.5° BEND
W17	108924.96	76831.05	8" 90° & 8" 11.25° BEND
W18	108923.91	76836.45	8" X 6" TEE
W19	108923.71	76843.37	8" X 4" TEE & 4" GATE VALVE
W20	108923.03	76863.99	8" X 4" TEE & 4" GATE VALVE
W21	108923.76	76881.61	8" X 4" TEE & 4" GATE VALVE
W22	108923.21	76884.31	8" 45° BEND
W23	108923.08	76884.44	8" 45° BEND
W24	108923.45	76893.85	8" X 6" TEE
W25	108923.10	76895.19	8" 45° BEND

**WATER MAIN TABLE**

NUMBER	NORTH	EAST	DESCRIPTION
W26	1089228.97	768963.06	8" 45° BEND
W27	1089228.84	769079.97	8" X 4" TEE & 4" GATE VALVE
W28	1089223.66	769253.10	8" X 4" TEE & 4" GATE VALVE
W29	1089222.57	769311.57	8" X 6" TEE
W30	1089221.98	769344.01	8" 90° & 8" 22.5° BEND
W31	1089217.22	769345.53	8" X 4" TEE & 4" GATE VALVE
W32	1089221.82	769359.89	4" 45° BEND
W33	1089244.13	769386.24	4" 45° BEND
W34	1089012.63	768942.45	8" X 6" TEE
W35	1089019.48	768940.25	8" x2" tee & 2" gate valve
W36	1089093.28	768916.61	8" 90° BEND
W37	1089074.00	768855.94	8" X 4" TEE & 4" GATE VALVE
W38	1089033.56	768728.76	8" 45° BEND
W39	1089119.26	768234.95	FIRE HYDRANT ASSEMBLY
W40	1089264.61	768366.90	FIRE HYDRANT ASSEMBLY
W41	1089253.44	768937.16	FIRE HYDRANT ASSEMBLY
W42	1089244.27	769311.96	FIRE HYDRANT ASSEMBLY
W43	1089018.74	768961.52	FIRE HYDRANT ASSEMBLY
W44	1089049.58	768697.77	FIRE HYDRANT ASSEMBLY
W45	1089261.69	769440.99	4" 90° BEND
W46	1089036.90	768994.63	2" 90° BEND
W47	1089107.43	768148.09	4" 90° BEND
W48	1089223.09	769659.10	12" 45° BEND (VERT.)
W49	1089224.09	769662.24	12" 45° BEND (VERT.)
W50	1089228.27	769675.28	12" 45° BEND (VERT.)

**WATER MAIN TABLE**

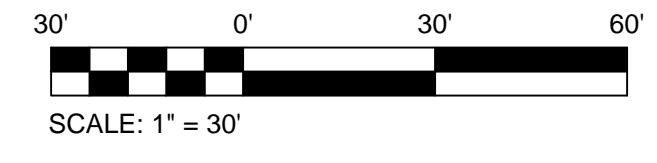
NUMBER	NORTH	EAST	DESCRIPTION
W51	1089229.19	768678.14	12" 45° BEND (VERT.)
W52	1089185.90	769355.57	8" 45° BEND (VERT.)
W53	1089183.32	769356.39	8" 45° BEND (VERT.)
W54	1089137.42	769371.10	8" 45° BEND (VERT.)
W55	1089134.57	769372.01	8" 45° BEND (VERT.)
W56	1089254.03	768755.68	12" X 6" TEE & 6" VALVE
W57	1089259.42	768753.95	8" 45° BEND (VERT.)

- NOTES:**
- EXISTING UTILITY LINES HAVE BEEN LOCATED FROM AVAILABLE INFORMATION AND SHOULD BE CONSIDERED APPROXIMATE. CONTRACTOR SHALL FIELD VERIFY ALL EXISTING UTILITY LOCATIONS AND DEPTHS.
  - ALL DIMENSIONS ARE TO FACE OF CURB UNLESS OTHERWISE NOTED.
  - ALL WATER LINE CONSTRUCTION AND MATERIALS SHALL BE IN ACCORDANCE WITH THE CITY OF O'FALLON DETAILS AND SPECIFICATIONS.
  - ALL WATER MAINS SHALL BE CLASS 200 SDR 21 OR APPROVED EQUAL WITH LOCATOR/TACER WIRES. WATER MAIN EMBEDMENT SHALL BE CLASS B PER CITY OF O'FALLON STANDARD DETAILS.
  - CONCRETE THRUST BLOCKS SHALL BE INSTALLED AT ALL WATER LINE BENDS AND TEES.
  - ALL RCP STORM SEWER SHALL BE CLASS III UNLESS SPECIFIED OTHERWISE.
  - ALL STORM AND SANITARY SEWER SHALL BE INSTALLED IN ACCORDANCE WITH M.S.D. 2007 STANDARDS AND SPECIFICATIONS EXCEPT AS MODIFIED BY THE CITY OF O'FALLON ORDINANCES.
  - ALL SANITARY SEWER SHALL BE SDR35 OR APPROVED EQUAL.
  - ALL SANITARY SEWER LATERALS SHALL BE A MINIMUM OF 6" SCHEDULE 40 PVC PIPE.
  - SEE ELECTRICAL PLANS FOR NEW ELECTRIC LINES, LIGHT STANDARDS, ELECTRICAL STRUCTURES, ETC.
  - SEE PLUMBING PLANS FOR WATER LINE AND SANITARY SEWER LATERAL CONNECTIONS TO NEW BUILDINGS.
  - TO PREVENT SEDIMENT FROM CLOGGING THE BMP, CONSTRUCTION SITE RUNOFF SHALL NOT FLOW INTO BMP AREAS. ALL STORMWATER FLOW TO BMP AREAS SHALL BE DIVERTED, PLUGGED, OR DISCONNECTED UNTIL THE CONSTRUCTION SITE IS STABLE AND THE INSPECTOR PROVIDES APPROVAL TO PLACE THE BMP ON-LINE.
  - 15" DRAIN BASIN TO BE NYLOPLAST 15" INLINE DRAIN WITH 15" STANDARD GRATE.

**SPECIAL NOTE TO CONTRACTOR(S):**

EXISTING UNDERGROUND AND ABOVE-GRADE FACILITIES, STRUCTURES, AND UTILITIES HAVE BEEN PLOTTED ON THESE CONTRACT DOCUMENTS BASED ON THE INFORMATION AND SURVEYS AVAILABLE AT THE TIME OF DRAWING PREPARATION. THE LOCATIONS OF THESE FEATURES MUST, THEREFORE, BE CONSIDERED APPROXIMATE, ONLY. IN ADDITION, THERE MAY BE OTHER FACILITIES, STRUCTURES, AND UTILITIES WHICH DID NOT EXIST (OR THE EXISTENCE OF WHICH WAS NOT KNOWN) AT THE TIME OF DRAWING PREPARATION. IT IS THE SOLE RESPONSIBILITY OF THE CONTRACTOR(S) TO HAVE ALL EXISTING FACILITIES, STRUCTURES, AND UTILITIES LOCATED IN THE FIELD PRIOR TO ANY EXCAVATION OR CONSTRUCTION ACTIVITY, AND TO PROTECT ALL SUCH EXISTING FEATURES (EXCEPT THOSE SPECIFICALLY NOTED FOR REMOVAL OR DEMOLITION) DURING CONSTRUCTION.

Call Before you DIG  
 TOLL FREE  
 1-800-344-7483  
 MISSOURI ONE-CALL SYSTEM INC.  
 MODOT (314) 340-4100



OPERATOR: JMWINTERMEIER  
 DWG: C:\pwworking\shifrin\_jmwintermeier\projects\17050\Utility Plan.dwg  
 CTR: Trans-st.cad  
 PLOT DATE: 3/26/2019 9:16:22 AM  
 PAGE SETUP NAME: 24x36 PDF  
 SAVE DATE: 3/26/2019 12:27:32 PM