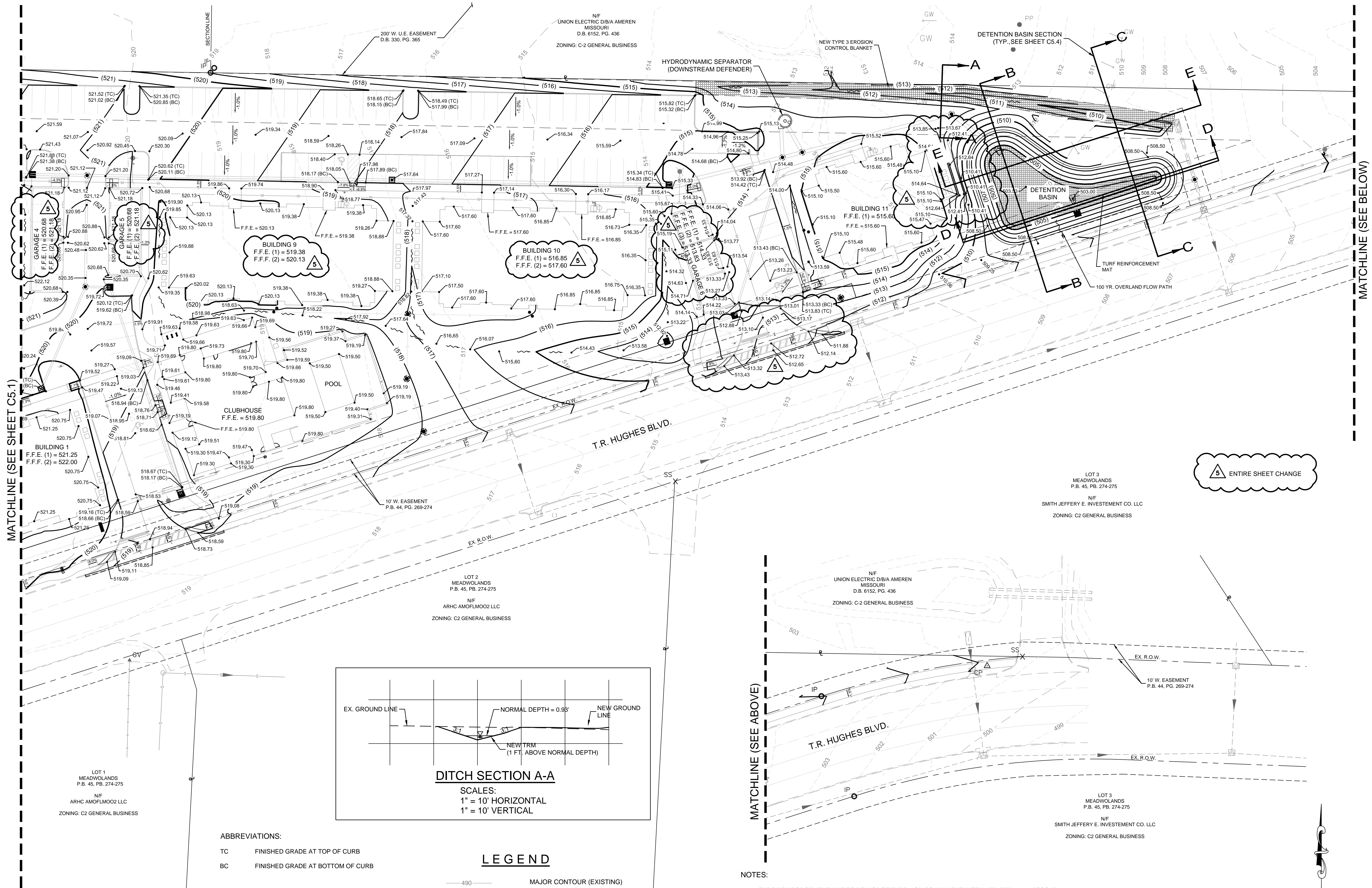


HORNER SHIFRIN

101 LAURA V. DR., STE. 101 OF FALLON, MO 63366-2091
636-329-2296 • FAX 636-329-2910 • WWW.HORNERSHIFRIN.COM
DISCIPLINE: PROFESSIONAL ENGINEERING
CERTIFICATE OF AUTHORITY: 000159
EXPIRATION DATE: DECEMBER 31, 2018

STATE OF MISSOURI
APRIL GEISMAN
PROFESSIONAL ENGINEER
NUMBER E-2001004592
01/03/2019

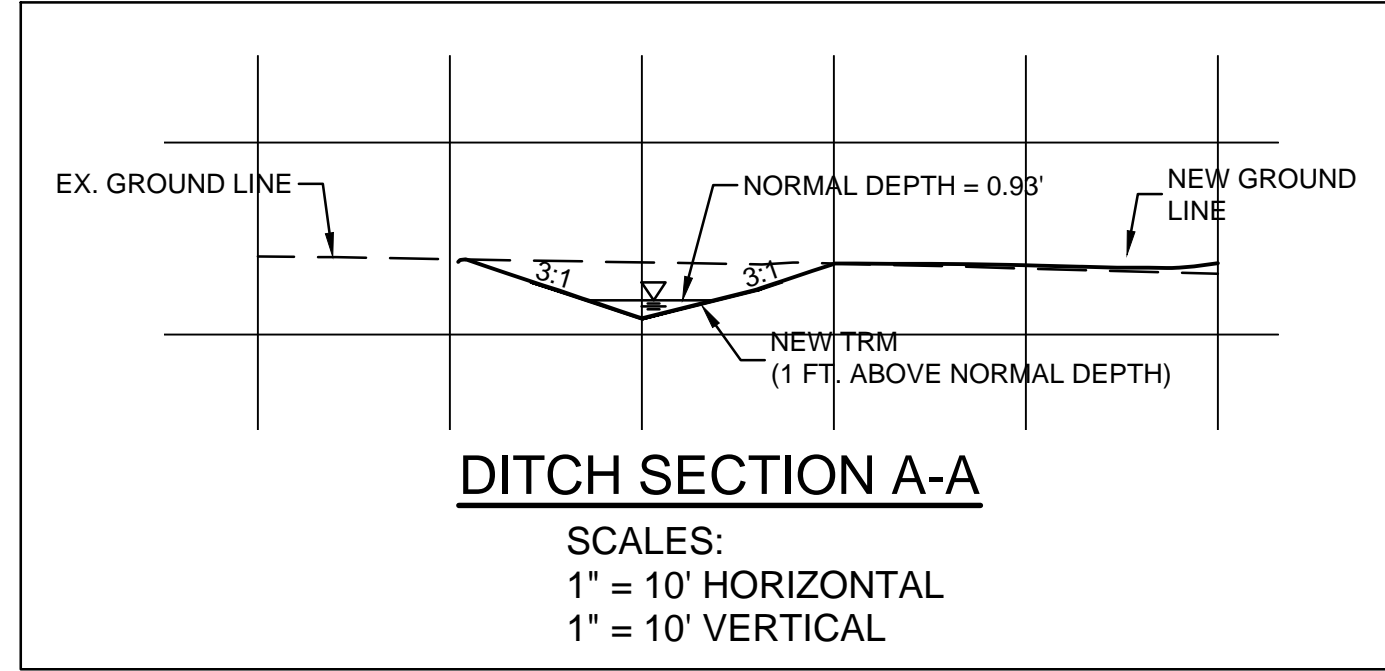
Name: April Geismann
Discipline: Civil Engineer
License No. E2001004592
Expiration Date: 12/31/2019



MATCHLINE (SEE SHEET C5.1)

MATCHLINE (SEE BELOW)

5 ENTIRE SHEET CHANGE



ABBREVIATIONS:
TC FINISHED GRADE AT TOP OF CURB
BC FINISHED GRADE AT BOTTOM OF CURB

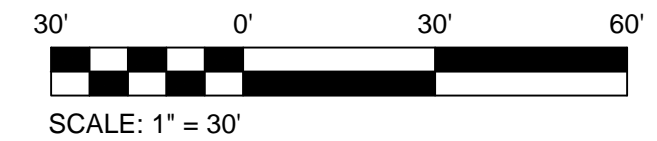
LEGEND

- 490 — MAJOR CONTOUR (EXISTING)
- 491 — MINOR CONTOUR (EXISTING)
- (480) — MAJOR CONTOUR (NEW)
- (481) — MINOR CONTOUR (NEW)
- [Hatched Box] TURF REINFORCEMENT MAT

NOTES:

- TURF REINFORCEMENT MAT TO BE MODOT TYPE 1 OR EQUIVALENT INSTALLED PER 2016 MISSOURI STANDARD SPECIFICATIONS FOR CONSTRUCTION.
- SEE ROUGH GRADING PLAN AND SWPPP FOR EROSION AND SEDIMENT CONTROL MEASURES.
- SEE SHEET C5.3 FOR ENTRANCE WARPING PLANS AND PROFILES.
- SEE SHEET C5.4 FOR DETENTION BASIN SECTIONS.

Call Before you DIG
TOLL FREE
1-800-344-7483
MISSOURI ONE-CALL SYSTEM INC.
MODOT (314) 340-4100



RENEW O'FALLON
T.R. HUGHES BLVD
O'FALLON, MO 63366

SHEET TITLE GRADING PLAN
PROJECT NUMBER: 17050
SHEET NUMBER:

C5.2

DRAWN BY: AMH CHECKED BY: AMG

OPERATOR: JMWINTERKNEER
SPECIAL NOTE TO CONTRACTOR(S): EXISTING UNDERGROUND AND ABOVE-GRADE FACILITIES, STRUCTURES, AND UTILITIES HAVE BEEN PLOTTED ON THESE CONTRACT DOCUMENTS BASED ON THE INFORMATION AND SURVEYS AVAILABLE AT THE TIME OF DRAWING PREPARATION. IT IS THE SOLE RESPONSIBILITY OF THE CONTRACTOR(S) TO HAVE ALL EXISTING FACILITIES, STRUCTURES, AND UTILITIES LOCATED IN THE FIELD PRIOR TO ANY EXCAVATION OR CONSTRUCTION ACTIVITY, AND TO PROTECT ALL SUCH EXISTING FEATURES (EXCEPT THOSE SPECIFICALLY NOTED FOR REMOVAL OR DEMOLITION) DURING CONSTRUCTION.