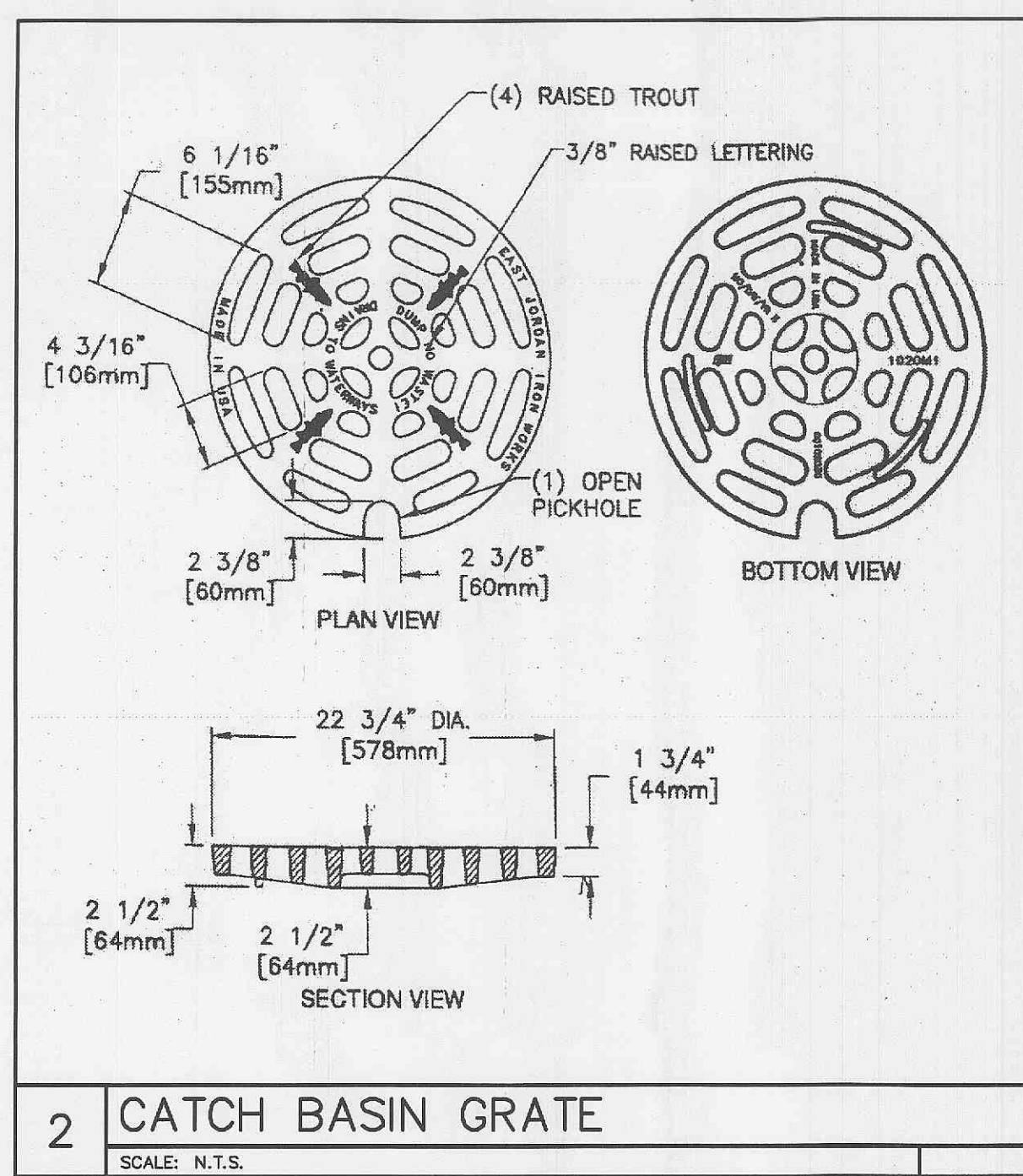
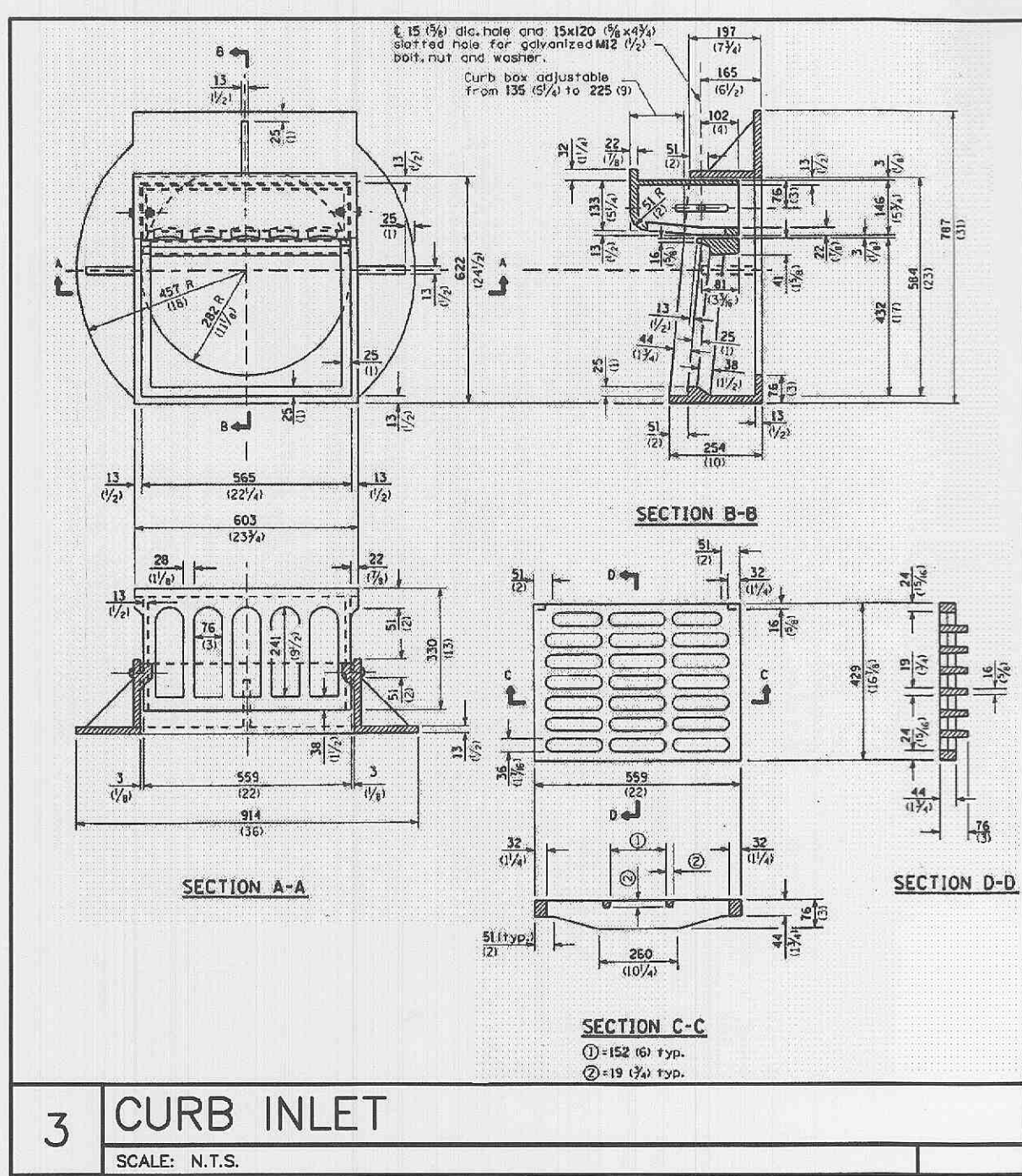


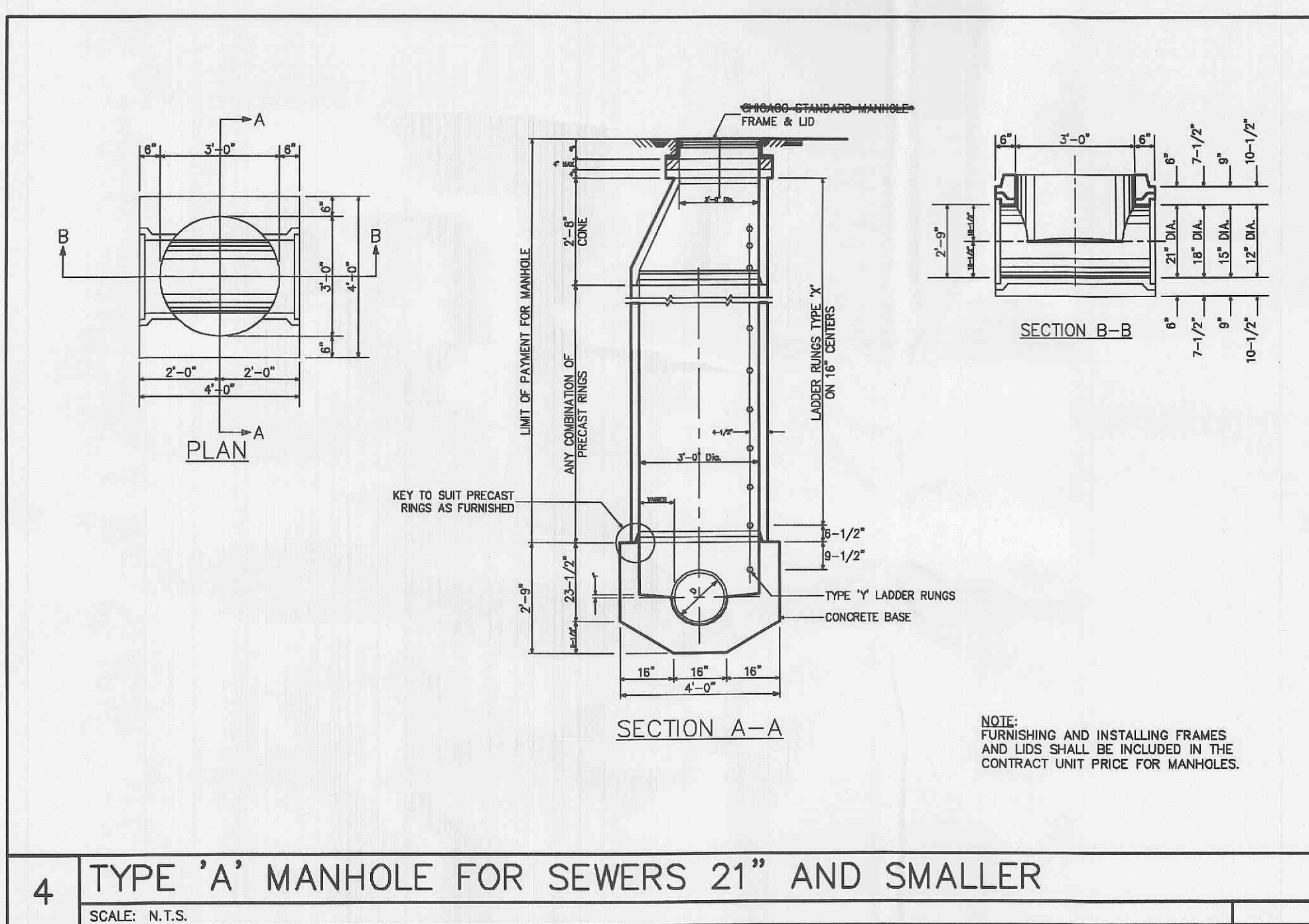
1 FRAME AND LIDS  
SCALE: N.T.S.



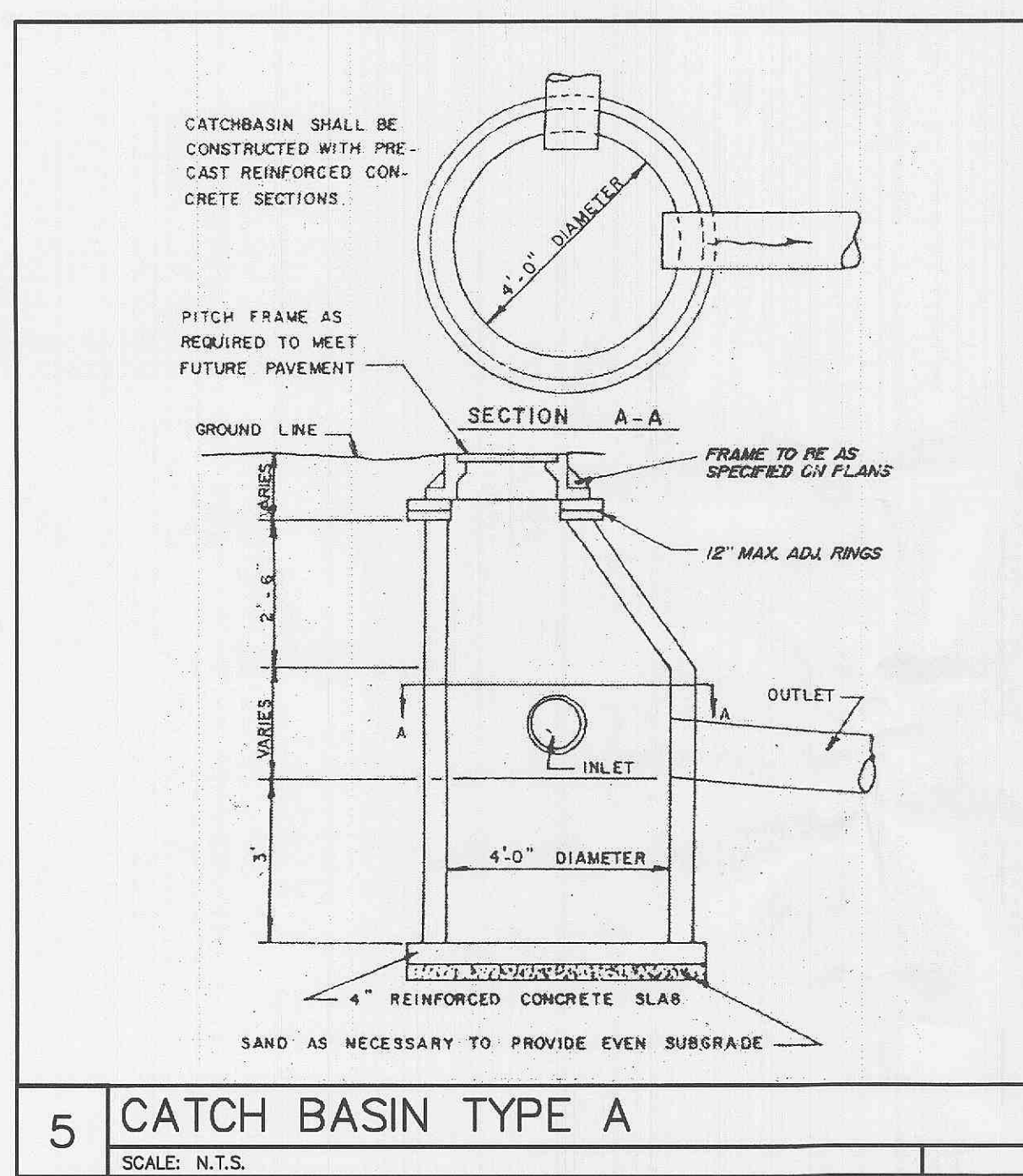
2 CATCH BASIN GRATE  
SCALE: N.T.S.



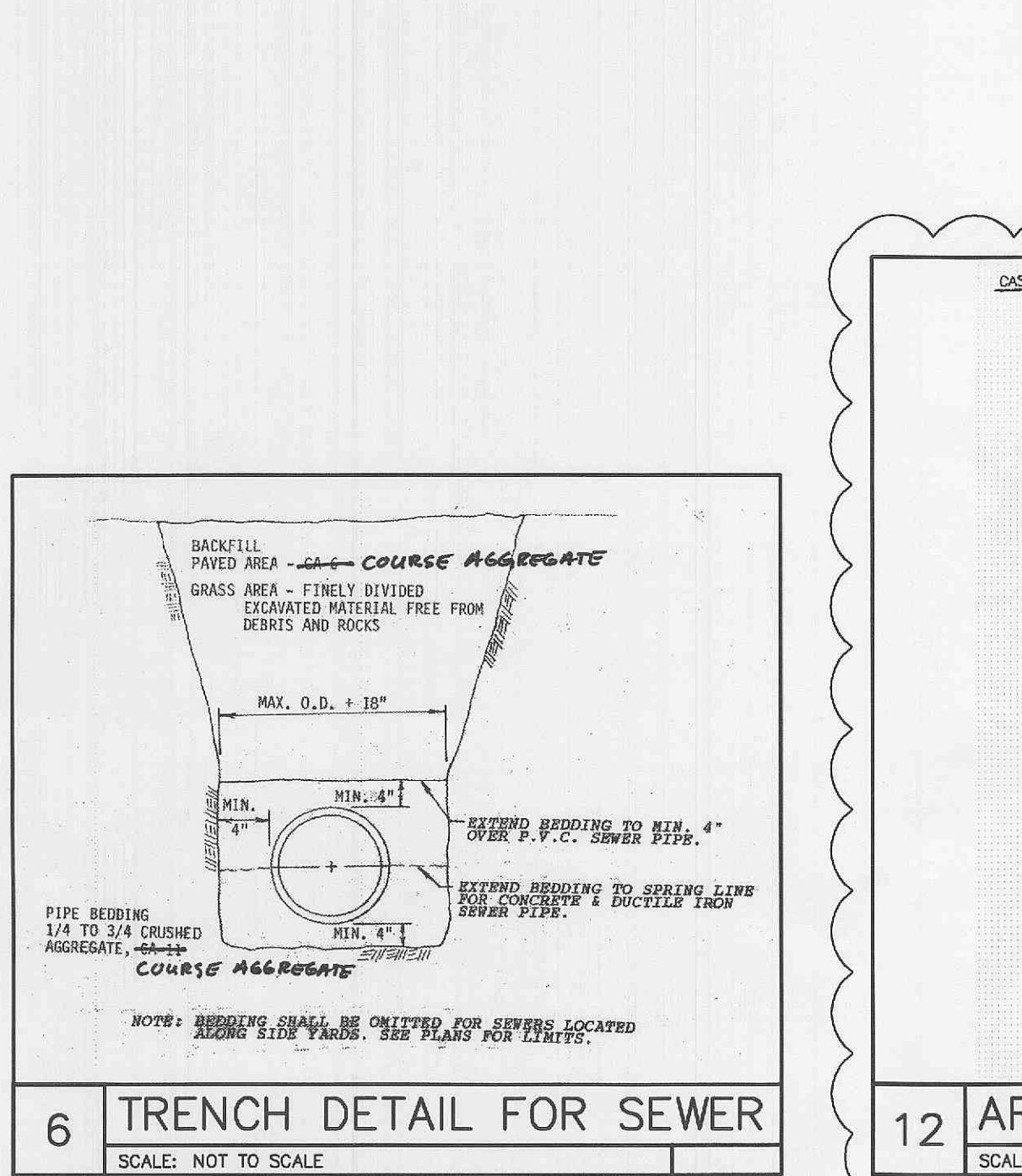
3 CURB INLET  
SCALE: N.T.S.



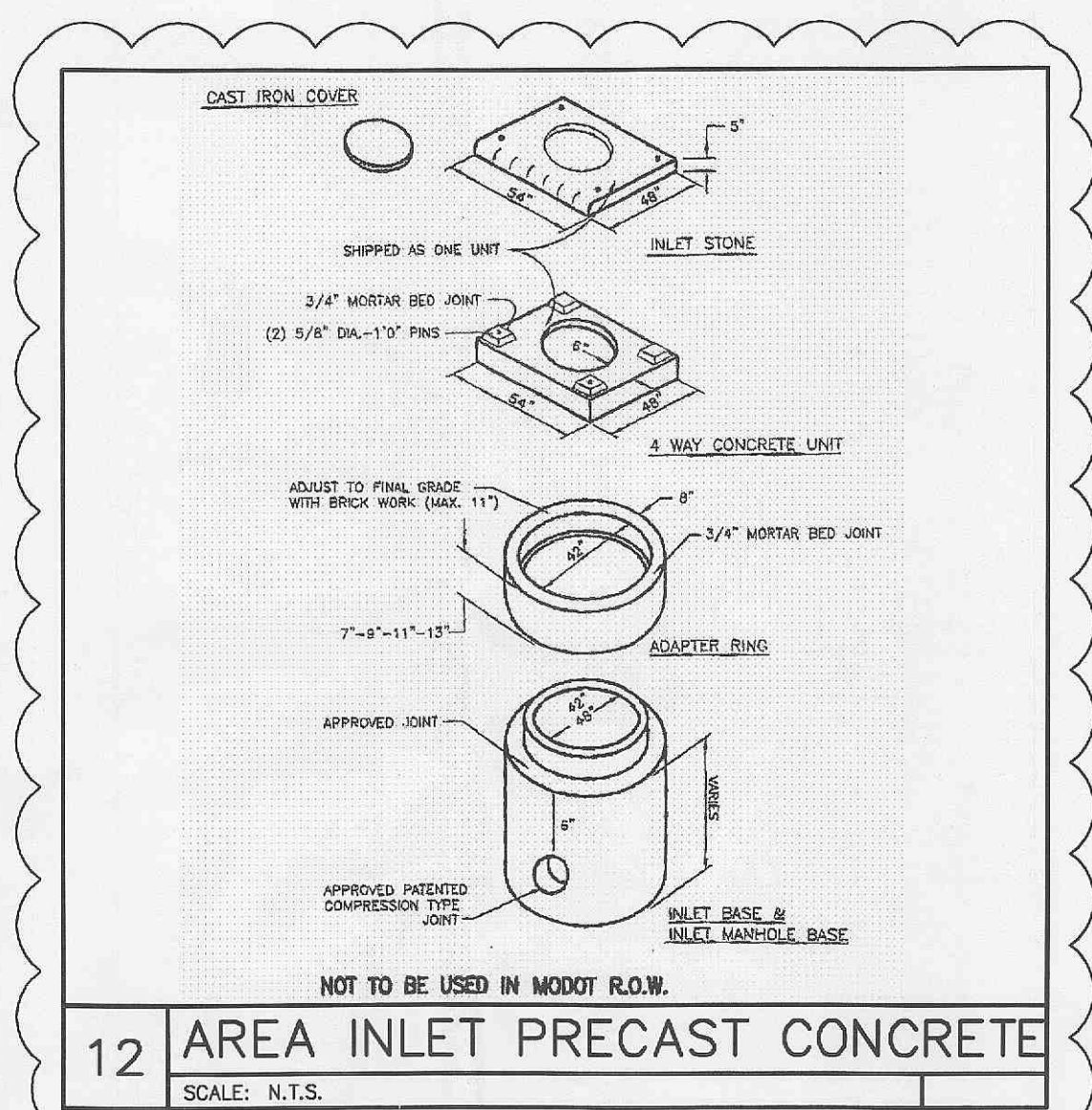
4 TYPE 'A' MANHOLE FOR SEWERS 21" AND SMALLER  
SCALE: N.T.S.



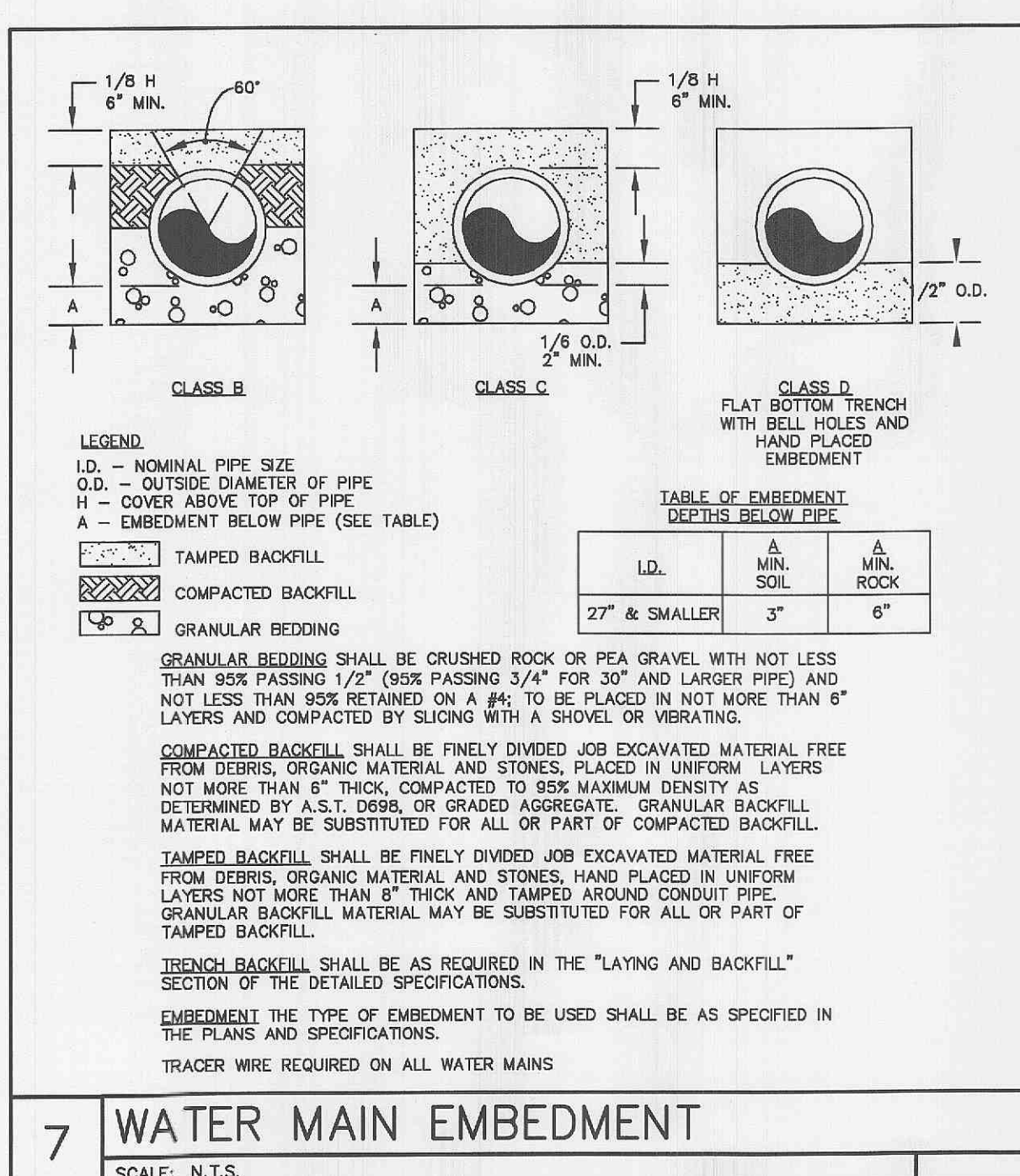
5 CATCH BASIN TYPE A  
SCALE: N.T.S.



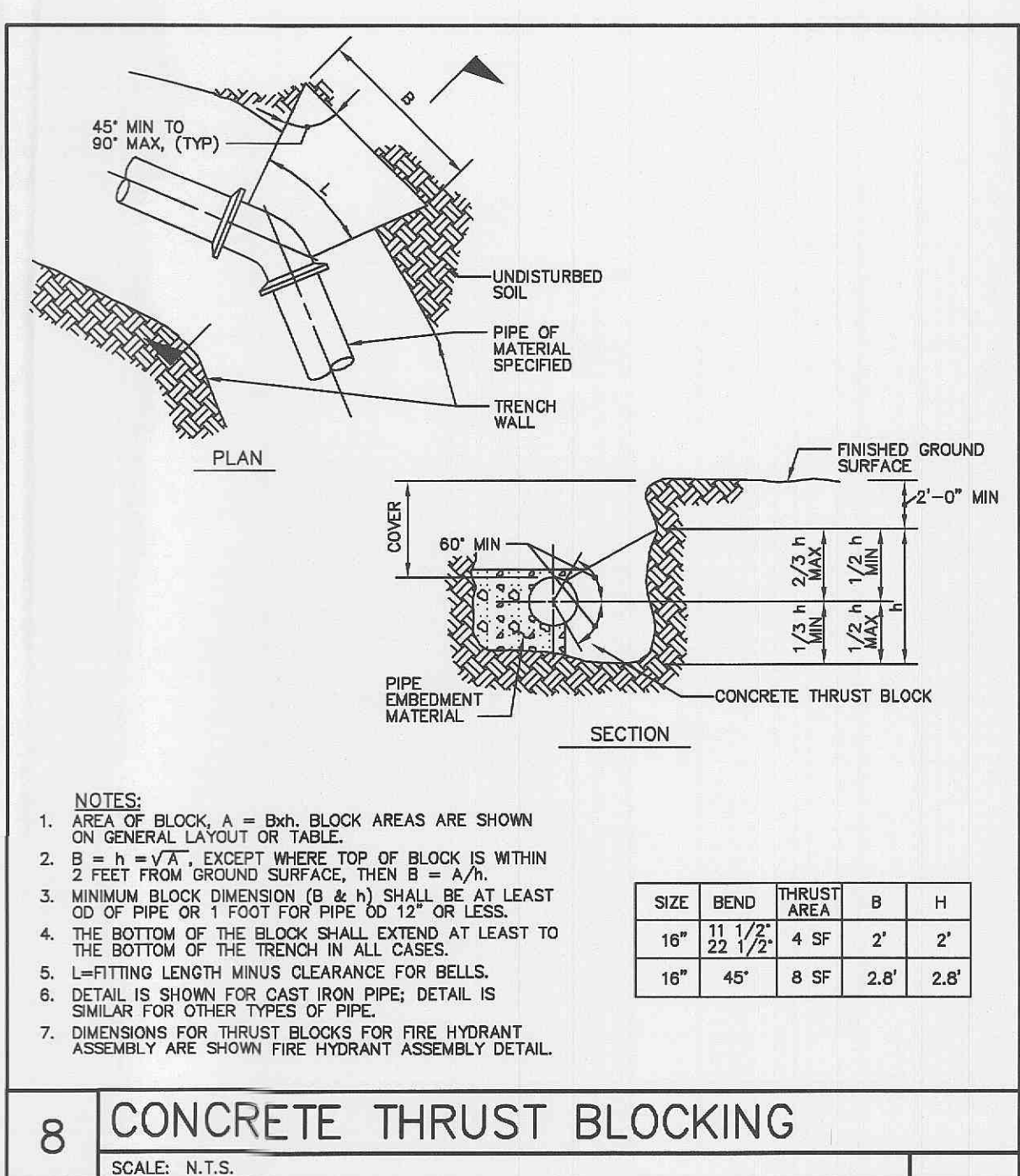
6 TRENCH DETAIL FOR SEWER  
SCALE: NOT TO SCALE



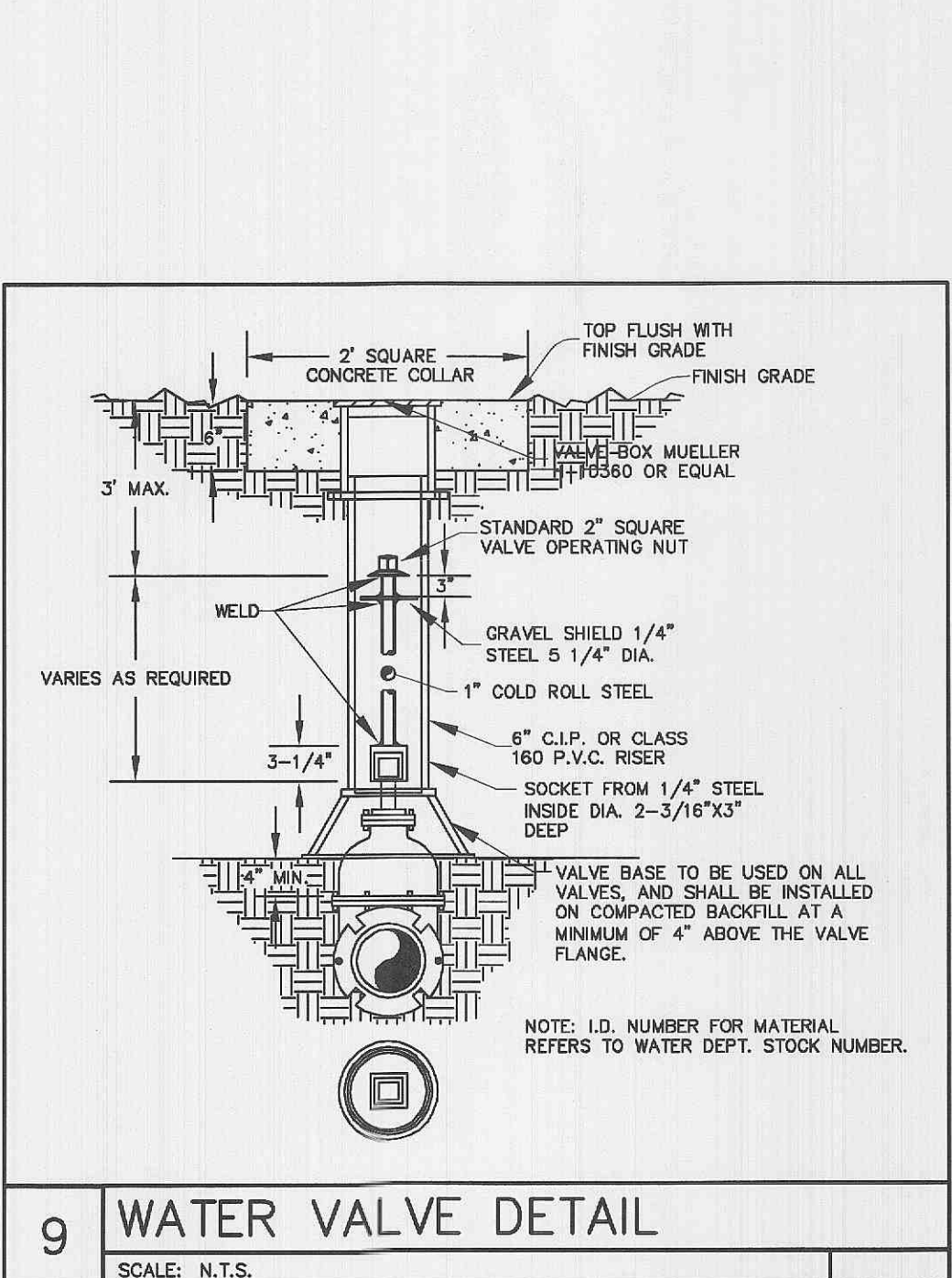
12 AREA INLET PRECAST CONCRETE  
SCALE: N.T.S.



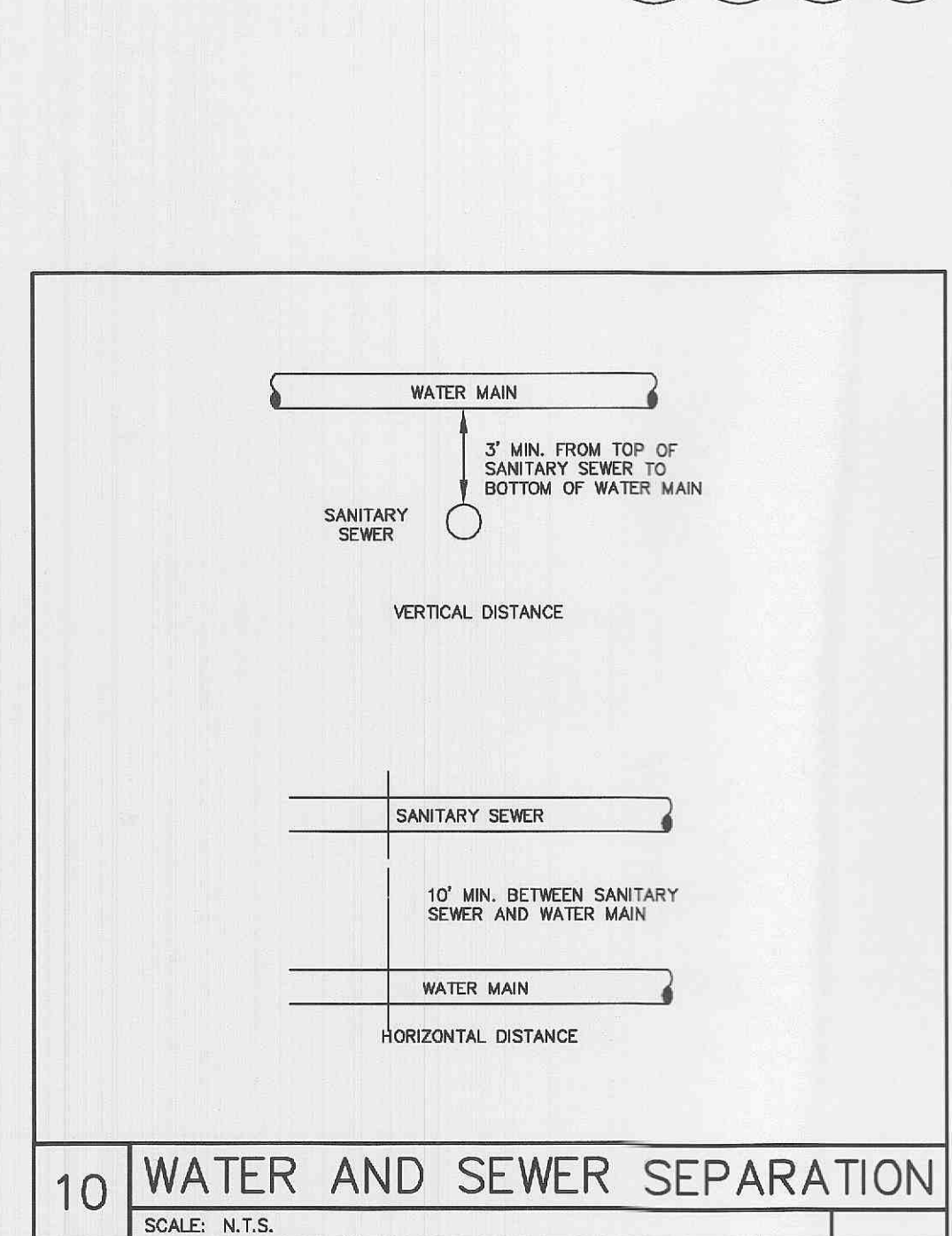
7 WATER MAIN EMBEDMENT  
SCALE: N.T.S.



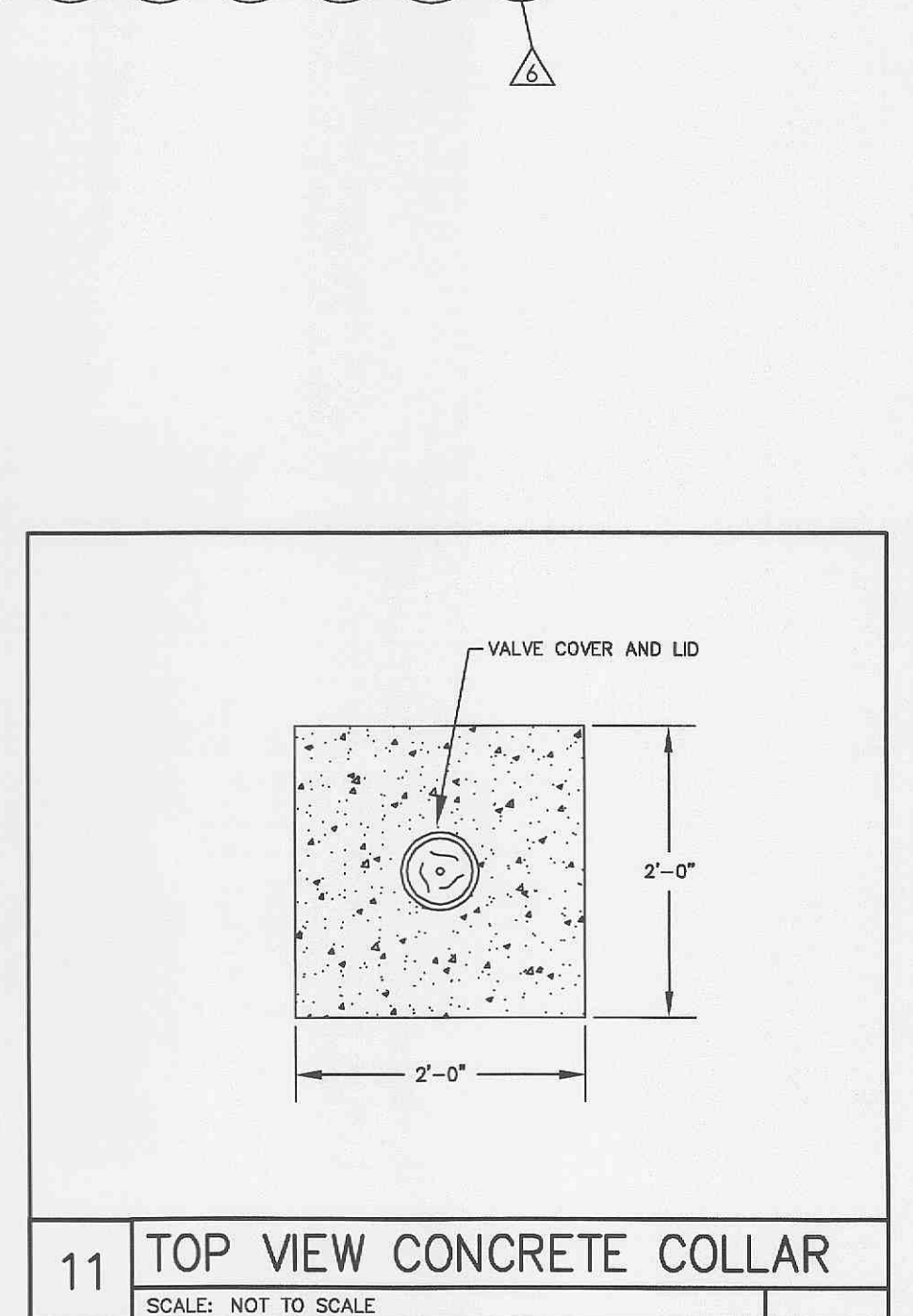
8 CONCRETE THRUST BLOCKING  
SCALE: N.T.S.



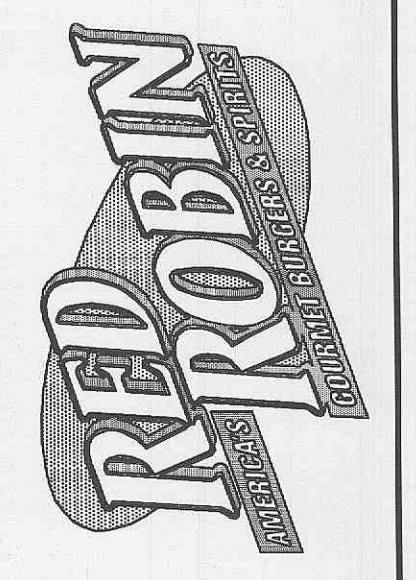
9 WATER VALVE DETAIL  
SCALE: N.T.S.



10 WATER AND SEWER SEPARATION  
SCALE: N.T.S.



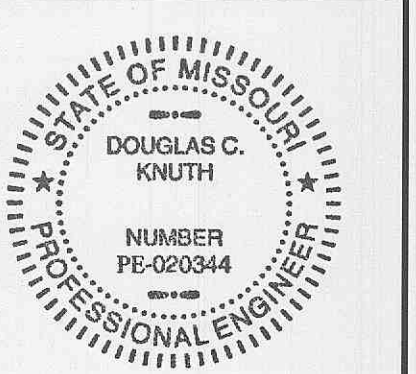
11 TOP VIEW CONCRETE COLLAR  
SCALE: NOT TO SCALE



RED ROBIN GOURMET BURGERS  
1440 MEXICO LOOP ROAD EAST  
OF FALLON, MO  
UTILITY DETAILS  
ENGINEERING RE-ISSUE: 10/28/05

CHIPMAN ADAMS LTD.  
A. C. H. & C. S.  
1550 N. Northwest Highway, Suite 400  
Park Ridge, Illinois 60068-1463  
T 847-298-4900 F 847-298-6966  
One North Franklin, Suite 500  
Chicago, IL 60610-3000  
F 312-251-3015  
www.ckcorp.com  
Edwards  
and Kelcey

Revisions  
 ▲ PLANNING & ZONING ISSUE 06/17/05  
 ▲ PLANNING & ZONING RE-ISSUE 07/06/05  
 ▲ PLAN REVIEW ISSUE 08/24/05  
 ▲ ENGR. RE-ISSUE @ 24X36 09/16/05  
 ▲ ENGINEERING RE-ISSUE 10/12/05  
 ▲ ENGINEERING RE-ISSUE 10/28/05



I HEREBY CERTIFY THAT THESE PLANS HAVE BEEN PREPARED UNDER MY SUPERVISION AND THAT TO THE BEST OF MY KNOWLEDGE THESE COMPLY WITH ALL RULES, REGULATIONS AND ORDINANCES OF THE STATE OF MISSOURI RELATING TO LANDSCAPE, SITE AND CIVIL ENGINEERING.  
 Drawn By: NMG  
 Checked By: JPG  
 Scale: AS SHOWN  
 Date: 6/17/05  
 Job No.: 05-4393  
 Sheet No.: C3.4