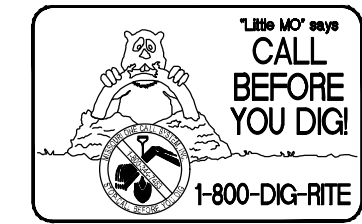


UTILITIES NOTE

UNDERGROUND FACILITIES, UTILITIES AND STRUCTURES HAVE BEEN PLOTTED FROM AVAILABLE INFORMATION AND THEREFORE, THEIR LOCATION MUST BE CONSIDERED APPROXIMATE ONLY. THERE MAY BE OTHERS, THE EXISTENCE OF WHICH IS PRESENTLY NOT KNOWN. IT IS THE RESPONSIBILITY OF THE CONTRACTOR TO HAVE ALL UTILITIES LOCATED IN THE FIELD PRIOR TO EXCAVATION OR CONSTRUCTION.



LEGEND

--- LIMITS OF DEMOLITION, ALL PAVEMENT WITHIN THESE LIMITS SHALL BE REMOVED. AT ALL LOCATIONS WHERE PROPOSED PAVEMENT SHALL ABUT EXISTING PAVEMENT, THE EXISTING PAVEMENT SHALL BE SAW-CUT TO THE FULL DEPTH OF THE EXISTING MATERIAL.

DEMOLITION NOTES

1. CONCRETE WALKS AND CURBS TO BE REMOVED SHALL BE SAWCUT AT THE NEAREST CONTRACTION OR EXPANSION JOINT.
2. CONTRACTOR SHALL REMOVE AND DISPOSE OF ALL ASPHALT, CONCRETE, ROCK, BUILDING MATERIALS, AND ALL OTHER DEBRIS AT AN APPROVED LANDFILL IN ACCORDANCE WITH ALL RULES AND REGULATIONS, INCLUDING MISSOURI DEPARTMENT OF NATURAL RESOURCES (MNR), CITY OF FALLON AND ST. CHARLES COUNTY.
3. EXISTING SERVICE LINES (GAS, WATER, SANITARY, ETC.) SHALL BE REMOVED TO THE MAIN LINES, THEN CAPPED AT THE MAIN LINE CONNECTION OR COMPLETELY GROUTED FULL IN ACCORDANCE WITH THE RESPECTIVE UTILITY COMPANY STANDARDS AND SPECIFICATIONS. ALL UTILITY METERS FOR EXISTING BUILDINGS SHALL BE REMOVED.
4. PRIOR TO DEMOLITION OCCURRING, ALL EROSION CONTROL DEVICES ARE TO BE INSTALLED.

BENCHMARK AND BASIS OF BEARING

SITE BENCHMARK:
ELEVATION = 506.59 FT

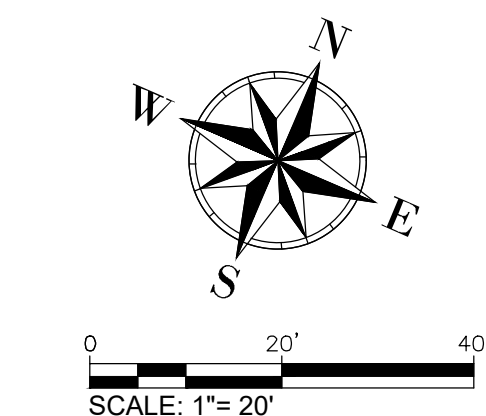
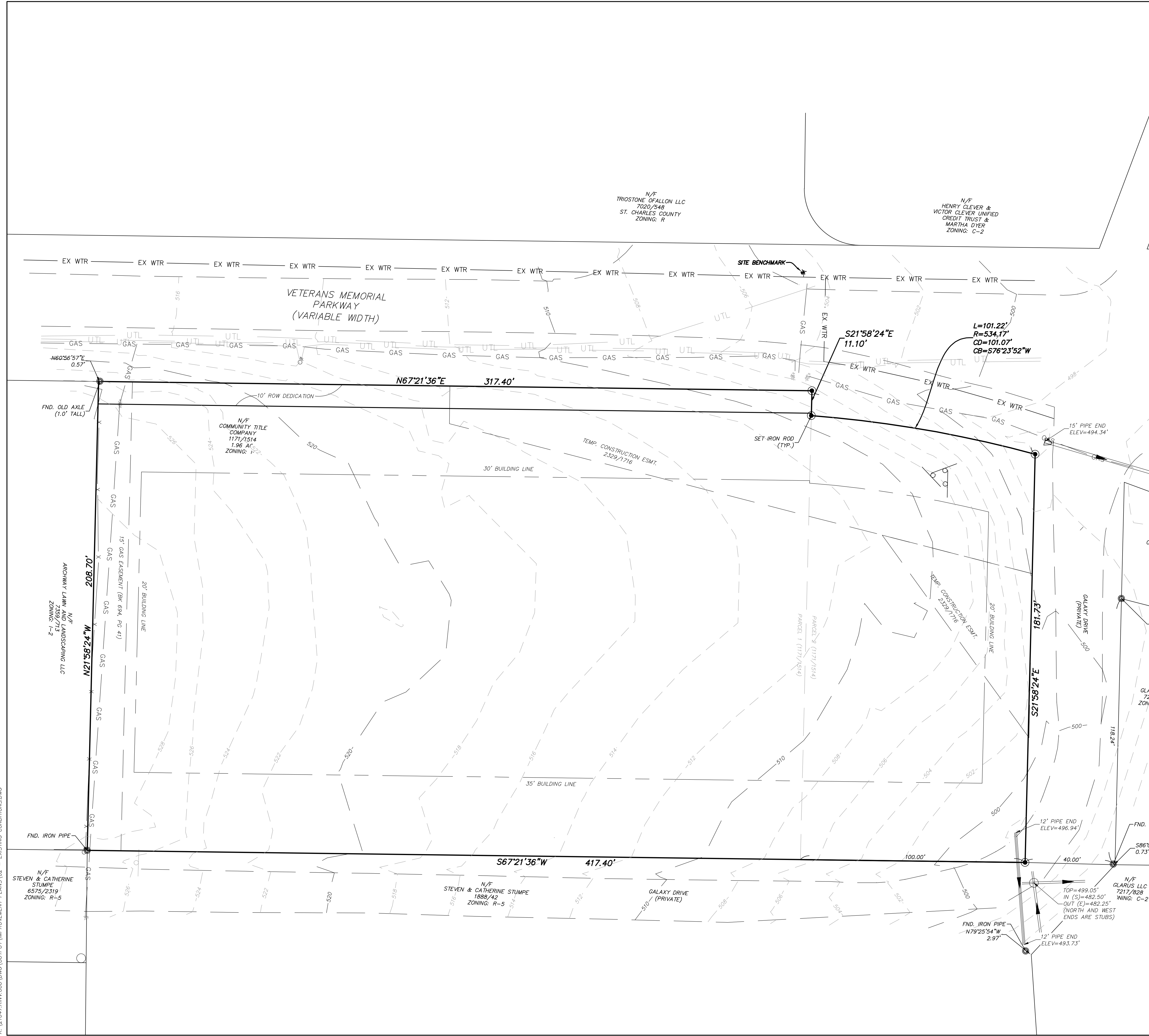
"0" IN OPEN OF AN EXISTING FIRE HYDRANT ON THE NORTH SIDE OF VETERANS MEMORIAL DRIVE EAST OF THE ENTRANCE TO THE TRIOSTONE PROPERTY.

BASIS OF BEARINGS IS GRID NORTH DETERMINED BY GPS OBSERVATIONS. THE PROJECT COORDINATE VALUES ARE MODIFIED TO GROUND FROM STATE PLANE COORDINATE VALUES WITH THE APPLIED AVERAGE COMBINED SCALE FACTOR (CSF) OF 0.9999150

OBSERVED MISSOURI STATION SC-06 ON 08-31-2021.

NORTH	330208.469 M
EAST	237061.454 M
ELEV	161.28 M

MEASURED	
NORTH	330208.475 M
EAST	237061.531 M
ELEV	161.28 M



RELIABLE INVESTMENTS
Improvement Plans
Existing Conditions

PROJECT NO. 2022/04/14 IMPROVEMENT PLAN
CIP PROJECT NO. 2021-71

Pickett Ray & Silver
Part of Civil & Environmental Consultants, Inc. (CEC)

St. Charles
3000 Little Hills Expwy
Suite 102
St. Charles, MO 63301

Phone (314) 666-4566
Fax (636) 997-1104
www.CECINC.com

ENGINEER'S AUTHENTICATION
The responsibility for professional engineering liability on this project is hereby limited to the set of plans authorized by the seal, signature, and date hereunder attached. Responsibility is disclaimed for all other engineering plans involved in this project and specifically excludes revisions after this date unless reauthorized.

PICKETT, RAY & SILVER, INC.

KARL A. SCHOENKE
REGISTERED PROFESSIONAL ENGINEER
NUMBER 17308
EXPIRES 04/15/2022

KARL ANTHONY SCHOENKE, P.E.
PE-2003015039

City of O'Fallon Site Plan

Owner Information:
Reliable Investments
1262 Perouque Ridge Drive
Wentzville, MO 63385

P+Z No.: 21-009215
Approval Date: 11-04-2021
City No.:
Page No.: 03 of 13

K:\210427\RVV\000\DWG\OUTPUT\IMPROVEMENT PLANS\02 - EXISTING CONDITIONS.DWG