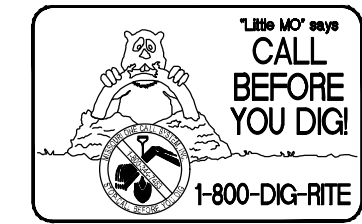


UTILITIES NOTE

UNDERGROUND FACILITIES, UTILITIES AND STRUCTURES HAVE BEEN PLOTTED FROM AVAILABLE INFORMATION AND THEREFORE, THEIR LOCATION MUST BE CONSIDERED APPROXIMATE ONLY. THERE MAY BE OTHERS, THE EXISTENCE OF WHICH IS PRESENTLY NOT KNOWN. IT IS THE RESPONSIBILITY OF THE CONTRACTOR TO HAVE ALL UTILITIES LOCATED IN THE FIELD PRIOR TO EXCAVATION OR CONSTRUCTION.

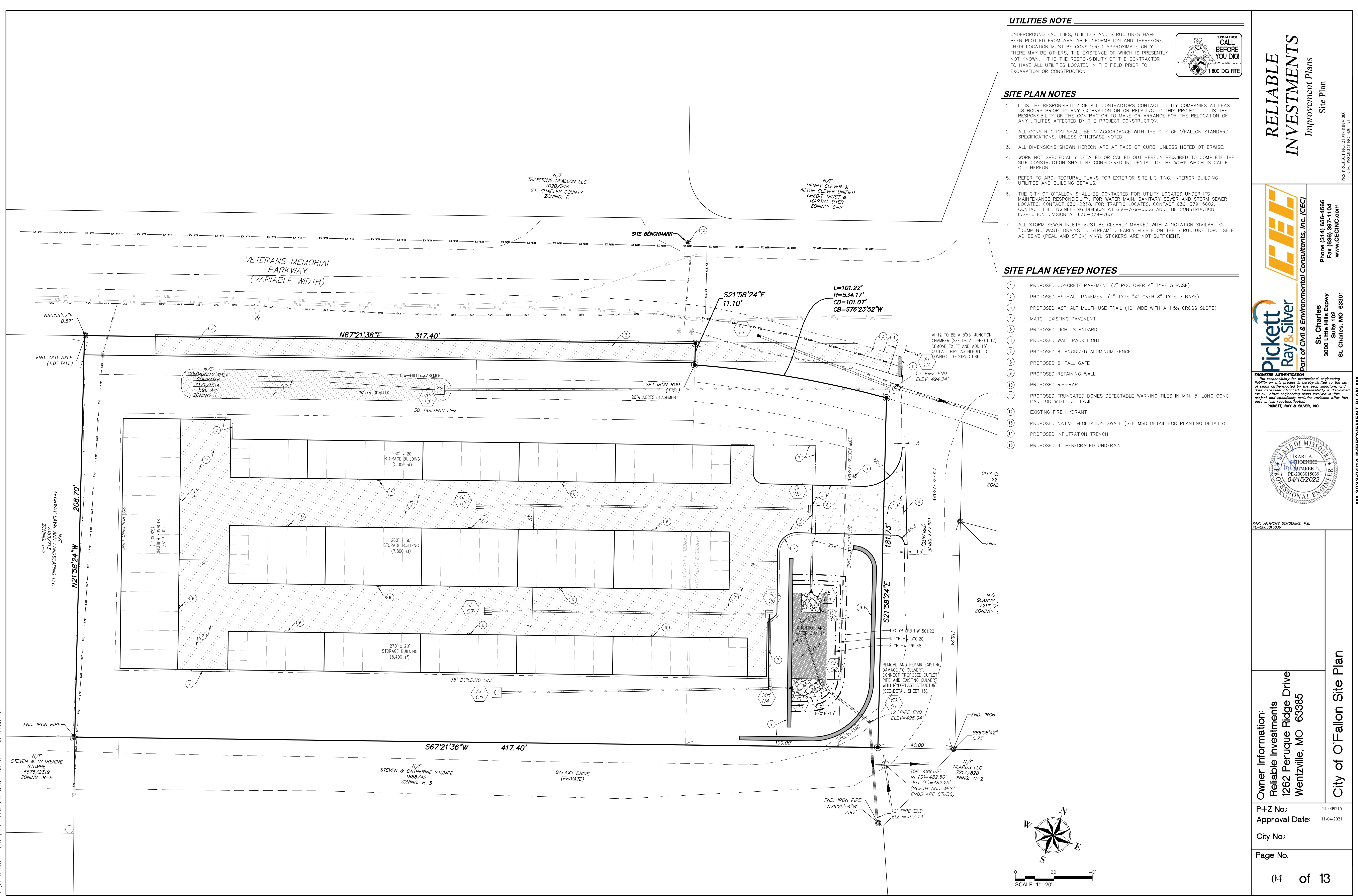


SITE PLAN NOTES

- IT IS THE RESPONSIBILITY OF ALL CONTRACTORS CONTACT UTILITY COMPANIES AT LEAST 48 HOURS PRIOR TO ANY EXCAVATION OR RELATING TO THIS PROJECT. IT IS THE RESPONSIBILITY OF THE CONTRACTOR TO MAKE OR ARRANGE FOR THE RELOCATION OF ANY UTILITIES AFFECTED BY THE PROJECT CONSTRUCTION.
- ALL CONSTRUCTION SHALL BE IN ACCORDANCE WITH THE CITY OF FALLON STANDARD SPECIFICATIONS, UNLESS OTHERWISE NOTED.
- ALL DIMENSIONS SHOWN HEREON ARE AT FACE OF CURB, UNLESS NOTED OTHERWISE.
- WORK NOT SPECIFICALLY DETAILED OR CALLED OUT HEREON REQUIRED TO COMPLETE THE SITE CONSTRUCTION SHALL BE CONSIDERED INCIDENTAL TO THE WORK WHICH IS CALLED OUT HEREON.
- REFER TO ARCHITECTURAL PLANS FOR EXTERIOR SITE LIGHTING, INTERIOR BUILDING UTILITIES AND BUILDING DETAILS.
- THE CITY OF FALLON SHALL BE CONTACTED FOR UTILITY LOCATES UNDER ITS MAINTENANCE RESPONSIBILITY. FOR WATER MAIN, SANITARY SEWER AND STORM SEWER LOCATES, CONTACT 636-2858, FOR TRAFFIC LOCATES, CONTACT 636-379-5602. CONTACT THE ENGINEERING DIVISION AT 636-379-5556 AND THE CONSTRUCTION INSPECTION DIVISION AT 636-379-7631.
- ALL STORM SEWER INLETS MUST BE CLEARLY MARKED WITH A NOTATION SIMILAR TO "DUMP NO WASTE DRAINS TO STREAM" CLEARLY VISIBLE ON THE STRUCTURE TOP. SELF ADHESIVE (PEEL AND STICK) VINYL STICKERS ARE NOT SUFFICIENT.

SITE PLAN KEYED NOTES

- PROPOSED CONCRETE PAVEMENT (7" PCC OVER 4" TYPE 5 BASE)
- PROPOSED ASPHALT PAVEMENT (4" TYPE "X" OVER 8" TYPE 5 BASE)
- PROPOSED ASPHALT MULTI-USE TRAIL (10' WIDE WITH A 1.5% CROSS SLOPE)
- MATCH EXISTING PAVEMENT
- PROPOSED LIGHT STANDARD
- PROPOSED WALL PACK LIGHT
- PROPOSED 6" ANODIZED ALUMINUM FENCE
- PROPOSED 6' TALL GATE
- PROPOSED RETAINING WALL
- PROPOSED RIP-RAP
- PROPOSED TRUNCATED DOWNS DETECTABLE WARNING TILES IN MIN. 5' LONG CONC PAD FOR WIDTH OF TRAIL
- EXISTING FIRE HYDRANT
- PROPOSED NATIVE VEGETATION SWALE (SEE MSD DETAIL FOR PLANTING DETAILS)
- PROPOSED INFILTRATION TRENCH
- PROPOSED 4" PERFORATED UNDERDRAIN



RELIABLE INVESTMENTS
Improvement Plans
Site Plan



Pickett Ray & Silver
Part of Civil & Environmental Consultants, Inc. (CEC)
St. Charles
3000 Little Hills Expwy
Suite 102
St. Charles, MO 63301

ENGINEER'S AUTHENTICATION
The responsibility for professional engineering liability on this project is hereby limited to the set of plans authorized by the seal, signature, and date hereunder attached. Responsibility is disclaimed for all other engineering plans involved in this project and specifically excludes revisions after this date unless reauthorized.
PICKETT, RAY & SILVER, INC.



KARL ANTHONY SCHOENIKE, P.E.
PE-2003015039

Owner Information:
Reliable Investments
1262 Perouque Ridge Drive
Wentzville, MO 63385

City of O'Fallon Site Plan

P+Z No.: 21-009215
Approval Date: 11-04-2021

City No.:
Page No.

K:\210427\RMV\000\DWG\OUTPUT\IMPROVEMENT PLANS\03 - SITE PLAN.DWG