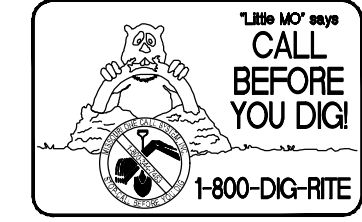


UTILITIES NOTE

UNDERGROUND FACILITIES, UTILITIES AND STRUCTURES HAVE BEEN PLOTTED FROM AVAILABLE INFORMATION AND THEREFORE, THEIR LOCATION MUST BE CONSIDERED APPROXIMATE ONLY. THERE MAY BE OTHERS, THE EXISTENCE OF WHICH IS PRESENTLY NOT KNOWN. IT IS THE RESPONSIBILITY OF THE CONTRACTOR TO HAVE ALL UTILITIES LOCATED IN THE FIELD PRIOR TO EXCAVATION OR CONSTRUCTION.



RELIABLE INVESTMENTS
Improvement Plans
Pre Drainage Map

PLS PROJECT NO. 21-009215-000
CIP PROJECT NO. 230-171



Phone (314) 666-4566
Fax (636) 397-1104
www.CECINC.com

Pickett Ray & Silver
Part of Civil & Environmental Consultants, Inc. (CEC)

St. Charles
3000 Little Hills Expwy
Suite 102
St. Charles, MO 63301

ENGINEER'S AUTHENTICATION
The responsibility for professional engineering liability on this project is hereby limited to the set of plans authorized by the seal, signature, and date hereunder attached. Responsibility is disclaimed for all other engineering plans involved in this project and specifically excludes revisions after this date unless reauthorized.



KARL ANTHONY SCHOENIKE, P.E.
PE-2003015039

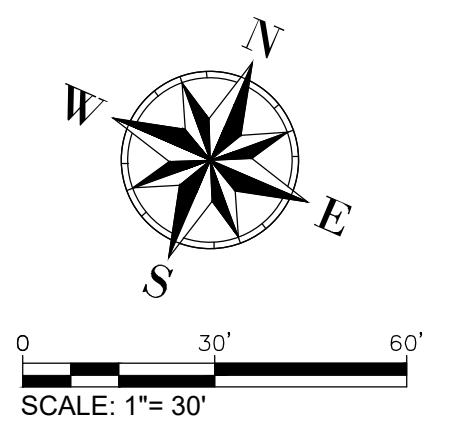
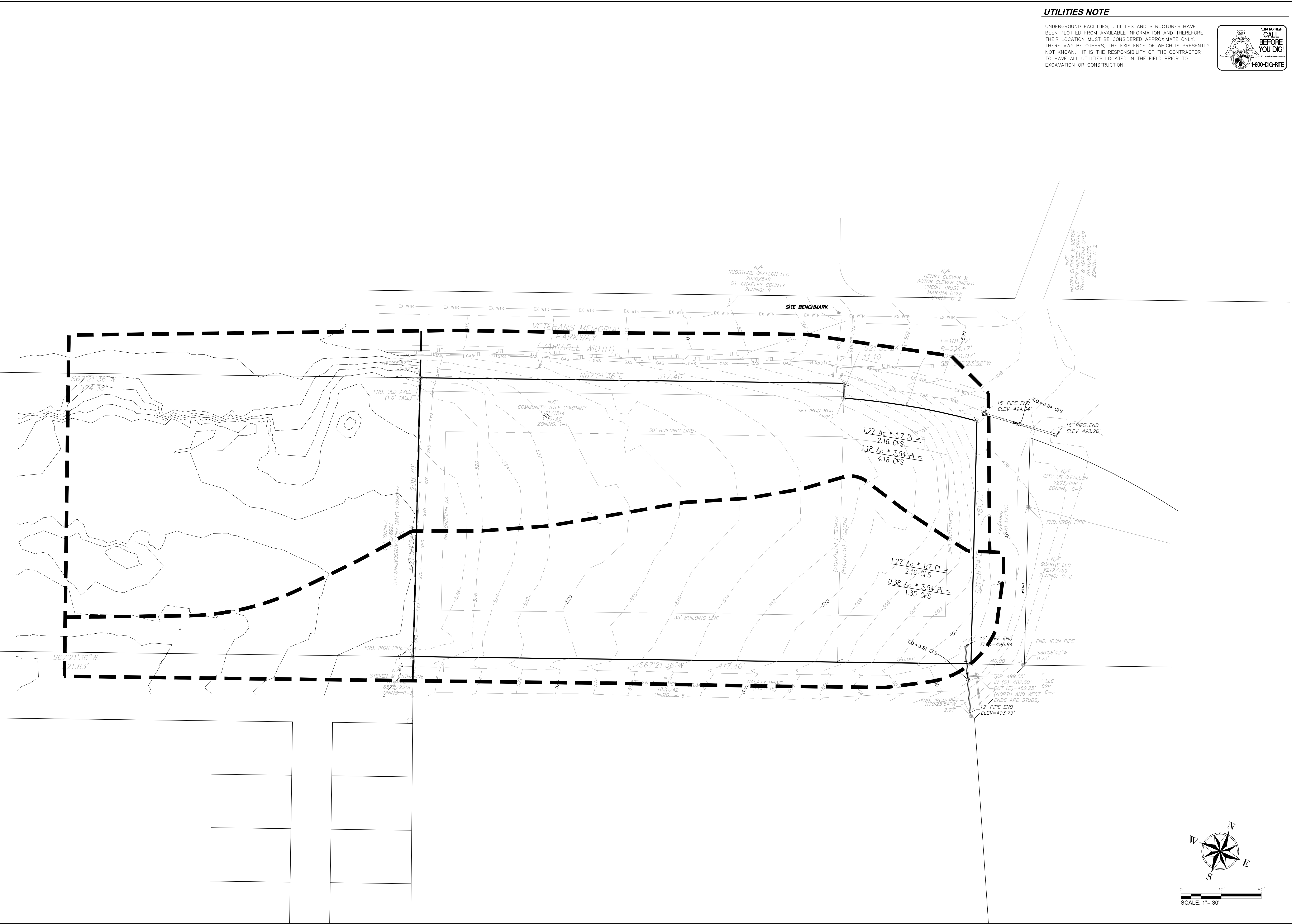
Owner Information:
Reliable Investments
1262 Perouque Ridge Drive
Wentzville, MO 63385

City of O'Fallon Site Plan

P+Z No.: 21-009215
Approval Date: 11-04-2021

City No.:
Page No.

K:\210427\RVV\000\OUTPUT\IMPROVEMENT PLANS\06 - PRE DRAINAGE MAP.DWG



*** 2022/04/14 IMPROVEMENT PLAN ***