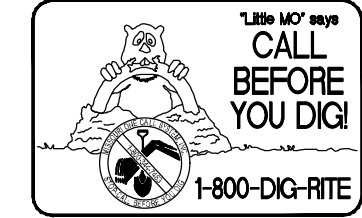


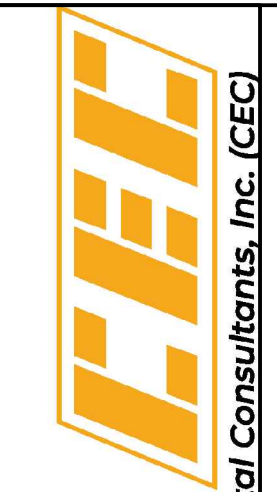
UTILITIES NOTE

UNDERGROUND FACILITIES, UTILITIES AND STRUCTURES HAVE BEEN PLOTTED FROM AVAILABLE INFORMATION AND THEREFORE, THEIR LOCATION MUST BE CONSIDERED APPROXIMATE ONLY. THERE MAY BE OTHERS, THE EXISTENCE OF WHICH IS PRESENTLY NOT KNOWN. IT IS THE RESPONSIBILITY OF THE CONTRACTOR TO HAVE ALL UTILITIES LOCATED IN THE FIELD PRIOR TO EXCAVATION OR CONSTRUCTION.



RELIABLE INVESTMENTS
 Improvement Plans
 Post Drainage Map

PLS PROJECT NO. 21047-RIN-000
 CEC PROJECT NO. 23047-1



Pickett Ray & Silver
 Part of Civil & Environmental Consultants, Inc. (CEC)
 St. Charles
 3000 Little Hills Expy
 Suite 102
 St. Charles, MO 63301

ENGINEERS AUTHENTICATION
 The responsibility for professional engineering liability on this project is hereby limited to the set of plans authorized by the seal, signature, and date hereunder attached. Responsibility is disclaimed for all other engineering plans involved in this project and specifically excludes revisions after this date unless reauthorized.
 PICKETT, RAY & SILVER, INC.



KARL ANTHONY SCHOENKE, P.E.
 PE-2003015039

Owner Information:
 Reliable Investments
 1262 Perouque Ridge Drive
 Wentzville, MO 63385

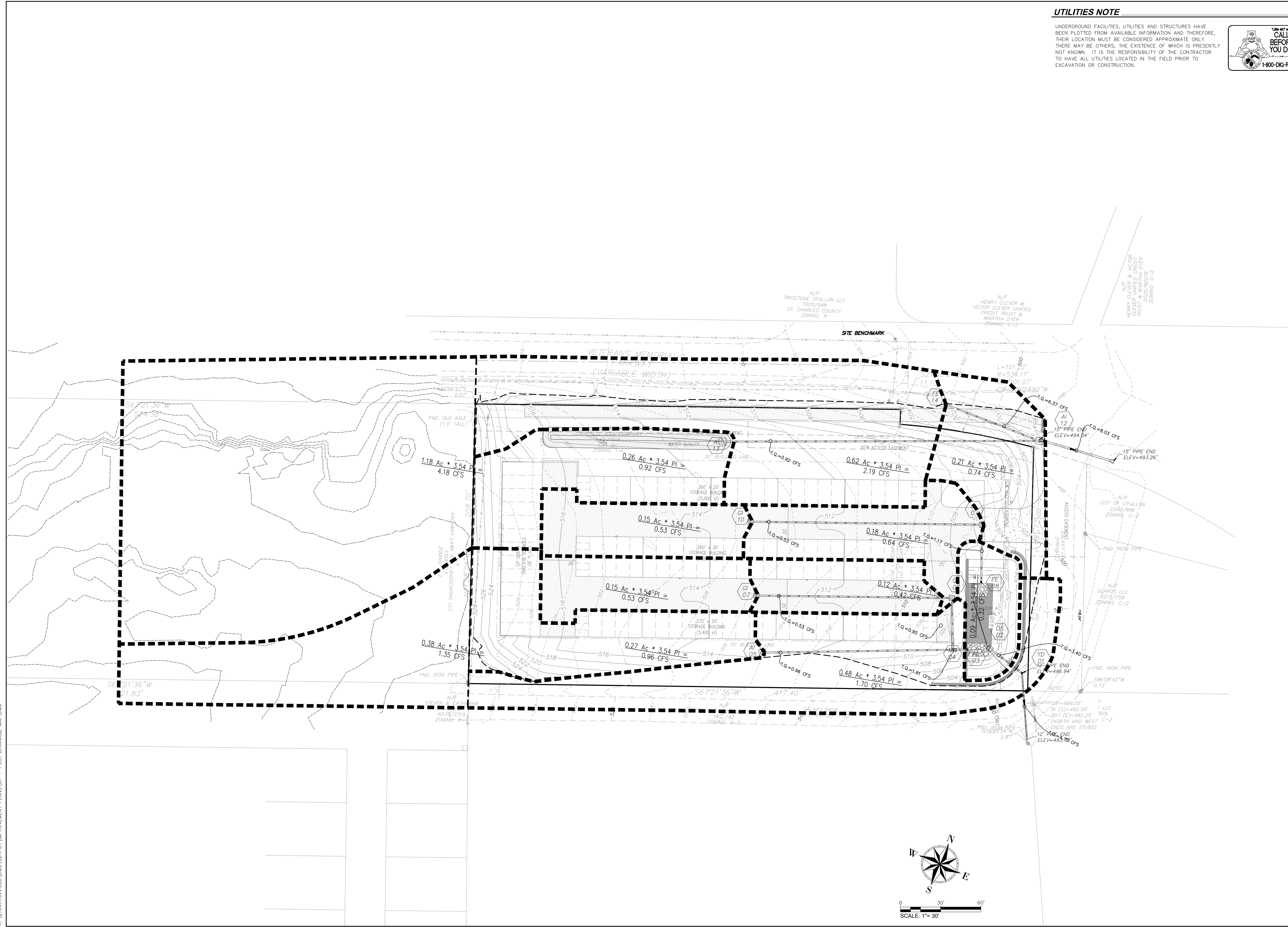
P+Z No.: 21-009215
Approval Date: 11-04-2021

City No.:

Page No.:

08 of 13

*** 2022/04/14 IMPROVEMENT PLAN ***



K:\21047-RIN\000\OUTPUT\IMPROVEMENT PLANS\07 - POST DRAINAGE MAP.DWG