

Sidewalk at Back of Curb  
STRAIGHT CURB RAMP - 6" VERTICAL CURB (TYPE 1)  
Transition at Back of Curb  
STRAIGHT CURB RAMP - 6" VERTICAL CURB (TYPE 2)

TYPE 1 AND TYPE 2 CURB RAMPS	
GRADE ALONG CURB (%)	MIN. LENGTH OF RAMP SLOPE (L.F.)
NEGATIVE (-) VALUES	6
0 TO +1	7
+1.01 TO +2	8
+2.01 TO +3	10
+3.01 TO +4	12
GREATER THAN +4	15

NOTE: Positive (+)° - Proceeding away from intersection and up a grade.  
Negative (-)° - Proceeding away from intersection and down a grade.

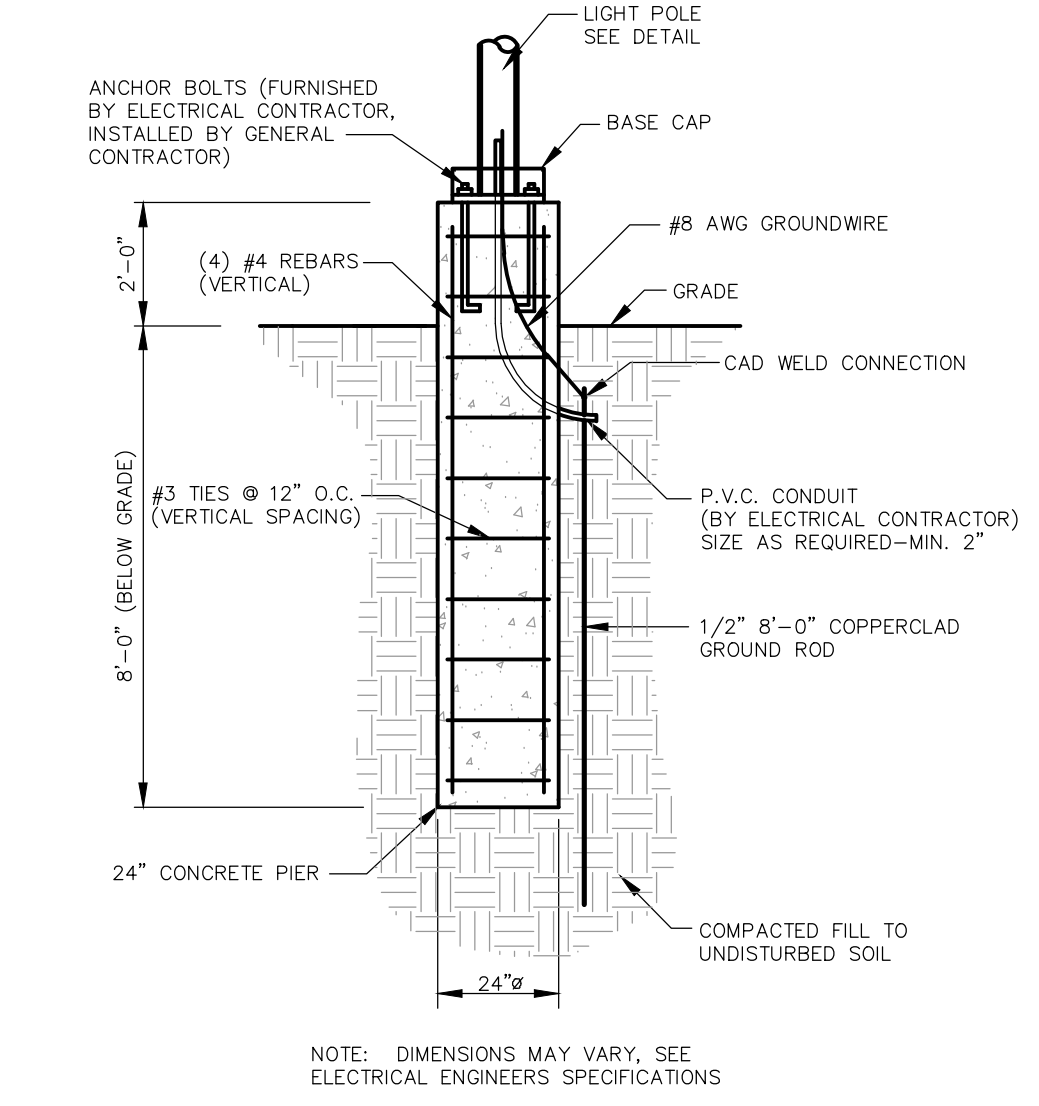


Transition at Back of Curb  
STRAIGHT CURB RAMP - 3" ROLLED CURB (TYPE 3)

TYPE 3 CURB RAMP	
GRADE ALONG CURB (%)	MIN. LENGTH OF RAMP SLOPE (L.F.)
NEGATIVE (-) VALUES	3
0 TO +2	4
+2.01 TO +3	5
+3.01 TO +4	6
+4.01 TO +5	8
+5.01 TO +6	11
GREATER THAN +6	15

NOTE: Positive (+)° - Proceeding away from intersection and up a grade.  
Negative (-)° - Proceeding away from intersection and down a grade.

- ### GENERAL NOTES
- Do not scale drawing. Follow dimensions.
  - Sidewalk and sidewalk curb ramps shall be constructed in accordance with these details and the current approved Americans with Disabilities Act Accessibility Guidelines (ADAAG).
  - Provide a landing at the top of each straight ramp when the Grade Along Curb (GAC) is greater than 2.2 and less than 4.0. For other values of GAC, including all negative (-) values, no landing is required.
  - Minimum sidewalk width along 6" vertical curb shall be 5 feet. Minimum sidewalk width along 3" rolled curb shall be 4 feet.
  - Maximum sidewalk cross slope 0.02%/ft.
  - All sidewalk sections shall be 4" thick, except where indicated on 7" thick by abated portions shown on details. All sidewalk sections and curb ramps, regardless of thickness, shall be paid for on Concrete Sidewalk.
  - Where curb ramp meets pavement, bullnose will not be permitted.
  - Construct a diagonal ramp when the maximum corner radius allowed for a straight ramp is exceeded.
  - If monolithic concrete curb is constructed, strike a dummy joint across bottom of ramp of curb line. If concrete curb is dowel-on, block out pavement to provide full depth curb across ramp from outer point of curb taper to outer point of curb taper.
  - For sidewalk locations on Curb-to-Sidewalk, refer to Pavement Construction Details.
  - For pavement longitudinal and transverse joints and tie bar requirements and dimensions, refer to the Pavement Construction Details for Joints and Curbs, Std. Det. C201.03.
  - For roadway cross slopes, pavement types, and thicknesses, refer to Standard Typical Section.
  - All curb ramps shall have a detectable warning complying with ADAAG.
  - Truncated domes for curb ramps located in public right of way shall meet ADA requirements and shall be constructed using red pre-cast truncated domes such as those manufactured by Arco Tile or approved equal.



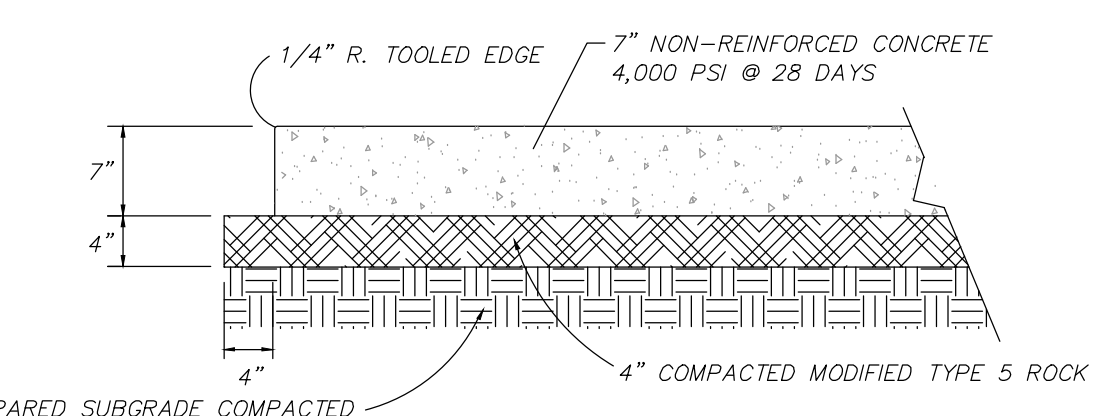
**LIGHT POLE BASE DETAIL**  
N.T.S.

**SAINT CHARLES COUNTY  
HIGHWAY DEPARTMENT  
ST. CHARLES, MISSOURI**

**PAVEMENT CONSTRUCTION DETAILS  
CONCRETE SIDEWALK  
AND CURB RAMPS**

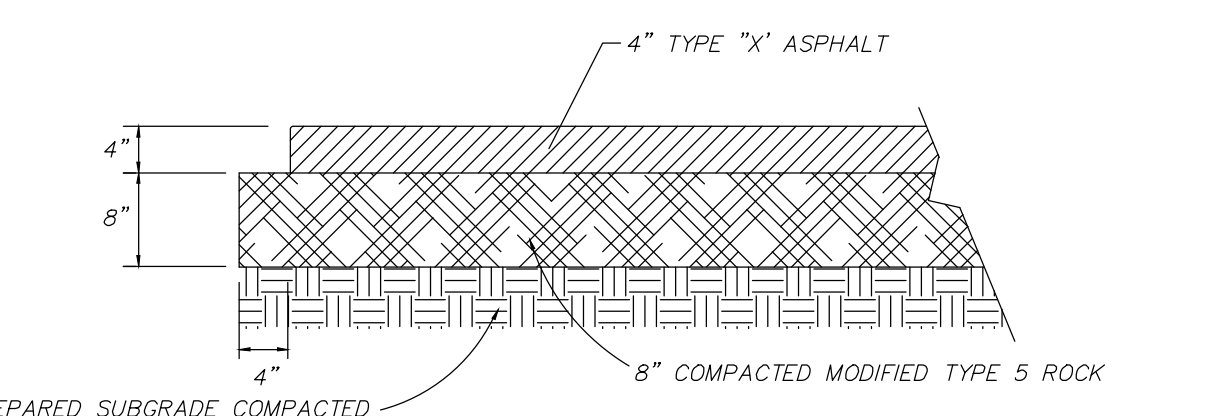
DATE: June, 2002 DRAWING C608.10

NOTE: ALL NON-REINFORCED CONCRETE SHALL BE 4,000 p.s.i. AT 28 DAYS.



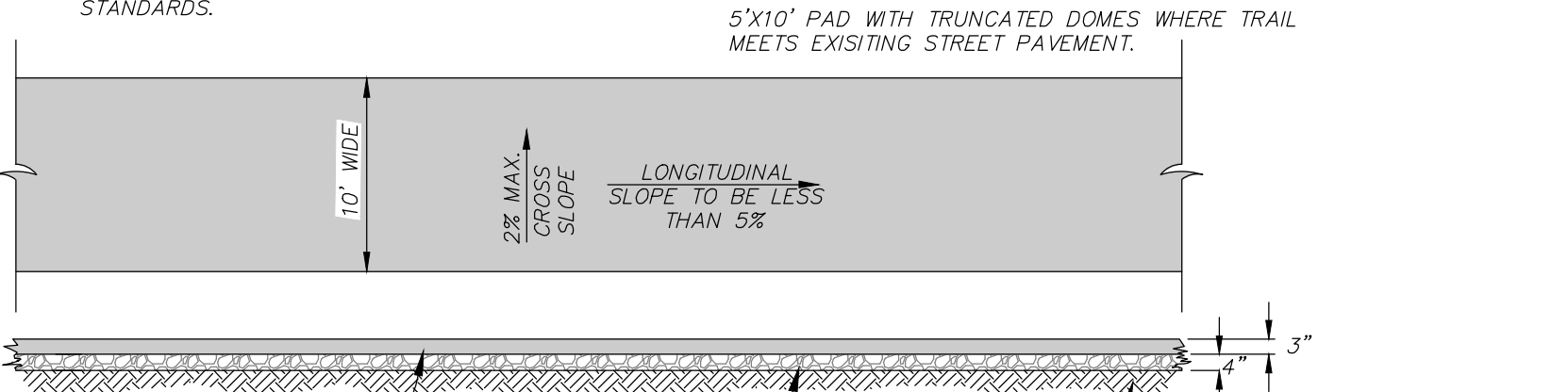
**CONCRETE PAVEMENT DETAIL**  
N.T.S.

NOTE: THE ASPHALT SURFACE SHALL BE COMPACTED TO 98% MAXIMUM DENSITY.

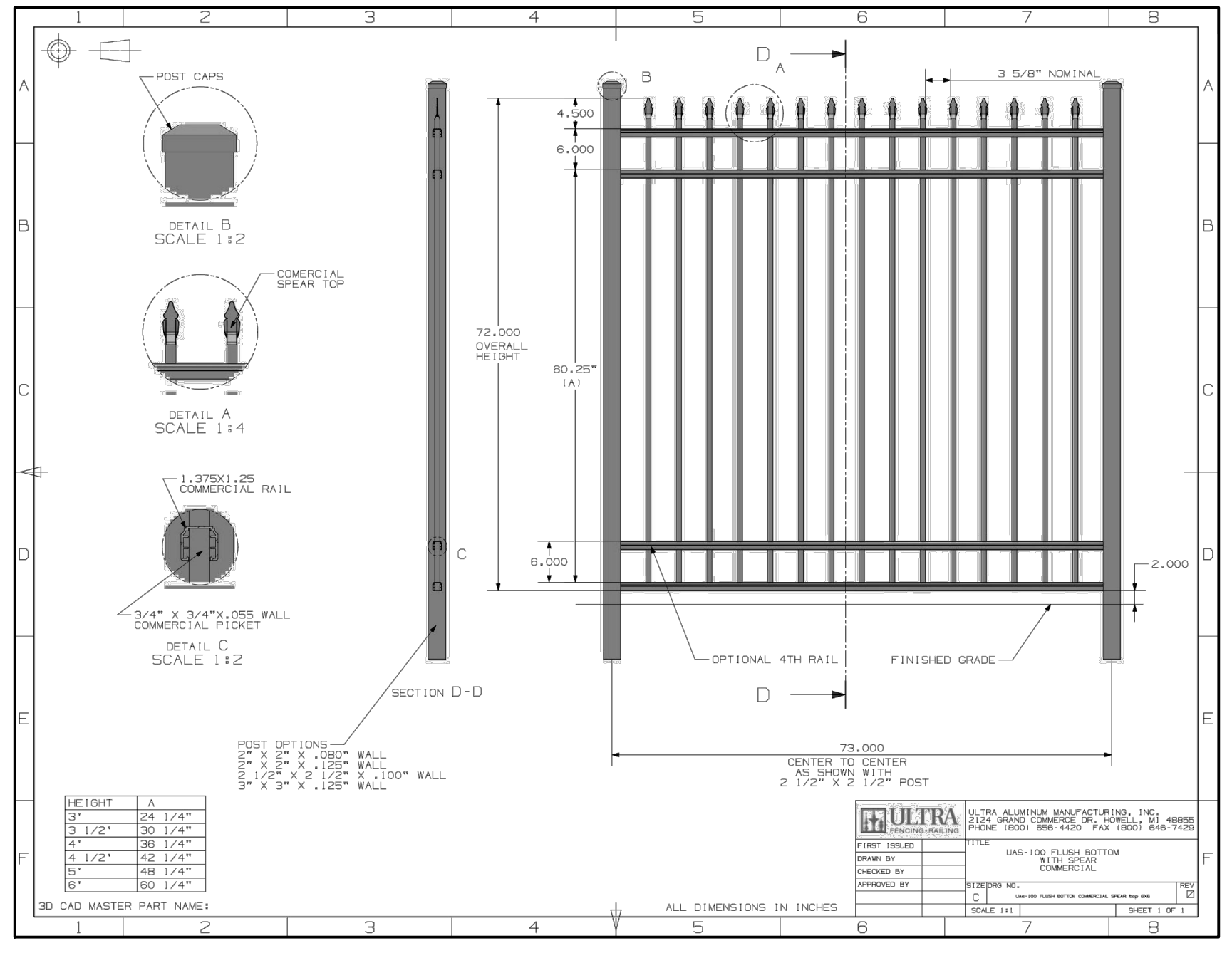


**ASPHALT PAVEMENT DETAIL**  
N.T.S.

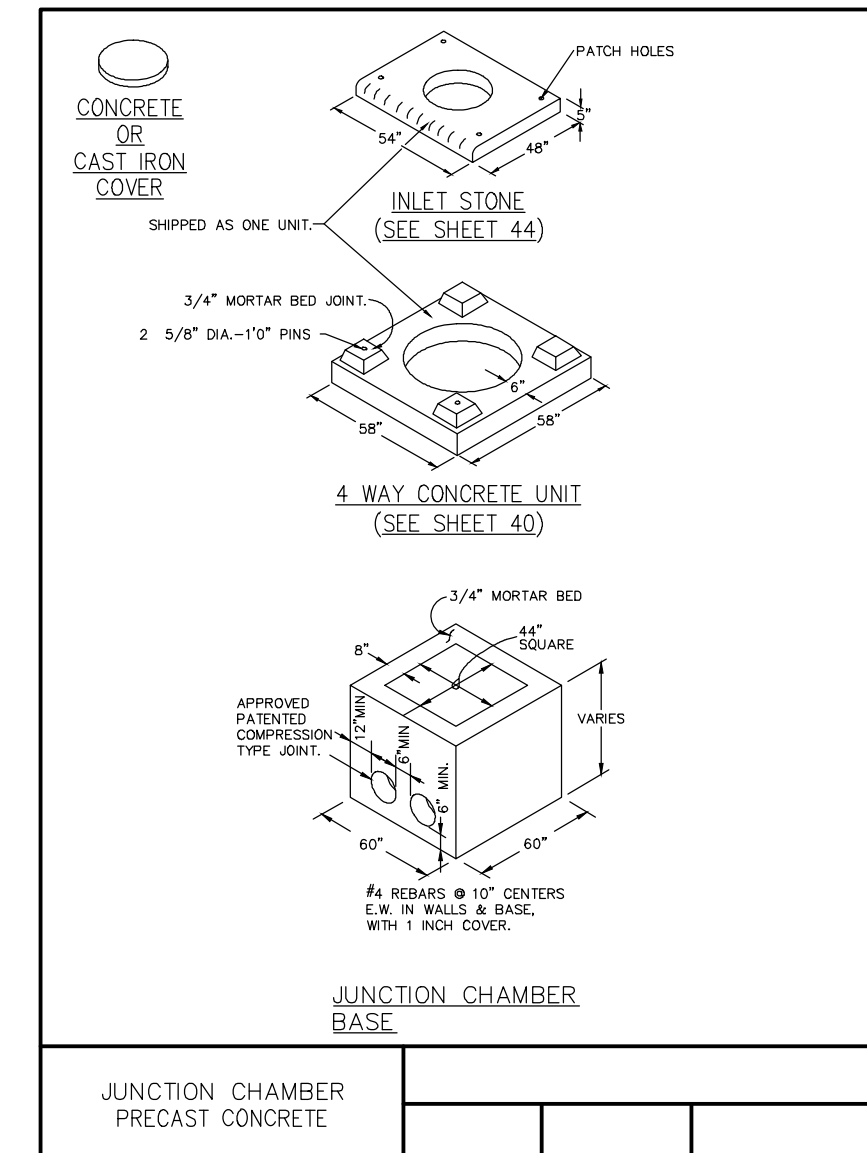
NOTE: THE ASPHALT SURFACE SHALL BE COMPACTED TO 98% MAXIMUM DENSITY.



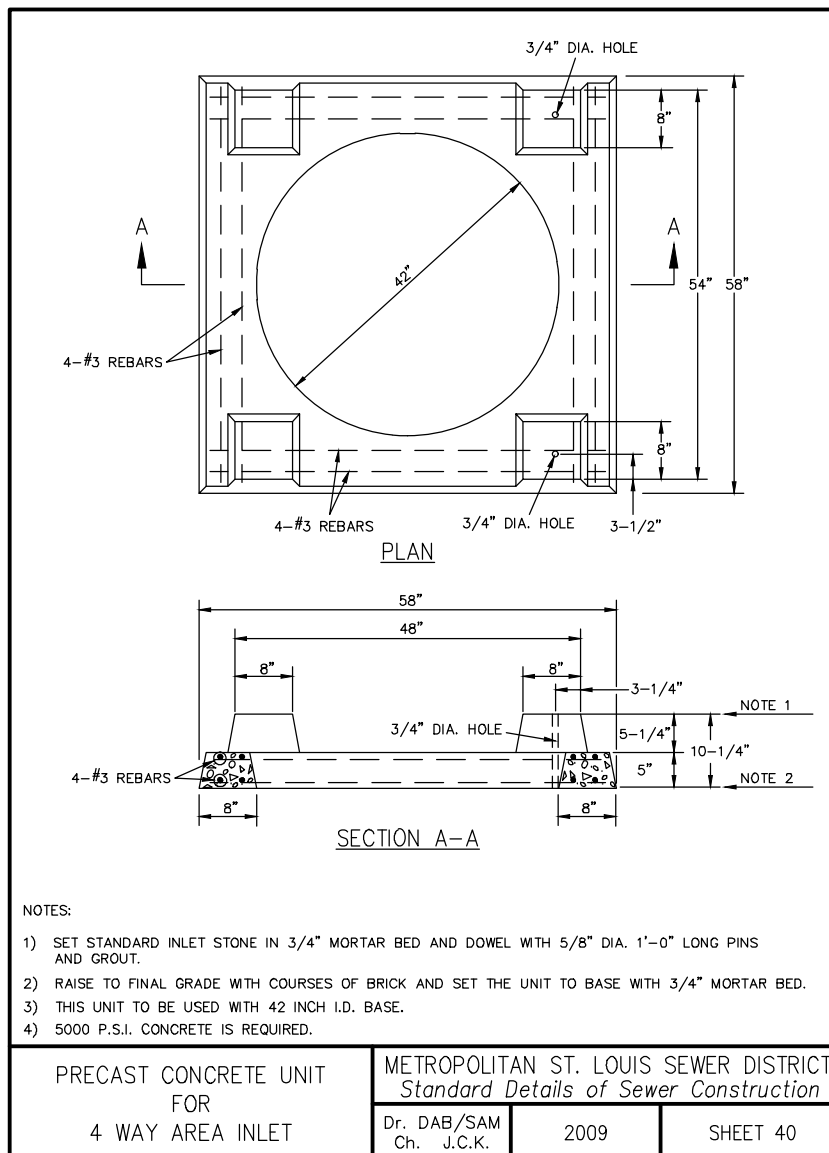
**MULTI-USE TRAIL DETAIL**  
N.T.S.



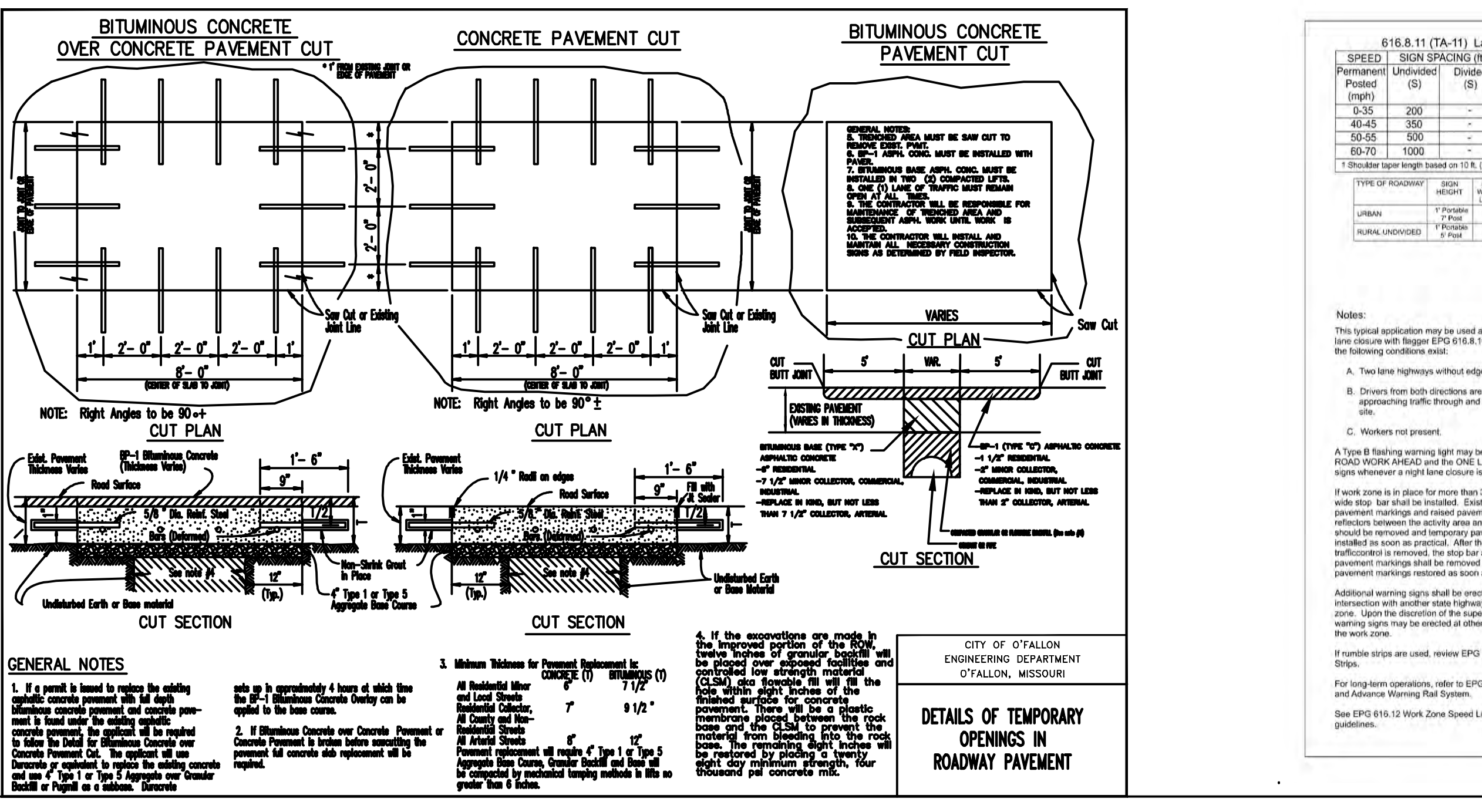
**4-WAY CONCRETE UNIT**  
(SEE SHEET 40)



**JUNCTION CHAMBER PRECAST CONCRETE**



**PRECAST CONCRETE UNIT FOR 4-WAY AREA INLET**



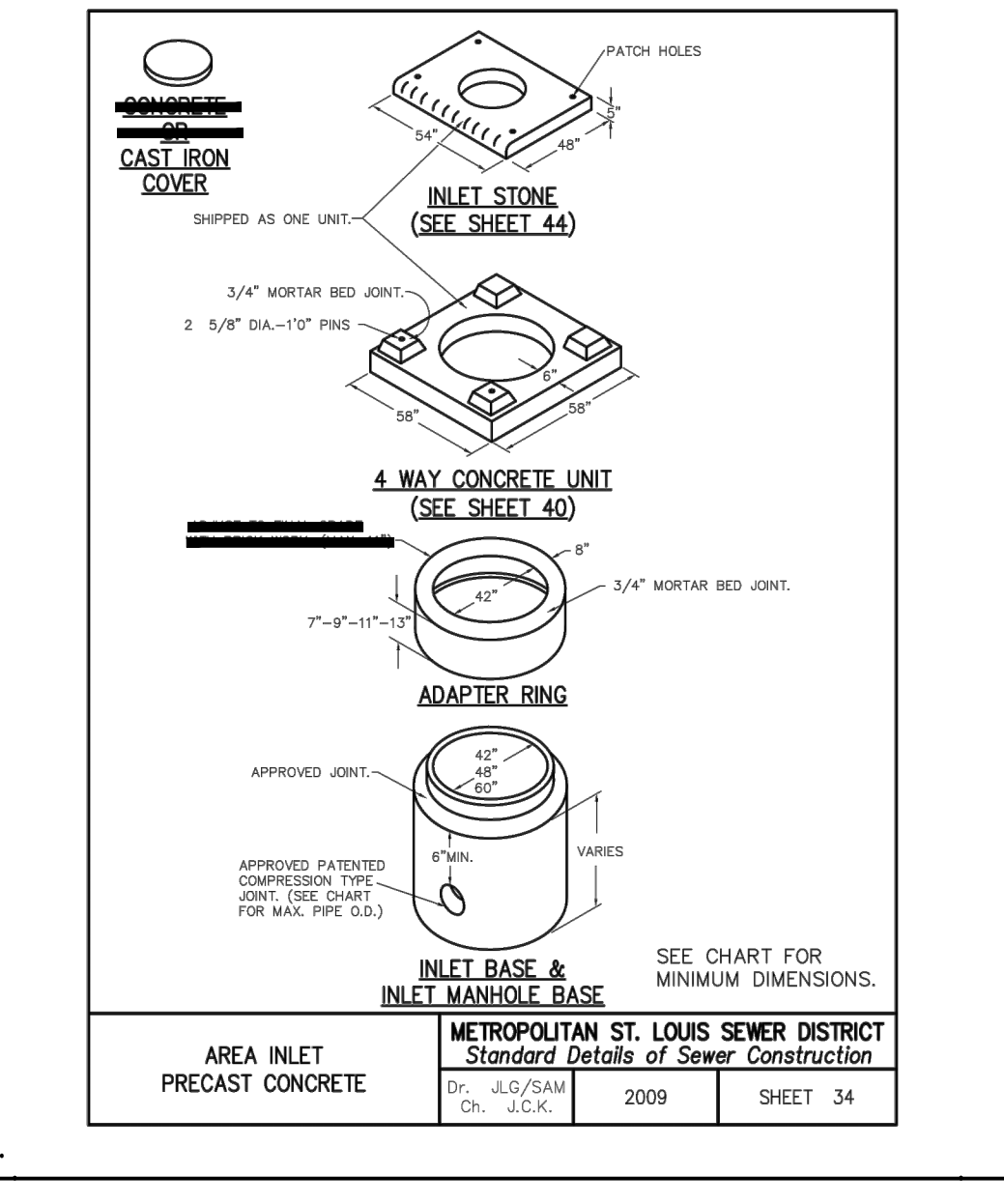
616.8.11 (TA-11) Lane Closure on Two-Lane Highways without Edgelines - MT

SPEED (mph)	SIGN SPACING (ft.)	TAPER LENGTH (ft.)	OPTIONAL BUFFER LENGTH (ft.)	CHANNELIZER SPACING (ft.)
35-50	200	-	-	40
40-45	350	-	-	60
50-55	500	-	-	80
55-70	1000	-	-	120

1. Shoulder taper length based on 12 ft. standard shoulder width offset. 2. Lane taper length based on 12 ft. standard lane width offset.

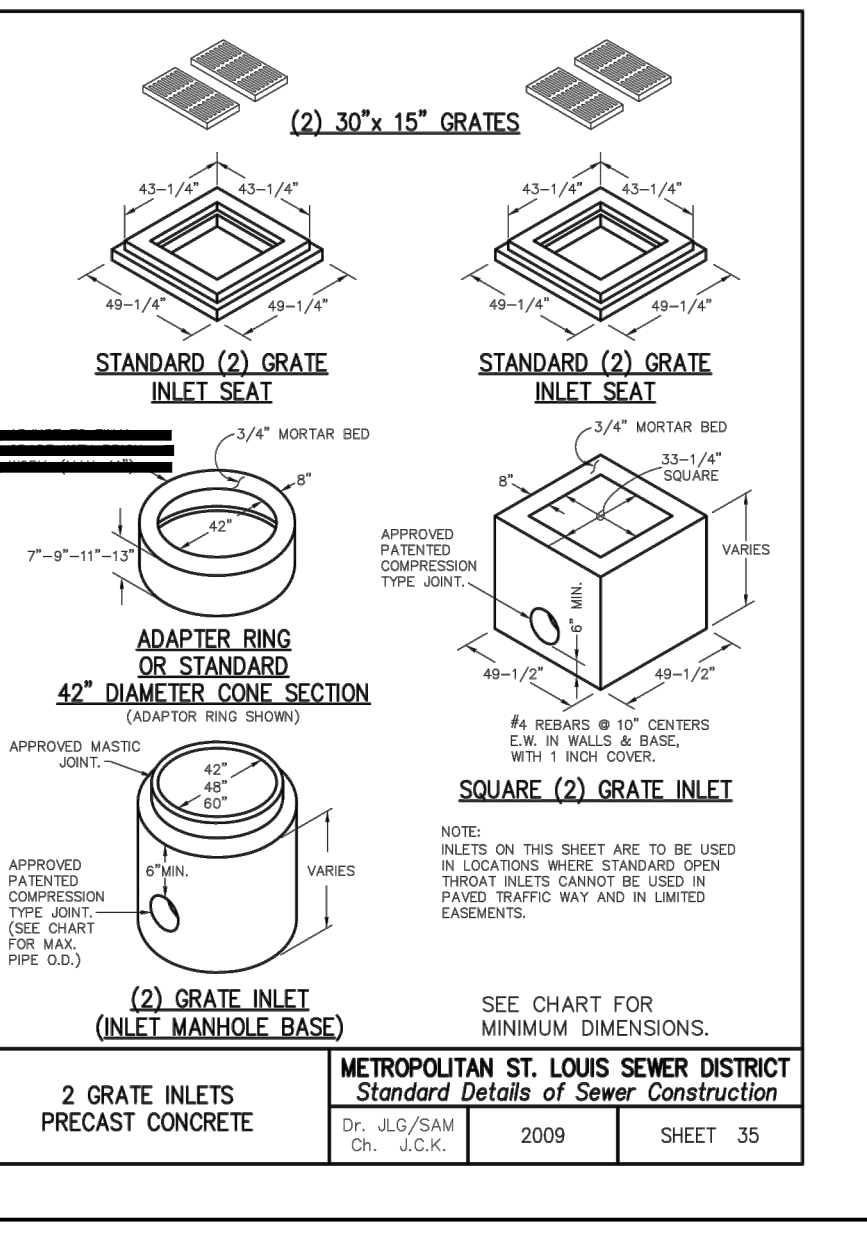
Notes:  
A. Two lane highways without edgelines.  
B. Drivers from both directions are able to see approaching traffic through and beyond the work site.  
C. Workers not present.  
D. Type B flashing warning light may be placed on the ROAD WORK AHEAD and the ONE LANE ROAD AHEAD sign whenever a night lane closure is necessary.  
E. If work zone is in place for more than 3 days, a 12-inch wide stop bar shall be installed. Existing conflicting pavement markings and road pavement markings shall be removed and temporary pavement markings installed as soon as practical. After the temporary traffic control is removed, the stop bar and other temporary pavement markings shall be removed and the permanent pavement markings restored as soon as practical.  
F. Additional warning signs shall be placed at each intersection with another state highway within the work zone. Upon the direction of the supervisor, additional warning signs may be placed at other intersections within the work zone.  
G. If traffic signs are used, refer to EPG 616.8.07 Florida Sign.  
H. For long term operations, refer to EPG 616.8.22 Fugate and Advance Warning Rail System.  
I. See EPG 616.12 Work Zone Speed Limits for speed limit guidelines.

NOTE: ACCESS LIDS TO BE CAST IRON



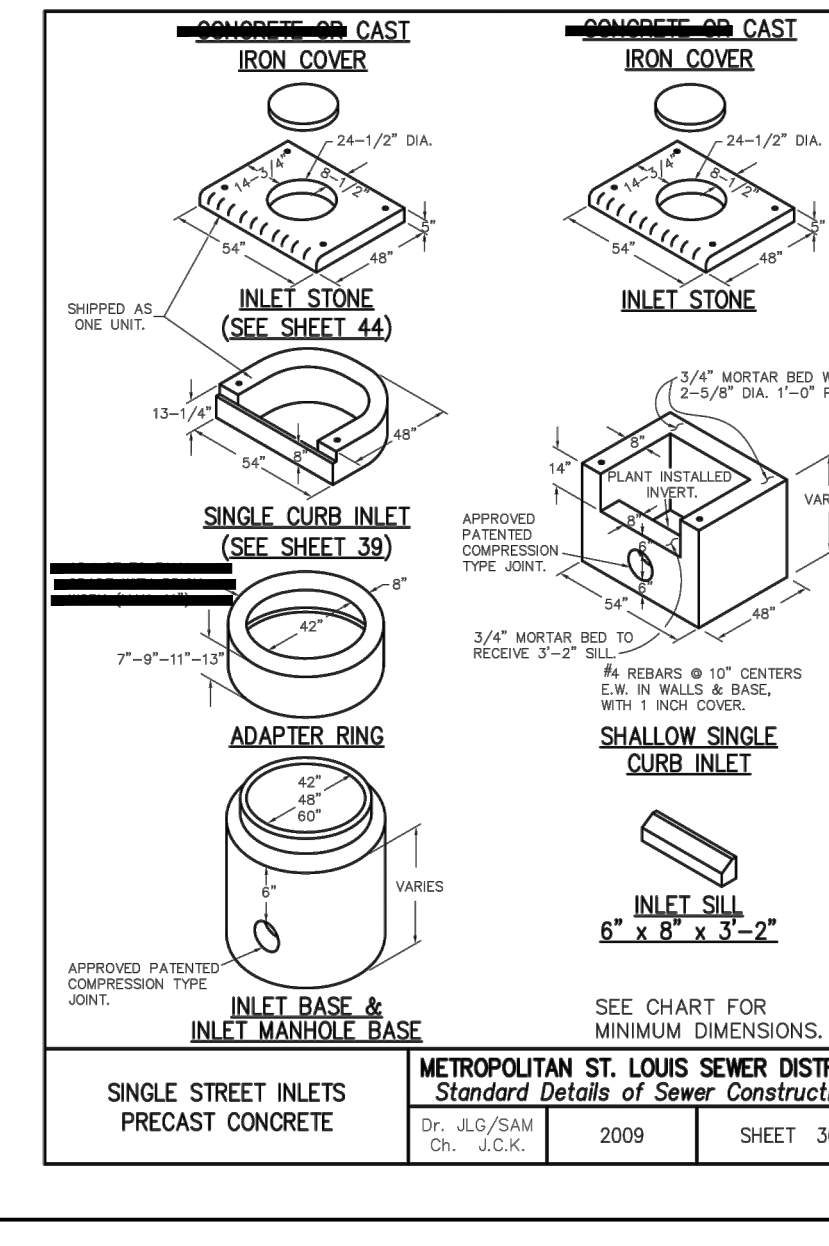
**AREA INLET PRECAST CONCRETE**

NOTE: ACCESS LIDS TO BE CAST IRON



**2 GRATE INLETS PRECAST CONCRETE**

NOTE: ACCESS LIDS TO BE CAST IRON



**SINGLE STREET INLETS PRECAST CONCRETE**

**RELIABLE INVESTMENTS**  
Improvement Plans  
Details

**Pickett Ray & Silver**  
Part of Civil & Environmental Consultants, Inc. (CEC)

Phone (314) 666-4566  
Fax (636) 397-1104  
www.PICKETTINC.com

St. Charles  
3000 Little Hills Esplanade  
Suite 102  
St. Charles, MO 63301

ENGINEERS AUTHORIZATION  
This responsibility for professional engineering liability on this project is hereby limited to the set of plans authorized by the seal, signature, and date hereunder attached. Responsibility is disclaimed for all other engineering plans involved in this project and specifically includes revisions after this date unless reauthorized.

**PICKETT, RAY & SILVER, INC.**

KARL A. SCHOENKE  
MEMBER  
PE-2003015039  
04/15/2022

KARL ANTHONY SCHOENKE, P.E.  
PE-2003015039

City of O'Fallon Site Plan

Owner Information:  
Reliable Investments  
1262 Perouque Ridge Drive  
Wentzville, MO 63385

P+Z No.: 21-009215  
Approval Date: 11-04-2021  
City No.:  
Page No. 11 of 13