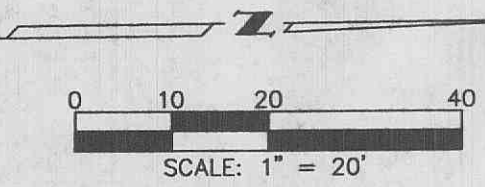
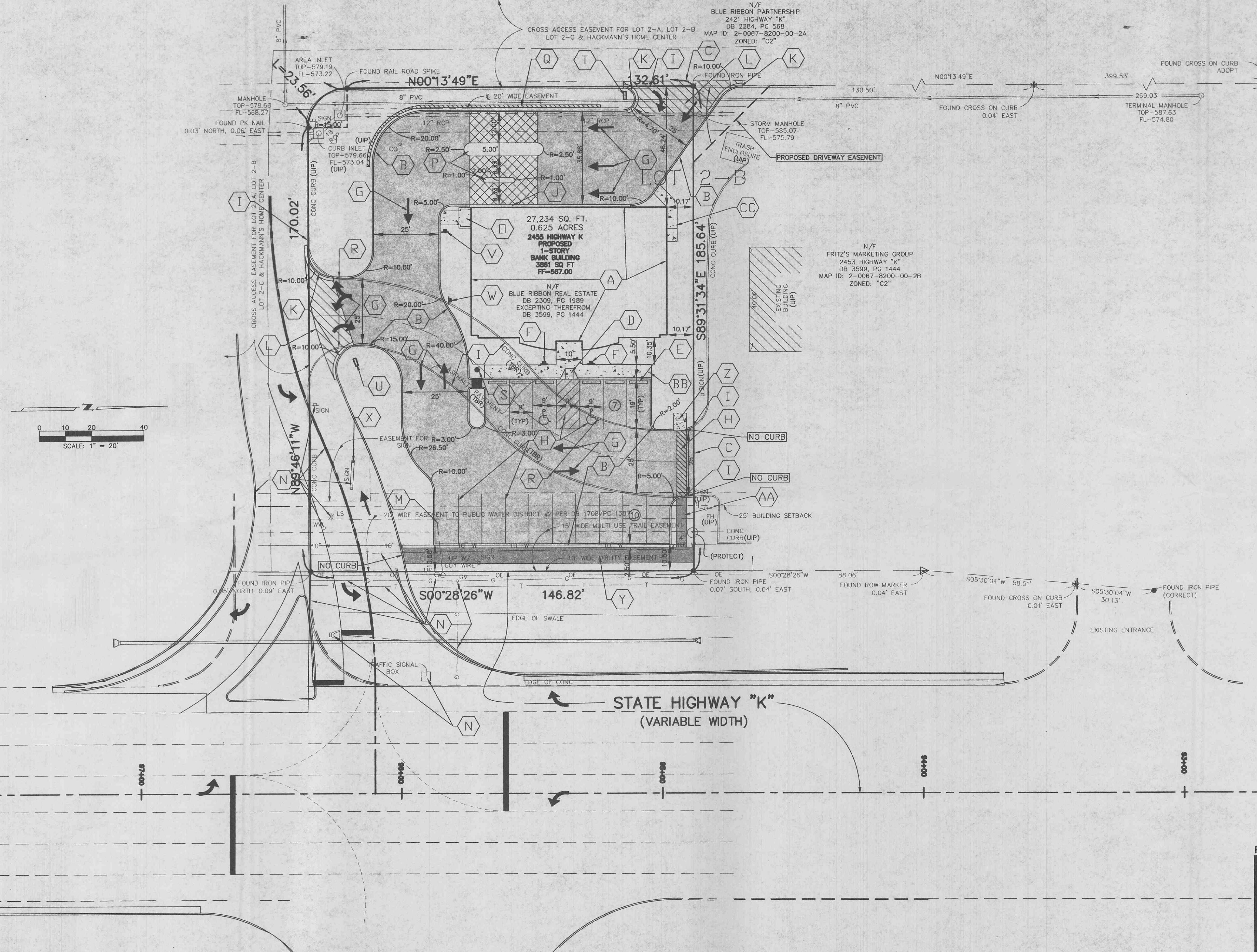


# RELIANCE BANK

PART OF LOT 2B OF HIGHWAY "K" CENTER, PLAT BOOK 35, PAGE 399  
(NORTHWEST CORNER OF MISSOURI STATE HIGHWAY K & HUTCHINGS FARM)  
CITY OF O'FALLON, ST. CHARLES COUNTY, MISSOURI

LOT 2-A OF HIGHWAY "K" CENTER



- CONSTRUCTION NOTES**
- (A) FOR ACTUAL BUILDING DIMENSIONS, SEE ARCHITECTURAL PLANS.
  - (B) NEW 6" CONCRETE VERTICAL CURB. SEE DETAIL ON SHEET C5.
  - (C) SAWCUT EXISTING PAVEMENT TO SMOOTH VERTICAL FACE.
  - (D) BUILD NEW ACCESSIBLE RAMP. SEE DETAIL ON SHEET C5.
  - (E) NEW WHEEL STOP.
  - (F) NEW ACCESSIBLE SIGN. SEE DETAIL ON SHEET C5.
  - (G) NEW PAINTED DIRECTIONAL ARROWS (TYP).
  - (H) NEW 4" WIDE PARKING STRIPE (TYP).
  - (I) REMOVE EXISTING CURB FROM JOINT TO JOINT AS NECESSARY FOR CONSTRUCTION OF NEW PARKING LOT.
  - (J) NEW 1" WIDE 6" CONCRETE VERTICAL CURB.
  - (K) NEW 6" CONCRETE VERTICAL CURB AND GUTTER. SEE DETAIL ON SHEET C5.
  - (L) CONSTRUCT NEW DRIVE ENTRANCE PER THE CITY OF O'FALLON'S STANDARDS. SEE ENTRANCE DETAILS ON SHEET C6.
  - (M) EXISTING GUY WIRE TO BE RELOCATED. COORDINATE WITH ELECTRIC COMPANY.
  - (N) PROPOSED STREET CONSTRUCTION. UTILITY RELOCATION & DEMOLITION WILL BE DONE BY OTHERS.
  - (O) NEW MASONRY AND BRICK SITE PROOF DUMPSTER AREA. SEE SHEET C8 FOR DETAILS. THE DUMPSTER AREA CONTAINS RESIDENTIAL SIZE CANS. COMMERCIAL DUMPSTERS ARE NOT USED.
  - (P) NEW RAISED CONCRETE ISLAND.
  - (Q) NEW MODULAR RETAINING WALL. ALL WALLS SHALL BE DESIGN/BUILD BY THE CONTRACTOR AND SHALL MEET ALL LOCAL BUILDING CODES. IT SHALL BE THE CONTRACTOR'S RESPONSIBILITY TO SUBMIT PLANS AND OBTAIN THE REQUIRED PERMITS FROM THE CITY OF O'FALLON AND/OR ST. CHARLES COUNTY. SEE DETAIL ON SHEET C5.
  - (R) EXISTING DRIVE SHALL BE REMOVED BY CONTRACTOR.
  - (S) NEW 20' HIGH FLAG POLE.
  - (T) NEW ONE WAY DIRECTIONAL SIGN PER CITY OF O'FALLON ORDINANCE.
  - (U) NEW ENTRANCE SIGN.
  - (V) NEW DO NOT ENTER/ONE WAY SIGN.
  - (W) NEW RIGHT TURN ONLY SIGN.
  - (X) "BUSTER 1'S" SIGN WILL BE MOVED TO A NEW LOCATION OFFSITE. THIS WILL BE HANDLED UNDER THE INTERSECTION CONSTRUCTION CONTRACT.
  - (Y) NEW 6' WIDE ASPHALT MULTI USE TRAIL. SEE DETAIL ON SHEET C5.
  - (Z) NEW 6' X 5' CONCRETE PAD WITH 4 SPACE BICYCLE RACK ANCHORED TO PAD. SEE DETAILS ON SHEET C5 AND SHEET C8.
  - (AA) NEW 4" WIDE ASPHALT PEDESTRIAN WALK.
  - (BB) BUILD NEW CONCRETE SIDEWALK AT CURB. SEE DETAIL ON SHEET C5.
  - (CC) BUILD NEW CONCRETE SIDEWALK. SEE DETAIL ON SHEET C5.

- NEW 3" THICK TYPE "C" ASPHALTIC CONCRETE SURFACE COURSE ON 4" THICK AGGREGATE BASE COURSE.
- NEW 3" THICK TYPE "C" ASPHALTIC CONCRETE SURFACE COURSE ON 8" THICK AGGREGATE BASE COURSE.
- NEW 4" THICK P.C. CONCRETE ON 4" THICK AGGREGATE BASE COURSE.
- NEW 5" THICK P.C. CONCRETE.
- NEW 7" THICK P.C. CONCRETE ON 4" THICK AGGREGATE BASE.

- NOTES:**
1. ALL DIMENSIONS ARE TO FACE OF CURB.
  2. THIS SITE COMPLIES WITH ARTICLE XIII OF THE CITY OF O'FALLON'S ZONING CODE.
  3. THE REALIGNED ENTRANCE OFF OF HIGHWAY "K" IS NOT YET APPROVED. THE SITE PLAN MAY NEED TO BE MODIFIED TO MATCH THE ENTRANCE PLANS AT THE TIME THEY ARE APPROVED.
  4. ALL PROPOSED FENCING REQUIRES A SEPERATE PERMIT THROUGH THE PLANNING DIVISION.
  5. ALL SIGN LOCATIONS AND SIZES MUST BE APPROVED SEPERATLY THROUGH THE PLANNING DIVISION. A SEPERATE SIGN PERMIT IS REQUIRED FOR ALL SIGNS.
  6. ALL SIGN POSTS, BACKS AND BRACKET ARMS SHALL BE PAINTED BLACK USING CARBOLOK RUSTBOND PENETRATING SEALER SG AND CARBOLOK 133 HB PAINT (OR EQUIVALENT AS APPROVED BY CITY AND MDDOT). SIGNS DESIGNATING STREET NAME SHALL BE ON THE OPPOSITE SIDE OF THE STREET FROM TRAFFIC CONTROL SIGNS.
  7. BOUNDARY ADJUSTMENT PLAT WILL BE CREATED, APPROVED AND RECORDED TO ALLOW SIGNAL CONSTRUCTION AND MAINTENANCE OF THE ROADWAY.

**PLANNING & ZONING FILE #0604**

**Poehlman & Prost, Inc.**  
Land Surveying and Civil Engineering

P.O. Box 6340  
5280 Dehman Industrial Drive  
St. Louis, Missouri 63132  
(314) 997-5777  
FAX 997-0407  
E-Mail: ppi@poehlman-prost.com

ISSUE DATE: 1-16-04	
DRAWN BY: B. URBAN II	DATE: 1-16-04
CHECKED BY: T. HAMILTON	DATE: 1-16-04
PROOFED #: 2045MH	DATE: 1-16-04

Project: **RELIANCE BANK (NORTHWEST CORNER OF MISSOURI STATE HIGHWAY K & HUTCHINGS FARM)**

Prepared For: **RELIANCE BANK  
11781 MANCHESTER  
DES PERES, MISSOURI 63131  
314-965-5300 FAX: 314-965-0321**

Sheet Title: **SITE AND DEMOLITION PLAN**

Project Number: 203-078  
Sheet: C3 OF 8

**ENGINEERING/SURVEYING AUTHENTICATION**  
THE RESPONSIBILITY FOR PROFESSIONAL ENGINEERING/SURVEYING LIABILITY ON THIS PROJECT IS HEREBY LIMITED TO THE SET OF PLANS AUTHENTICATED BY THE SEAL, SIGNATURE AND DATE HERE UNDER ATTACHED. RESPONSIBILITY IS DISCLAIMED FOR ALL OTHER ENGINEERING/SURVEYING PLANS INVOLVED IN THE PROJECT AND SPECIFICALLY EXCLUDES REVISIONS AFTER THIS DATE UNLESS RE-AUTHENTICATED.

**ENGINEERING/SURVEYING RELEASE**  
THE ORIGINAL OF THIS DRAWING IS ON FILE AT THE OFFICE OF POEHLMAN & PROST, INC. ANY MODIFICATIONS TO THIS DRAWING SHALL RELEASE SAID POEHLMAN & PROST, INC., THE ENGINEER AND/OR SURVEYOR WHOSE SEAL APPEARS HEREON FROM ANY LIABILITY RESULTING FROM SAID UNAUTHORIZED MODIFICATIONS.

**BEFORE YOU  
DIG - DRILL - BLAST**  
Call 1-800-344-7483  
(TOLL FREE)  
MISSOURI ONE CALL SYSTEM, INC.

**UTILITY LOCATION NOTE**

THE UNDERGROUND UTILITIES SHOWN HEREIN WERE PLOTTED FROM AVAILABLE INFORMATION AND DO NOT NECESSARILY REFLECT THE ACTUAL EXISTENCE, NONEXISTENCE, SIZE, TYPE, NUMBER OR LOCATION OF THESE OR OTHER UTILITIES. THE GENERAL CONTRACTOR SHALL BE RESPONSIBLE FOR VERIFYING THE ACTUAL LOCATION OF ALL UTILITIES, SHOWN OR NOT SHOWN, AND SAID UTILITIES SHALL BE LOCATED IN THE FIELD PRIOR TO ANY GRADING, EXCAVATION OR CONSTRUCTION OF IMPROVEMENTS. THESE PROVISIONS SHALL IN NO WAY ABSOLVE ANY PARTY FROM COMPLYING WITH THE UNDERGROUND FACILITY SAFETY AND DAMAGE PREVENTION ACT, CHAPTER 319, RSMO.

P:\2003\03-07\RE\Engineering\Site Improvement\Plans\Rev\03-07-03-SITE DEMO PLAN.dwg, 6/17/2004 2:11:10 PM, Shari