



DRAWING LEGEND

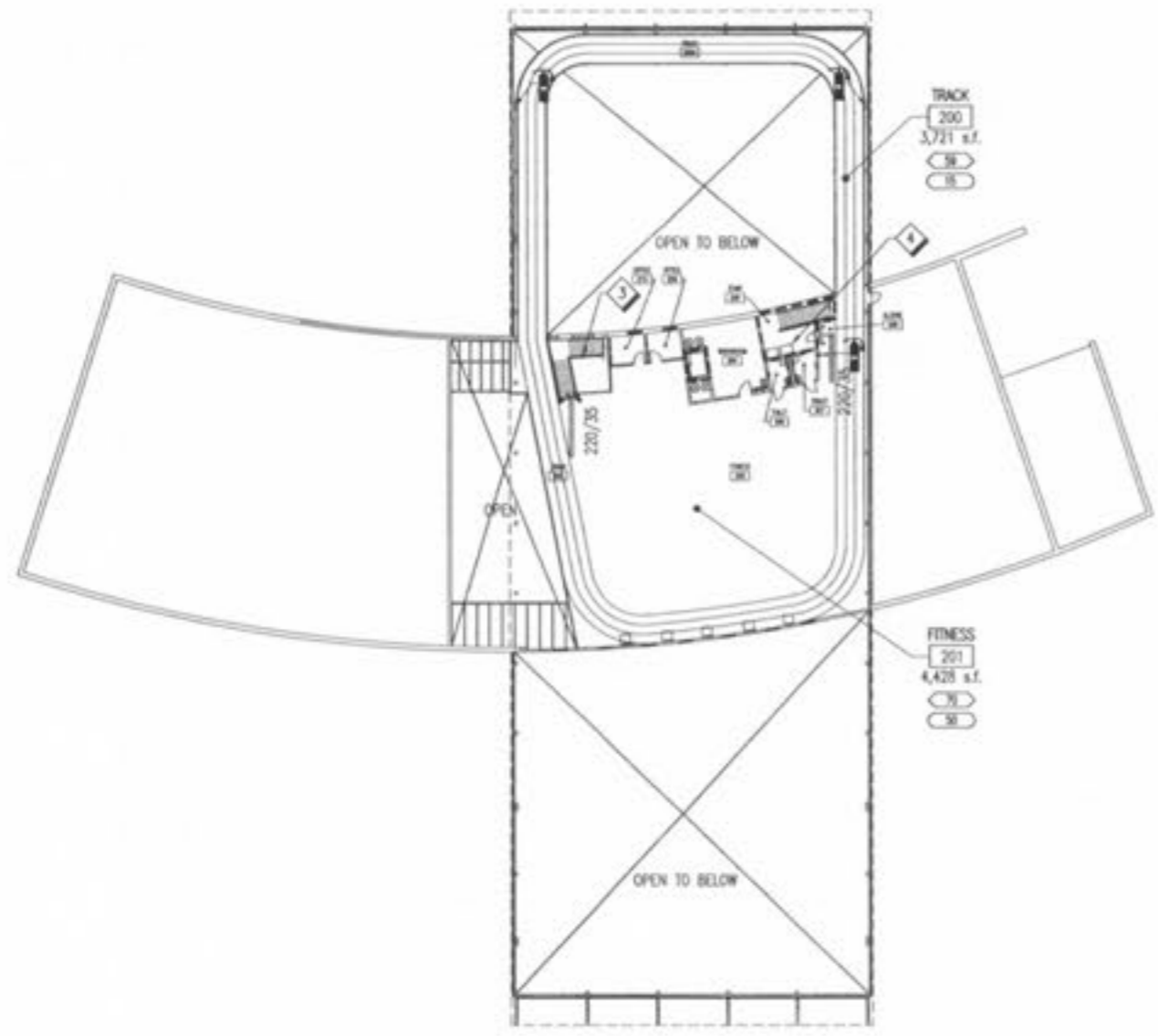
- MAXIMUM ALLOWABLE OCCUPANCY
- ACTUAL ANTICIPATED OCCUPANCY
- EXIT DOOR EGRESS CAPACITY/EGRESS LOAD
- 1 HOUR FIRE SEPARATION
- FIRE EXTINGUISHER LOCATION. LOCATION SHOWN ON LIFE SAFETY PLAN ARE APPROXIMATE. REFER TO FLOOR PLANS FOR EXACT LOCATION.
- WHEELCHAIR AREA OF REFUGE

GENERAL NOTES

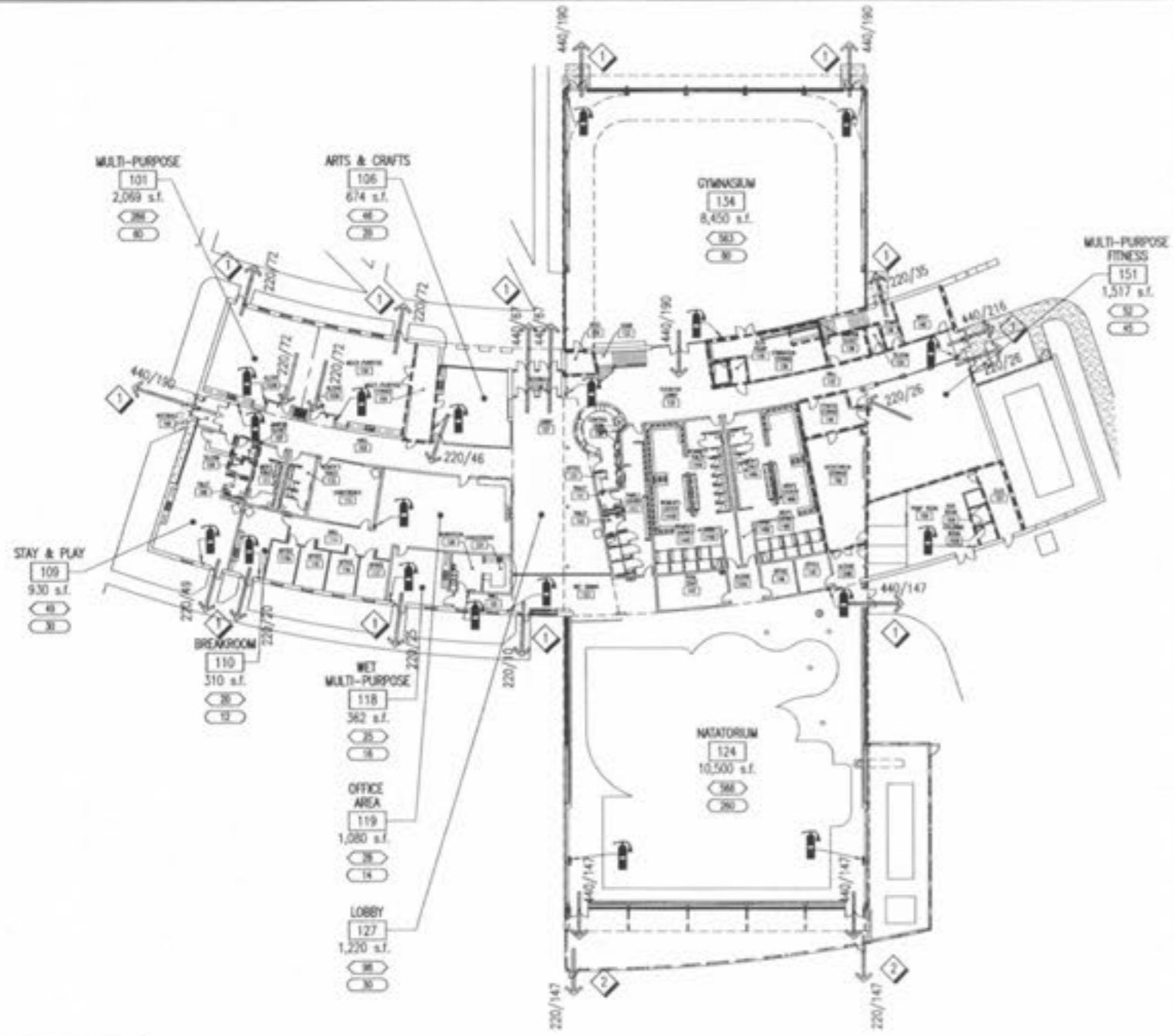
1. PROVIDE CONTINUOUS FIRE SAVING AT TOPS OF ALL RATED PARTITIONS COMPATIBLE WITH PARTITION SYSTEM AND ALLOWING FOR STRUCTURAL MOVEMENT.
2. PROVIDE THROUGH PENETRATION FIRE STOPPING SYSTEM AT ALL PENETRATIONS THROUGH RATED PARTITIONS AND WALLS. SYSTEMS SHALL BE COMPATIBLE WITH WALL CONSTRUCTION. EXCLUDE RATED DOORS.
3. REFER TO ELECTRICAL DRAWINGS FOR LOCATION OF FIRE ALARM STROBES/HORN, PULL STATIONS, EXIT SIGNAGE AND EMERGENCY LIGHTING.
4. SEE DRAWING A001 FOR CODE ANALYSIS.

KEYED NOTES

- EGRESS FROM EXIT DOOR IS TO A CONCRETE WALKWAY OR PAD LEADING AWAY FROM BUILDING - REFER TO ARCHITECTURAL AND CIVIL DRAWINGS
- EGRESS FROM EXIT DOOR ONTO CONCRETE PAVEMENT AND THROUGH A STEEL GATE WITH PANIC HORIZONTALS.
- OPEN STAIRWAY
- WHEELCHAIR AREA OF REFUGE IS PROVIDED.



C1 MEZZANINE FLOOR PLAN
 T = 25'-0"



A1 FIRST FLOOR PLAN
 T = 25'-0"

RENAUD SPIRIT CENTER
 For the City of O'Fallon - Missouri



Jacobs Project No: F3H4000
 Drawing Title: ARCHITECTURAL LIFE SAFETY PLANS
 Date: DECEMBER 9, 2002
 Designed By: T. SHERWOOD | Drawing No:
 Drawn By: M. MOSEY |
 Checked By: B. WISSEL | **A002**