

NOTES:

1. FOR SYMBOLS, ABBREVIATIONS AND GENERAL NOTES, SEE DRAWING FP001.

FIRE PROTECTION DESIGN CRITERIA

TOTAL AREA SHALL BE PROTECTED BY A WET-PIPE SPRINKLER SYSTEM. SYSTEM SHALL BE A WET-PIPE SYSTEM DESIGNED PER NFPA 13 REQUIREMENT LIGHT HAZARD OCCUPANCY, 0.10 GPM PER SQUARE FOOT OVER THE MOST REMOTE, 1500 SQUARE FEET, PLUS 100 GPM HOSE STREAM DEMAND AND 225 SQUARE FOOT PER HEAD SPACING, 1/2" ORIFICE AND 185 DEGREE HEAD.

NOTES:

1. ALL PIPING AND BRACING TO MEET ALL BUILDING CODE REQUIREMENTS.
2. CONTRACTOR SHALL COORDINATE EXACT LOCATION OF SPRINKLERS WITH DIFFUSERS, DUCTWORK, LIGHTS AND ALL OTHER TRACES.
3. REFER TO ARCH. REFLECTED CEILING PLANS.
4. SPRINKLER HEADS IN AREAS WITH CEILINGS SHALL BE CONCEALED AUTOMATIC SPRINKLERS.
5. SPRINKLER HEADS IN AREAS WITH NO CEILINGS SHALL BE BRONZE UPRIGHT OR PENDENT, AUTOMATIC SPRINKLERS. IN THE COMMONS SPRINKLER HEADS SHALL HAVE WIRE GUARDS.

Revision	Date	By	Description
1	12/9/02	F.P.	ISSUED FOR BD



12-12-02

RENAUD SPIRIT CENTER
For the City of O'Fallon - Missouri



Key Plan:



Scale:

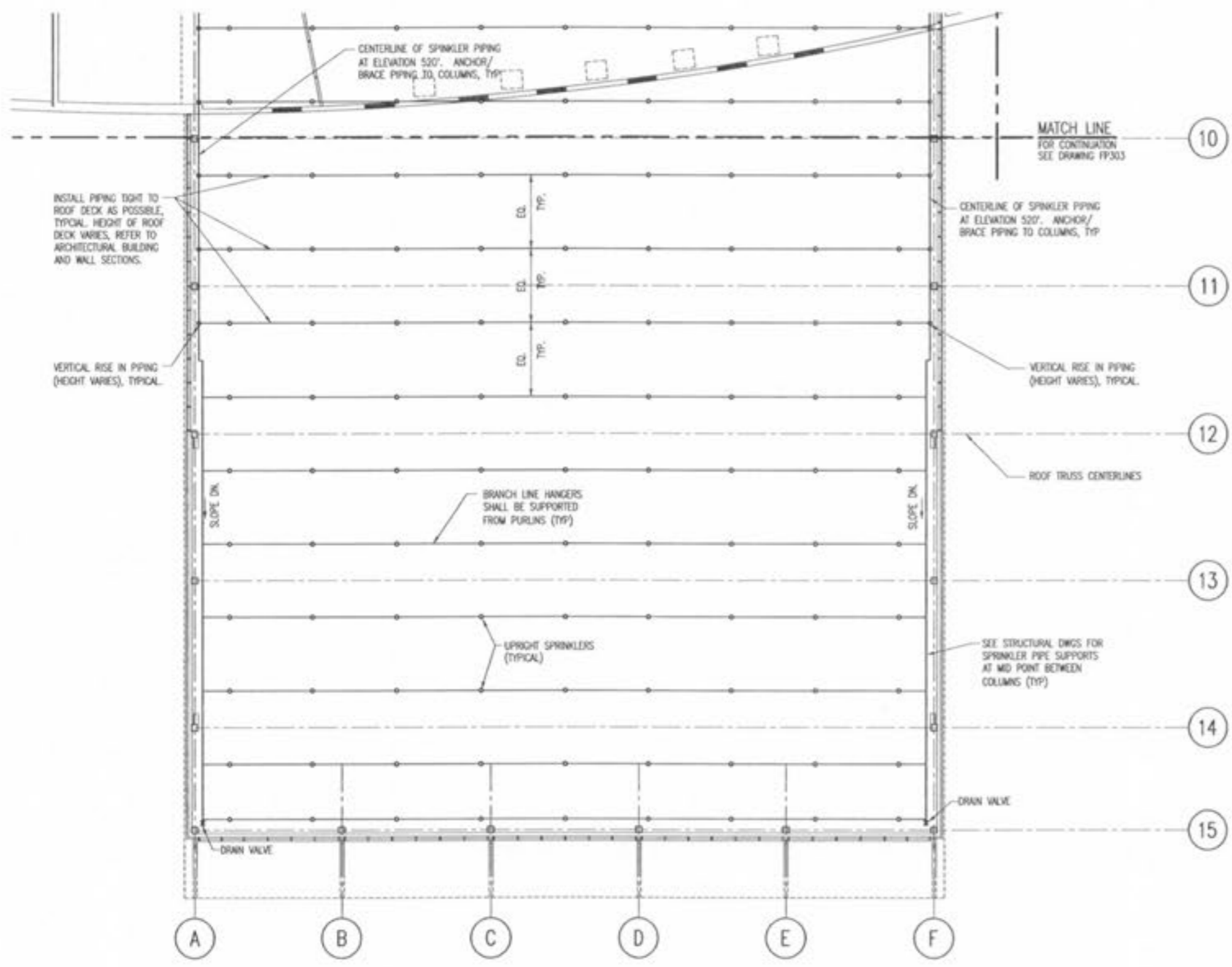


Jacobs Project No: F0440600

Drawing Title:
FIRE PROTECTION
MEZZANINE PLAN
SOUTH-EAST

Date: DECEMBER 8, 2002

Designed By: F.PANIEL
Drawn By: F.PANIEL
Checked By: LANGENFELD
Drawing No: FP304



A1 MEZZANINE PLAN SOUTH FIRE PROTECTION
1/8" = 1'-0"