

12.13.2002

RENAUD SPIRIT CENTER
 For the City of O'Fallon - Missouri



Key Plan



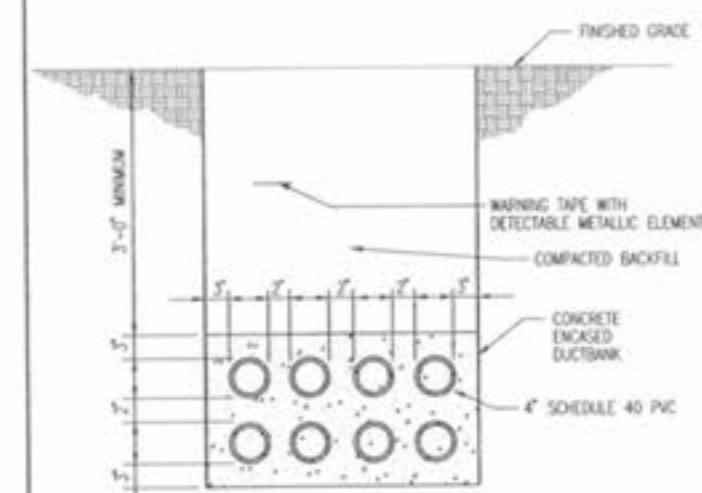
Jacobs Project No: F040000

Drawing Title:
ELECTRICAL ENLARGED EQUIPMENT ROOM PLANS

Date: DECEMBER 9, 2002
 Designed By: H. HODGSON | Drawing No:
 Drawn By: H. HODGSON | Checked By: F. HODGSON | **E601**

NOTES:

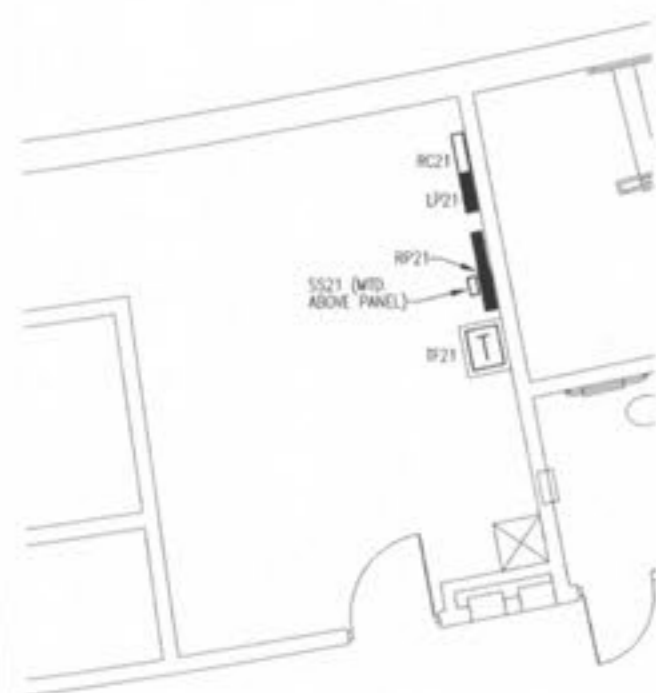
1. FOR SYMBOLS, ABBREVIATIONS AND GENERAL NOTES, SEE DRAWING E601.
2. #3/0 BARE GROUND (UNDER SLAB) TO GROUND BUS IN MDR1 (ELECTRICAL ROOM 153).
3. 200 PAIR CATEGORY 3 VOICE CABLE IN 2" PVC CONDUIT FROM TELCOM ROOM 105 TO TELCOM ROOM 154.
4. 4" PVC CONDUIT UNDER SLAB WITH (3) 1-1/4" INNERDUCTS FROM TELCOM ROOM 105 TO TELCOM ROOM 154.
5. #3/0 BARE GROUND IN CONDUIT UNDER SLAB TO TELCOM GROUND BUS (TGB) IN ROOM 105.
6. 2 - 2" SPARE PVC CONDUITS ROUTED UNDER SLAB FROM TELCOM ROOM 105 TO TELCOM ROOM 154, FOR FUTURE USE.
7. ALL EQUIPMENT ON THIS PLAN SHALL BE CIRCUITED TO PANEL "RP14", UNLESS OTHERWISE NOTED.
8. CONTRACTOR SHALL COORDINATE LOCATION AND ELECTRICAL REQUIREMENTS (AMPS, WIRE SIZE, BREAKER SIZE, ETC.) OF CONCESSION EQUIPMENT WITH EQUIPMENT SUPPLIER, PRIOR TO INSTALLATION OF ANY ELECTRICAL DEVICE IN CONCESSION AREA.



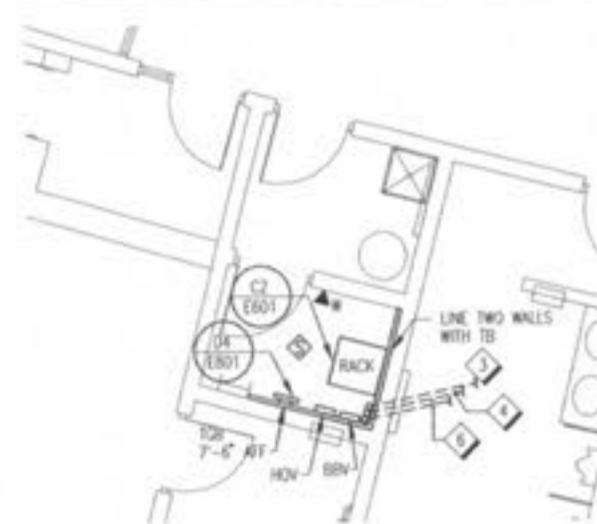
B5 DUCTBANK SECTION
 SCALE: NONE



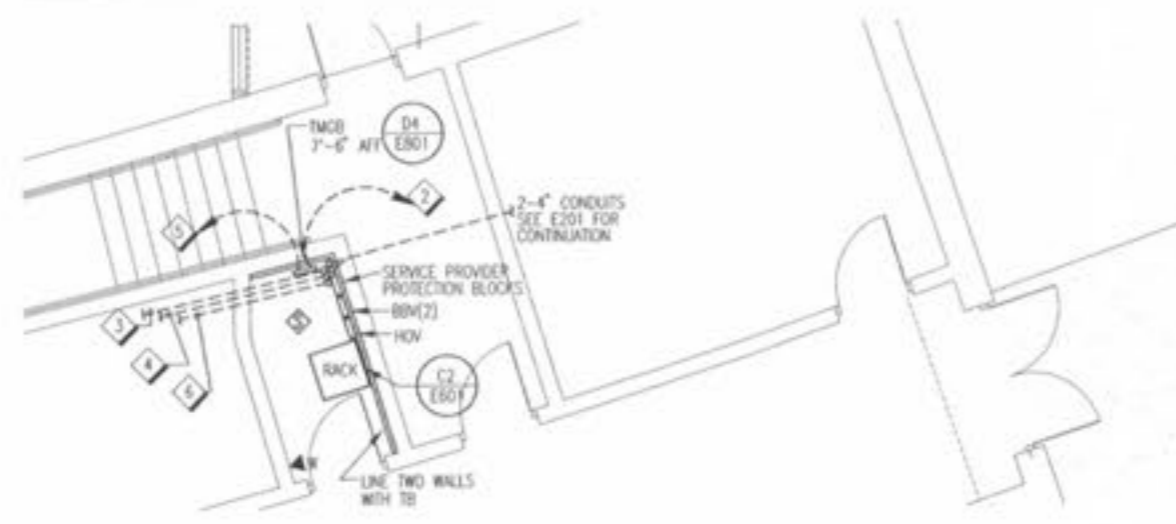
C2 RACK ELEVATION
 NO SCALE



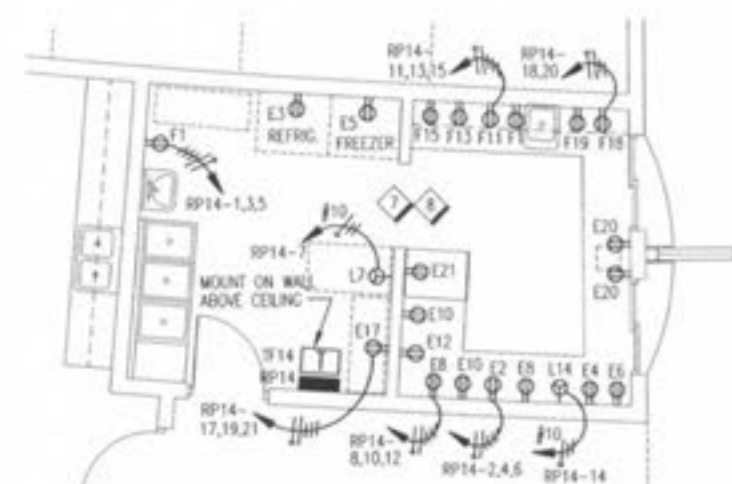
C1 WORKROOM 204
 SCALE: 1/4" = 1'-0"



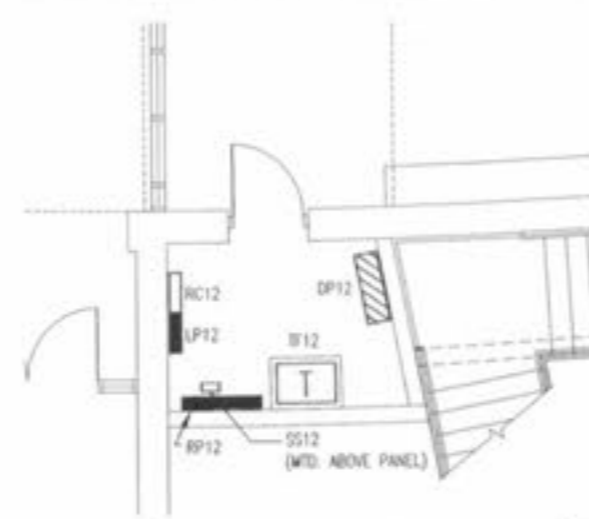
B1 TELCOM ROOM 105
 SCALE: 1/4" = 1'-0"



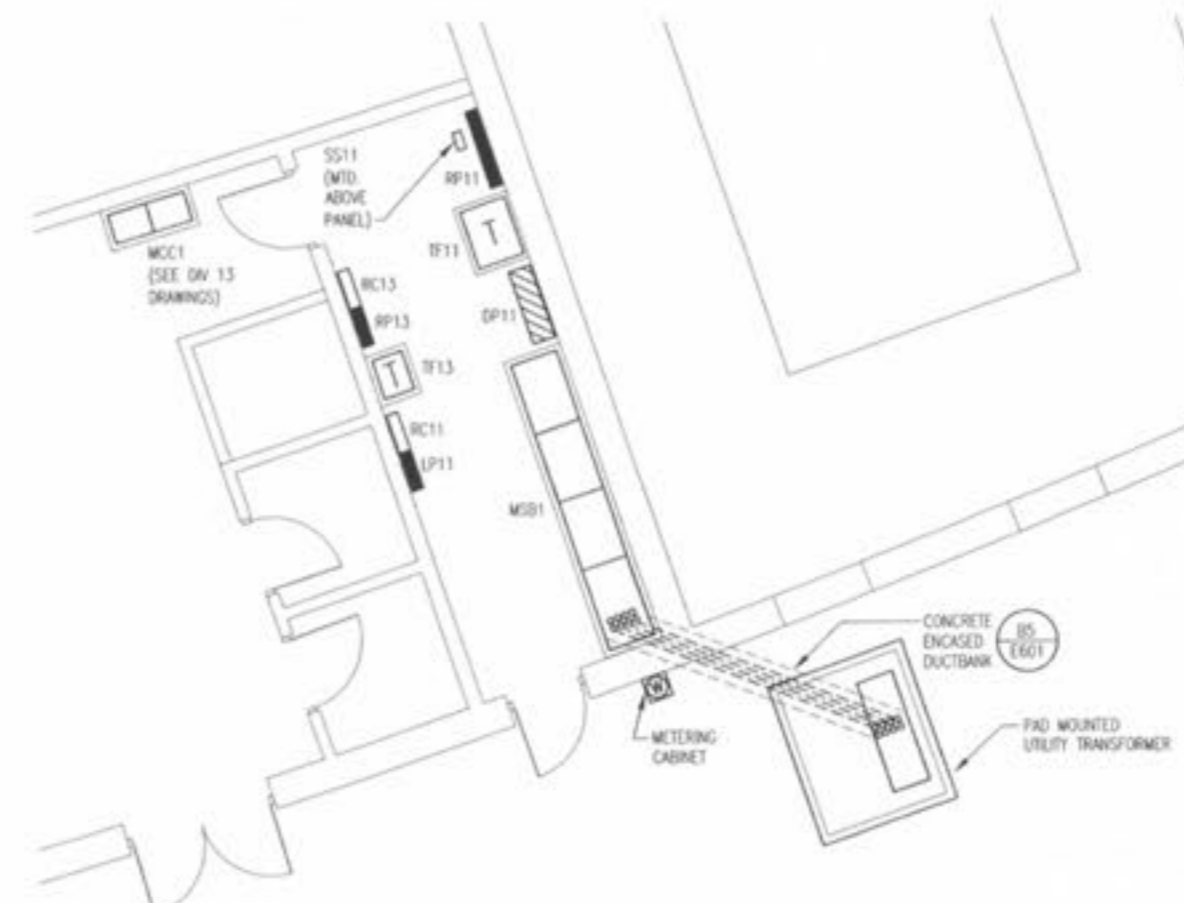
B2 TELCOM ROOM 154
 SCALE: 1/4" = 1'-0"



A1 CONCESSIONS 121
 SCALE: 1/4" = 1'-0"



A3 ELECTRICAL ROOM 129
 SCALE: 1/4" = 1'-0"



A4 ELECTRICAL ROOM 153
 SCALE: 1/4" = 1'-0"

