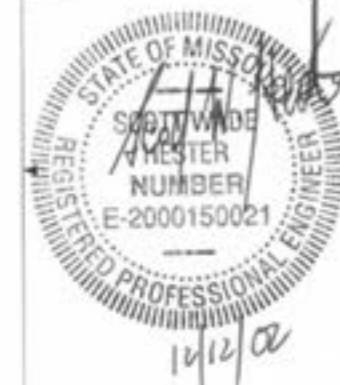




Revision
 Date: 12/9/02 By: Description: ISSUED FOR BID



RENAUD SPIRIT CENTER
 For the City of O'Fallon - Missouri



Key Plan

 Scale: AS NOTED

Jacobs Project No: F064000
 Drawing Title: LEISURE POOL SUCTION PIPING
 Date: DECEMBER 9, 2002
 Designed By: HES
 Drawn By: MVM/AM
 Checked By: SH
 Drawing No: **SP2.0**

PIPING NOTES
 (REFERS TO ALL PIPING)

1. ALL PIPING SHALL BE CONCRETE/STAINLESS STEEL.
2. COORDINATE ALL PIPING WITH PLUMBING, MECHANICAL AND ELECTRICAL.
3. ALL PIPING BELOW POOL FLOOR SHALL BE ENCASED IN CONCRETE.
4. COORDINATE ALL POOL PIPE ROOFING AND ELEVATIONS WITH ALL TRADES.
5. ALL ENCASED PIPING SHALL BE NORMAL PIPE DIMENSIONS, SCHEDULE 40 PIPING. ALL EXPOSED PIPING SHALL BE SCHEDULE 80 PIPING. ALL EXPOSED PIPING SHALL BE NORMAL PIPE DIMENSIONS, SCHEDULE 80 PIPING. VERIFY CHECKING INDICATES.
6. ALL ENCASED POOL PIPING MUST MEET ASTM D-1585 AND BE NSF APPROVED. SEE SPECIFICATIONS FOR MORE DETAIL.
7. ALL UNDERDECK ARE SHOWN TO AVOID FINISHED WALLS AND DO NOT TAKE INTO ACCOUNT FLOOR SLURRY.
8. INSTALL FLOW SENSORS AND/OR IMPACT FLOW METERS TO PIPE DIMENSIONS DOWNSTREAM AND 5 PIPE DIAMETERS UPSTREAM OF ANY FITTING.
9. THE CHEMICAL SENSOR LINE SHALL BE A 1/2" PIPING LINE EXTENDING FROM THE MET CELL SENSOR TO THE POOL'S RESPECTIVE FILL FUNNEL.

LEGEND

- ▲ WALL INLET
- FLOOR INLET
- MAN DRAIN BOX
- SHOWER
- BELOW GRADE PIPING
- ⊠ VALVE BOX

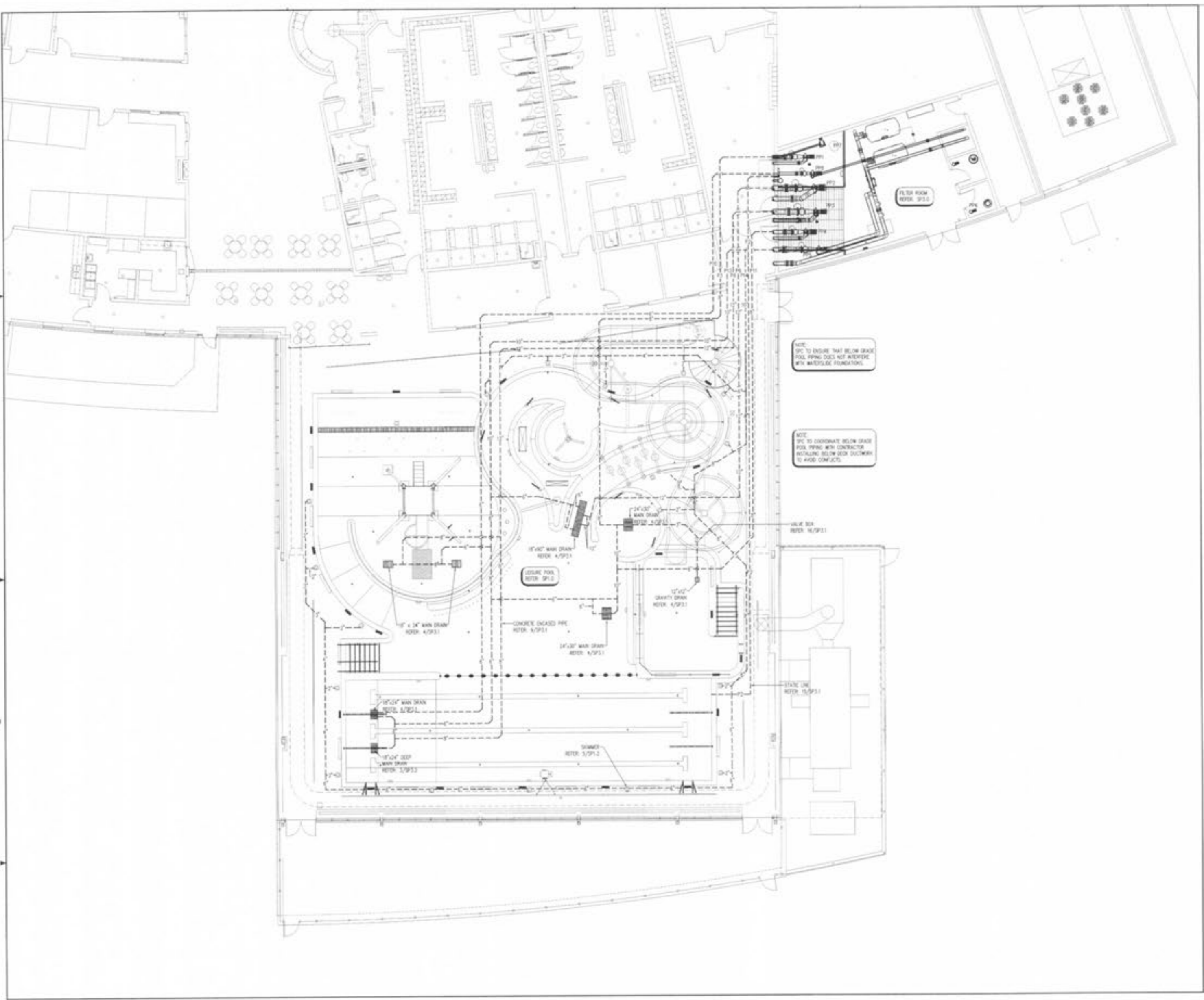
PUMP SCHEDULE

ID	DESCRIPTION	SPW	TDH	HP	SPECIFICATIONS
PP1	WORTH'S PUMP	600	40	10	
PP2	CURRENT RIVER PUMP	1750	40	25	
PP3	PLAY FEATURE PUMP	1000	40	20	
PP4	WATERLOO PUMP	800	40	15	
PP5	LEISURE POOL RECIRCULATION PUMP	1015	60	20	
PP6	CHILDREN BOILER PUMP	-	-	3.14	
PP7	UNDERWATER BENCH SUBMERSIBLE TO SUBMERSIBLE	2			
PP8	DRAIN DOWN PUMP	300	20	5	

* SUBMERSIBLE BENCH PUMP THAT IS NOT CONTROLLED FROM ELECTRICAL CONTROL PANEL MUST BE INTERLOCKED WITH POOL RECIRCULATION PUMPS, PP-8 & PP-7.

PIPING SCHEDULE

ID	DESCRIPTION	SPECIFICATIONS
P1	3" TO UNDERWATER BENCH SUBMERSIBLE	
P2	2" EXISTING LINE	
P3	4" FROM MAN DRAIN TO PP1	
P4	4" TO WORTH'S HEADS	
P5	4" FILL LINE	
P6	12" FROM MAN DRAIN TO PP2	
P7	12" TO CURRENT RIVER VALVE BOX	
P8	12" FROM MAN DRAIN TO PP3	
P9	4" TO PLAY FEATURE VALVE BOX #1	
P10	4" TO PLAY FEATURE VALVE BOX #2	
P11	4" FROM MAN DRAIN TO PP4	
P12	4" TO FILLING SLIDE	
P13	12" FROM MAN DRAIN TO PP5	
P14	12" FROM SWIMMERS TO PP5	
P15	4" TO POOL INLETS	
P16	4" FROM MAN DRAIN TO PP6	



1 SUCTION PIPING PLAN (RETURN)
 SP2.0 1/8" = 1'-0"