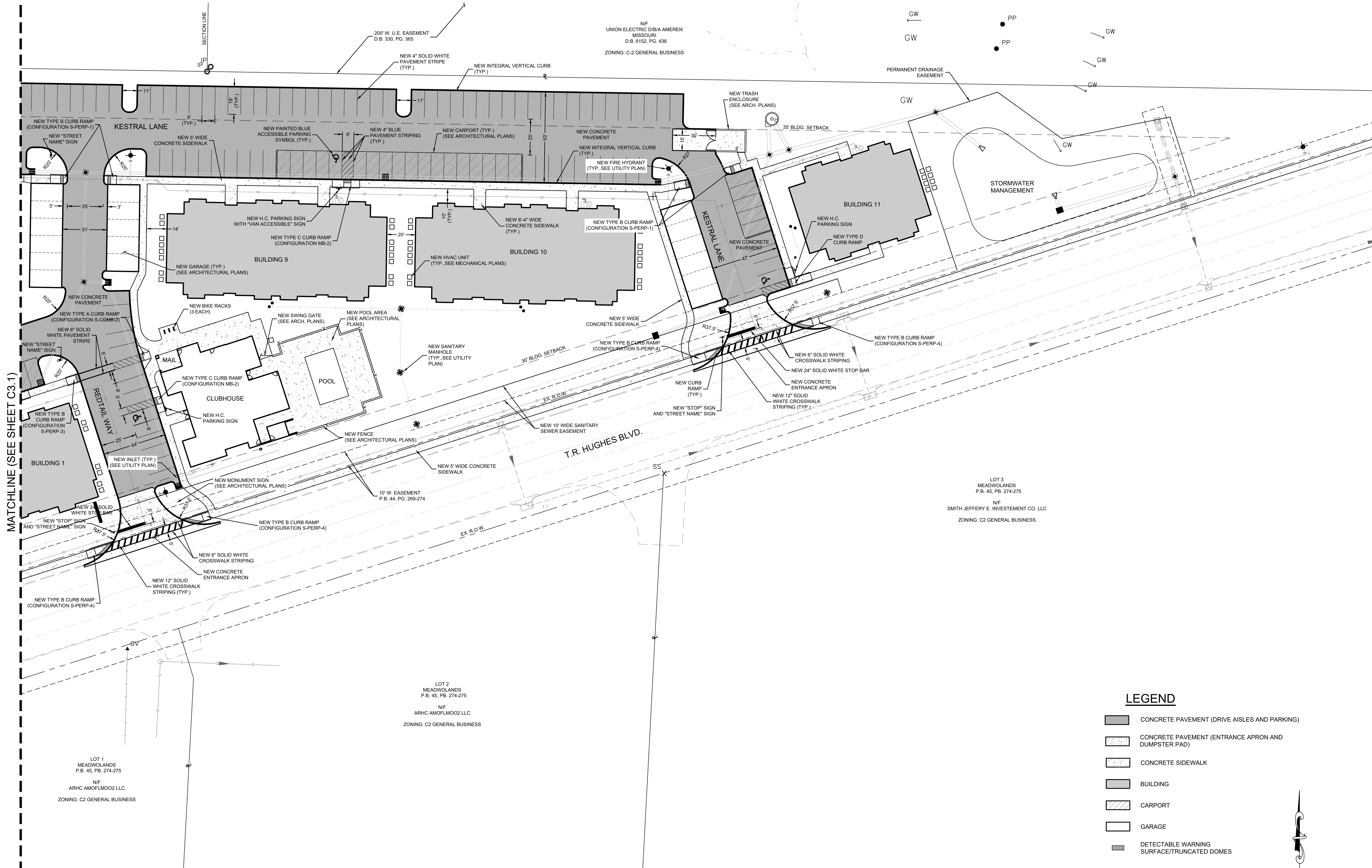


HORNER SHIFRIN
101 LAURA V DR. STE. 101 OF FALLON, MO 63366-2981
636-329-2296 • FAX 636-329-2910 • WWW.HORNERSHIFRIN.COM
DISCIPLINE: PROFESSIONAL ENGINEERING
CERTIFICATE OF AUTHORITY: 000769
EXPIRATION DATE: DECEMBER 31, 2018

STATE OF MISSOURI
APRIL GEISMANN
PROFESSIONAL ENGINEER
NUMBER E-2001004592
7/18/18
Name: April Geismann
Discipline: Civil Engineer
License No. E2001004592
Expiration Date: 12/31/2019



MATCHLINE (SEE SHEET C3.1)

OPERATOR: AMHARRISON
DWG: C:\pwworking\harrison\dwg\19759\Site Plan.dwg
CTB: Trans-std.ctb
PAGE SETUP NAME: ...
PLOT DATE: 6/24/2018 8:52:15 AM

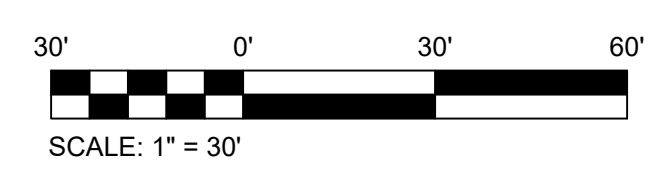
SPECIAL NOTE TO CONTRACTOR(S):
EXISTING UNDERGROUND AND ABOVE-GRADE FACILITIES, STRUCTURES, AND UTILITIES HAVE BEEN PLOTTED ON THESE CONTRACT DOCUMENTS BASED ON THE INFORMATION AND SURVEYS AVAILABLE AT THE TIME OF DRAWING PREPARATION. THE LOCATIONS OF THESE FEATURES MUST, THEREFORE, BE CONSIDERED APPROXIMATE, ONLY. IN ADDITION, THERE MAY BE OTHER FACILITIES, STRUCTURES, AND UTILITIES WHICH DID NOT EXIST (OR THE EXISTENCE OF WHICH WAS NOT KNOWN) AT THE TIME OF DRAWING PREPARATION. IT IS THE SOLE RESPONSIBILITY OF THE CONTRACTOR(S) TO HAVE ALL EXISTING FACILITIES, STRUCTURES, AND UTILITIES LOCATED IN THE FIELD PRIOR TO ANY EXCAVATION OR CONSTRUCTION ACTIVITY, AND TO PROTECT ALL SUCH EXISTING FEATURES (EXCEPT THOSE SPECIFICALLY NOTED FOR REMOVAL OR DEMOLITION) DURING CONSTRUCTION.

- NOTES:**
- EXISTING UTILITY LINES HAVE BEEN LOCATED FROM AVAILABLE INFORMATION AND SHOULD BE CONSIDERED APPROXIMATE. CONTRACTOR SHALL FIELD VERIFY ALL EXISTING UTILITY LOCATIONS AND DEPTHS.
 - ALL DIMENSIONS ARE TO FACE OF CURB UNLESS OTHERWISE NOTED.
 - SEE UTILITY PLAN FOR STORM SEWER, SANITARY SEWER, WATER, AND GAS LINES AND STRUCTURES.
 - SEE ELECTRICAL PLANS FOR NEW ELECTRIC LINES, LIGHT STANDARDS, ELECTRICAL STRUCTURES, ETC.

LEGEND

- CONCRETE PAVEMENT (DRIVE AISLES AND PARKING)
- CONCRETE PAVEMENT (ENTRANCE APRON AND DUMPSTER PAD)
- CONCRETE SIDEWALK
- BUILDING
- CARPORT
- GARAGE
- DETECTABLE WARNING SURFACE/TRUNCATED DOMES

Call Before you DIG
TOLL FREE
1-800-344-7483
MISSOURI ONE-CALL SYSTEM INC.
MODOT (314) 340-4100



RENEW O'FALLON
T.R. HUGHES BLVD
O'FALLON, MO 63366

SHEET TITLE SITE PLAN
PROJECT NUMBER: 17050
SHEET NUMBER:

C3.2

DRAWN BY: AMH CHECKED BY: AMG