

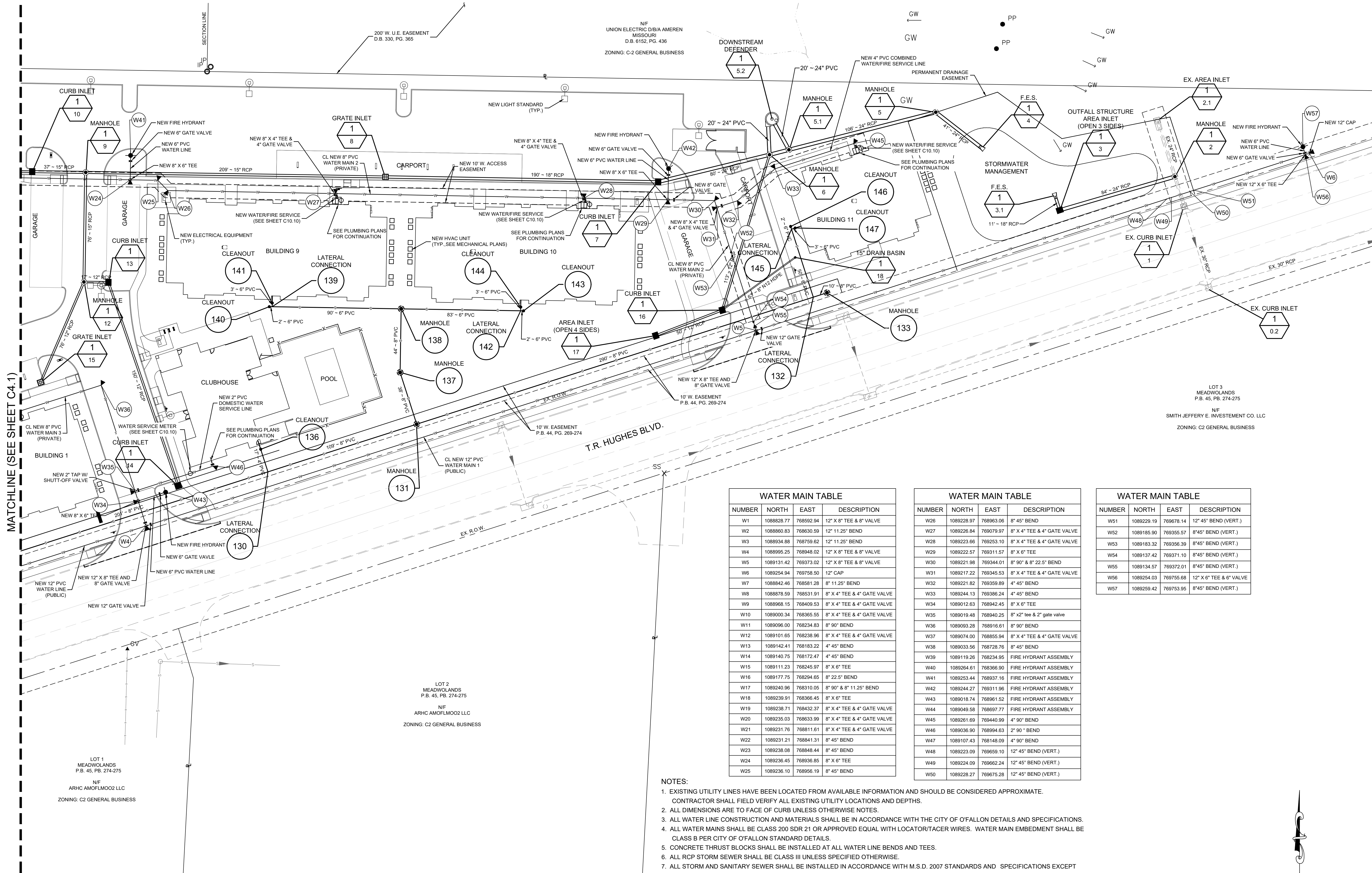
**HORNER SHIFRIN**  
101 LAURA K DR. STE. 101 OF FALLON, MO 63366-2091  
636-329-2936 • FAX 636-329-2910 • WWW.HORNERSHIFRIN.COM  
DISCIPLINE: PROFESSIONAL ENGINEERING  
CERTIFICATE OF AUTHORITY: 000769  
EXPIRATION DATE: DECEMBER 31, 2018

STATE OF MISSOURI  
APRIL GEISMAN  
PROFESSIONAL ENGINEER  
NUMBER E-2001004592  
7/18/18  
Name: April Geisman  
Discipline: Civil Engineer  
License No. E2001004592  
Expiration Date: 12/31/2019

**RENEW O'FALLON**  
T.R. HUGHES BLVD  
O'FALLON, MO 63366

SHEET TITLE UTILITY PLAN  
PROJECT NUMBER: 17050  
SHEET NUMBER:

**C4.2**  
DRAWN BY: AMH CHECKED BY: AMG



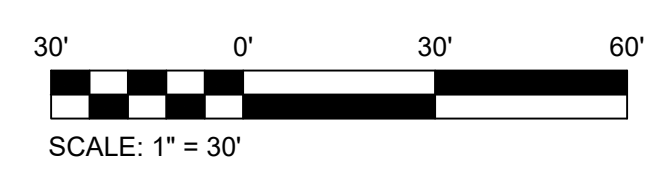
| WATER MAIN TABLE |            |           |                             |
|------------------|------------|-----------|-----------------------------|
| NUMBER           | NORTH      | EAST      | DESCRIPTION                 |
| W1               | 1088828.77 | 768592.94 | 12" X 8" TEE & 8" VALVE     |
| W2               | 1088960.83 | 768630.59 | 12" 11.25" BEND             |
| W3               | 1088934.88 | 768759.62 | 12" 11.25" BEND             |
| W4               | 1088995.25 | 768948.02 | 12" X 8" TEE & 8" VALVE     |
| W5               | 1089131.42 | 769373.02 | 12" X 8" TEE & 8" VALVE     |
| W6               | 1089254.94 | 769758.50 | 12" CAP                     |
| W7               | 1088842.46 | 768581.28 | 8" 11.25" BEND              |
| W8               | 1088878.59 | 768531.91 | 8" X 4" TEE & 4" GATE VALVE |
| W9               | 1088968.15 | 768409.53 | 8" X 4" TEE & 4" GATE VALVE |
| W10              | 1089000.34 | 768365.55 | 8" X 4" TEE & 4" GATE VALVE |
| W11              | 1089096.00 | 768234.83 | 8" 90° BEND                 |
| W12              | 1089101.65 | 768238.96 | 8" X 4" TEE & 4" GATE VALVE |
| W13              | 1089142.41 | 768183.22 | 4" 45° BEND                 |
| W14              | 1089140.75 | 768172.47 | 4" 45° BEND                 |
| W15              | 1089111.23 | 768245.97 | 8" X 6" TEE                 |
| W16              | 1089177.75 | 768294.65 | 8" 22.5° BEND               |
| W17              | 1089240.96 | 768310.05 | 8" 90° & 8" 11.25° BEND     |
| W18              | 1089239.91 | 768366.45 | 8" X 6" TEE                 |
| W19              | 1089238.71 | 768432.37 | 8" X 4" TEE & 4" GATE VALVE |
| W20              | 1089235.03 | 768633.99 | 8" X 4" TEE & 4" GATE VALVE |
| W21              | 1089231.76 | 768811.61 | 8" X 4" TEE & 4" GATE VALVE |
| W22              | 1089231.21 | 768841.31 | 8" 45° BEND                 |
| W23              | 1089238.08 | 768848.44 | 8" 45° BEND                 |
| W24              | 1089236.45 | 768936.85 | 8" X 6" TEE                 |
| W25              | 1089236.10 | 768956.19 | 8" 45° BEND                 |

| WATER MAIN TABLE |            |           |                             |
|------------------|------------|-----------|-----------------------------|
| NUMBER           | NORTH      | EAST      | DESCRIPTION                 |
| W26              | 1089228.97 | 768963.06 | 8" 45° BEND                 |
| W27              | 1089226.84 | 769079.97 | 8" X 4" TEE & 4" GATE VALVE |
| W28              | 1089223.66 | 769253.10 | 8" X 4" TEE & 4" GATE VALVE |
| W29              | 1089222.57 | 769311.57 | 8" X 6" TEE                 |
| W30              | 1089221.98 | 769344.01 | 8" 90° & 8" 22.5° BEND      |
| W31              | 1089217.22 | 769345.53 | 8" X 4" TEE & 4" GATE VALVE |
| W32              | 1089221.82 | 769359.89 | 4" 45° BEND                 |
| W33              | 1089244.13 | 769386.24 | 4" 45° BEND                 |
| W34              | 1089012.63 | 768942.45 | 8" X 6" TEE                 |
| W35              | 1089019.48 | 768940.25 | 8" x2" tee & 2" gate valve  |
| W36              | 1089093.28 | 768916.61 | 8" 90° BEND                 |
| W37              | 1089074.00 | 768855.94 | 8" X 4" TEE & 4" GATE VALVE |
| W38              | 1089033.56 | 768728.76 | 8" 45° BEND                 |
| W39              | 1089119.26 | 768234.95 | FIRE HYDRANT ASSEMBLY       |
| W40              | 1089264.61 | 768366.90 | FIRE HYDRANT ASSEMBLY       |
| W41              | 1089253.44 | 768937.16 | FIRE HYDRANT ASSEMBLY       |
| W42              | 1089244.27 | 769311.96 | FIRE HYDRANT ASSEMBLY       |
| W43              | 1089018.74 | 768961.52 | FIRE HYDRANT ASSEMBLY       |
| W44              | 1089049.58 | 768697.77 | FIRE HYDRANT ASSEMBLY       |
| W45              | 1089261.69 | 769440.99 | 4" 90° BEND                 |
| W46              | 1089036.90 | 768994.63 | 2" 90° BEND                 |
| W47              | 1089107.43 | 768148.09 | 4" 90° BEND                 |
| W48              | 1089223.09 | 769669.10 | 12" 45° BEND (VERT.)        |
| W49              | 1089224.09 | 769662.24 | 12" 45° BEND (VERT.)        |
| W50              | 1089228.27 | 769675.28 | 12" 45° BEND (VERT.)        |

| WATER MAIN TABLE |            |           |                         |
|------------------|------------|-----------|-------------------------|
| NUMBER           | NORTH      | EAST      | DESCRIPTION             |
| W51              | 1089229.19 | 768978.14 | 12" 45° BEND (VERT.)    |
| W52              | 1089185.90 | 769355.57 | 8" 45° BEND (VERT.)     |
| W53              | 1089183.32 | 769356.39 | 8" 45° BEND (VERT.)     |
| W54              | 1089137.42 | 769371.10 | 8" 45° BEND (VERT.)     |
| W55              | 1089134.57 | 769372.01 | 8" 45° BEND (VERT.)     |
| W56              | 1089254.03 | 768755.68 | 12" X 6" TEE & 6" VALVE |
| W57              | 1089259.42 | 768753.95 | 8" 45° BEND (VERT.)     |

- NOTES:
- EXISTING UTILITY LINES HAVE BEEN LOCATED FROM AVAILABLE INFORMATION AND SHOULD BE CONSIDERED APPROXIMATE. CONTRACTOR SHALL FIELD VERIFY ALL EXISTING UTILITY LOCATIONS AND DEPTHS.
  - ALL DIMENSIONS ARE TO FACE OF CURB UNLESS OTHERWISE NOTES.
  - ALL WATER LINE CONSTRUCTION AND MATERIALS SHALL BE IN ACCORDANCE WITH THE CITY OF O'FALLON DETAILS AND SPECIFICATIONS.
  - ALL WATER MAINS SHALL BE CLASS 200 SDR 21 OR APPROVED EQUAL WITH LOCATOR/TACER WIRES. WATER MAIN EMBEDMENT SHALL BE CLASS B PER CITY OF O'FALLON STANDARD DETAILS.
  - CONCRETE THRUST BLOCKS SHALL BE INSTALLED AT ALL WATER LINE BENDS AND TEES.
  - ALL RCP STORM SEWER SHALL BE CLASS III UNLESS SPECIFIED OTHERWISE.
  - ALL STORM AND SANITARY SEWER SHALL BE INSTALLED IN ACCORDANCE WITH M.S.D. 2007 STANDARDS AND SPECIFICATIONS EXCEPT AS MODIFIED BY THE CITY OF O'FALLON ORDINANCES.
  - ALL SANITARY SEWER SHALL BE SDR35 OR APPROVED EQUAL.
  - ALL SANITARY SEWER LATERALS SHALL BE A MINIMUM OF 6" SCHEDULE 40 PVC PIPE.
  - SEE ELECTRICAL PLANS FOR NEW ELECTRIC LINES, LIGHT STANDARDS, ELECTRICAL STRUCTURES, ETC.
  - SEE PLUMBING PLANS FOR WATER LINE AND SANITARY SEWER LATERAL CONNECTIONS TO NEW BUILDINGS.
  - TO PREVENT SEDIMENT FROM CLOGGING THE BMP, CONSTRUCTION SITE RUNOFF SHALL NOT FLOW INTO BMP AREAS. ALL STORMWATER FLOW TO BMP AREAS SHALL BE DIVERTED, PLUGGED, OR DISCONNECTED UNTIL THE CONSTRUCTION SITE IS STABLE AND THE INSPECTOR PROVIDES APPROVAL TO PLACE THE BMP ON-LINE.
  - 15" DRAIN BASIN TO BE NYLOPLAST 15" INLINE DRAIN WITH 15" STANDARD GRATE.

Call Before you DIG  
TOLL FREE  
1-800-344-7483  
MISSOURI ONE-CALL SYSTEM INC.  
MODOT (314) 340-4100



**SPECIAL NOTE TO CONTRACTOR(S):**  
EXISTING UNDERGROUND AND ABOVE-GRADE FACILITIES, STRUCTURES, AND UTILITIES HAVE BEEN PLOTTED ON THESE CONTRACT DOCUMENTS BASED ON THE INFORMATION AND SURVEYS AVAILABLE AT THE TIME OF DRAWING PREPARATION. THE LOCATIONS OF THESE FEATURES MUST, THEREFORE, BE CONSIDERED APPROXIMATE, ONLY. IN ADDITION, THERE MAY BE OTHER FACILITIES, STRUCTURES, AND UTILITIES WHICH DID NOT EXIST (OR THE EXISTENCE OF WHICH WAS NOT KNOWN) AT THE TIME OF DRAWING PREPARATION. IT IS THE SOLE RESPONSIBILITY OF THE CONTRACTOR(S) TO HAVE ALL EXISTING FACILITIES, STRUCTURES, AND UTILITIES LOCATED IN THE FIELD PRIOR TO ANY EXCAVATION OR CONSTRUCTION ACTIVITY, AND TO PROTECT ALL SUCH EXISTING FEATURES (EXCEPT THOSE SPECIFICALLY NOTED FOR REMOVAL OR DEMOLITION) DURING CONSTRUCTION.

LOT 1 MEADOWLANDS P.B. 45, PB. 274-275  
NIF ARHC AMOFMOO2 LLC  
ZONING: C2 GENERAL BUSINESS

LOT 2 MEADOWLANDS P.B. 45, PB. 274-275  
NIF ARHC AMOFMOO2 LLC  
ZONING: C2 GENERAL BUSINESS

LOT 3 MEADOWLANDS P.B. 45, PB. 274-275  
NIF SMITH JEFFERY E. INVESTMENT CO. LLC  
ZONING: C2 GENERAL BUSINESS

MATCHLINE (SEE SHEET C4.1)

OPERATOR: AMHARRISON

DWG: C:\pwworking\aharrison\esdms19759\Utility Plan.dwg  
CTR: Trans-stk.ch  
PLOT DATE: 6/24/2018 11:56 PM  
SAVE DATE: 6/14/2018 10:27:16 AM