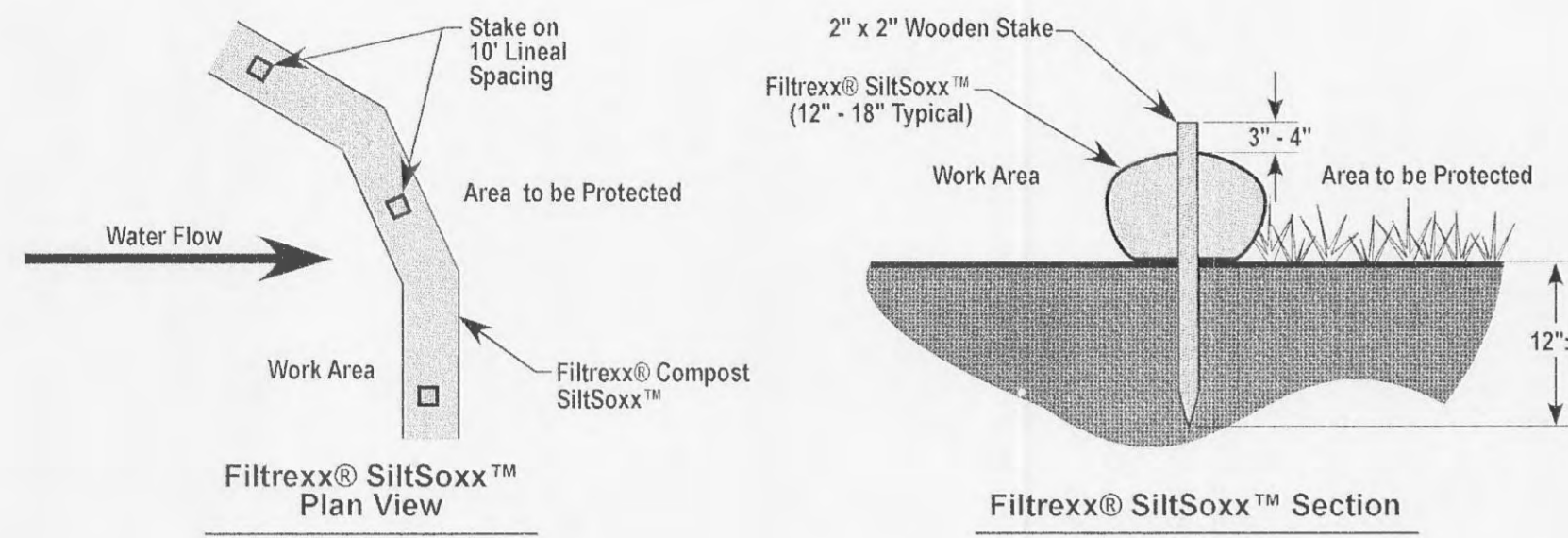
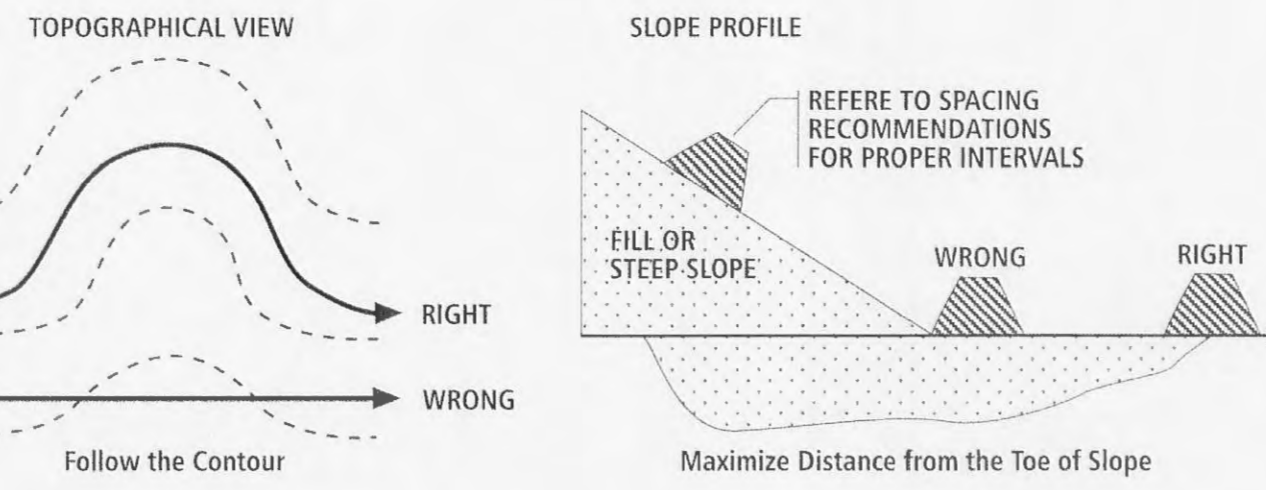


Filtrex® SiltSoxx™ Details

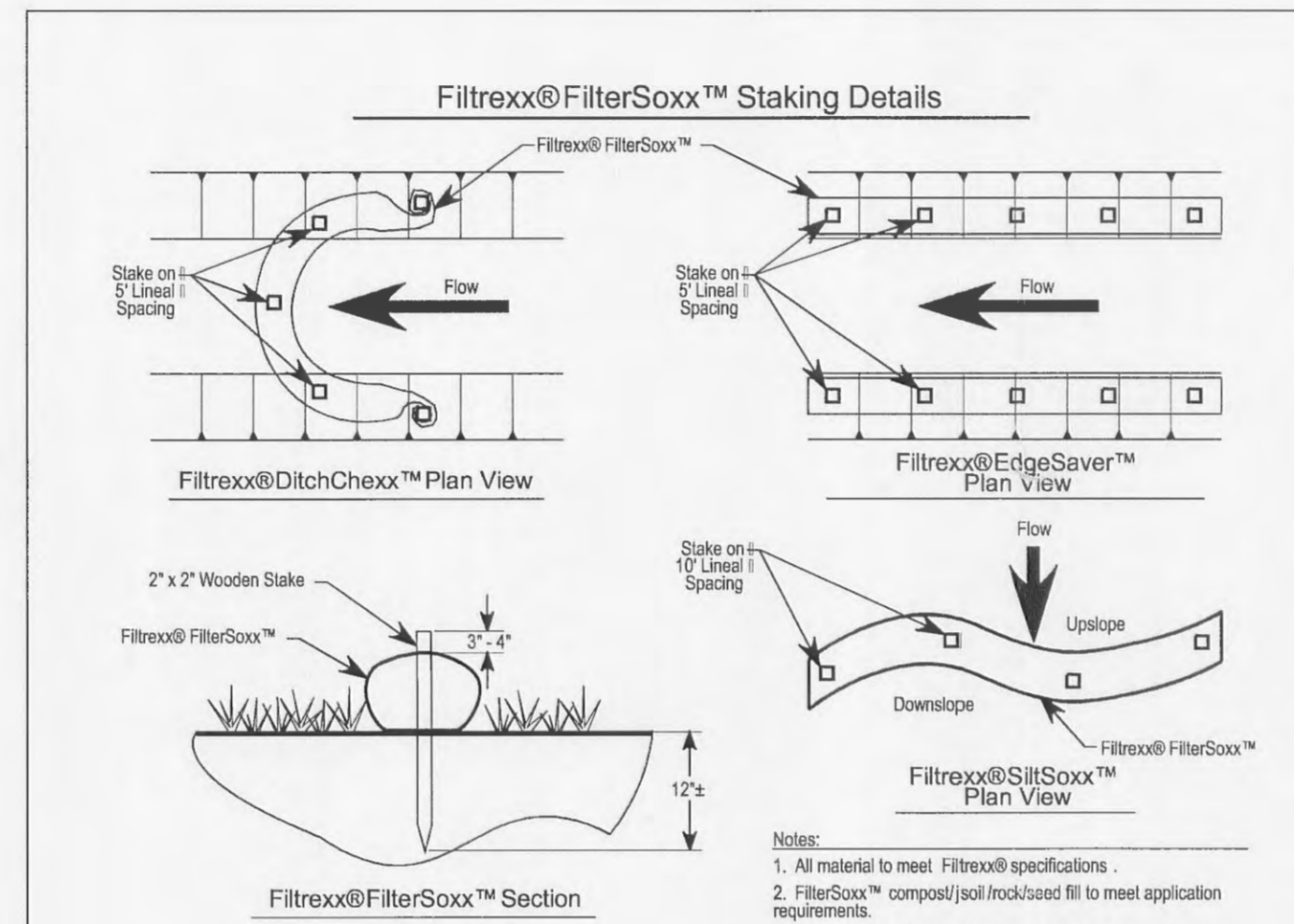


- NOTES:**
1. All material to meet Filtrex® specifications.
 2. SiltSoxx™ compost/soil/rock/seed fill to meet application requirements.
 3. SiltSoxx™ depicted is for minimum slopes. Greater slopes may require larger socks per the Engineer.
 4. Compost material to be dispersed on site, as determined by Engineer.

14

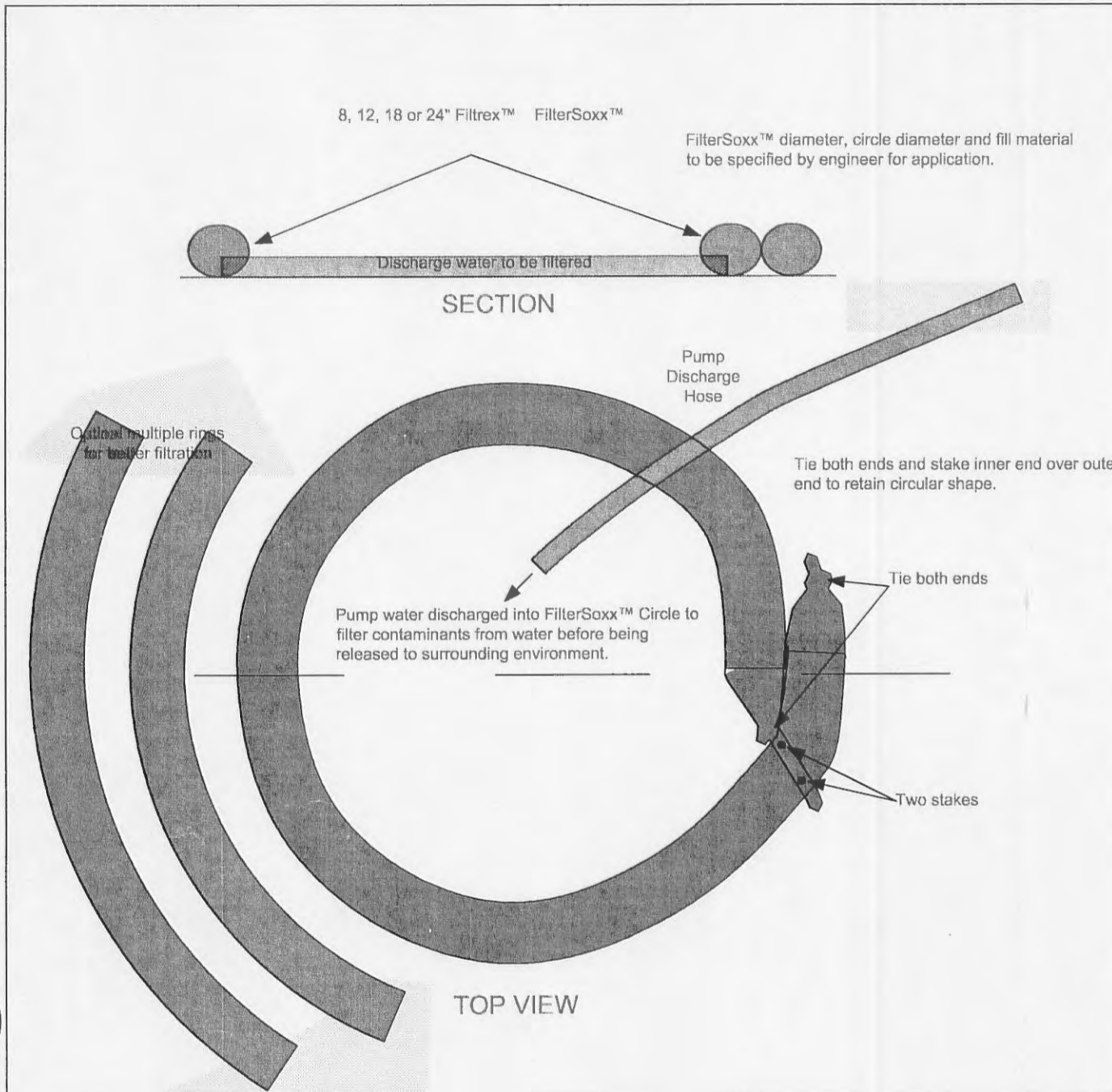


17



- NOTES:**
1. All material to meet Filtrex® specifications.
 2. FilterSoxx™ compost/soil/rock/seed fill to meet application requirements.
 3. Compost material to be dispersed on site, as determined by Engineer.

18



NOTES:

1. All material to meet Filtrex® specifications.
2. This connector shall maintain the Filtrex® in functional position at all time and shall be readily replaced.

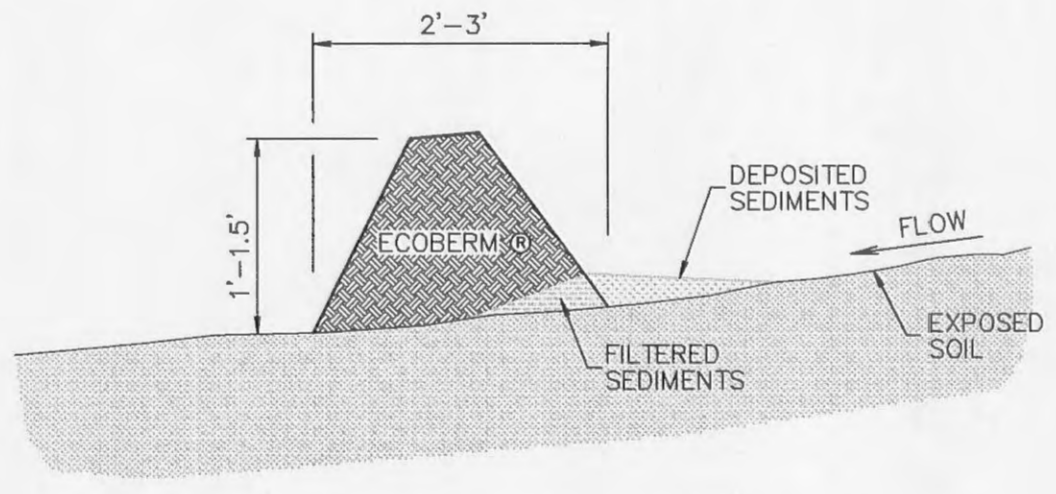
Filtrex™ International
 26481 GARDEN EASTERN RD
 OXFORD, OH 45056
 614-834-8244
 443-828-8041

Filtrex™ Filter Circle

DESIGN	K.A.S.	SCALE	NTS
DRAWN	R.T.	DATE	K.A.R.
SHEET	1 of 1	PROJECT	
DATE			CF1

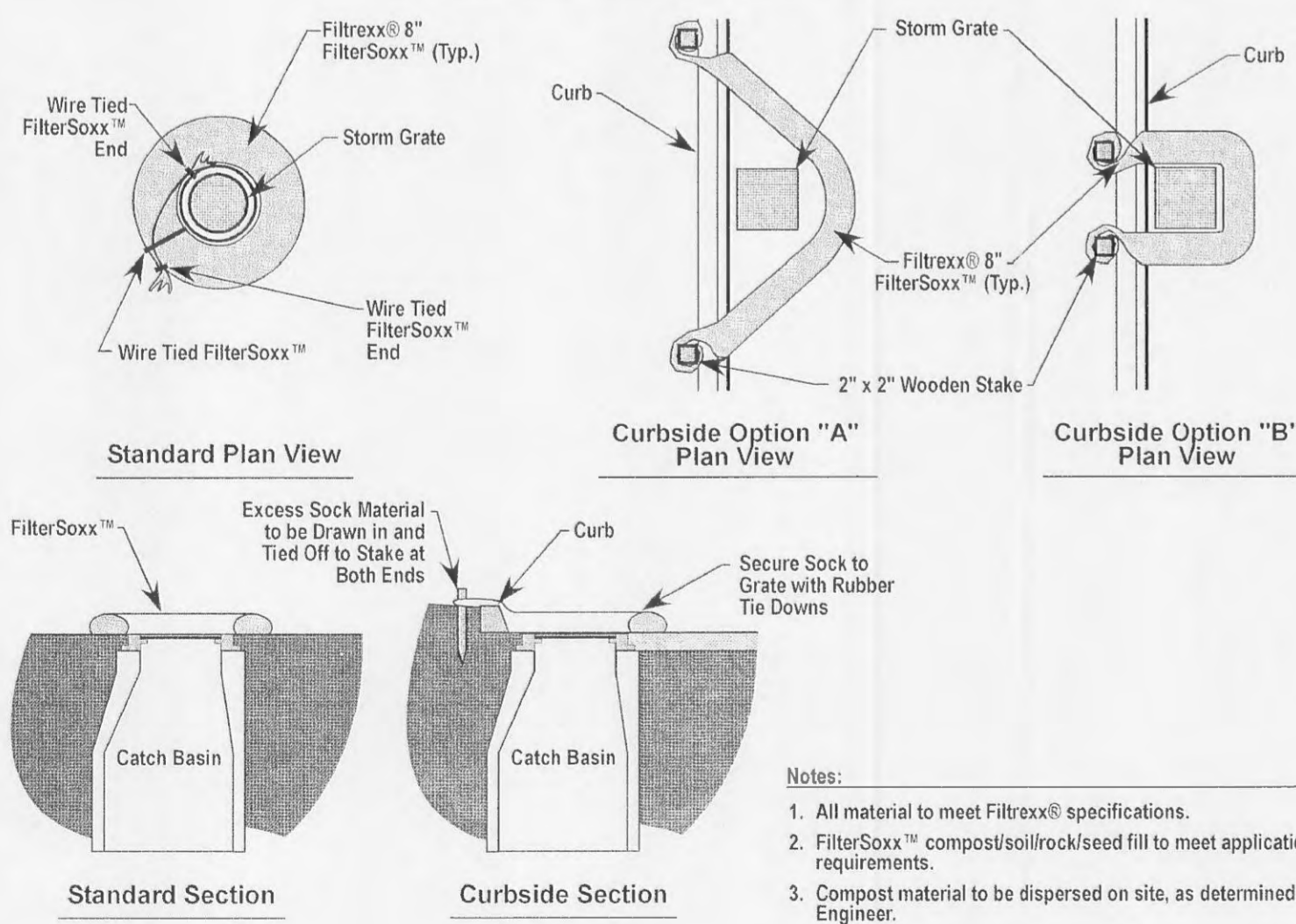
15

- INSTALLATION NOTES:**
1. ECOBERM SHALL BE INSTALLED BY A REXIUS CERTIFIED INSTALLER AND CONSTRUCTED USING FILTERING MATERIAL MEETING THE REXIUS SPECIFICATIONS FOR PARTICLE SIZE AND COMPOST QUALITY.
 2. ECOBERM SHOULD BE PLACED ALONG A LEVEL CONTOUR SO THAT IT WILL NOT CHANNEL RUNOFF AND CREATE CONCENTRATED FLOWS.



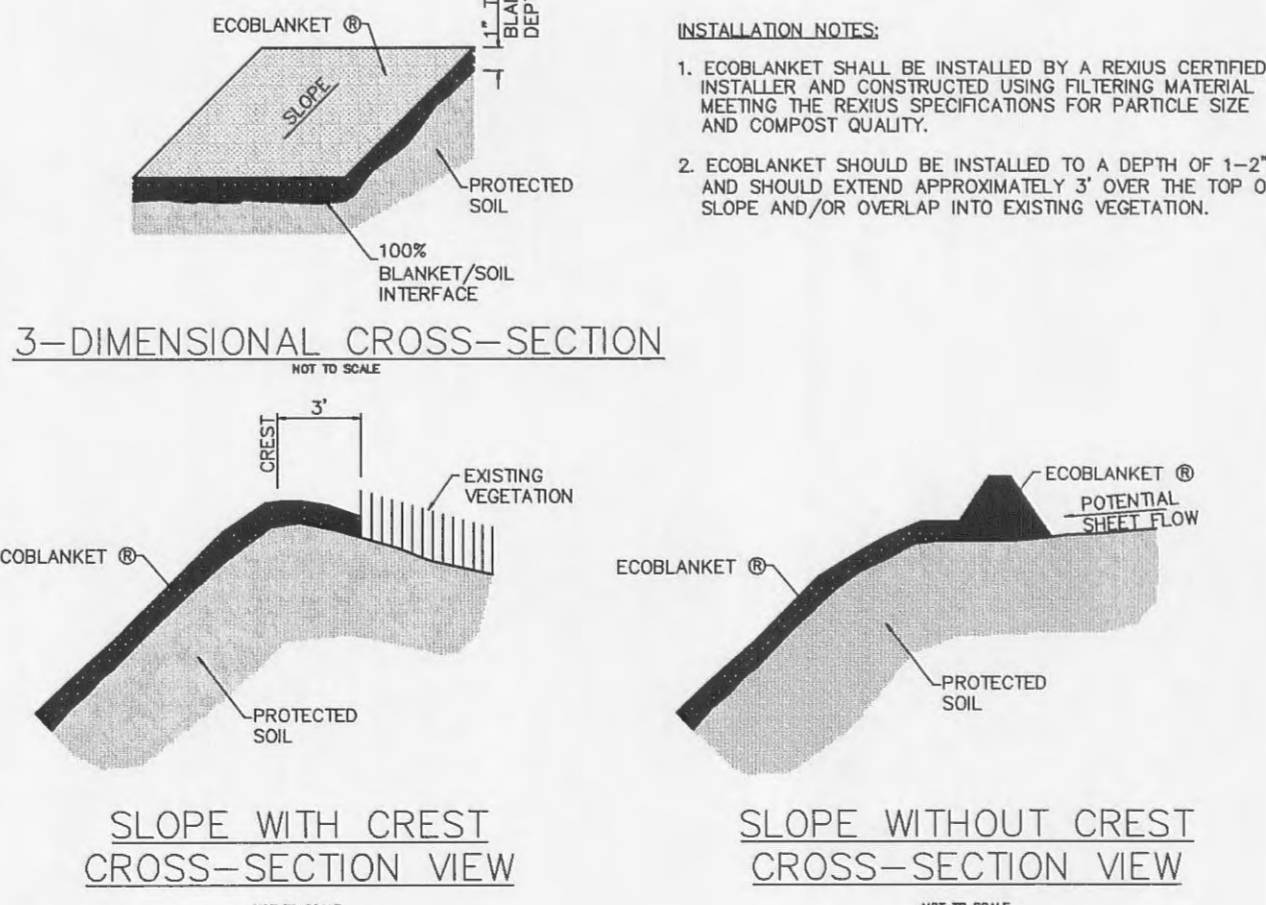
19

Filtrex® Inlet Protection Details



- NOTES:**
1. All material to meet Filtrex® specifications.
 2. FilterSoxx™ compost/soil/rock/seed fill to meet application requirements.
 3. Compost material to be dispersed on site, as determined by Engineer.

16



- INSTALLATION NOTES:**
1. ECOBLANKET SHALL BE INSTALLED BY A REXIUS CERTIFIED INSTALLER AND CONSTRUCTED USING FILTERING MATERIAL MEETING THE REXIUS SPECIFICATIONS FOR PARTICLE SIZE AND COMPOST QUALITY.
 2. ECOBLANKET SHOULD BE INSTALLED TO A DEPTH OF 1-2\"/>

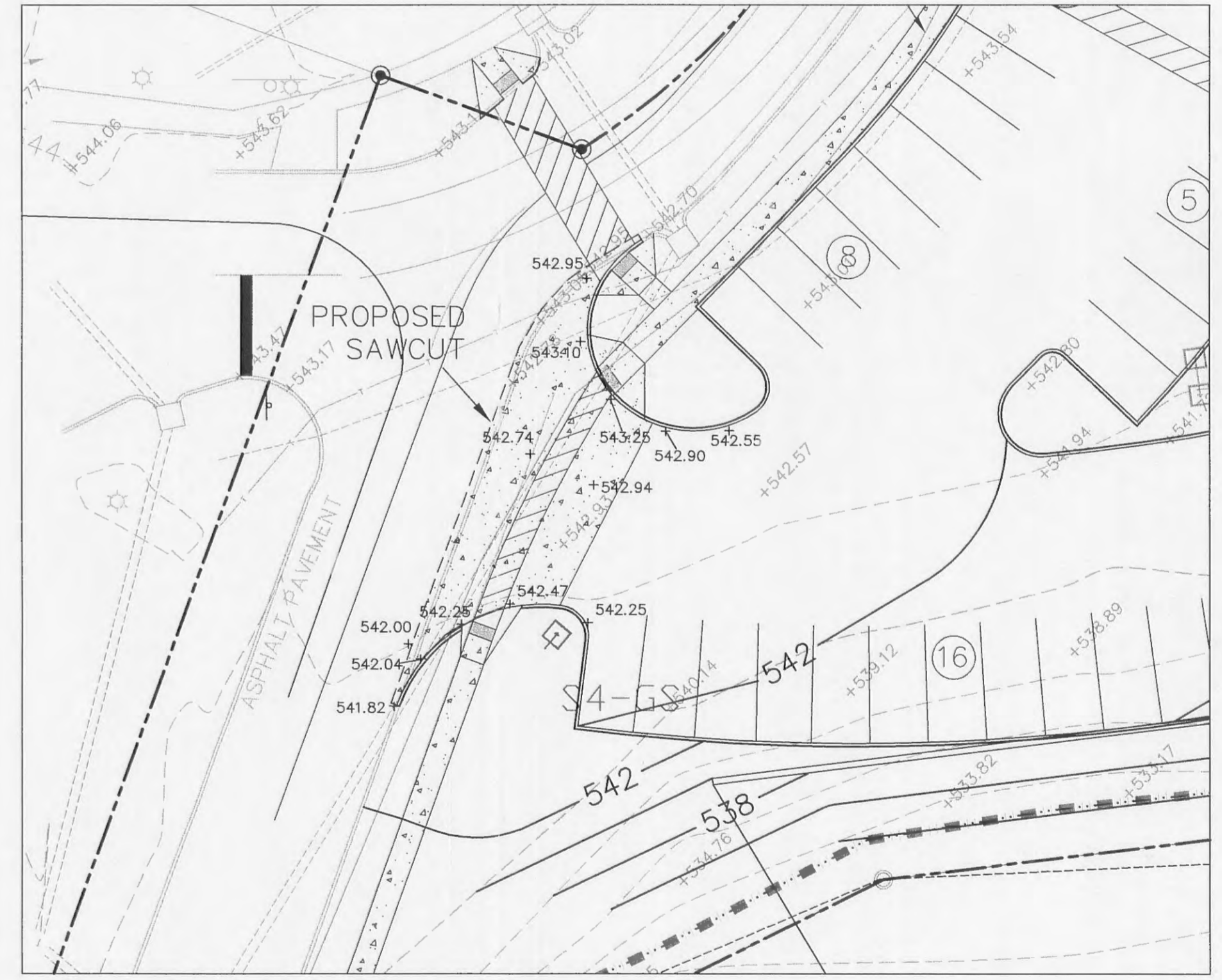
20



NORTH ENTRANCE WARPING DETAIL

SCALE: 1"=20'

EXISTING PAVEMENT TO BE REMOVED TO THE NEAREST JOINT.



SOUTH ENTRANCE WARPING DETAIL

SCALE: 1"=20'

- △ 06-20-06 REVISED PER CITY COMMENTS DATED 6-13-2006
- △ 05-31-06 REVISED PER CITY COMMENTS DATED 5-12-2006
- △ 05-05-06 WATER LINE CHANGED FROM 4" TO 3"
- △ 04-26-06 REVISED PER CITY COMMENTS
- △ 02-28-06 REVISED WALL PROFILE A, ADDED COTTLEVILLE FIRE NOTES ON SHEET C2
- △ 02-13-06 IN-HOUSE
- △ 01-09-06 REVISED PER ARCHITECTURAL FOOTPRINT AND FIRE DEPT. COMMENTS

EROSION CONTROL DETAILS

RESIDENCE INN – PROGRESS POINT VILLAGE

STOCK & ASSOCIATES
Consulting Engineers, Inc.

257 Chesterfield Business Parkway
 St. Louis, MO 63005
 PH. (636) 530-9100
 FAX (636) 530-9130
 e-mail: general@stockassoc.com
 Web: www.stockassoc.com

P&Z NOS: 99-104.12
 APPROVED ON 12/15/05

06-20-06

DATE: 1/13/06
 CHECKED BY: G.M.S.
 JOB NUMBER: 205-3718
 SHEET: C12 of 12

DETAILS COURTESY OF:
FILTREXX
 6 SILVER LEAF COURT
 LAKE ST. LOUIS, MO. 63367
 ATTN: Rob Carrothers & Shawn Garland
 TEL: 636-561-3158
 FAX: 636-561-3159
 soil@tekma@centurytel.net