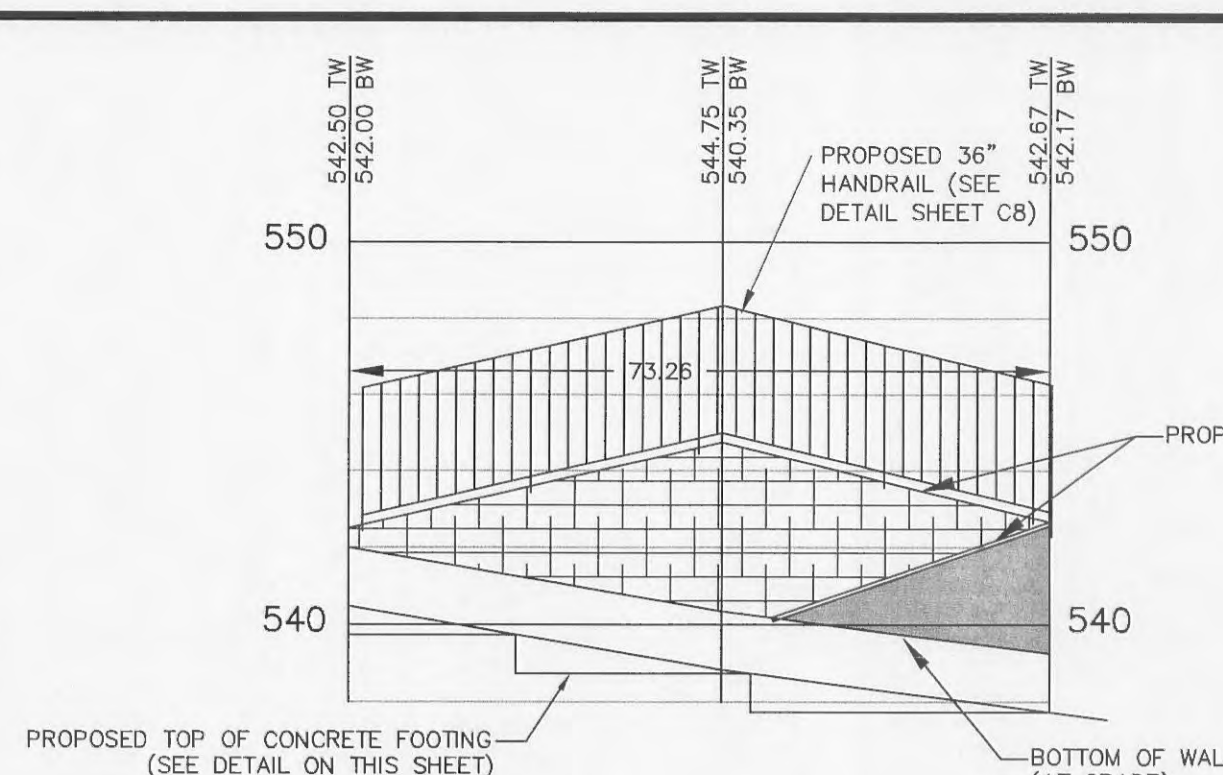
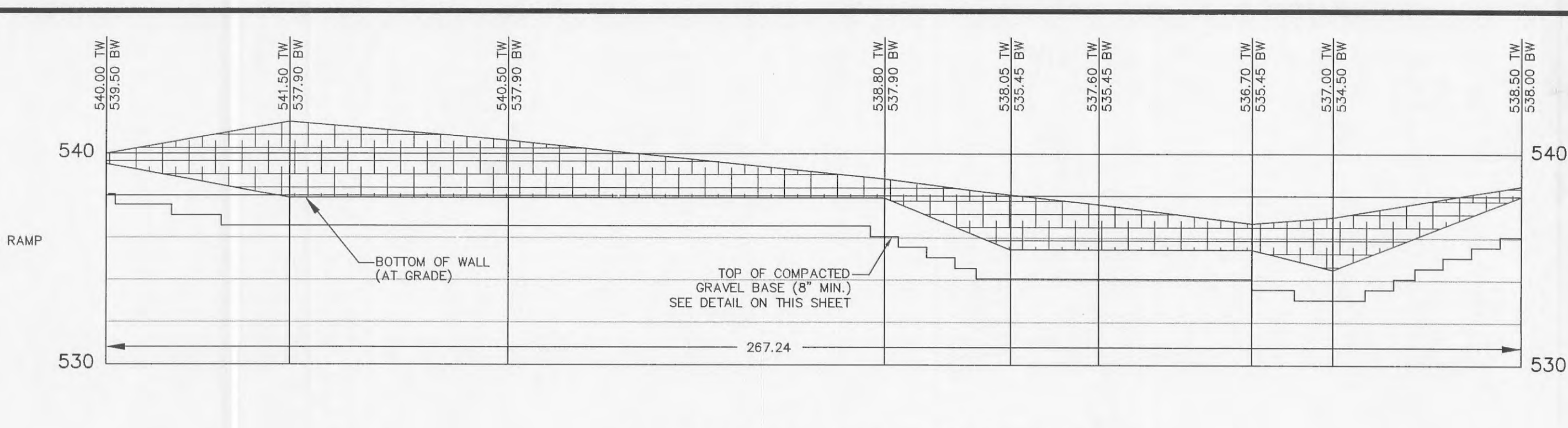


RETAINING WALL "A" PROFILE
 HORIZONTAL SCALE: 1"=20'
 VERTICAL SCALE: 1"=5'

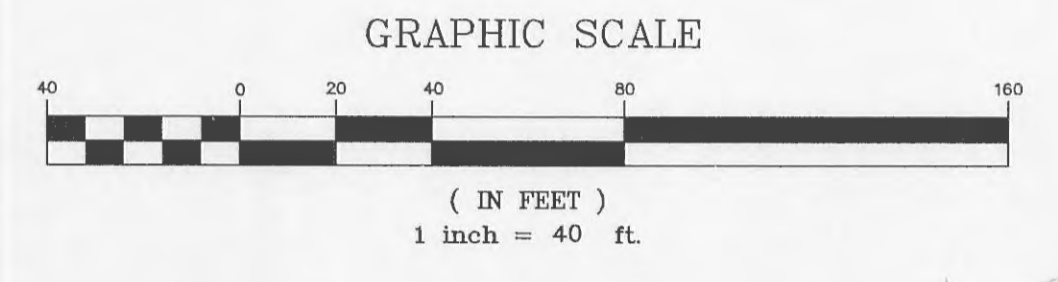


RETAINING WALL "B" PROFILE
 HORIZONTAL SCALE: 1"=20'
 VERTICAL SCALE: 1"=5'

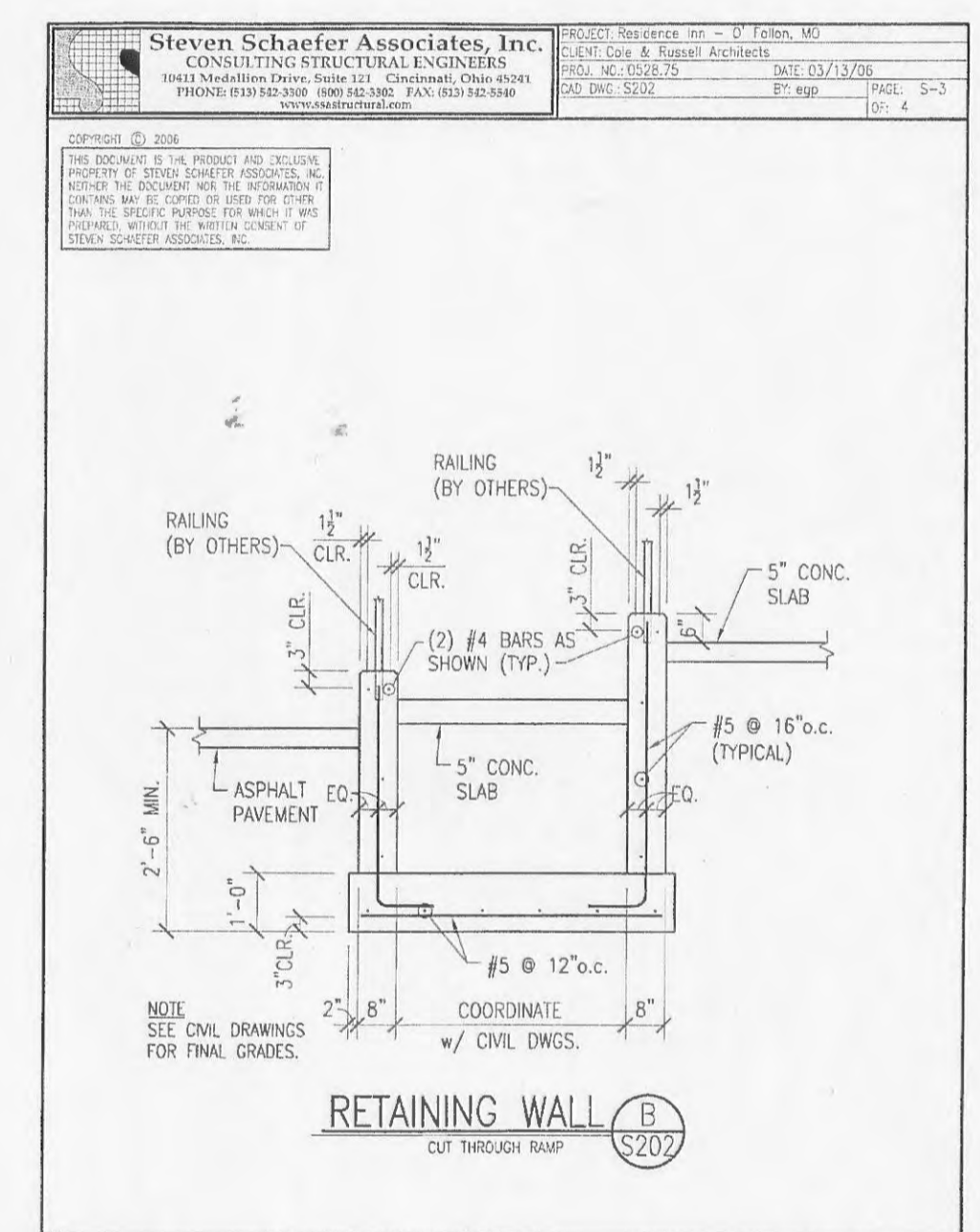
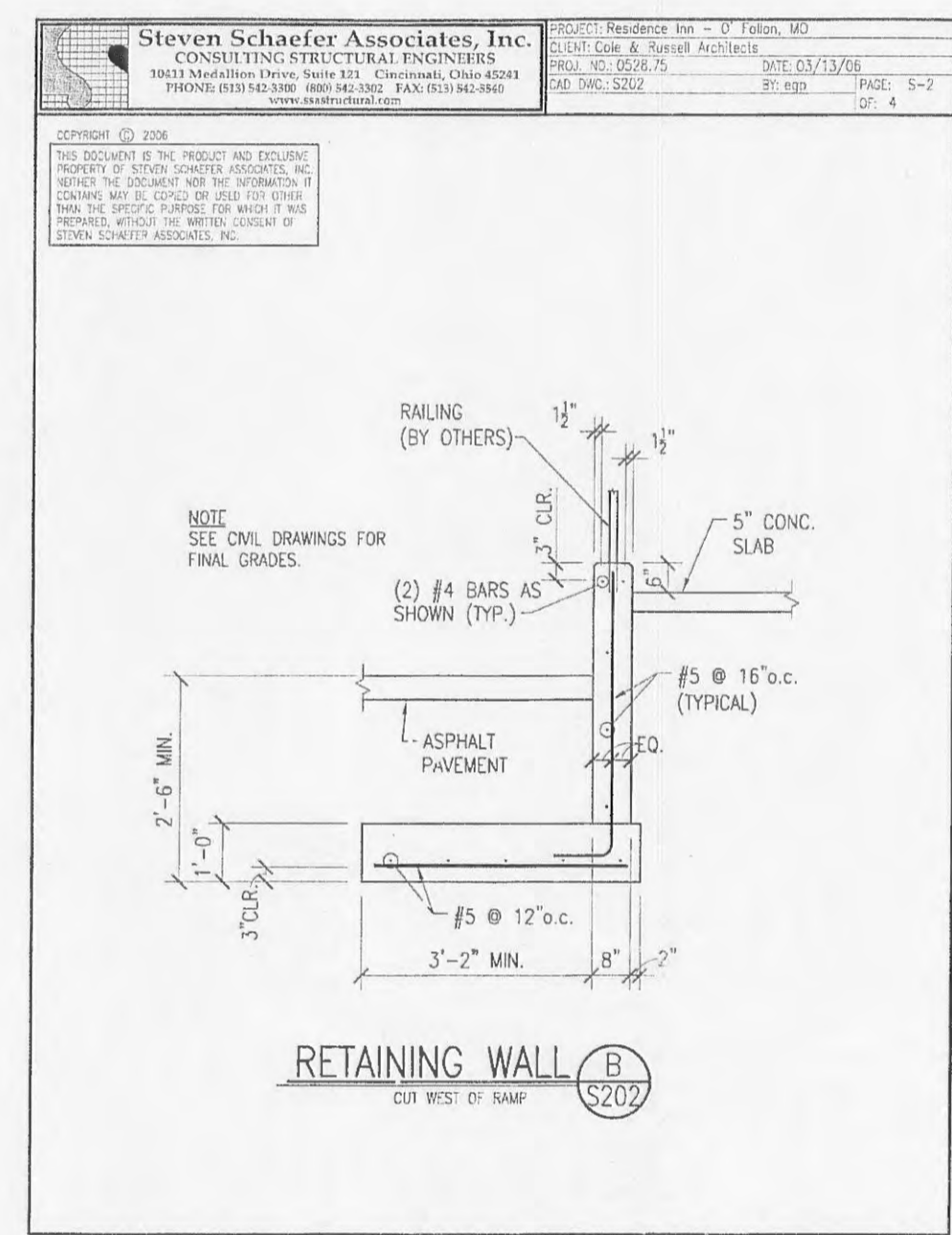
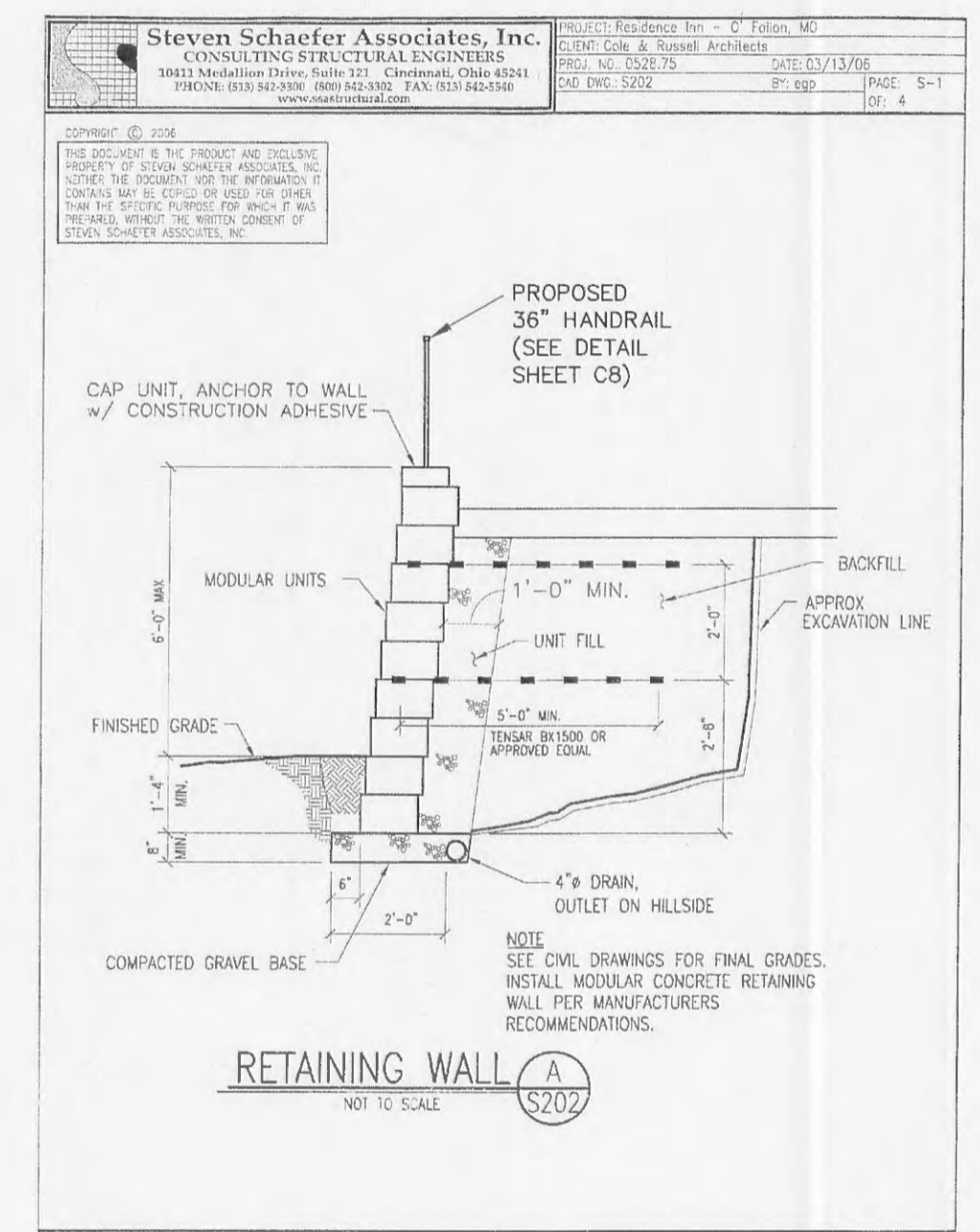


RETAINING WALL "C" PROFILE
 HORIZONTAL SCALE: 1"=20'
 VERTICAL SCALE: 1"=5'

SEE SHEET C8 FOR FENCE DETAIL



BJC - PROGRESS WEST
LOT 6
 PB. 40, PGS. 290-293



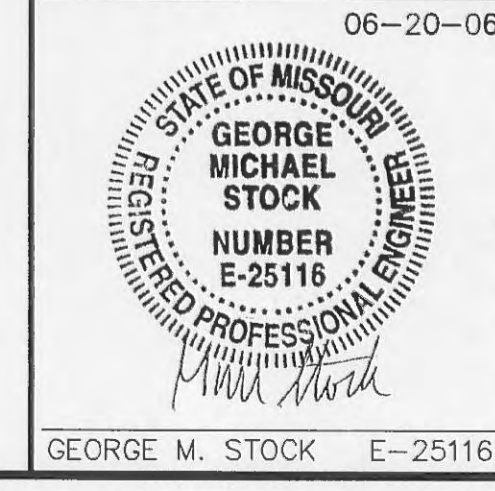
SEE SHEET C8 FOR FENCE DETAIL

PAVEMENT LEGEND

- ASPHALT PAVEMENT (LIGHT-DUTY)
- ASPHALT PAVEMENT (HEAVY-DUTY)
- CONCRETE PAVEMENT

- △ 06-20-06 REVISED PER CITY COMMENTS DATED 6-13-2006
- △ 05-31-06 REVISED PER CITY COMMENTS DATED 5-12-2006
- △ 05-05-06 WATER LINE CHANGED FROM 4" TO 3"
- △ 04-26-06 REVISED PER CITY COMMENTS
- △ 02-28-06 REVISED WALL PROFILE A, ADDED COTTLEVILLE FIRE NOTES ON SHEET C2
- △ 02-13-06 IN-HOUSE
- △ 01-09-06 REVISED PER ARCHITECTURAL FOOTPRINT AND FIRE DEPT. COMMENTS

P&Z NOS: 99-104.12
 APPROVED ON 12/15/05



SITE GEOMETRIC PLAN & WALL PROFILES
RESIDENCE INN - PROGRESS POINT VILLAGE

Stock & Associates
Consulting Engineers, Inc.

257 Chesterfield Business Parkway
 St. Louis, MO 63005
 PH. (636) 530-9100
 FAX (636) 530-9130
 e-mail: general@stockassoc.com
 Web: www.stockassoc.com

DRAWN BY: J.P.P. DATE: 1/13/06 CHECKED BY: G.M.S. DATE: 1/13/06 DATE: 1/13/06 JOB NUMBER: 205-3718 SHEET: C6 of 12