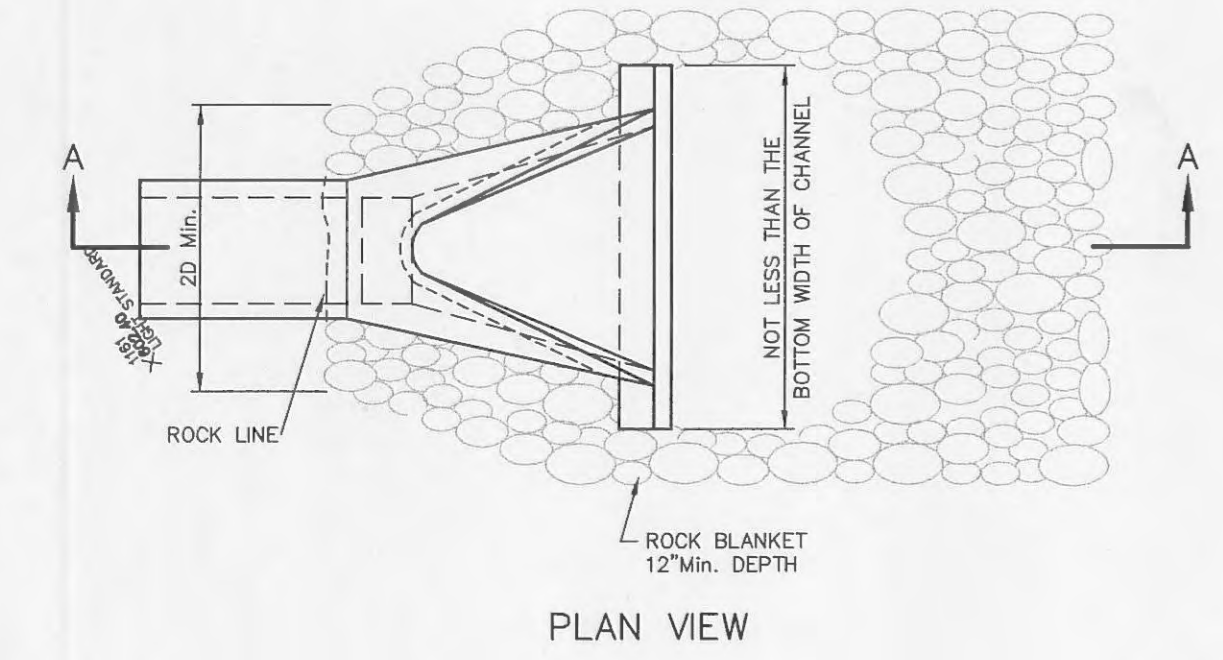
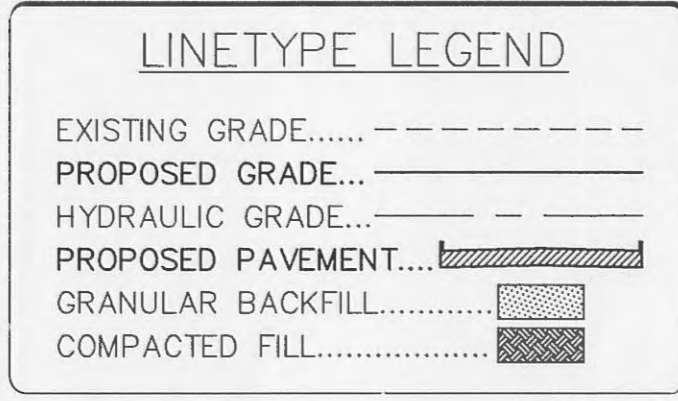


STORM SEWER PROFILE (PRIVATE)

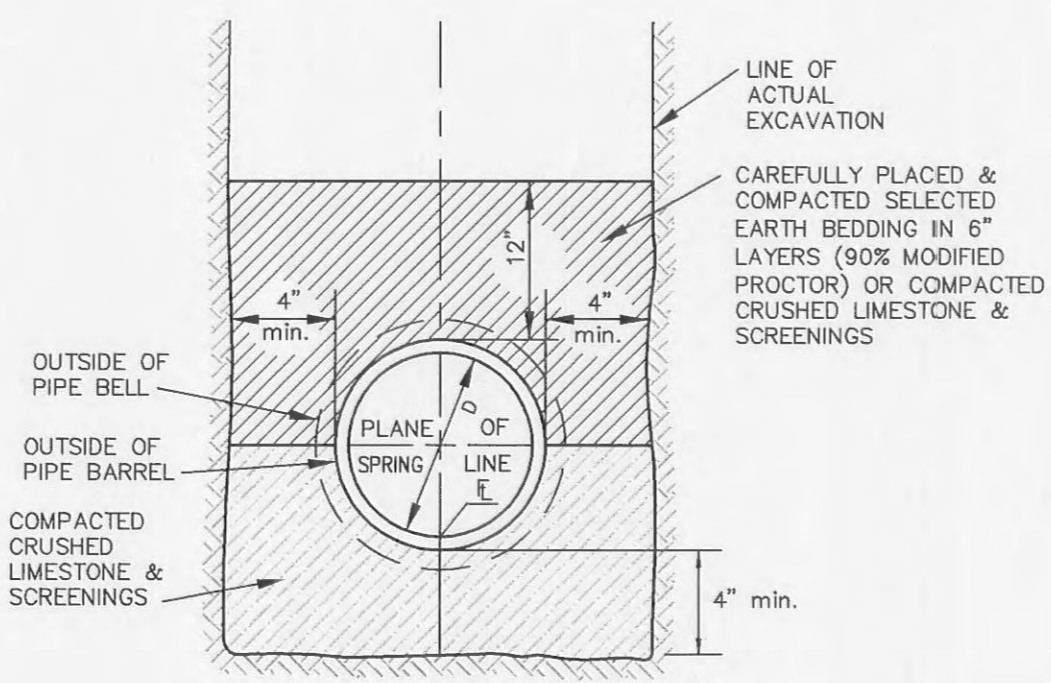
HORIZONTAL SCALE: 1"=40'  
VERTICAL SCALE: 1"=10'



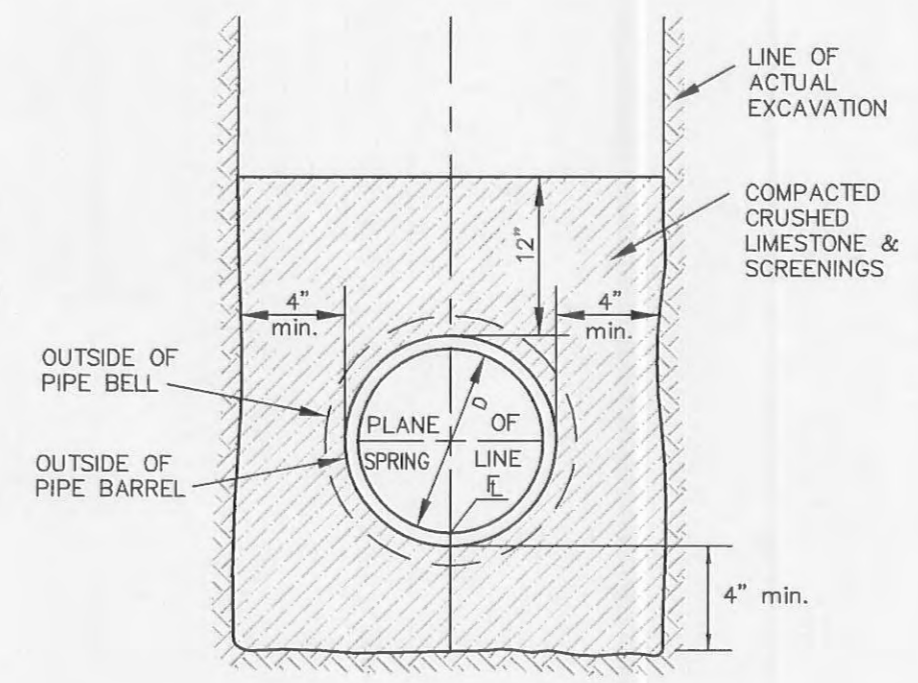
PLAN VIEW



LINETYPE LEGEND

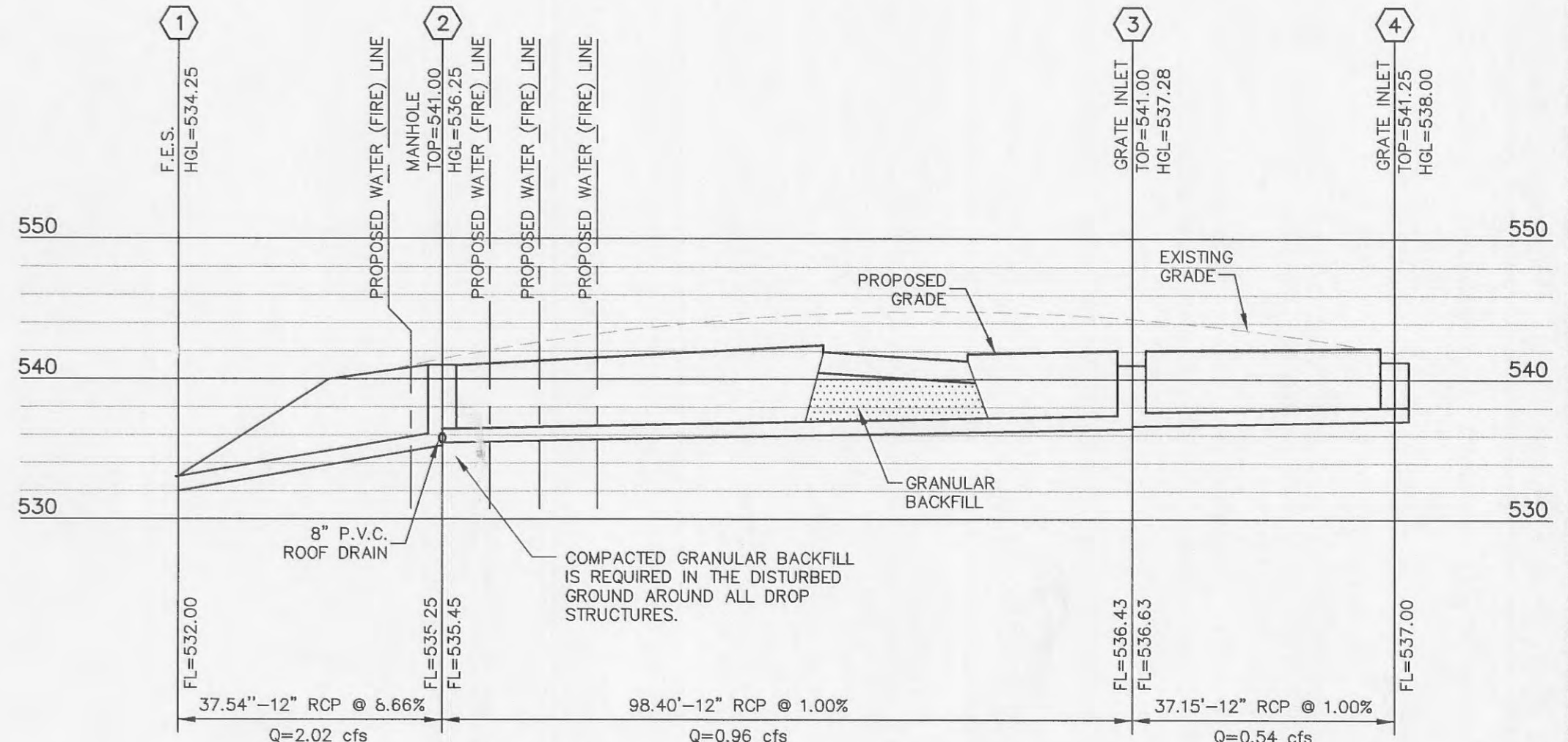


PIPE BEDDING CLASS "C"  
(MODIFIED FOR REINFORCED CONCRETE PIPE)



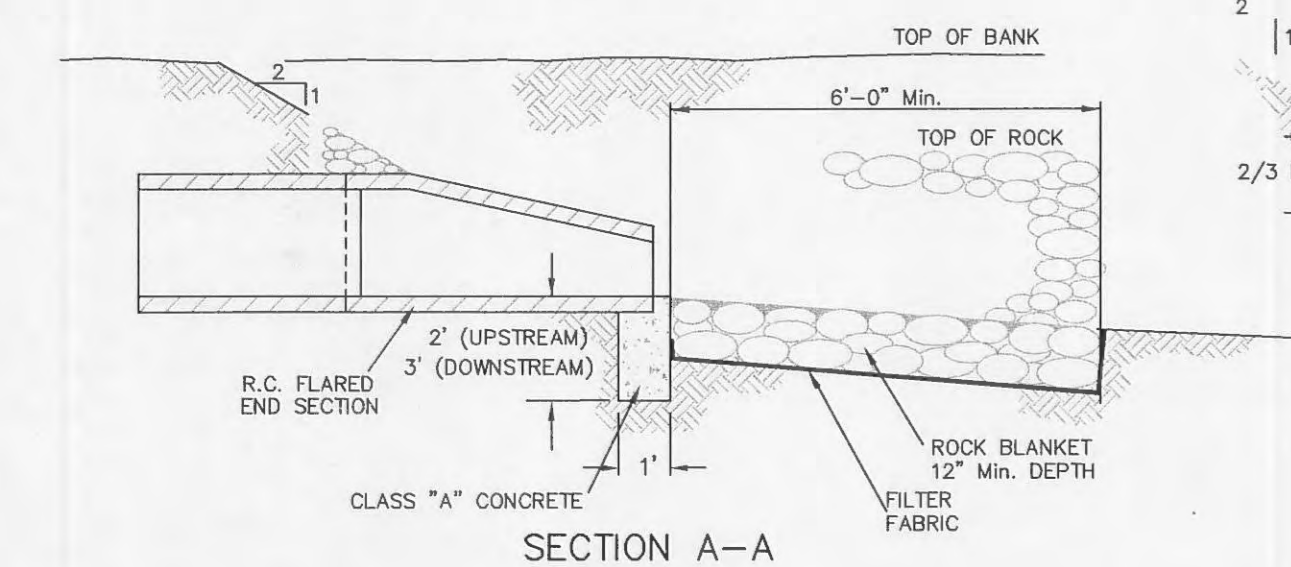
PIPE BEDDING CLASS "C"  
(FOR ALL PIPE EXCEPT REINFORCED CONCRETE PIPE)

PIPE BEDDING DETAILS  
(n.t.s.)

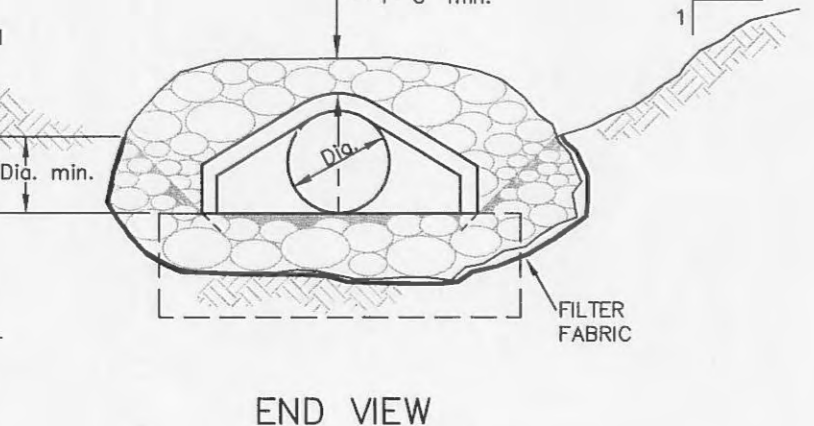


STORM SEWER PROFILE (PRIVATE)

HORIZONTAL SCALE: 1"=40'  
VERTICAL SCALE: 1"=10'



SECTION A-A

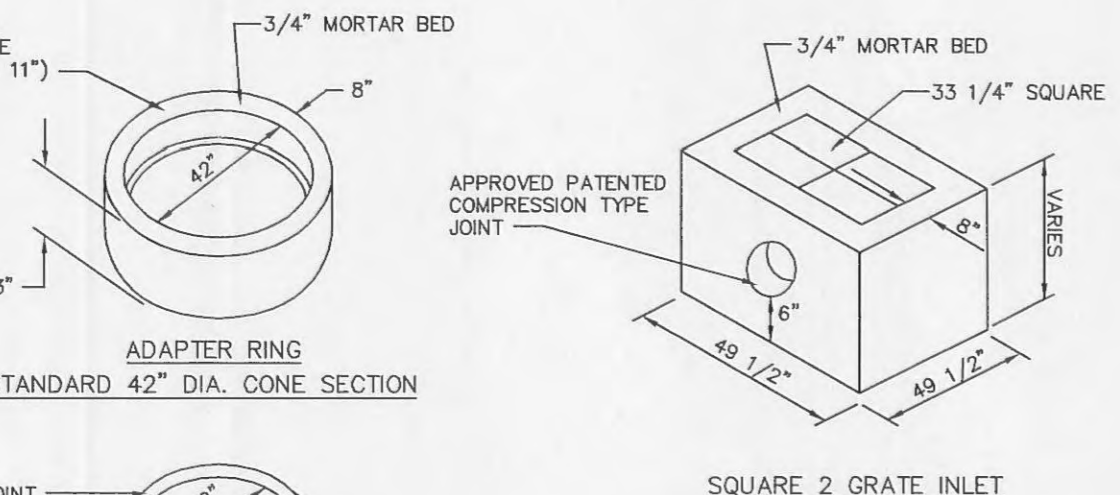
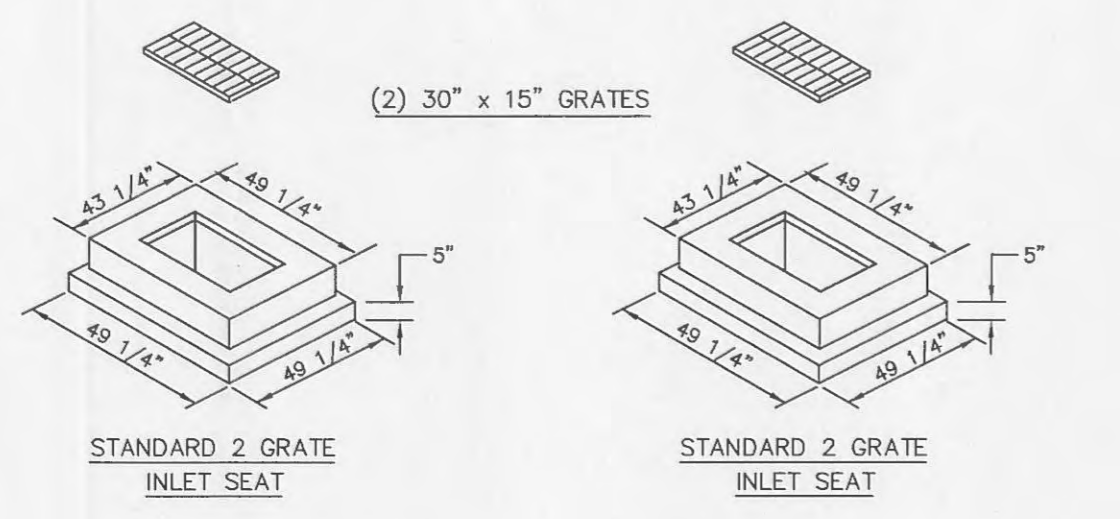


END VIEW

NOTES:  
1. TO BE USED AT INTAKE AND DISCHARGE END OF PIPE, GRADE OF ROCK BLANKET TO BE ADJUSTED ACCORDINGLY.

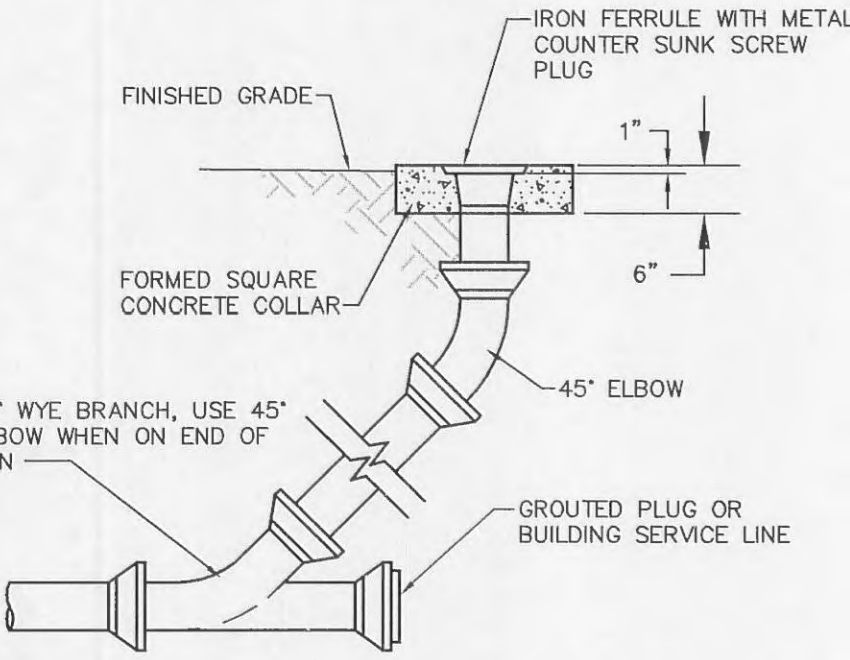
FLARED END SECTION DETAIL  
(n.t.s.)

NOTE: CUT-OFF WALL DEPTH ON PROFILES AS APPLICABLE

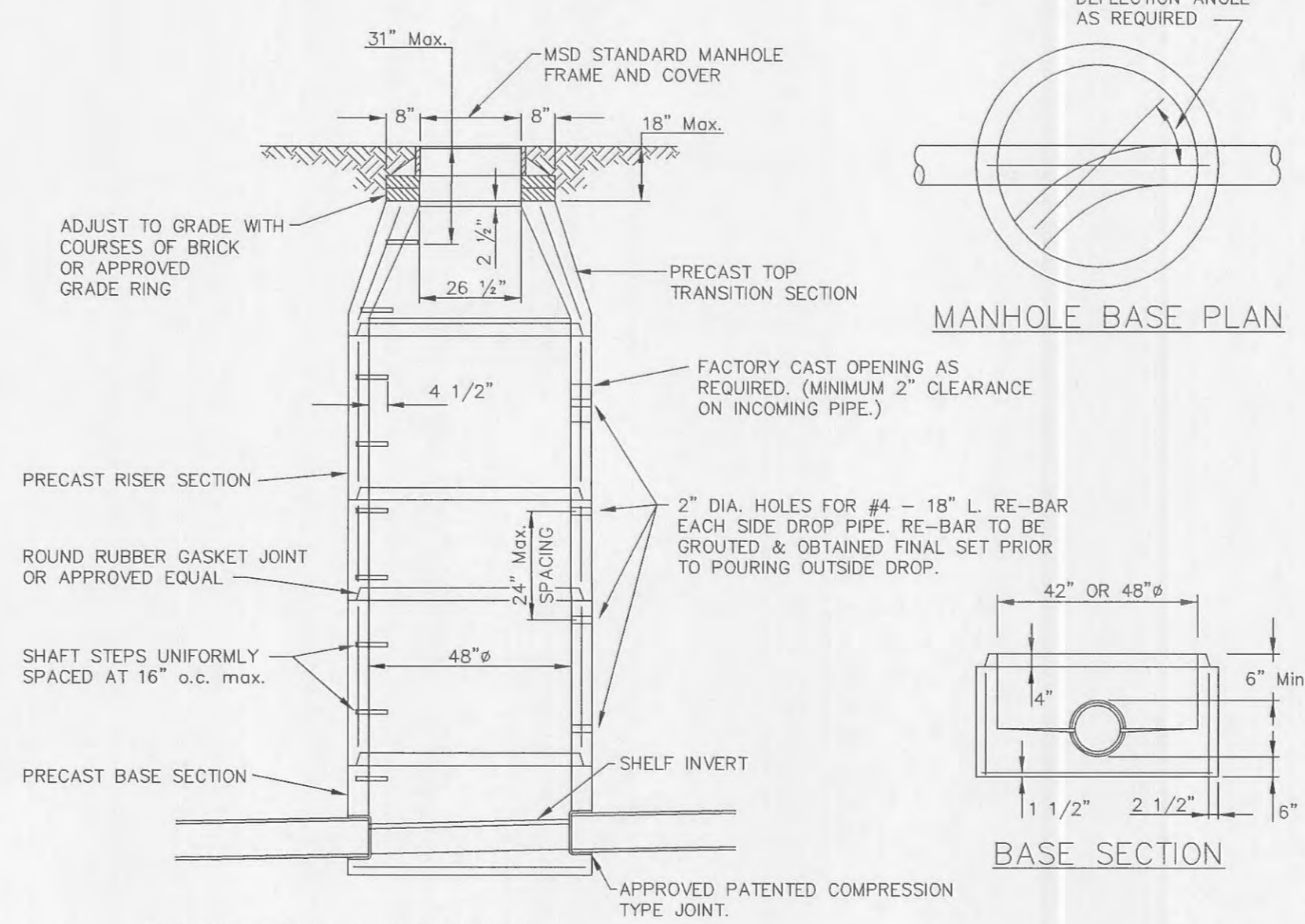


NOTE:  
INLETS ON THIS SHEET ARE TO BE USED IN LOCATIONS WHERE STANDARD OPEN THROAT INLETS CAN NOT BE USED, IN PAVED TRAFFIC WAY AND IN LIMITED EASEMENTS.

2-GRADE INLET DETAIL  
(n.t.s.)



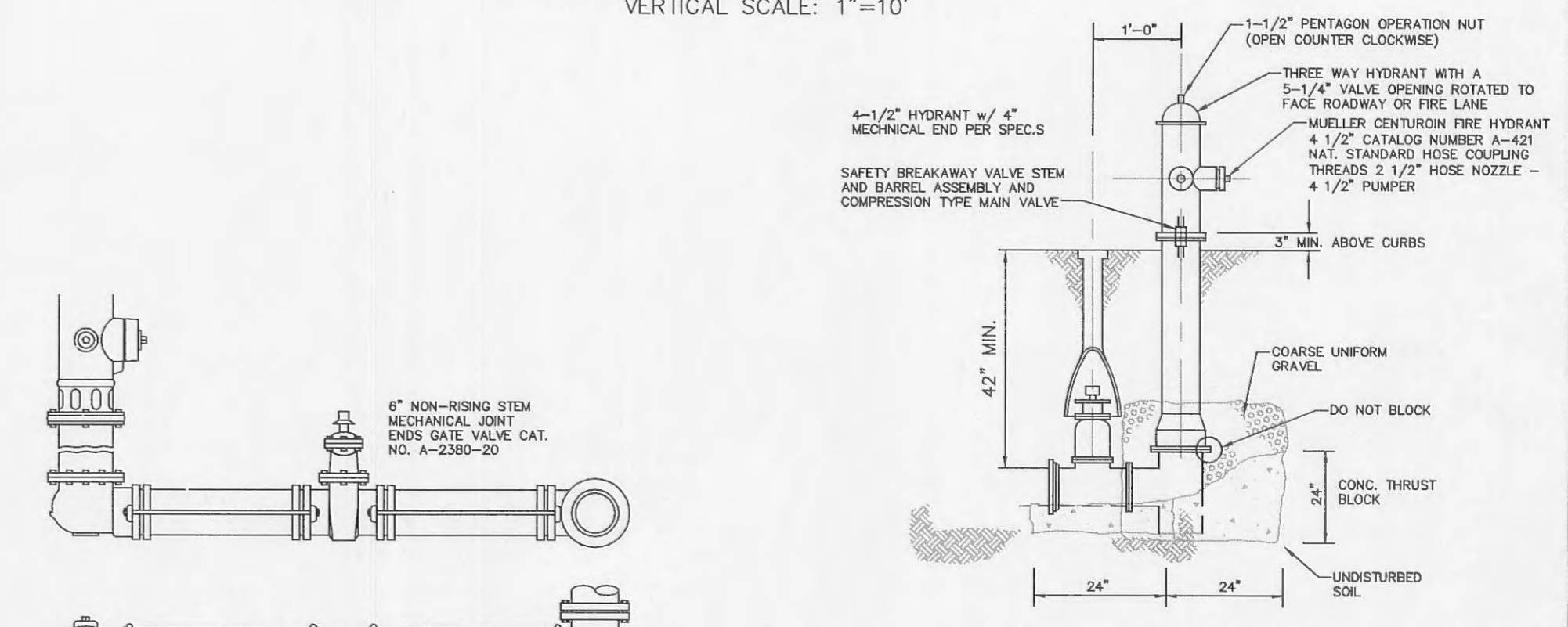
CLEANOUT DETAIL  
(n.t.s.)



PRECAST MANHOLE  
(n.t.s.)

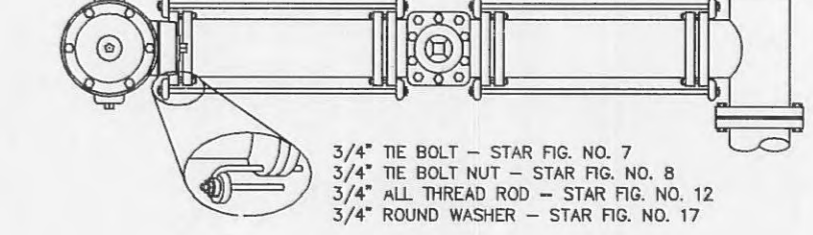
FLOWLINE ELEVATION OF INCOMING PIPES SHALL BE ONE (1) INCH HIGHER THAN THAT OF OUTGOING PIPE.

SEE A.S.T.M. C-478 FOR MIN. STEEL REQUIREMENTS.



FIRE HYDRANT DETAIL  
SCALE = N.T.S.

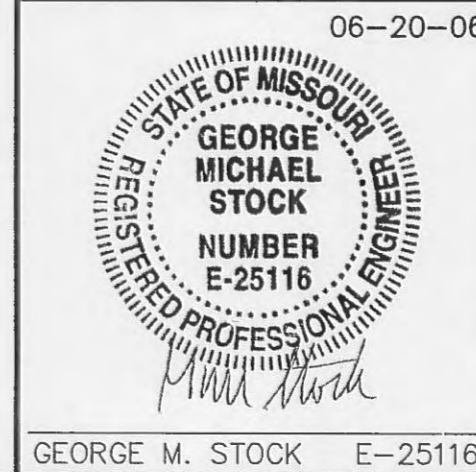
FIRE HYDRANT NOTES  
1) THE FIRE HYDRANT SHALL BE PROVIDED WITH A CONTROL VALVE IN THE HYDRANT CONNECTION SUCH THAT THE HYDRANT CAN BE REMOVED FROM SERVICE WITHOUT SHUTTING OFF WATER SUPPLY TO OTHER FIRE HYDRANTS.  
2) THE FIRE HYDRANT SHALL HAVE NOT LESS THAN TWO 2-1/2 INCH OUTLETS AND ONE 4-1/2 INCH OUTLET. A 5-1/4 INCH VALVE, A 6 INCH BARREL AND SHALL BE OF THE BREAKAWAY DESIGN, FROST FREE WITH CHAIR, LEFT HAND OPEN DESIGN AND HAVE NATIONAL STANDARD THREADS.



HYDRANT SETTING  
(n.t.s.)

- △ 06-20-06 REVISED PER CITY COMMENTS DATED 6-13-2006
- △ 05-31-06 REVISED PER CITY COMMENTS DATED 5-12-2006
- △ 05-05-06 WATER LINE CHANGED FROM 4" TO 3"
- △ 04-26-06 REVISED PER CITY COMMENTS
- △ 02-28-06 REVISED WALL PROFILE A, ADDED COTTLEVILLE FIRE NOTES ON SHEET C2
- △ 02-13-06 IN-HOUSE
- △ 01-09-06 REVISED PER ARCHITECTURAL FOOTPRINT AND FIRE DEPT. COMMENTS

P&Z NOS: 99-104.12  
APPROVED ON 12/15/05



SEWER PROFILES, DETAILS, AND HYDRAULICS  
RESIDENCE INN - PROGRESS POINT VILLAGE

**STOCK & ASSOCIATES**  
Consulting Engineers, Inc.  
257 Chesterfield Business Parkway  
St. Louis, MO 63005  
PH. (636) 530-9100  
FAX (636) 530-9130  
e-mail: general@stockassoc.com  
Web: www.stockassoc.com

DRAWN BY: J.P.P.	DATE: 1/13/06	CHECKED BY: G.M.S.	DATE: 1/13/06	JOB NUMBER: 205-3718	SHEET: C7 of 12
------------------	---------------	--------------------	---------------	----------------------	-----------------