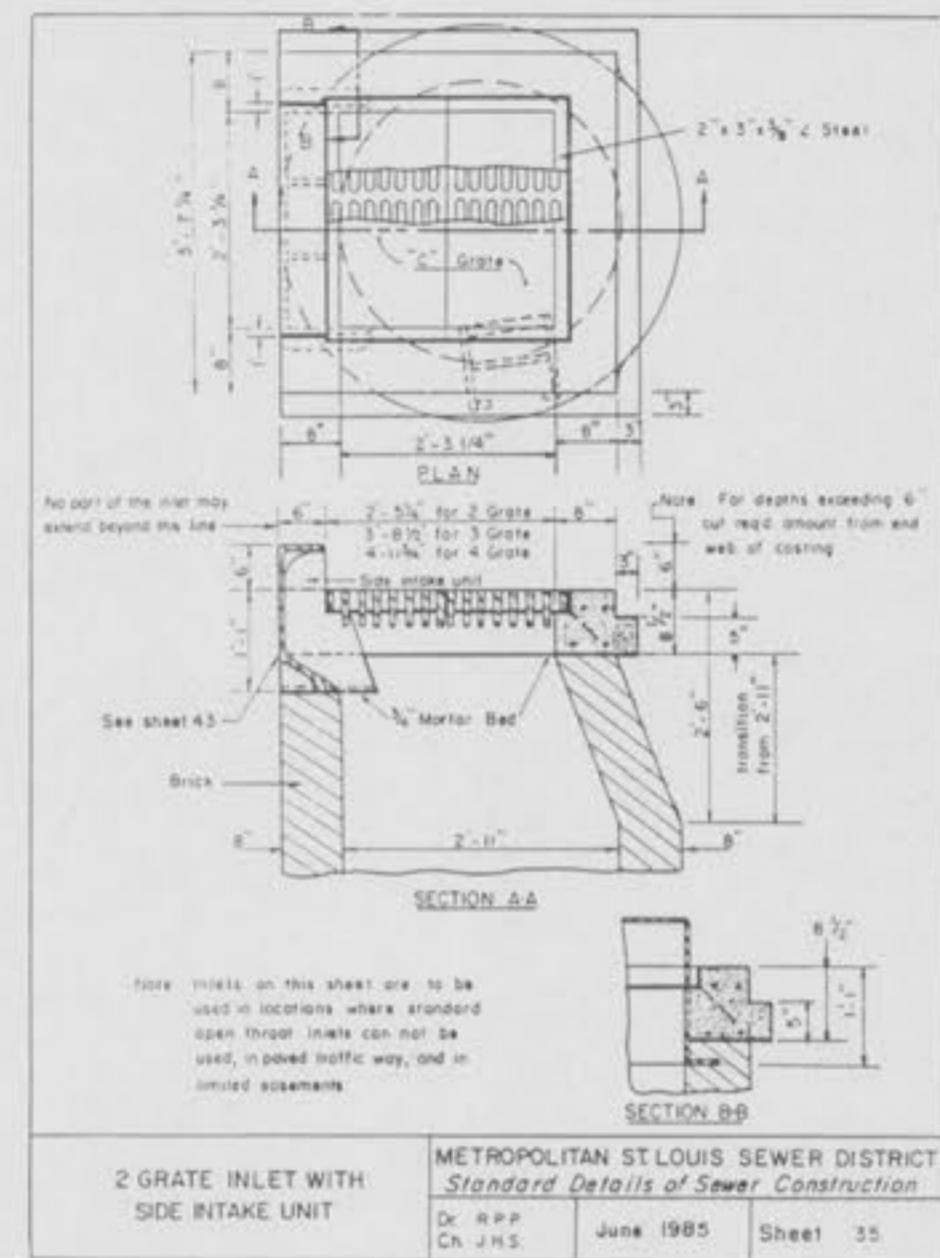
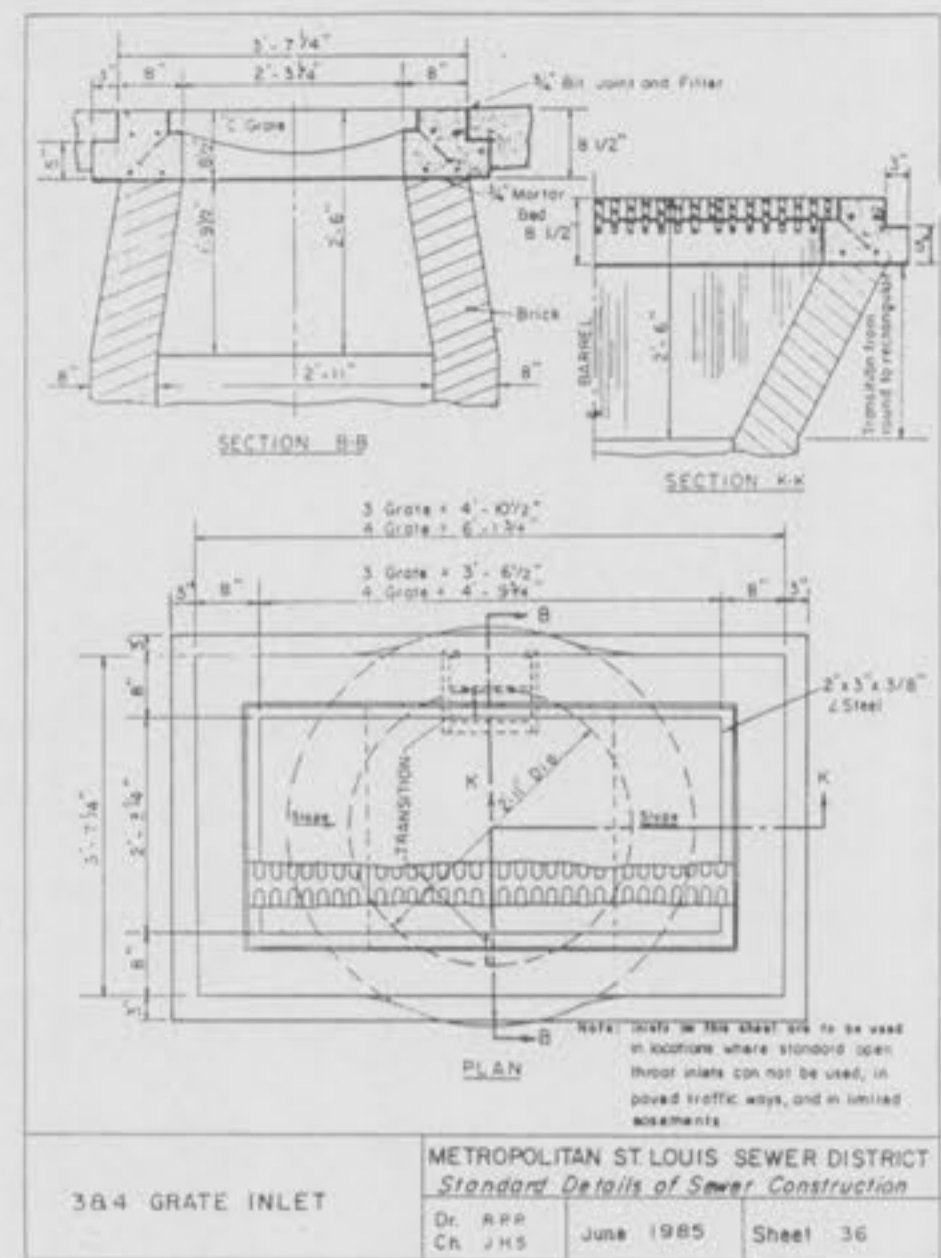


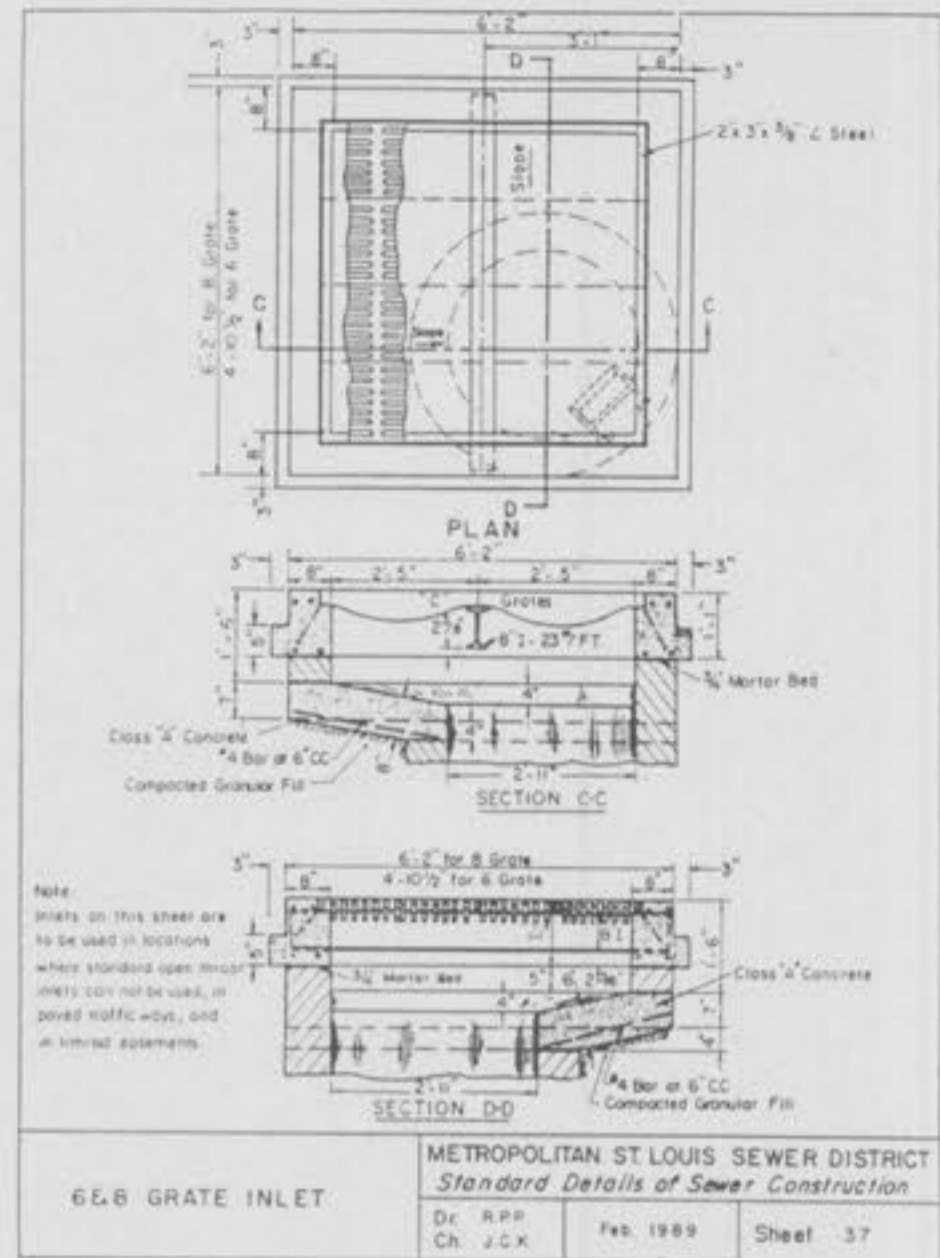
**2 GRATE INLET**  
 METROPOLITAN ST. LOUIS SEWER DISTRICT  
*Standard Details of Sewer Construction*  
 Dr. R.P.P. June 1984 Sheet 34  
 Ch. J.H.S.



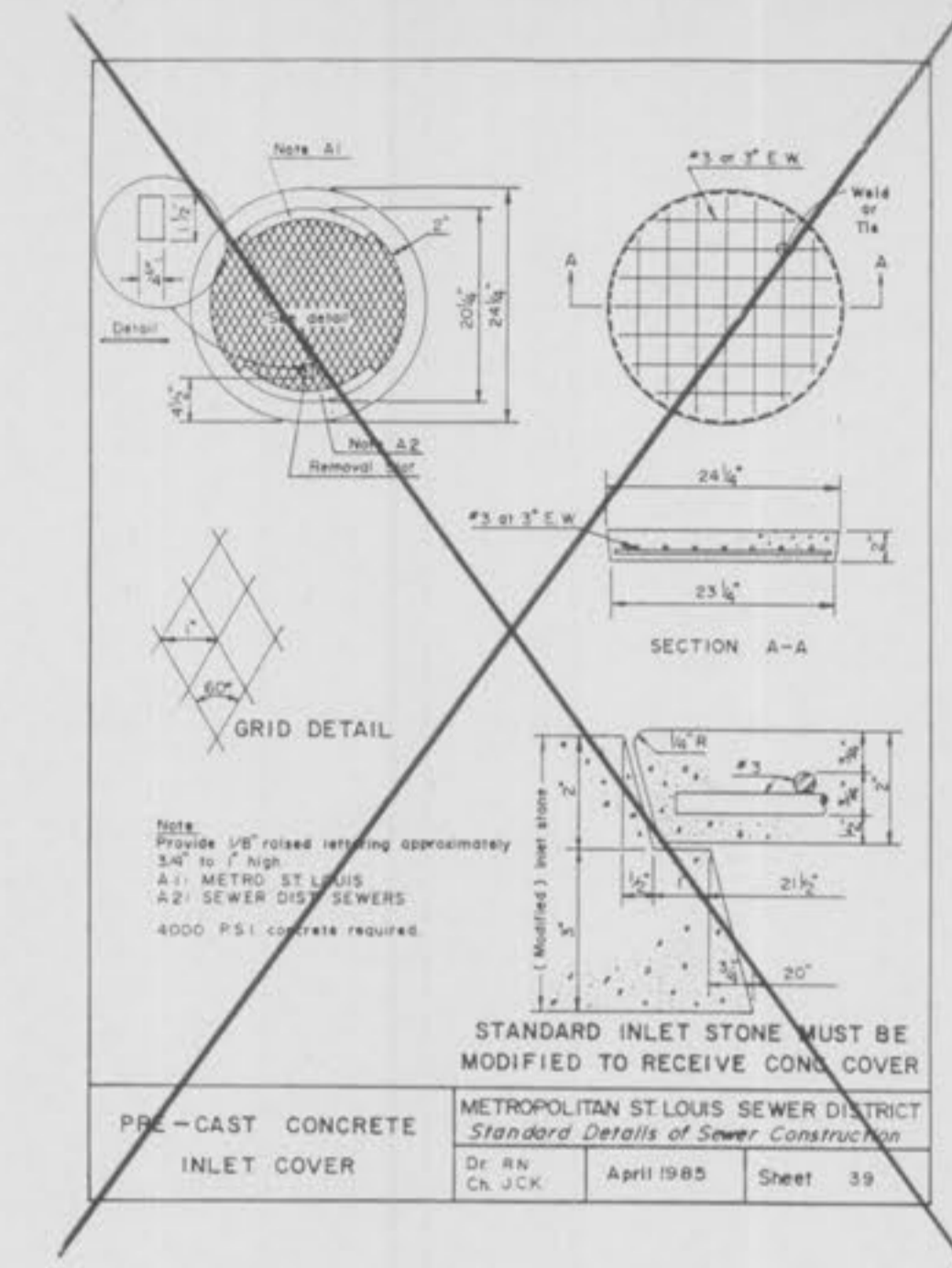
**2 GRATE INLET WITH SIDE INTAKE UNIT**  
 METROPOLITAN ST. LOUIS SEWER DISTRICT  
*Standard Details of Sewer Construction*  
 Dr. R.P.P. June 1985 Sheet 35  
 Ch. J.H.S.



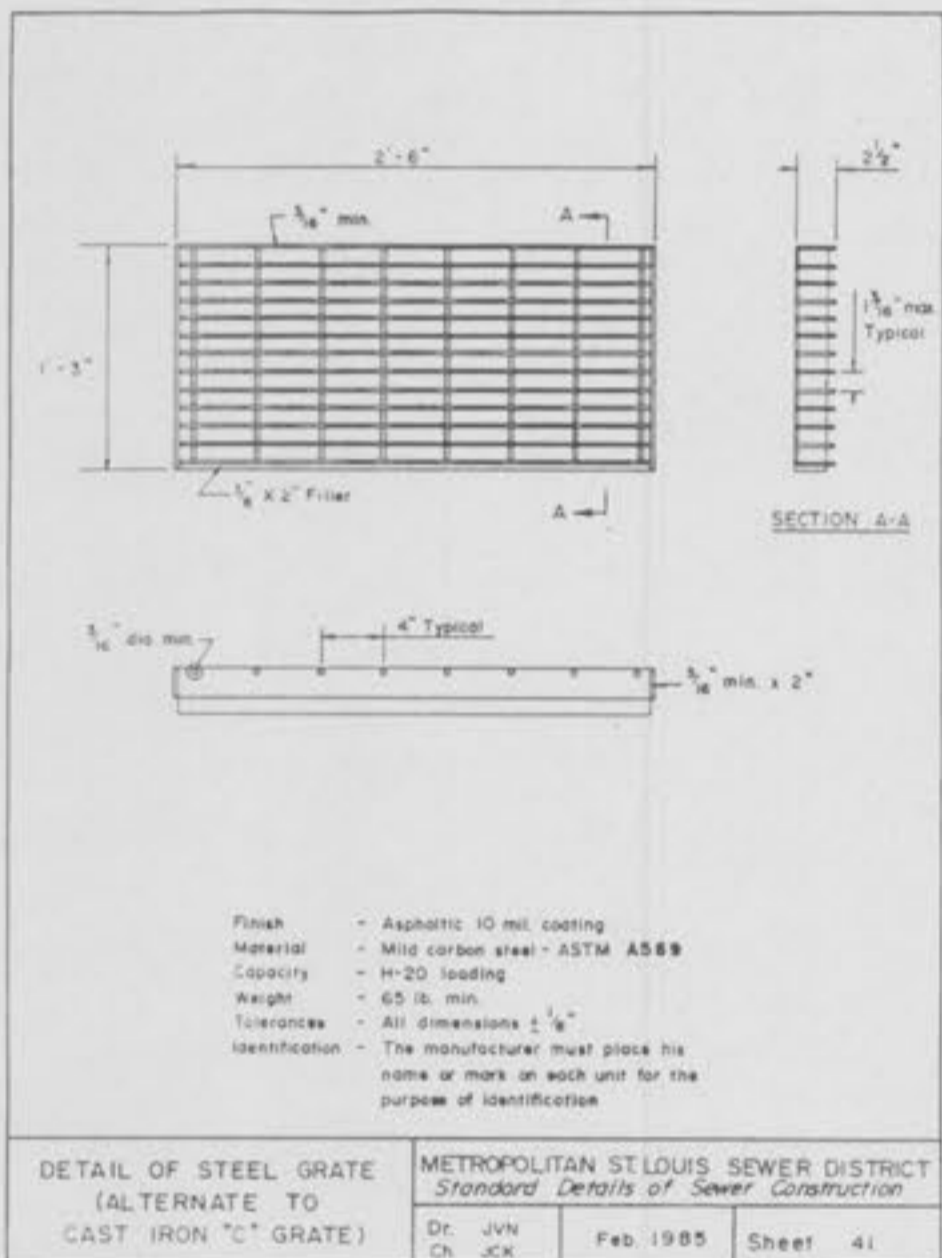
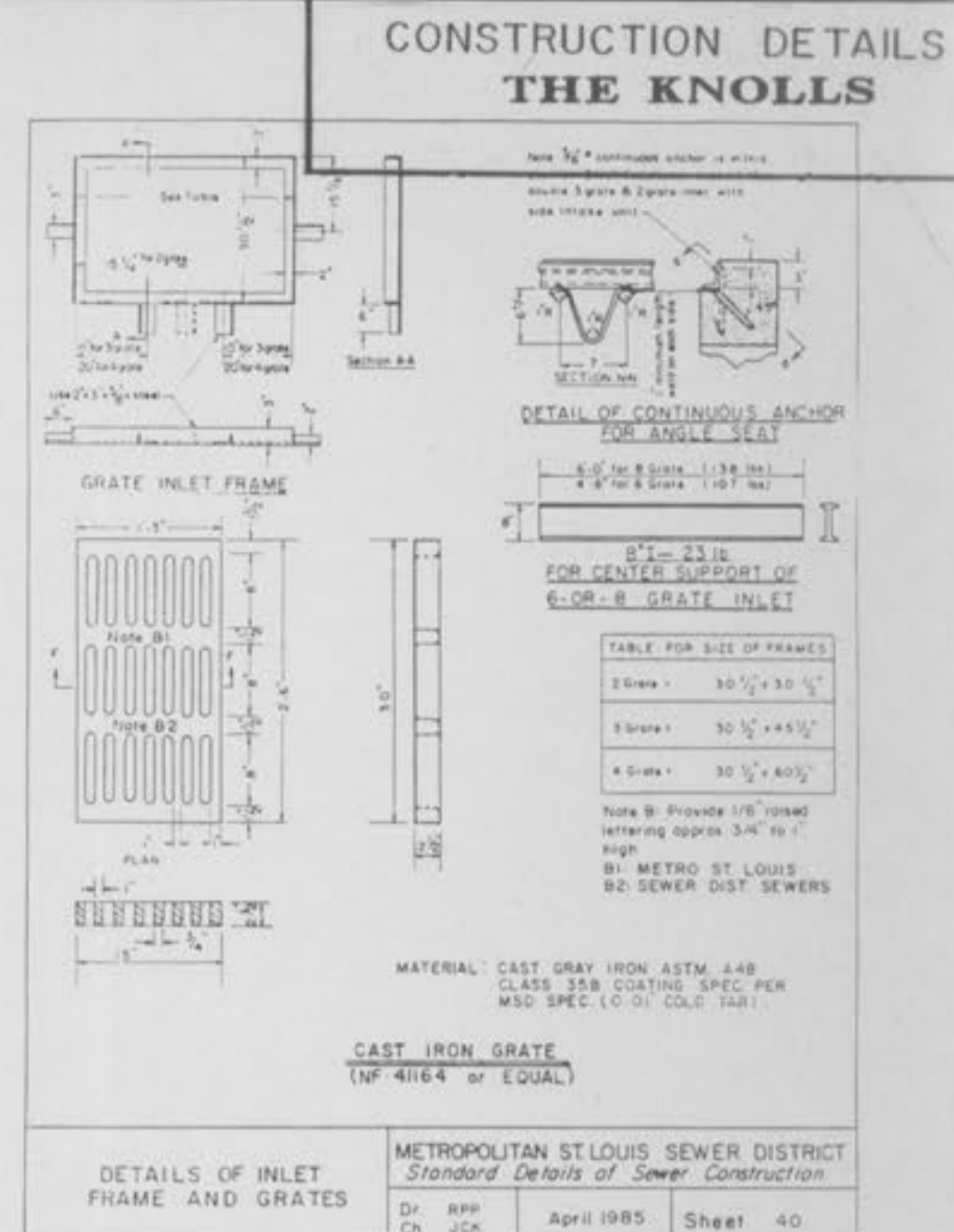
**3 OR 4 GRATE INLET**  
 METROPOLITAN ST. LOUIS SEWER DISTRICT  
*Standard Details of Sewer Construction*  
 Dr. R.P.P. June 1985 Sheet 36  
 Ch. J.H.S.



**6 OR 8 GRATE INLET**  
 METROPOLITAN ST. LOUIS SEWER DISTRICT  
*Standard Details of Sewer Construction*  
 Dr. R.P.P. Feb. 1989 Sheet 37  
 Ch. J.C.K.



**PRE-CAST CONCRETE INLET COVER**  
 METROPOLITAN ST. LOUIS SEWER DISTRICT  
*Standard Details of Sewer Construction*  
 Dr. R.H. April 1985 Sheet 39  
 Ch. J.C.K.



**DETAIL OF STEEL GRATE (ALTERNATE TO CAST IRON \"C\" GRATE)**  
 METROPOLITAN ST. LOUIS SEWER DISTRICT  
*Standard Details of Sewer Construction*  
 Dr. J.V.V. Feb. 1985 Sheet 41  
 Ch. J.C.K.

