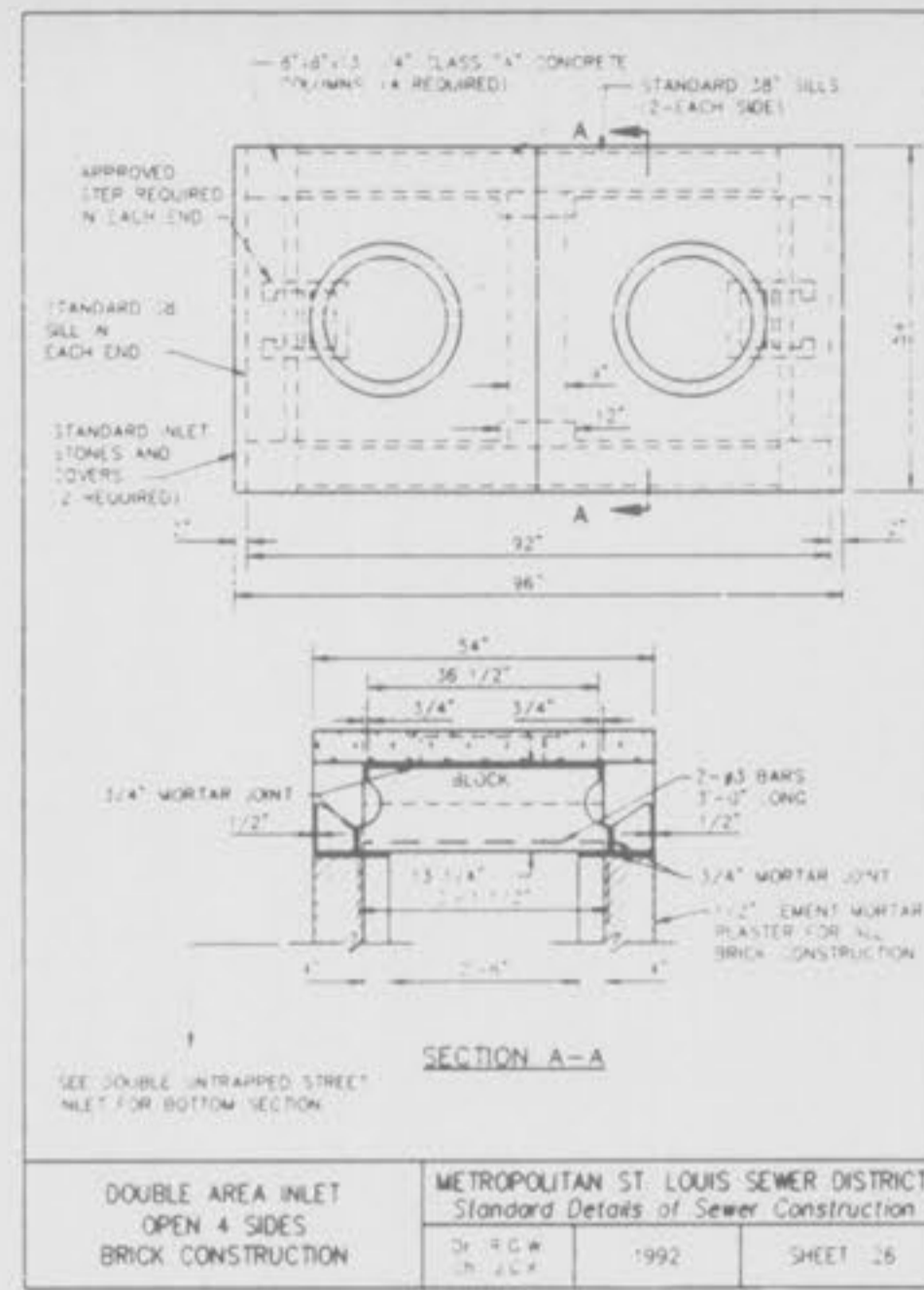
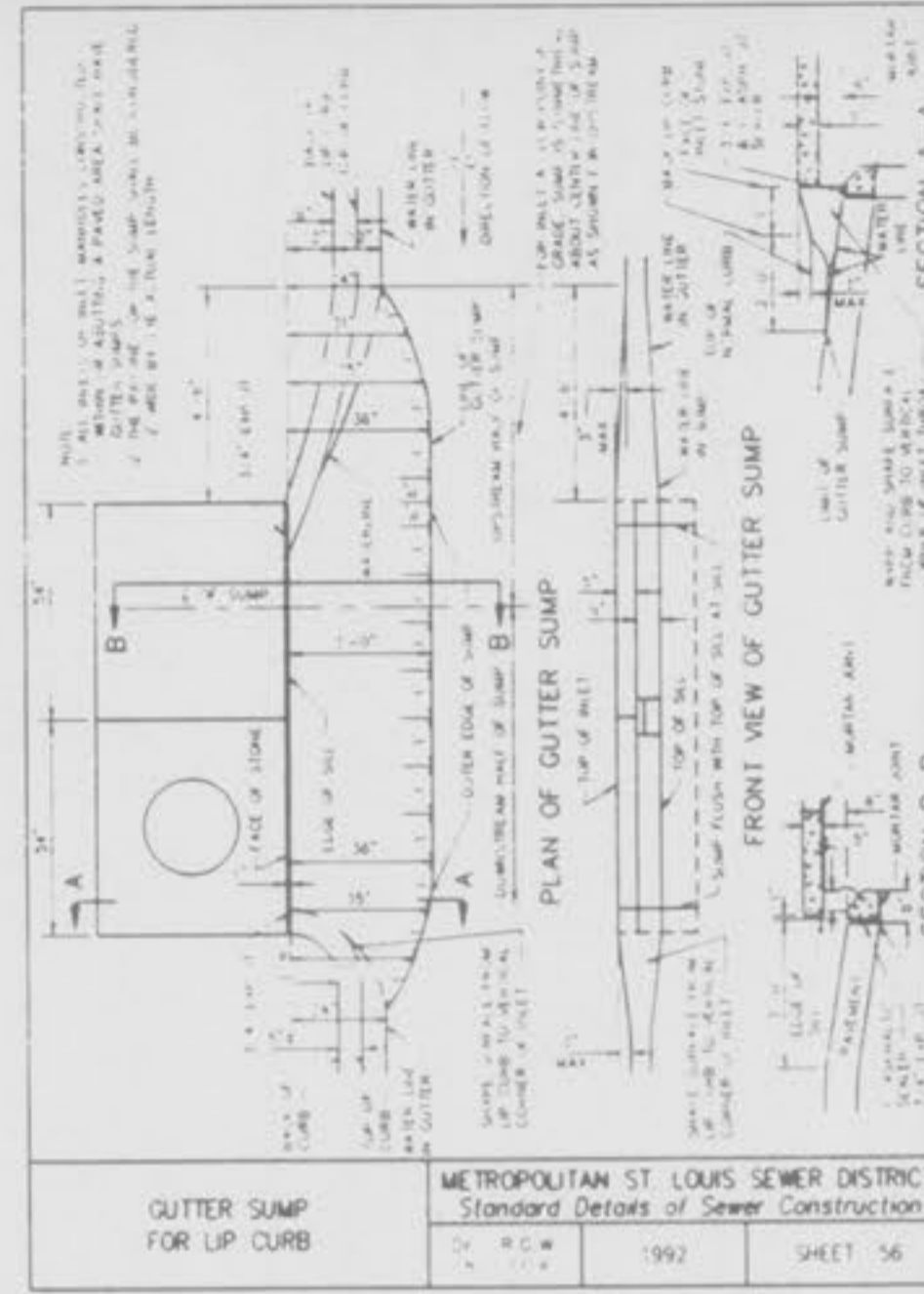


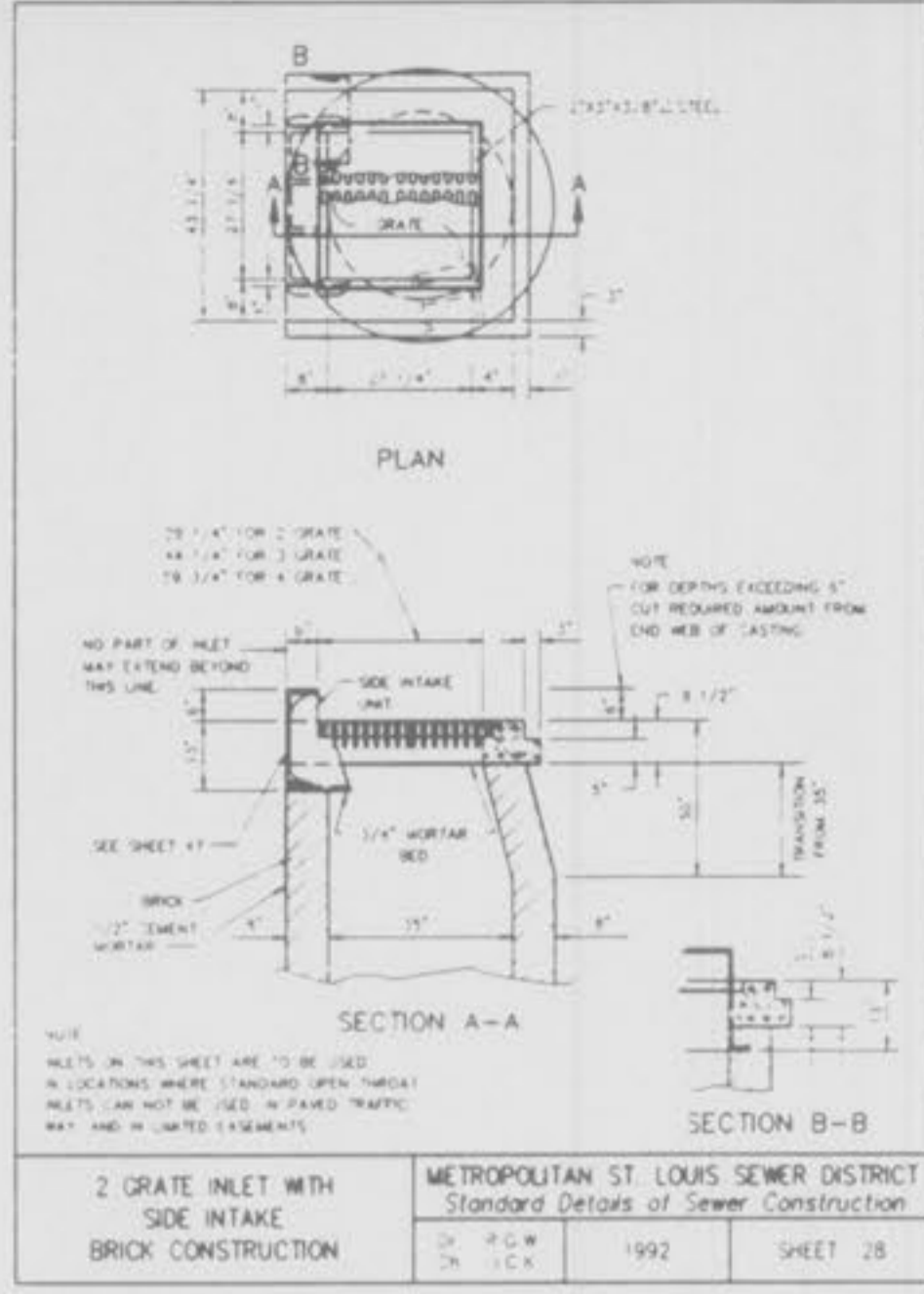
AREA INLET MANHOLE (12" THRU 24")  
 METROPOLITAN ST. LOUIS SEWER DISTRICT  
 Standard Details of Sewer Construction  
 D. P. W. 1992 SHEET 25



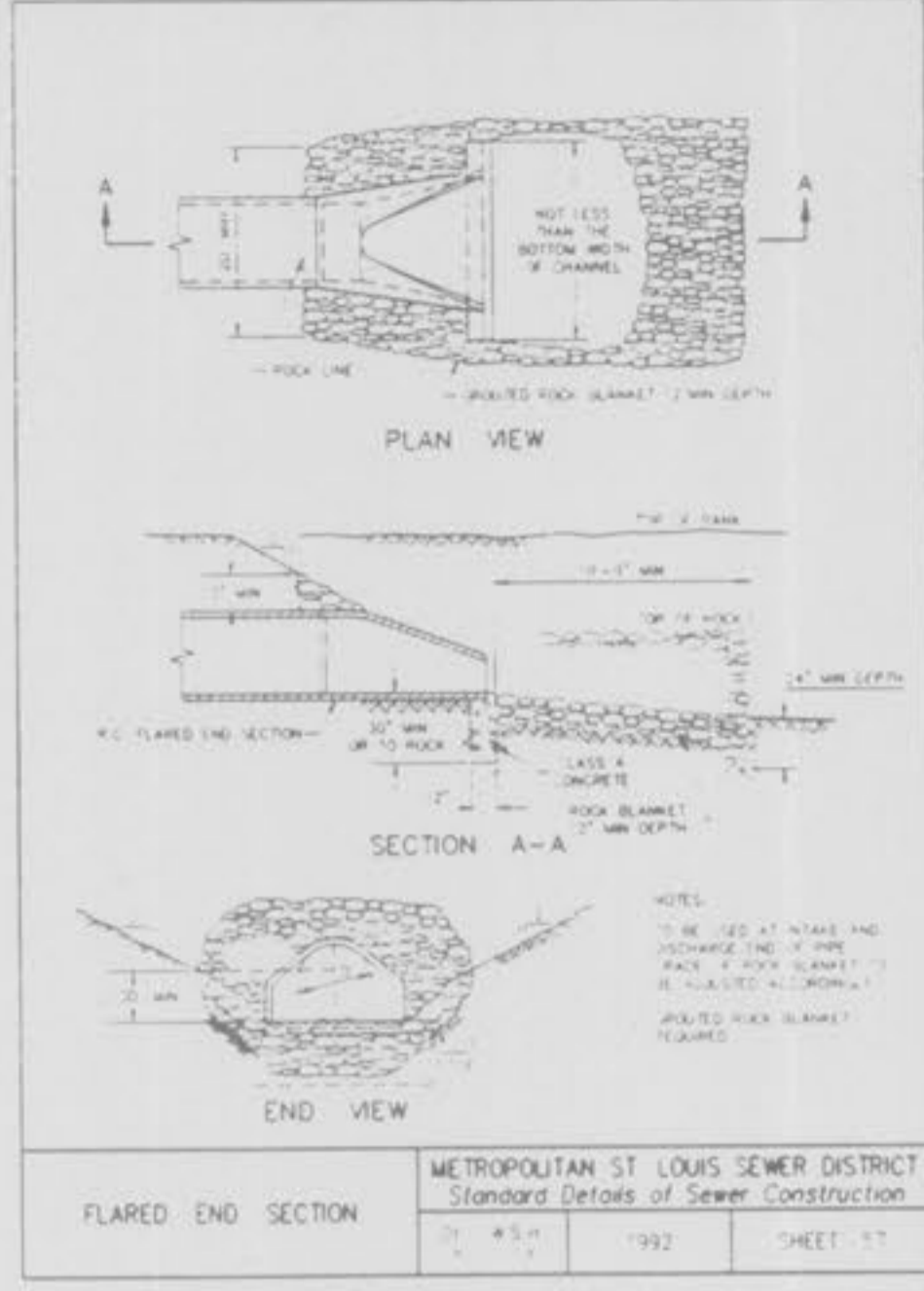
DOUBLE AREA INLET OPEN 4 SIDES BRICK CONSTRUCTION  
 METROPOLITAN ST. LOUIS SEWER DISTRICT  
 Standard Details of Sewer Construction  
 D. P. W. 1992 SHEET 26



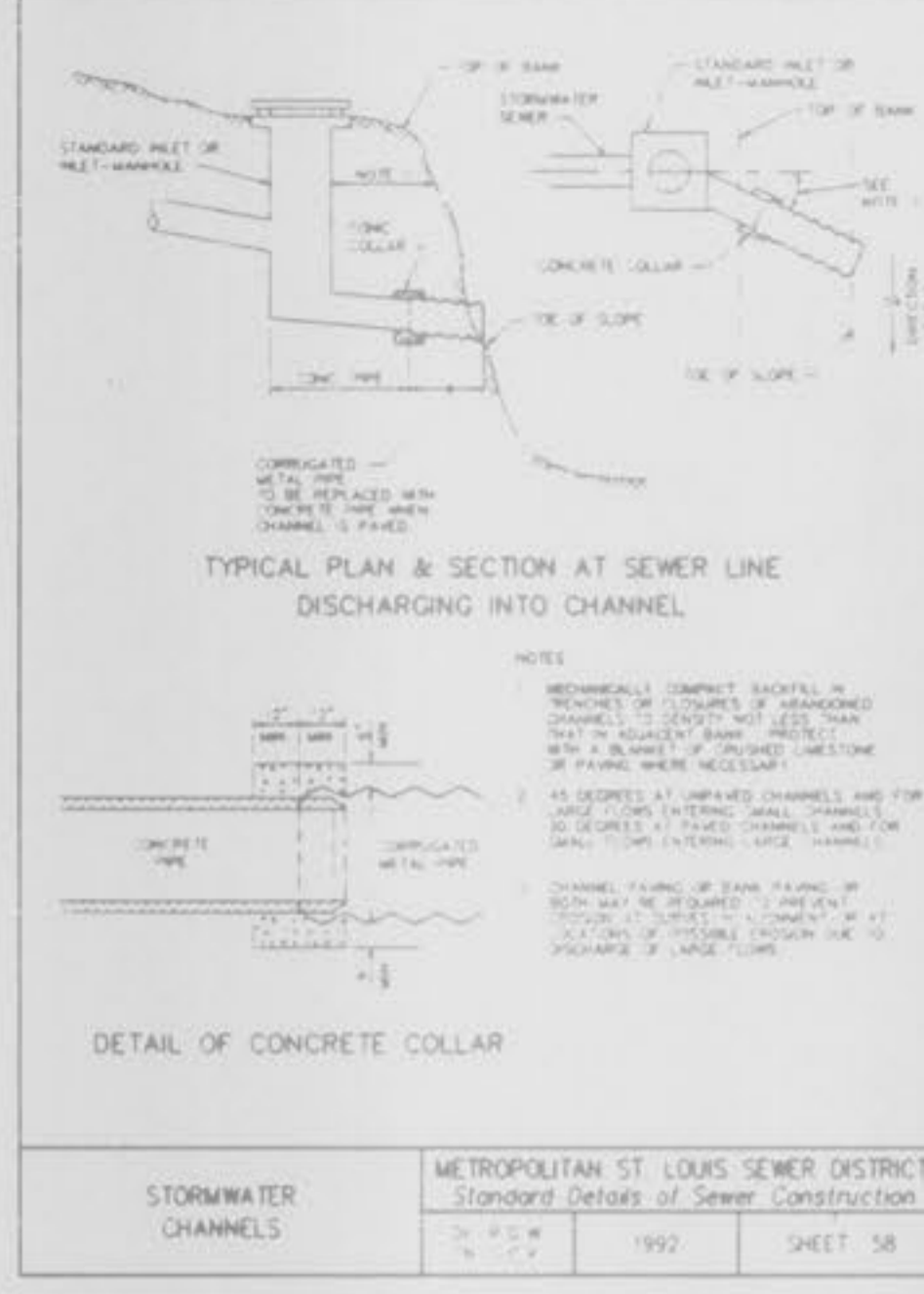
GUTTER SUMP FOR LIP CURB  
 METROPOLITAN ST. LOUIS SEWER DISTRICT  
 Standard Details of Sewer Construction  
 D. P. W. 1992 SHEET 26



2 GATE INLET WITH SIDE INTAKE BRICK CONSTRUCTION  
 METROPOLITAN ST. LOUIS SEWER DISTRICT  
 Standard Details of Sewer Construction  
 D. P. W. 1992 SHEET 28



FLARED END SECTION  
 METROPOLITAN ST. LOUIS SEWER DISTRICT  
 Standard Details of Sewer Construction  
 D. P. W. 1992 SHEET 27



TYPICAL PLAN & SECTION AT SEWER LINE DISCHARGING INTO CHANNEL  
 METROPOLITAN ST. LOUIS SEWER DISTRICT  
 Standard Details of Sewer Construction  
 D. P. W. 1992 SHEET 28

PRECAST CONCRETE STORMWATER STRUCTURES

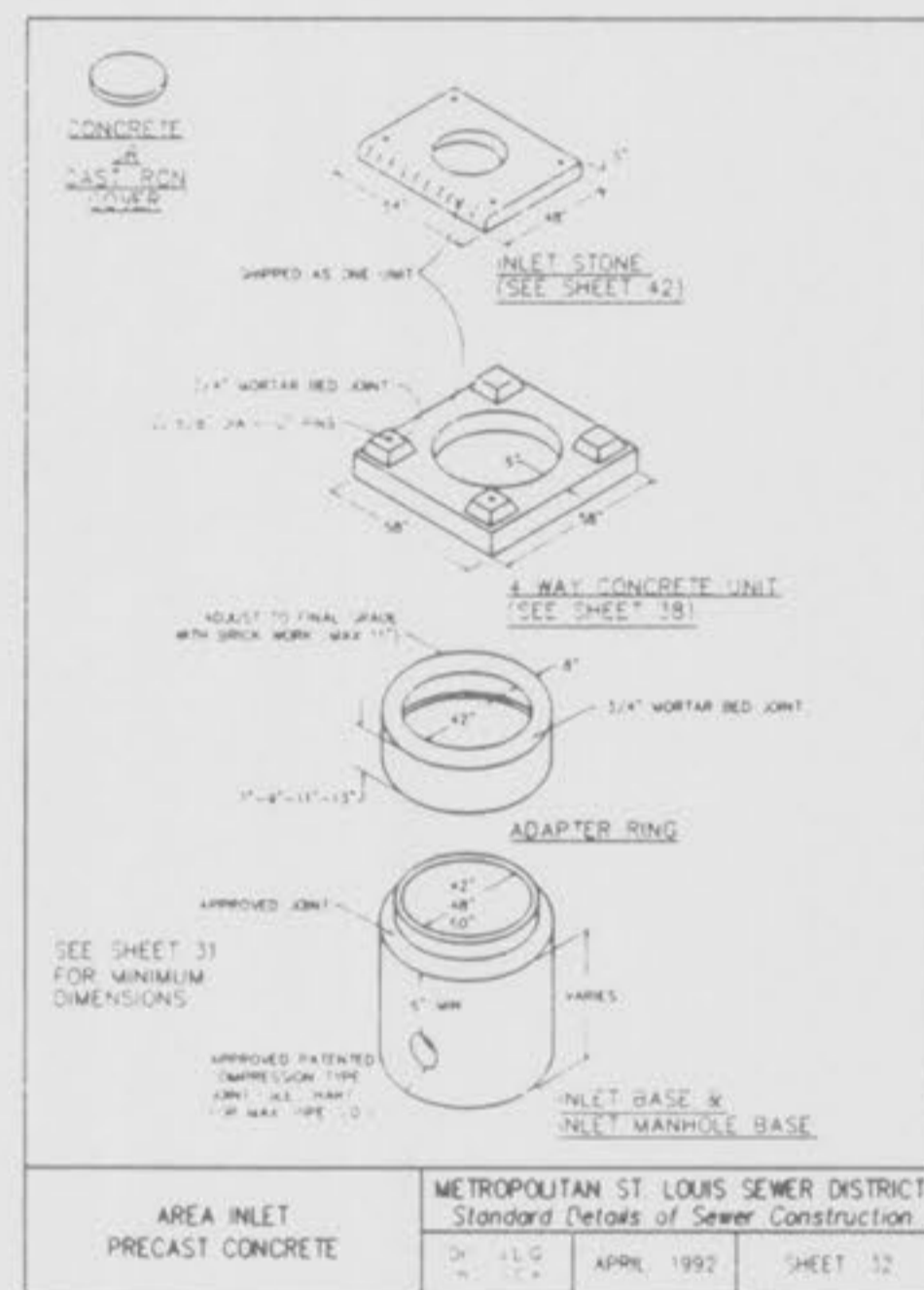
MINIMUM DISTANCE FLOWLINE TO TOP OF STONE OR GRATE

PIPE DIA. (NOMINAL)	AREA INLET	2 GATE INLET	SINGLE STREET INLET
12"	12" x 12"	12" x 12"	12" x 12"
15"	15" x 15"	15" x 15"	15" x 15"
18"	18" x 18"	18" x 18"	18" x 18"
24"	24" x 24"	24" x 24"	24" x 24"
30"	30" x 30"	30" x 30"	30" x 30"
36"	36" x 36"	36" x 36"	36" x 36"
42"	42" x 42"	42" x 42"	42" x 42"
48"	48" x 48"	48" x 48"	48" x 48"
54"	54" x 54"	54" x 54"	54" x 54"
60"	60" x 60"	60" x 60"	60" x 60"
66"	66" x 66"	66" x 66"	66" x 66"
72"	72" x 72"	72" x 72"	72" x 72"

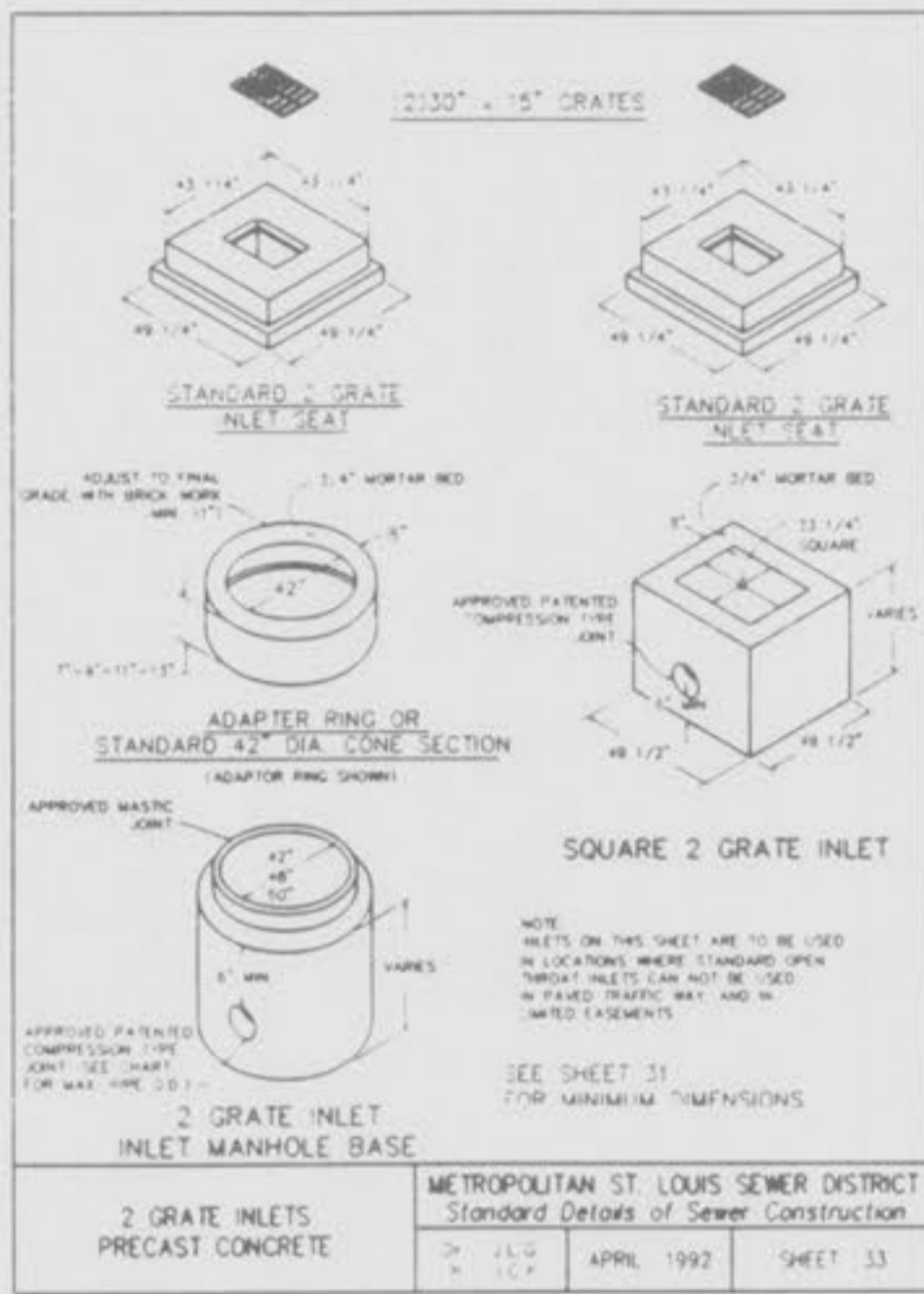
NOTE: 1. 48" DIA. BASE REQUIRES 1" HIGH TRANSITION SECTION TO 42" DIA. SIMILAR TO ADAPTER RING SHEET 32.  
 2. 60" DIA. BASE REQUIRES 1" HIGH CONCENTRIC REDUCER TRANSITION TO 42" DIA. SIMILAR TO ADAPTER RING SHEET 32.

SEE SHEET 32 FOR DETAILS. SEE SHEET 33 FOR DETAILS. SEE SHEET 34 FOR DETAILS.

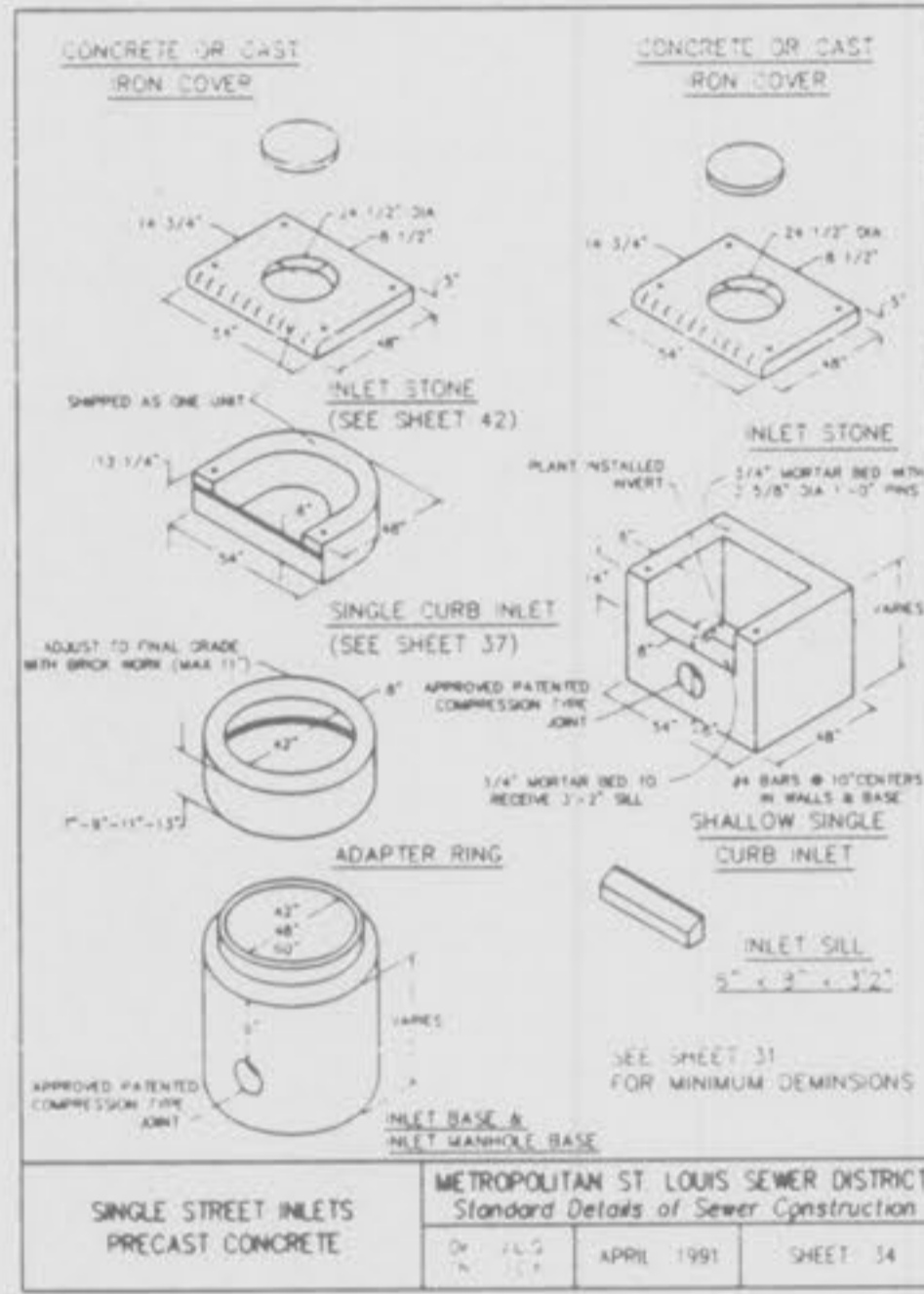
PRECAST CONCRETE STORMWATER STRUCTURES  
 METROPOLITAN ST. LOUIS SEWER DISTRICT  
 Standard Details of Sewer Construction  
 D. P. W. 1990 SHEET 31



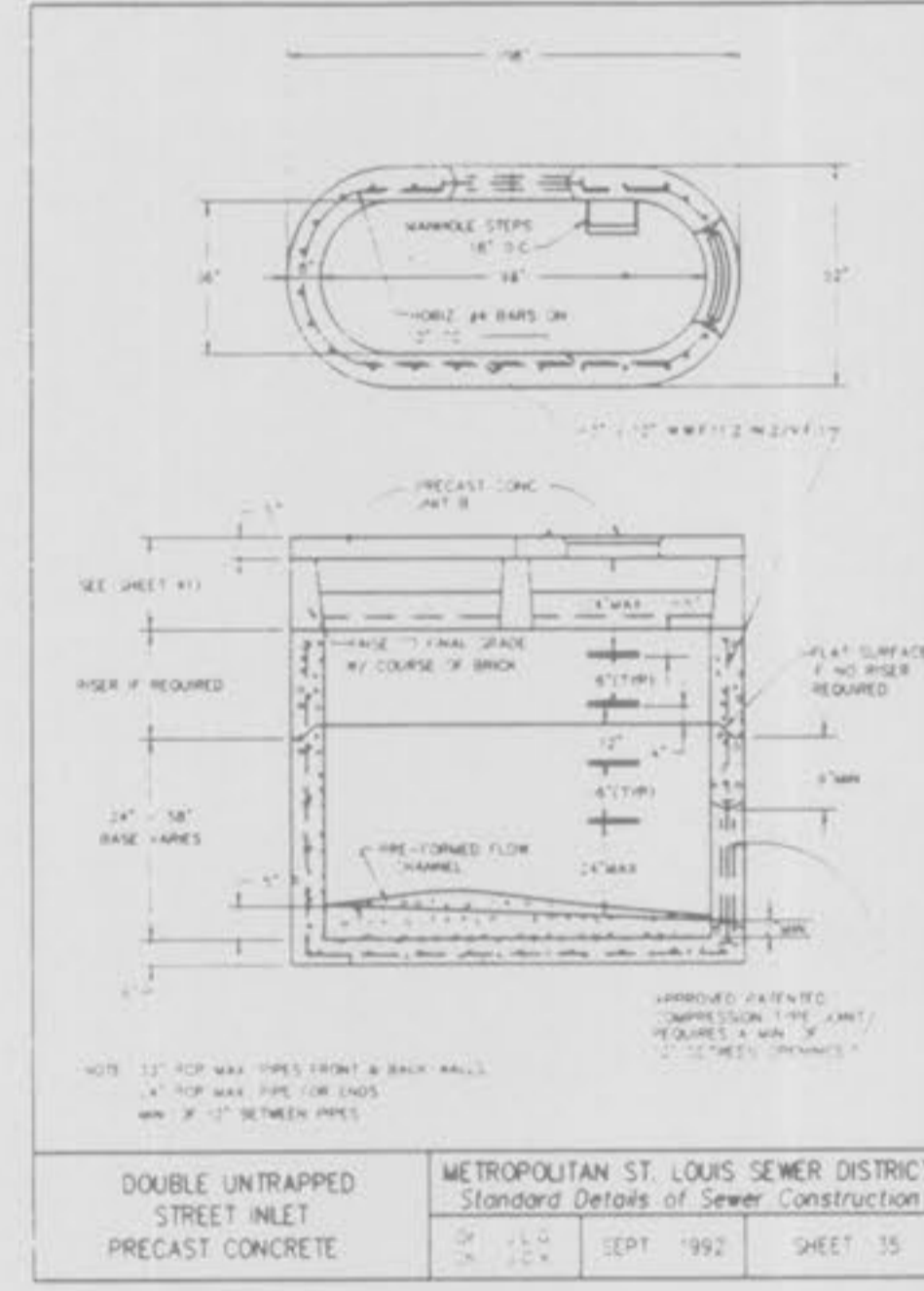
AREA INLET PRECAST CONCRETE  
 METROPOLITAN ST. LOUIS SEWER DISTRICT  
 Standard Details of Sewer Construction  
 D. P. W. 1992 SHEET 32



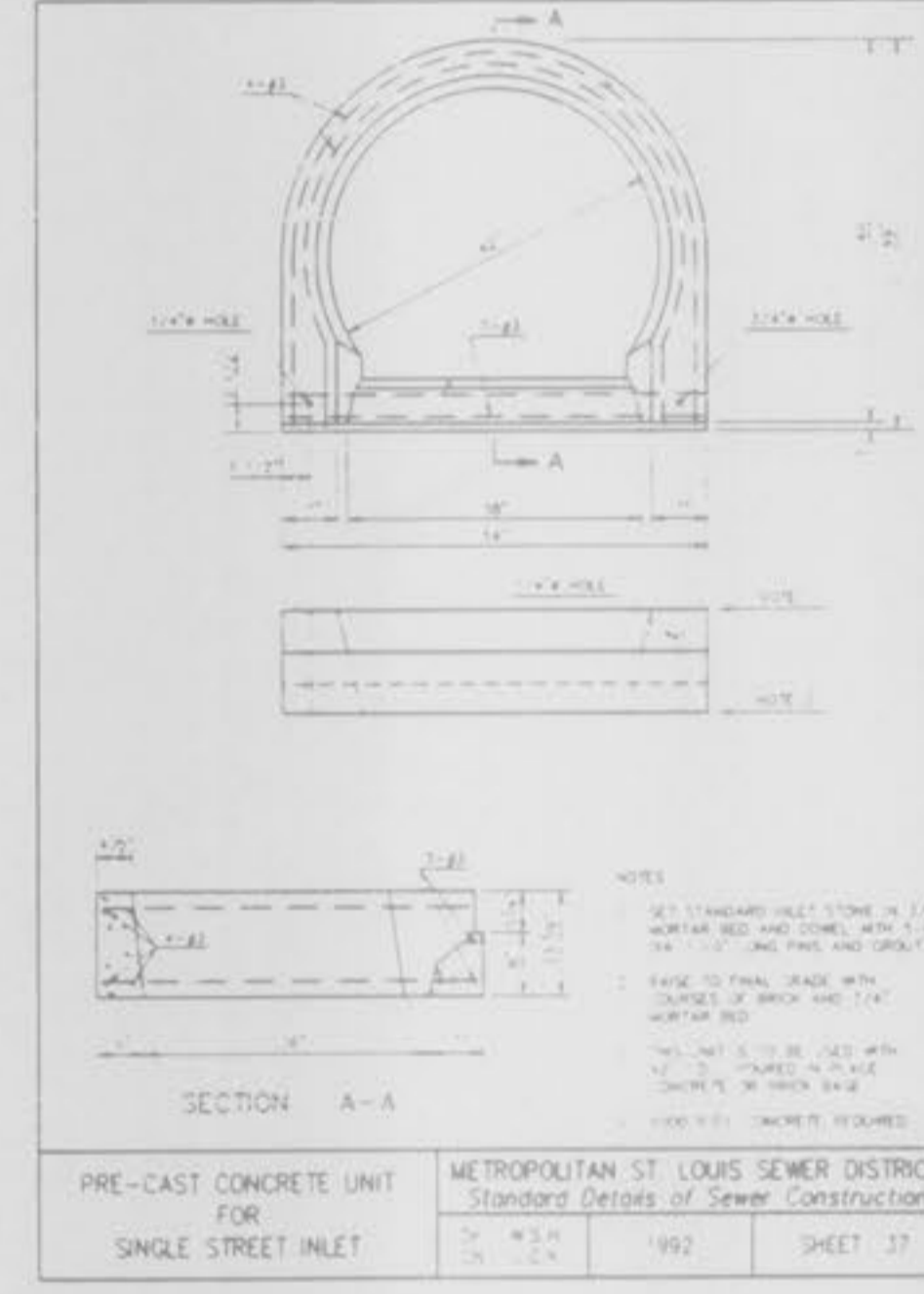
2 GATE INLETS PRECAST CONCRETE  
 METROPOLITAN ST. LOUIS SEWER DISTRICT  
 Standard Details of Sewer Construction  
 D. P. W. 1992 SHEET 33



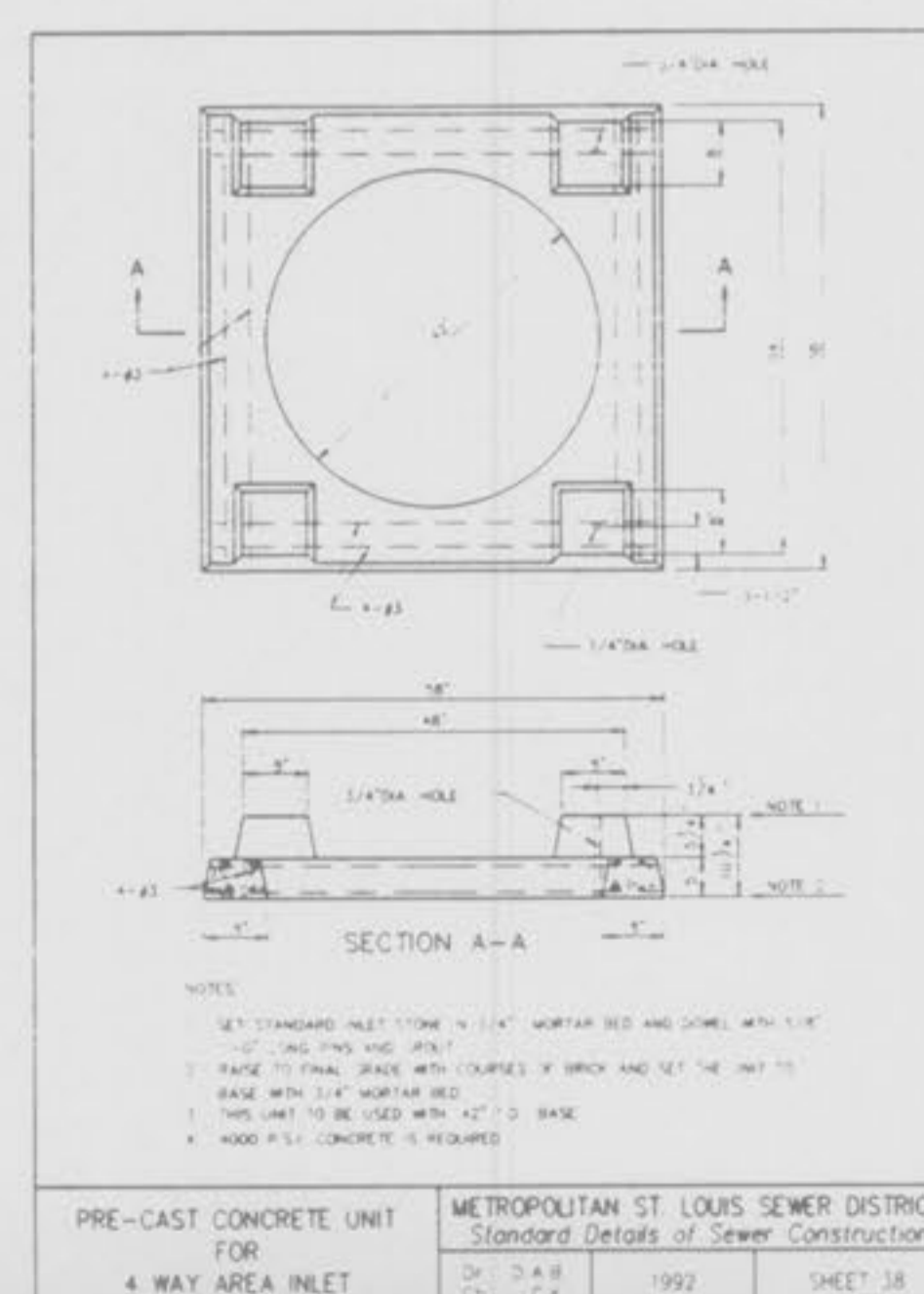
SINGLE STREET INLETS PRECAST CONCRETE  
 METROPOLITAN ST. LOUIS SEWER DISTRICT  
 Standard Details of Sewer Construction  
 D. P. W. 1991 SHEET 34



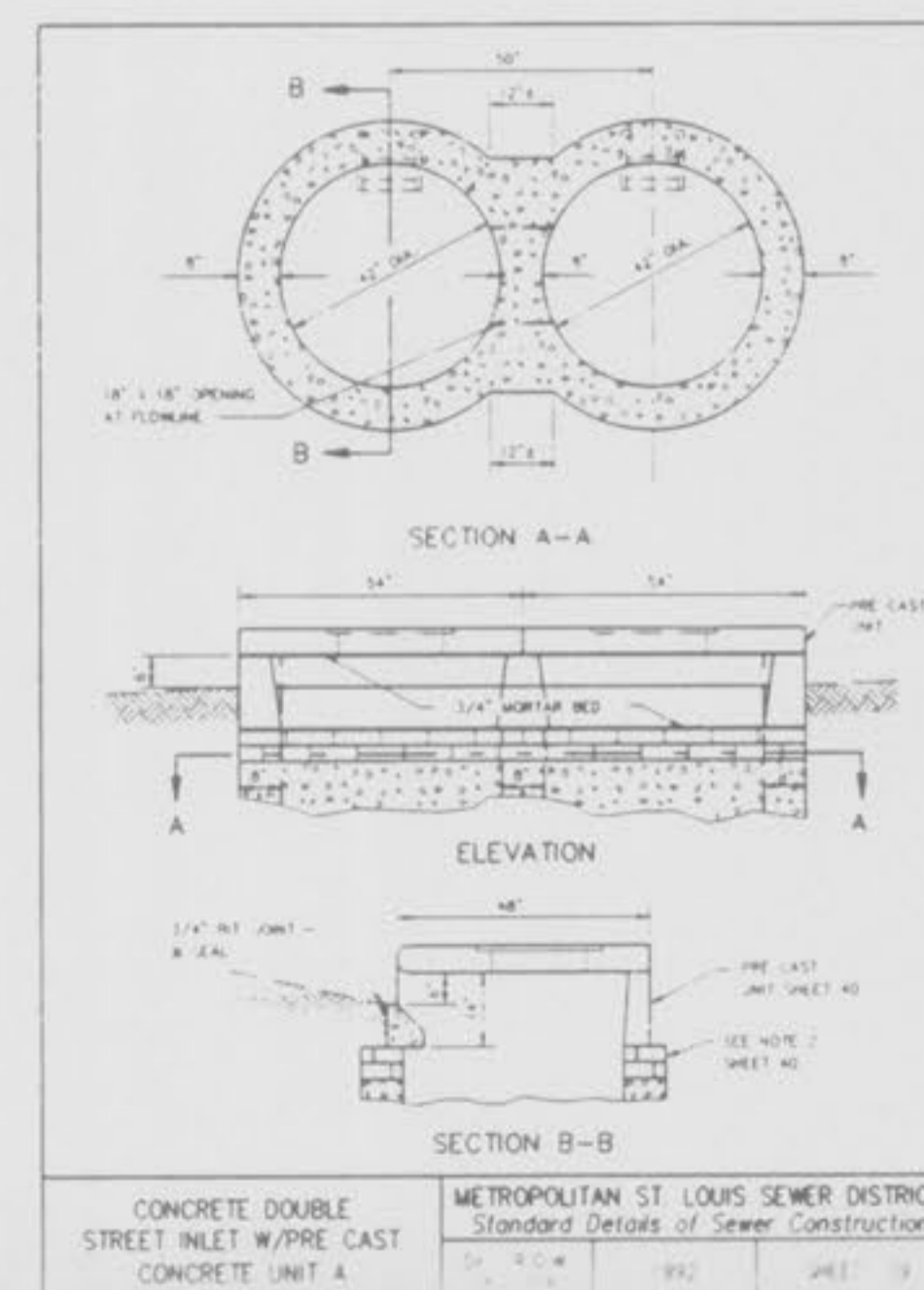
DOUBLE UNTRAPPED STREET INLET PRECAST CONCRETE  
 METROPOLITAN ST. LOUIS SEWER DISTRICT  
 Standard Details of Sewer Construction  
 D. P. W. 1992 SHEET 35



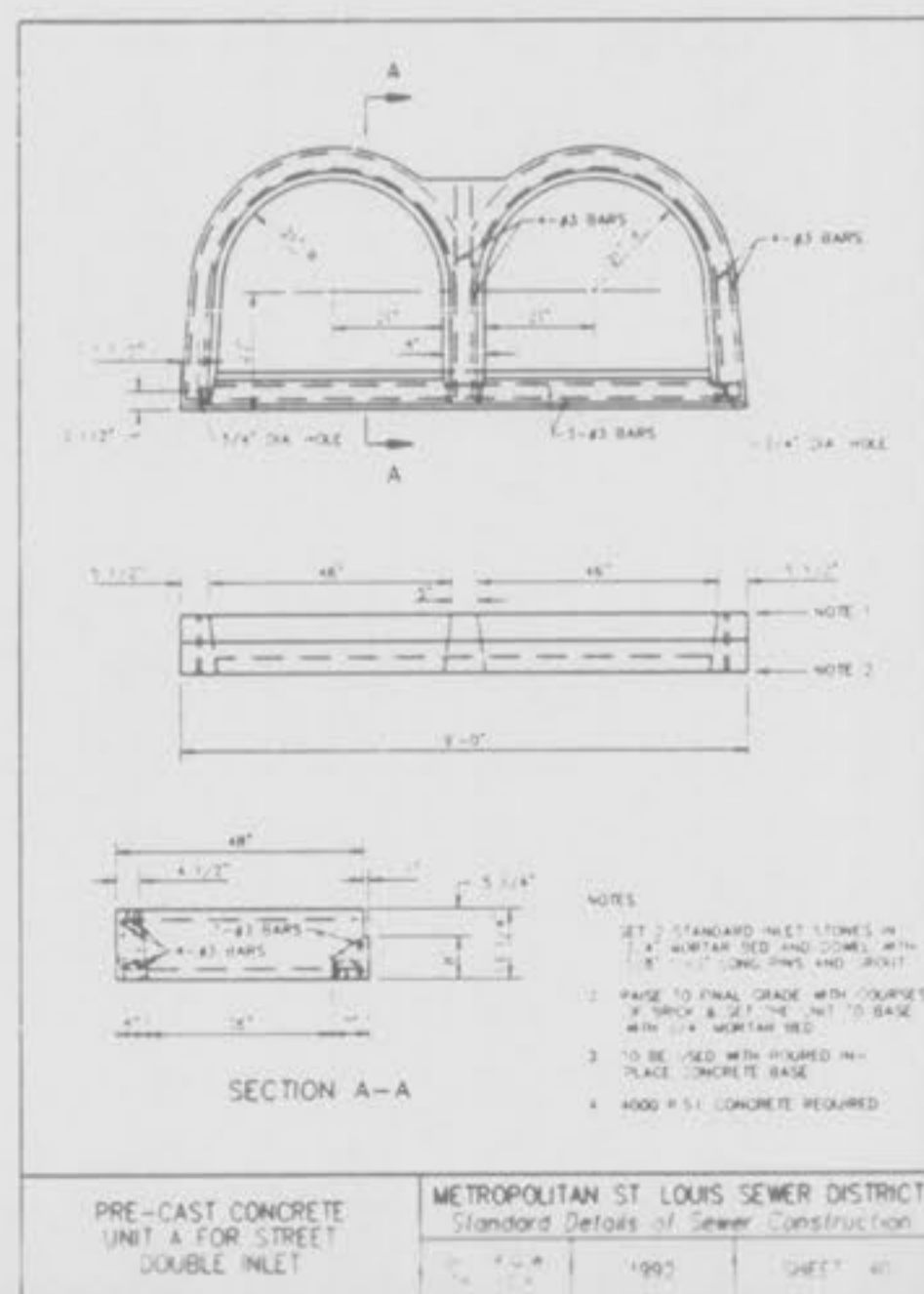
PRE-CAST CONCRETE UNIT FOR SINGLE STREET INLET  
 METROPOLITAN ST. LOUIS SEWER DISTRICT  
 Standard Details of Sewer Construction  
 D. P. W. 1992 SHEET 37



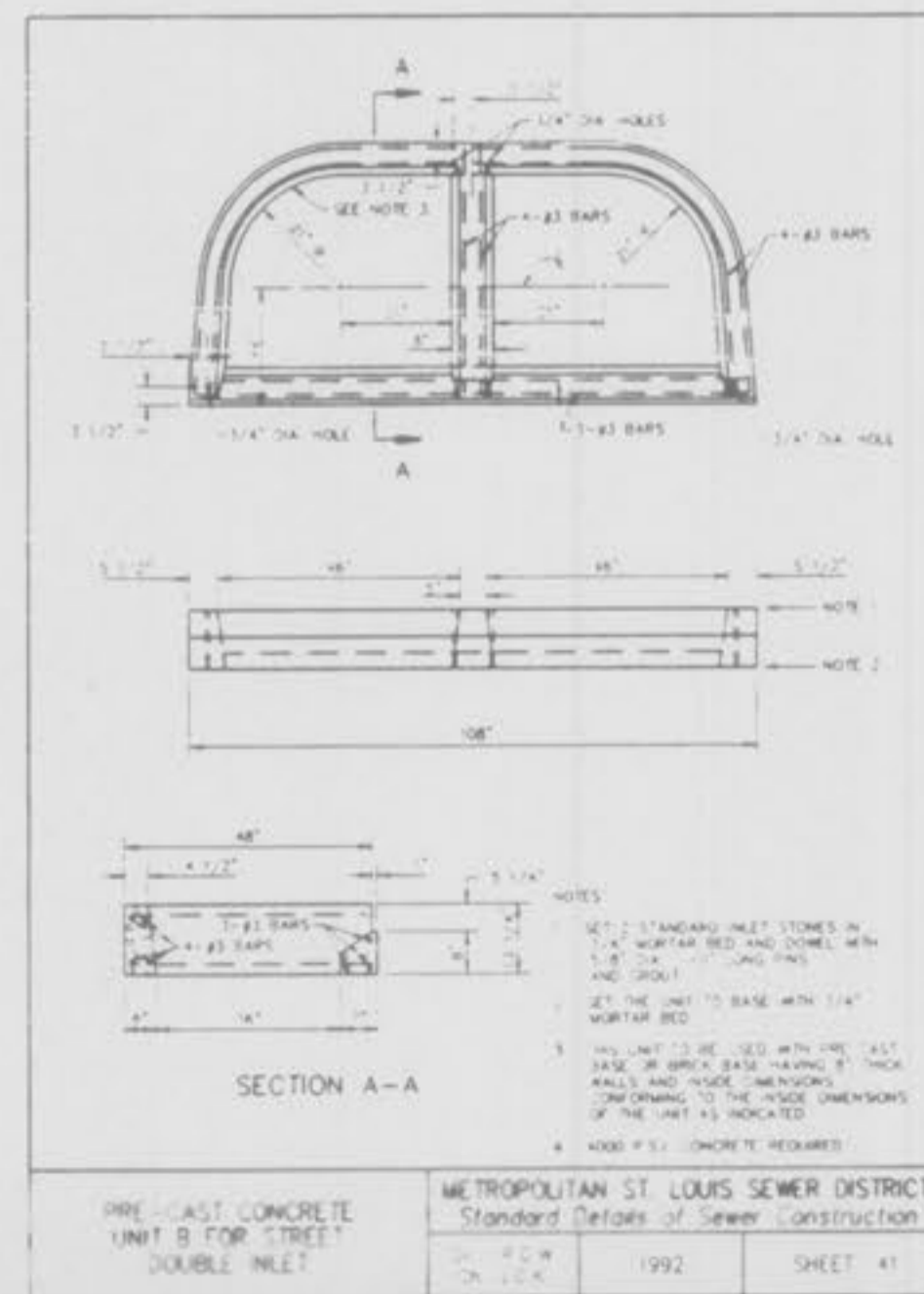
PRE-CAST CONCRETE UNIT FOR 4 WAY AREA INLET  
 METROPOLITAN ST. LOUIS SEWER DISTRICT  
 Standard Details of Sewer Construction  
 D. P. W. 1992 SHEET 38



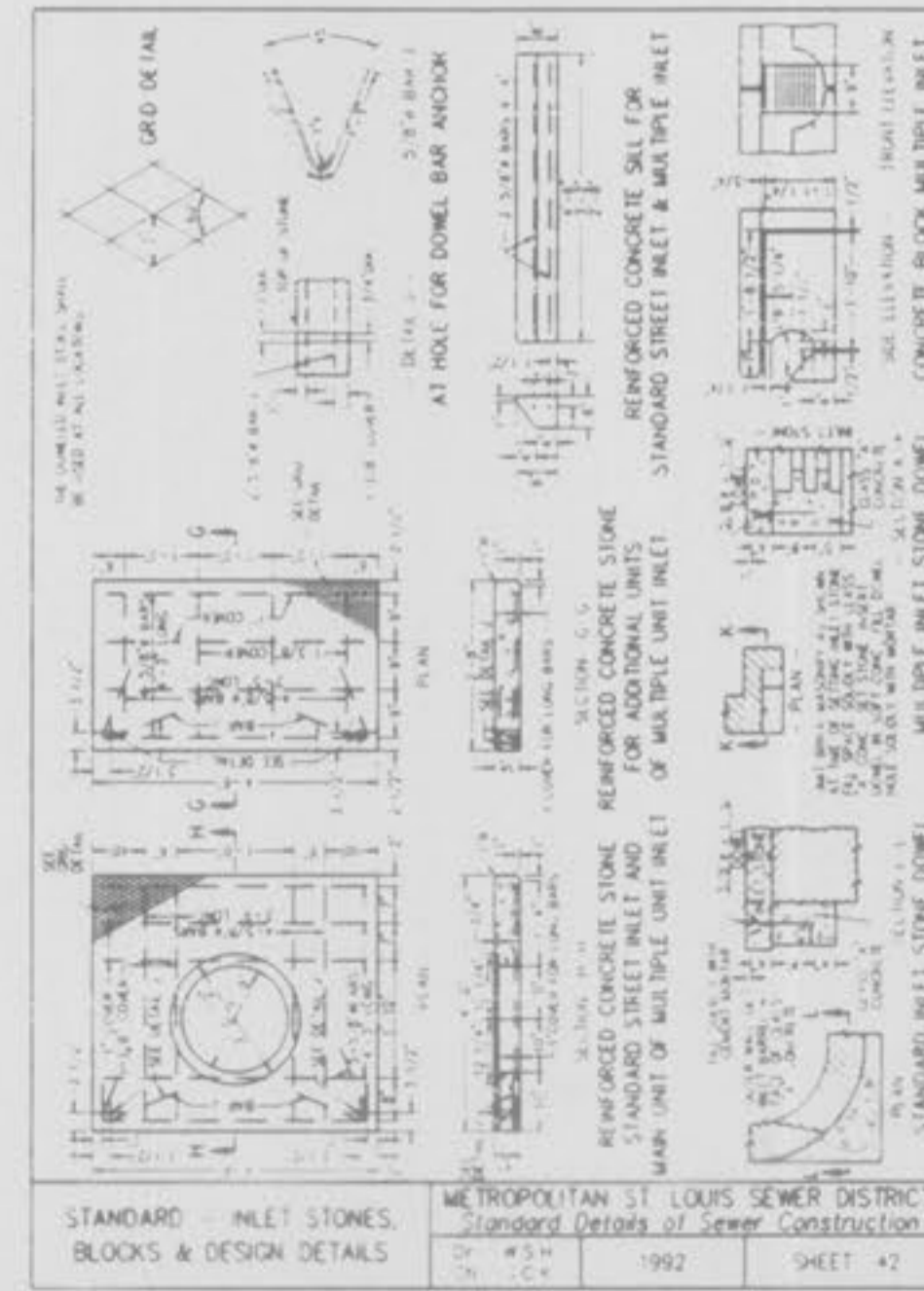
CONCRETE DOUBLE STREET INLET W/ PRE-CAST CONCRETE UNIT A  
 METROPOLITAN ST. LOUIS SEWER DISTRICT  
 Standard Details of Sewer Construction  
 D. P. W. 1992 SHEET 39



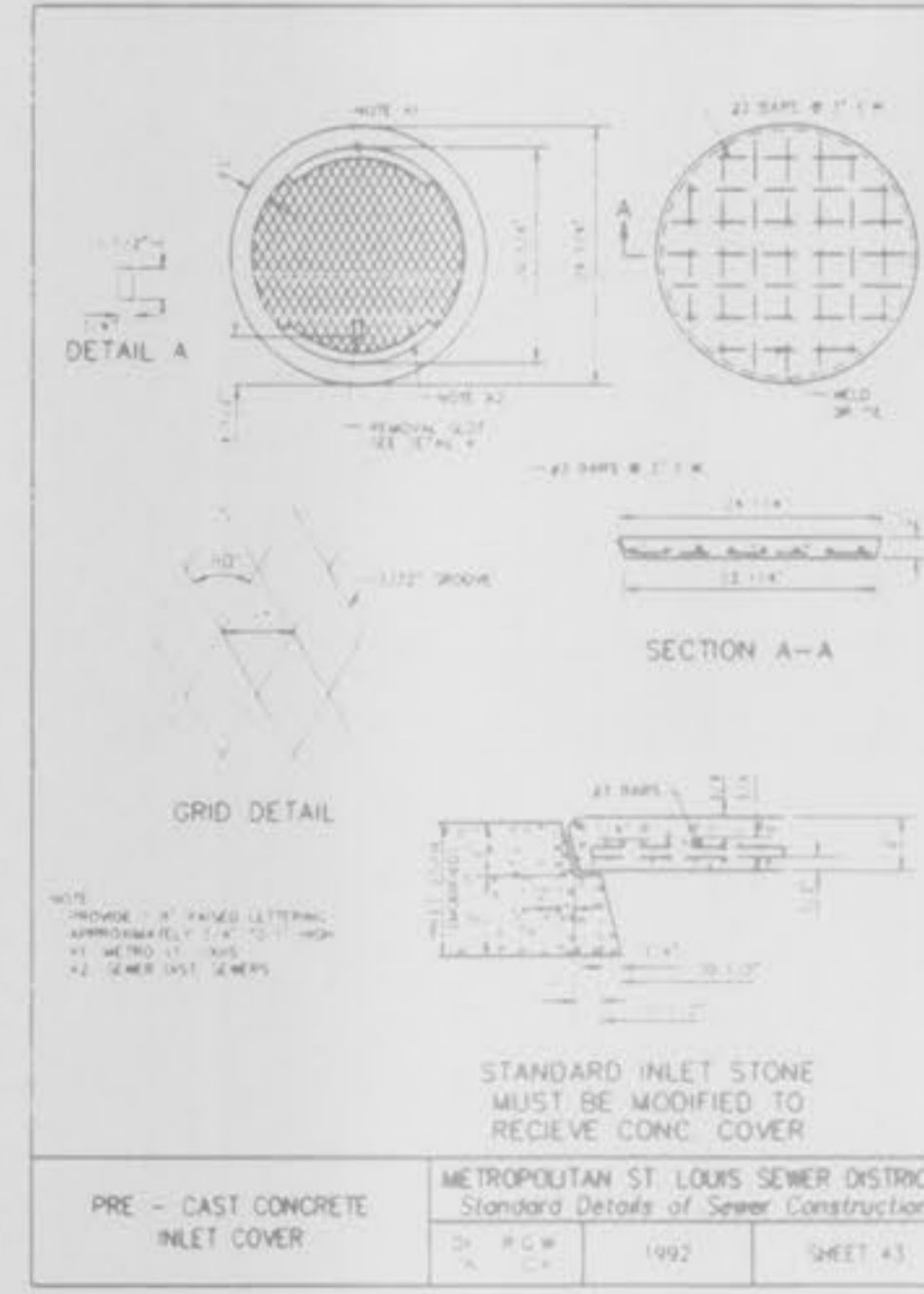
PRE-CAST CONCRETE UNIT B FOR STREET DOUBLE INLET  
 METROPOLITAN ST. LOUIS SEWER DISTRICT  
 Standard Details of Sewer Construction  
 D. P. W. 1992 SHEET 40



PRE-CAST CONCRETE UNIT B FOR STREET DOUBLE INLET  
 METROPOLITAN ST. LOUIS SEWER DISTRICT  
 Standard Details of Sewer Construction  
 D. P. W. 1992 SHEET 41



STANDARD INLET STONES, BLOCKS & DESIGN DETAILS  
 METROPOLITAN ST. LOUIS SEWER DISTRICT  
 Standard Details of Sewer Construction  
 D. P. W. 1992 SHEET 42



PRE-CAST CONCRETE INLET COVER  
 METROPOLITAN ST. LOUIS SEWER DISTRICT  
 Standard Details of Sewer Construction  
 D. P. W. 1992 SHEET 43