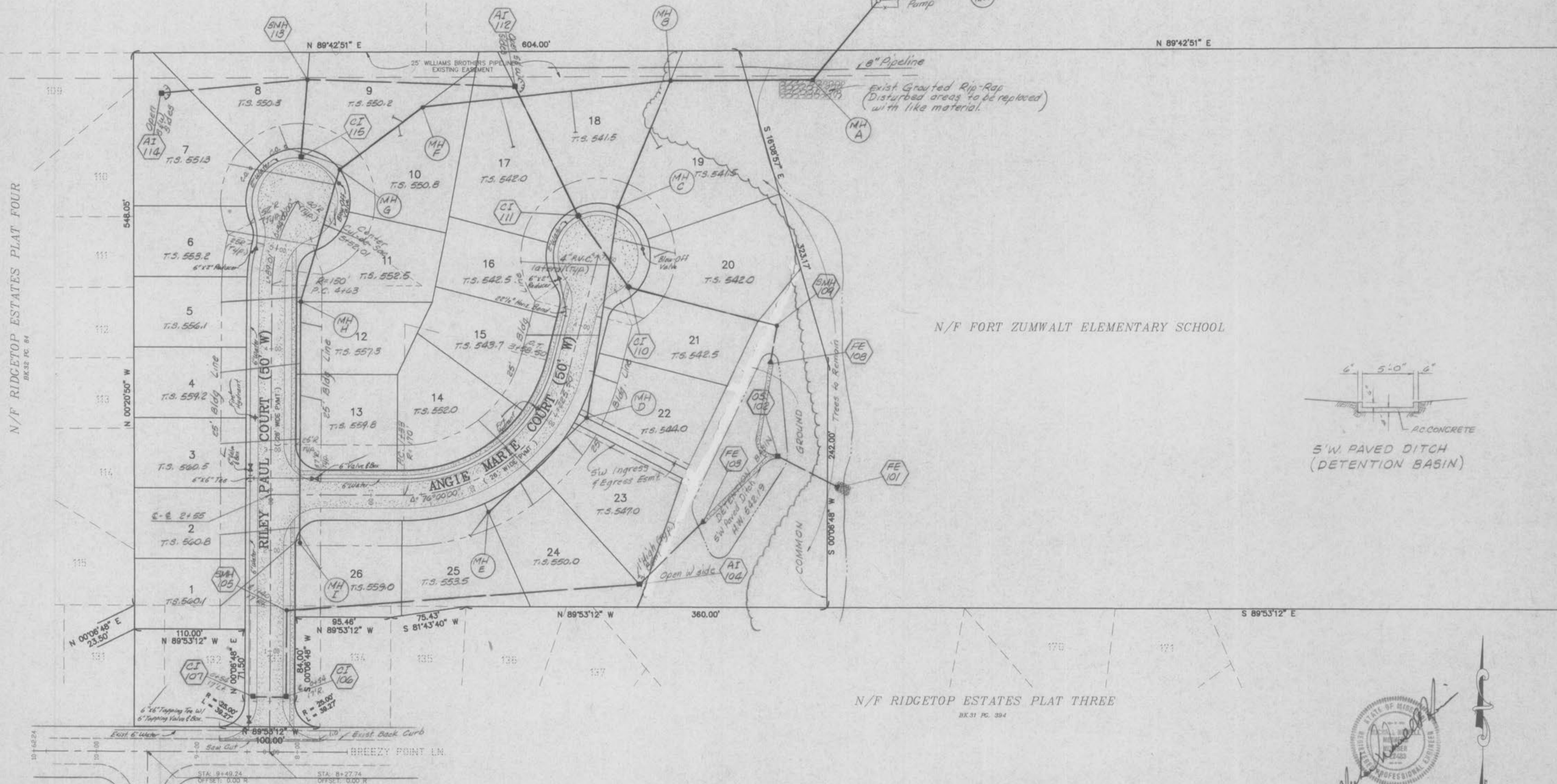


N/F WOODCREST PLAT TWO
BK 17 PG. 19 & 20

N/F BRANDYWINE ESTATES
BK 29 PG. 8



N/F FORT ZUMWALT ELEMENTARY SCHOOL

N/F RIDGETOP ESTATES PLAT THREE
BK 31 PG. 394



The underground utilities shown herein were plotted from available information and do not necessarily reflect the actual existence, nonexistence, size, type, number, or location of these or other utilities. The general contractor shall be responsible for verifying the actual location of all underground utilities, shown or not shown, and said utilities shall be located in the field prior to any grading, excavation, or construction of improvements. These provisions shall in no way absolve any party from complying with the Underground Facility Safety and Damage Prevention Act, Chapter 319, RSMo.

SCALE=1"=50'
(profiles only)
11-20-95 Sanitary, Storm & Water As-builts Added

REVISED	SHEET 2 OF 11
	ST. CHARLES ENGINEERING & SURVEYING 801 S. FIFTH STREET, SUITE 202 ST. CHARLES, MO 63301 TEL: (314) 947-0607 FAX: (314) 947-2448
ORDER NO.	DATE
-	12/5/94