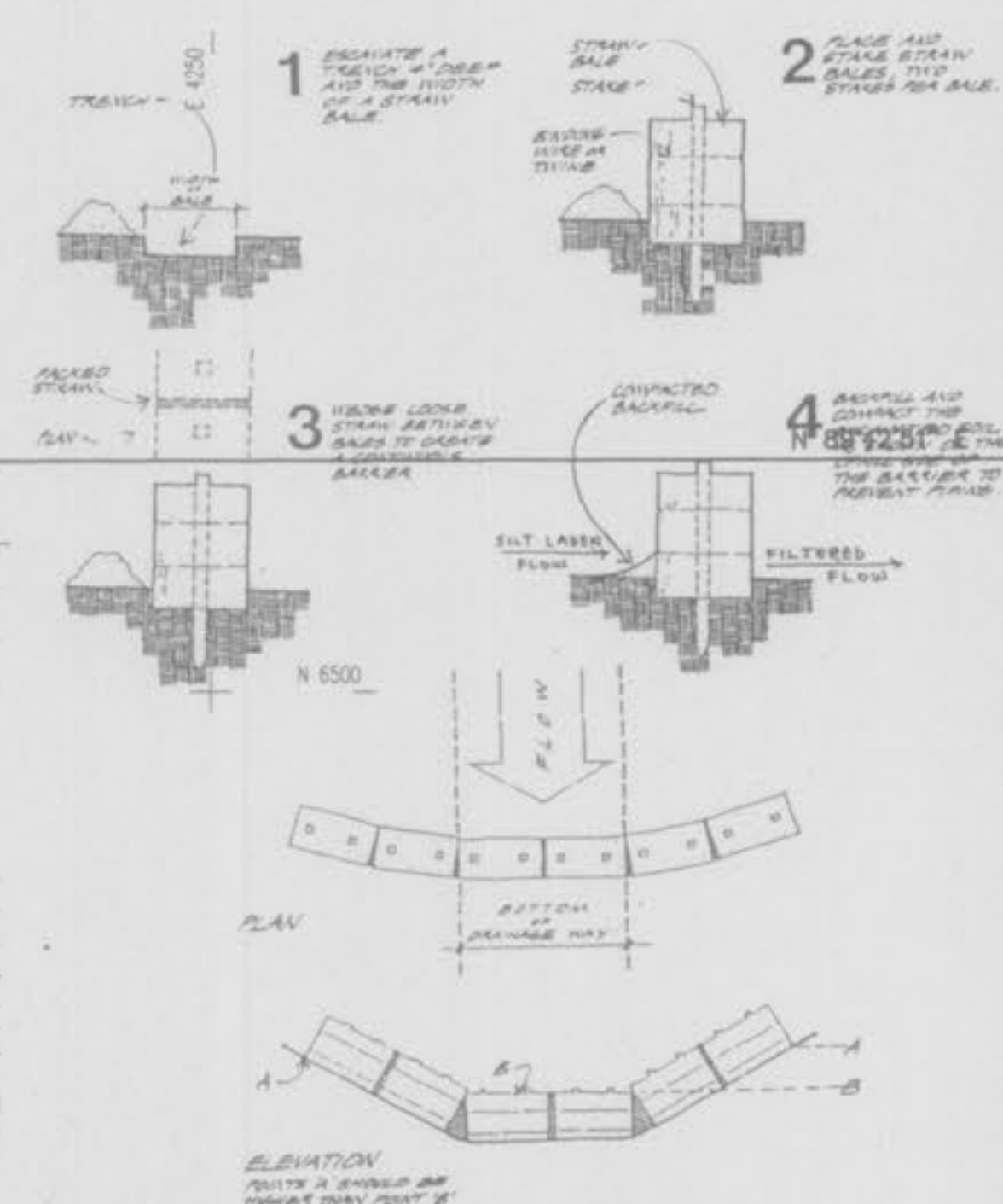


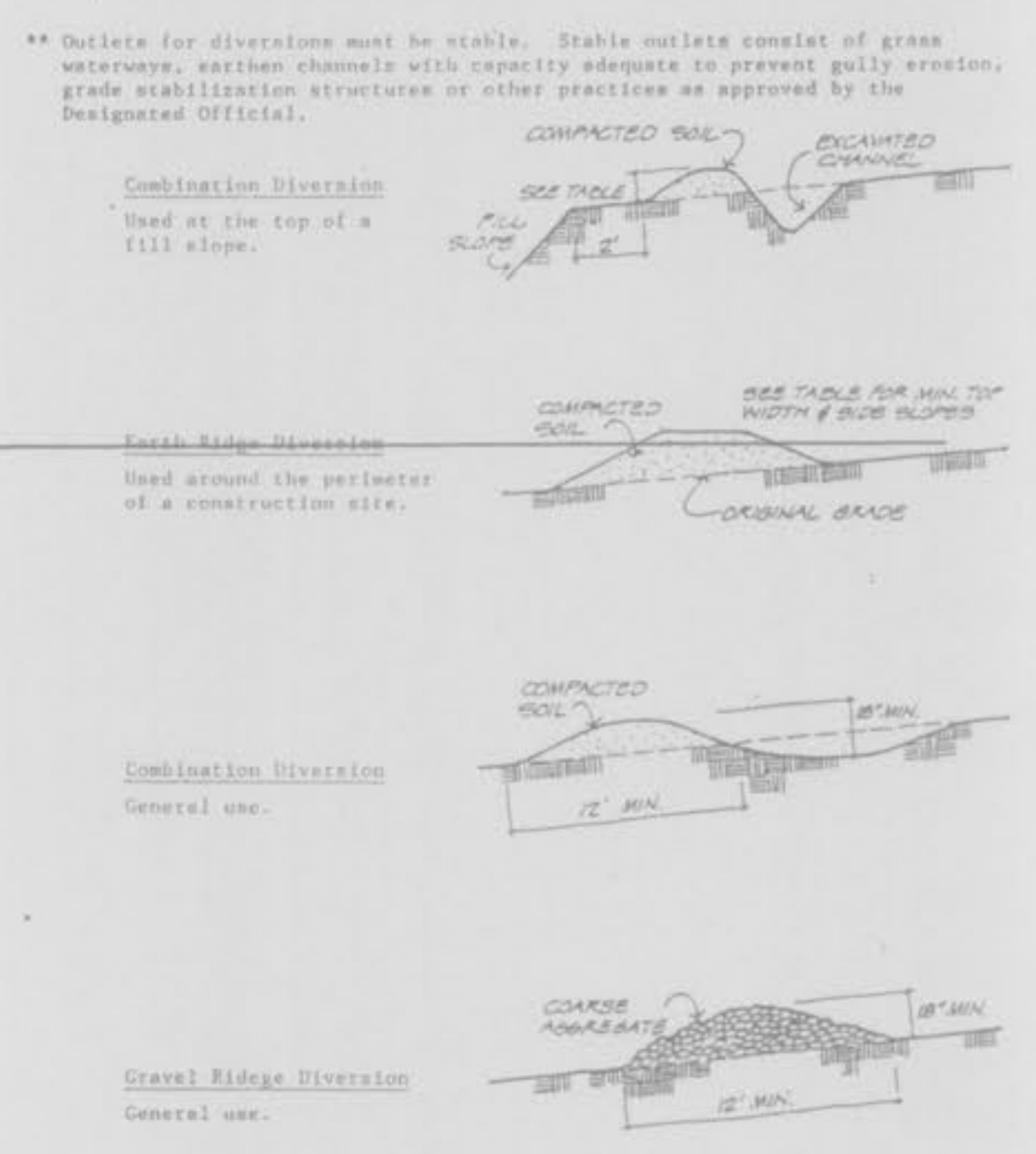
**RIDGETOP ESTATES
ADDITION
GRADING PLAN
1995 94-717**

**STRAW BALE BARRIERS
For Urban Development Sites
APPENDIX C**



Placement and Construction of a Straw Bale Barrier

**DIVERSIONS
For Urban Development Sites
APPENDIX B**



** Outlets for diversions must be stable. Stable outlets consist of grass waterways, earthen channels with capacity adequate to prevent gully erosion, grade stabilization structures or other practices as approved by the Designated Official.

Combination Diversion
Used at the top of a fill slope.

Earth Ridge Diversion
Used around the perimeter of a construction site.

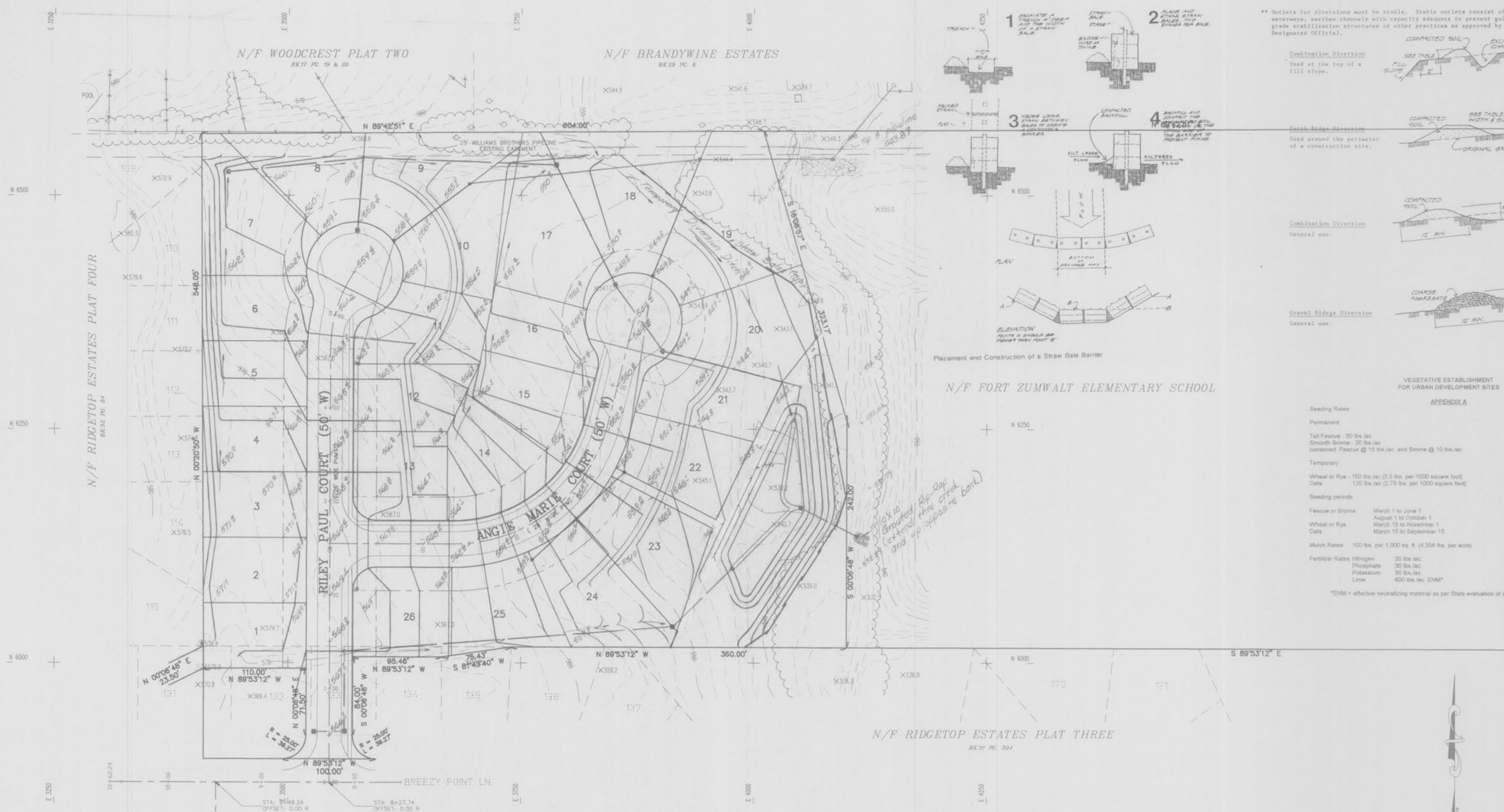
Combination Diversion
General use.

Gravel Ridge Diversion
General use.

N/F FORT ZUMWALT ELEMENTARY SCHOOL

**VEGETATIVE ESTABLISHMENT
FOR URBAN DEVELOPMENT SITES
APPENDIX A**

Seeding Rates:	
Permanent:	
Tall Fescue	30 lbs./ac.
Smooth Brome	20 lbs./ac.
Combined Fescue @ 15 lbs./ac. and Brome @ 10 lbs./ac.	
Temporary:	
Wheat or Rye	150 lbs./ac. (3.5 lbs. per 1000 square foot)
Oats	120 lbs./ac. (2.75 lbs. per 1000 square foot)
Seeding periods:	
Fescue or Brome	March 1 to June 1 August 1 to October 1
Wheat or Rye	March 15 to November 1
Oats	March 15 to September 15
Mulch Rates: 100 lbs. per 1,000 sq. ft. (4,356 lbs. per acre)	
Fertilizer Rates:	
Nitrogen	30 lbs./ac.
Phosphate	30 lbs./ac.
Potassium	30 lbs./ac.
Lime	600 lbs./ac. ENM*
*ENM = effective neutralizing material as per State evaluation of quarried rock.	



SCALE=1"=50'