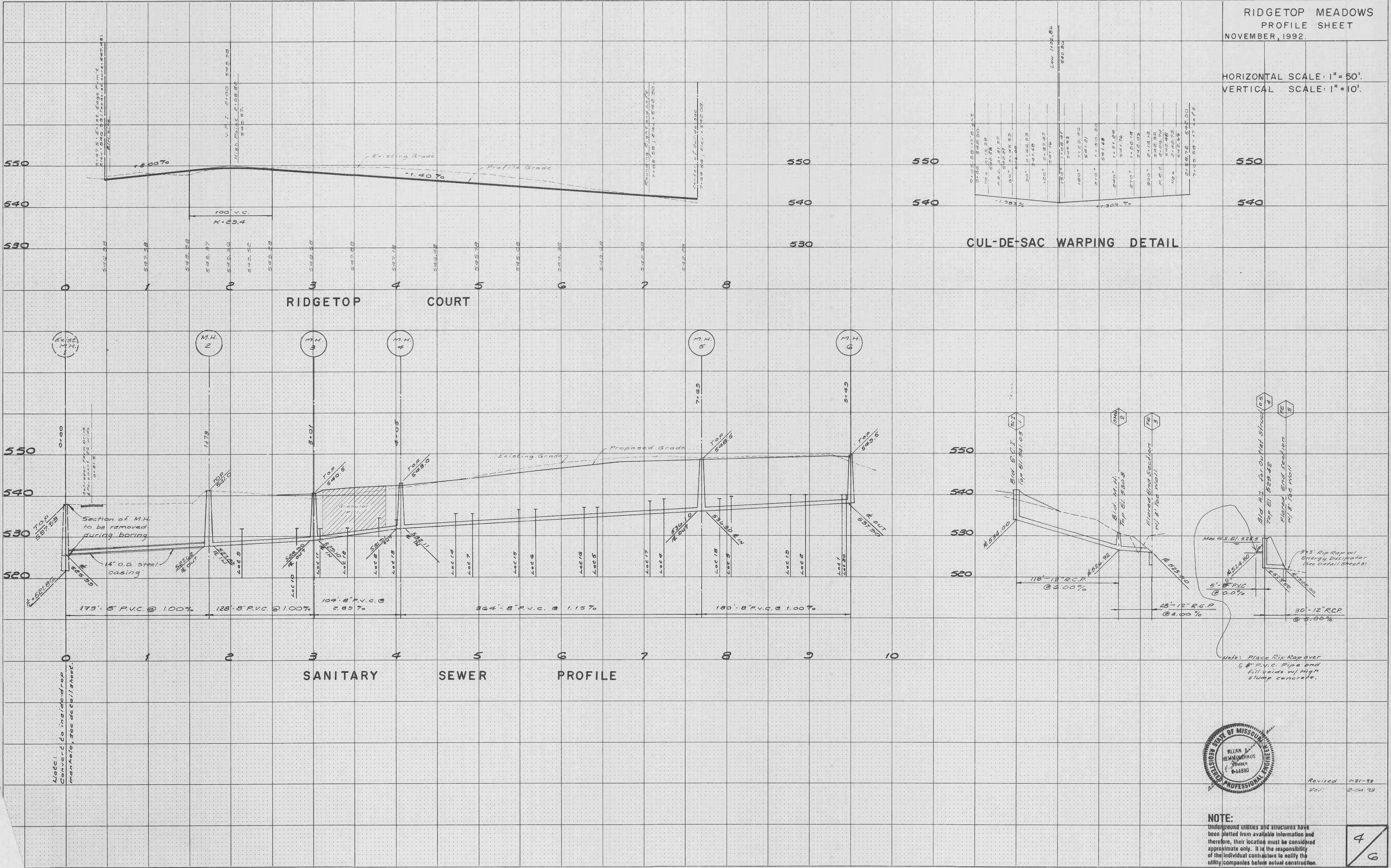


HORIZONTAL SCALE: 1" = 50'  
VERTICAL SCALE: 1" = 10'

FINAL SURVEY  
DATE: \_\_\_\_\_  
BY: \_\_\_\_\_  
SURVEYED: \_\_\_\_\_  
PLOTTED: \_\_\_\_\_  
NOTE BOOK: \_\_\_\_\_  
NO. \_\_\_\_\_  
AREAS CHECKED: \_\_\_\_\_

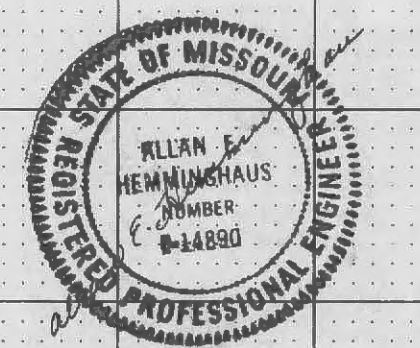
ORIGINAL SURVEY  
DATE: \_\_\_\_\_  
BY: \_\_\_\_\_  
SURVEYED: \_\_\_\_\_  
PLOTTED: \_\_\_\_\_  
NOTE BOOK: \_\_\_\_\_  
NO. \_\_\_\_\_  
AREAS CHECKED: \_\_\_\_\_



CUL-DE-SAC WARPING DETAIL

Note: Convert to inside drop manhole, see detail sheet.

Note: Place Rip Rap over 6\"/>



Revised 1-21-93  
REV: P.C.A. 93

NOTE:  
Underground utilities and structures have been plotted from available information and therefore, their location must be considered approximate only. It is the responsibility of the individual contractor to notify the utility companies before actual construction.

4  
6