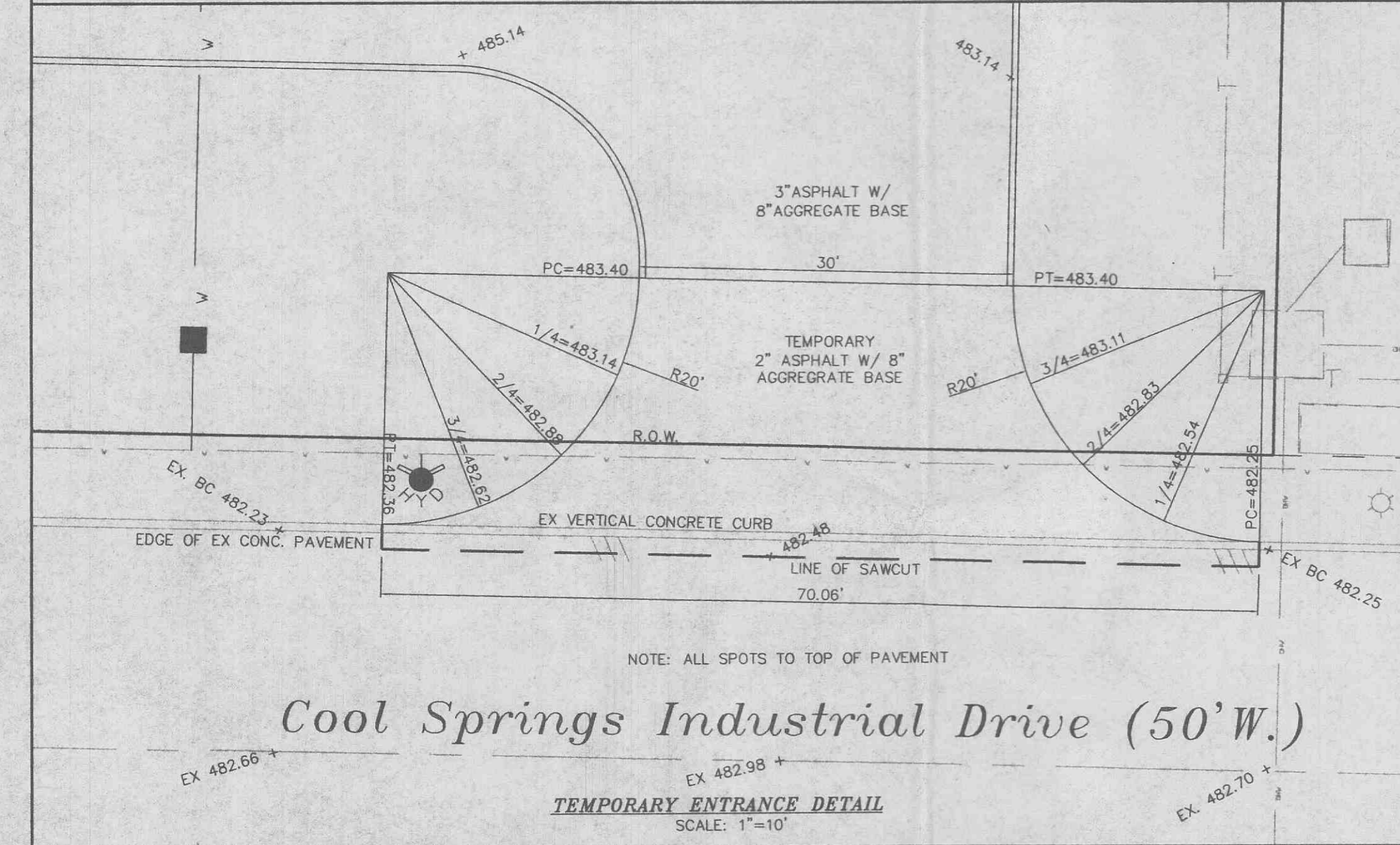
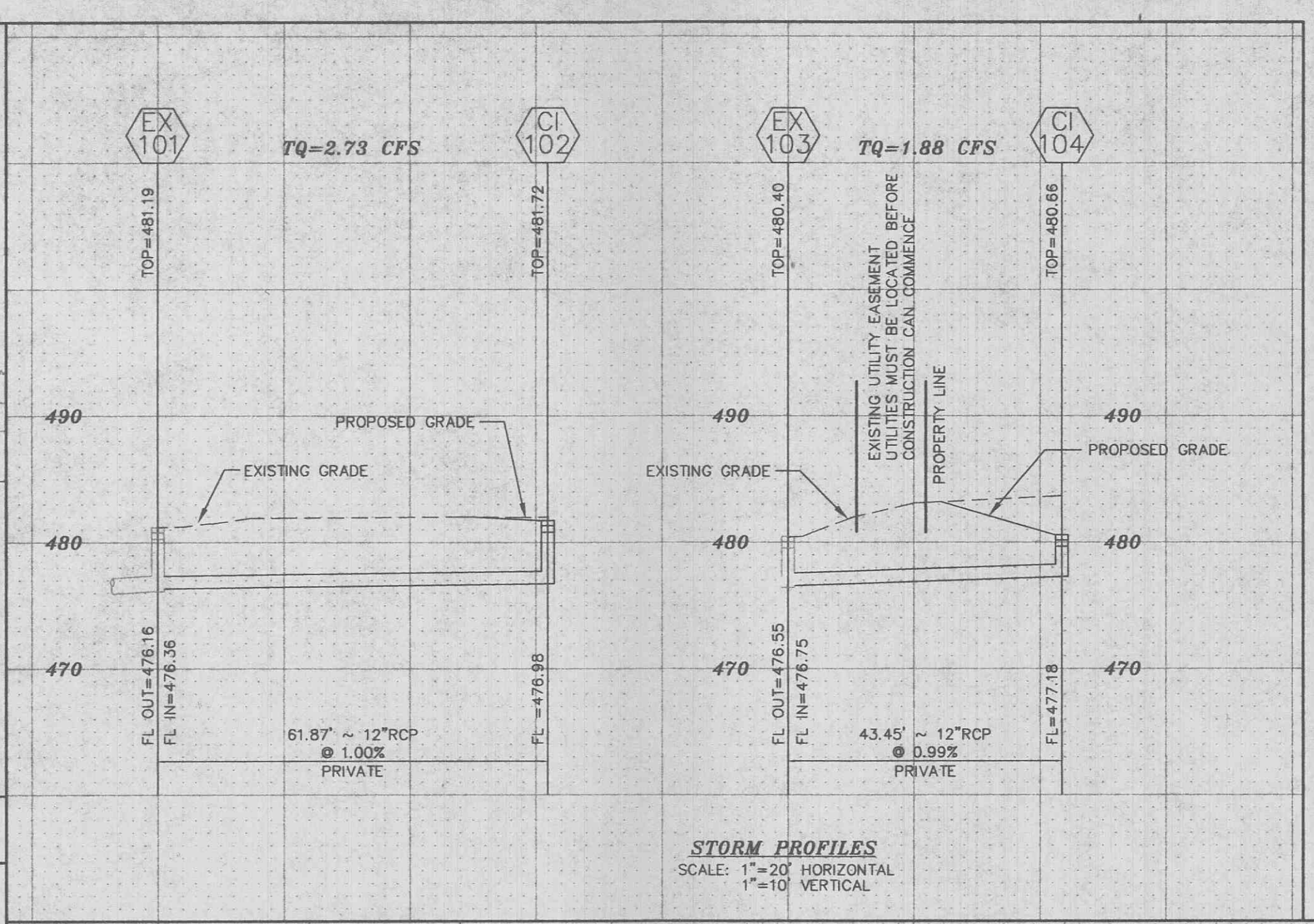


Cool Springs Industrial Drive (50' W.)
FUTURE ENTRANCE DETAIL (BUILT)
SCALE: 1"=10'



Cool Springs Industrial Drive (50' W.)
TEMPORARY ENTRANCE DETAIL
SCALE: 1"=10'



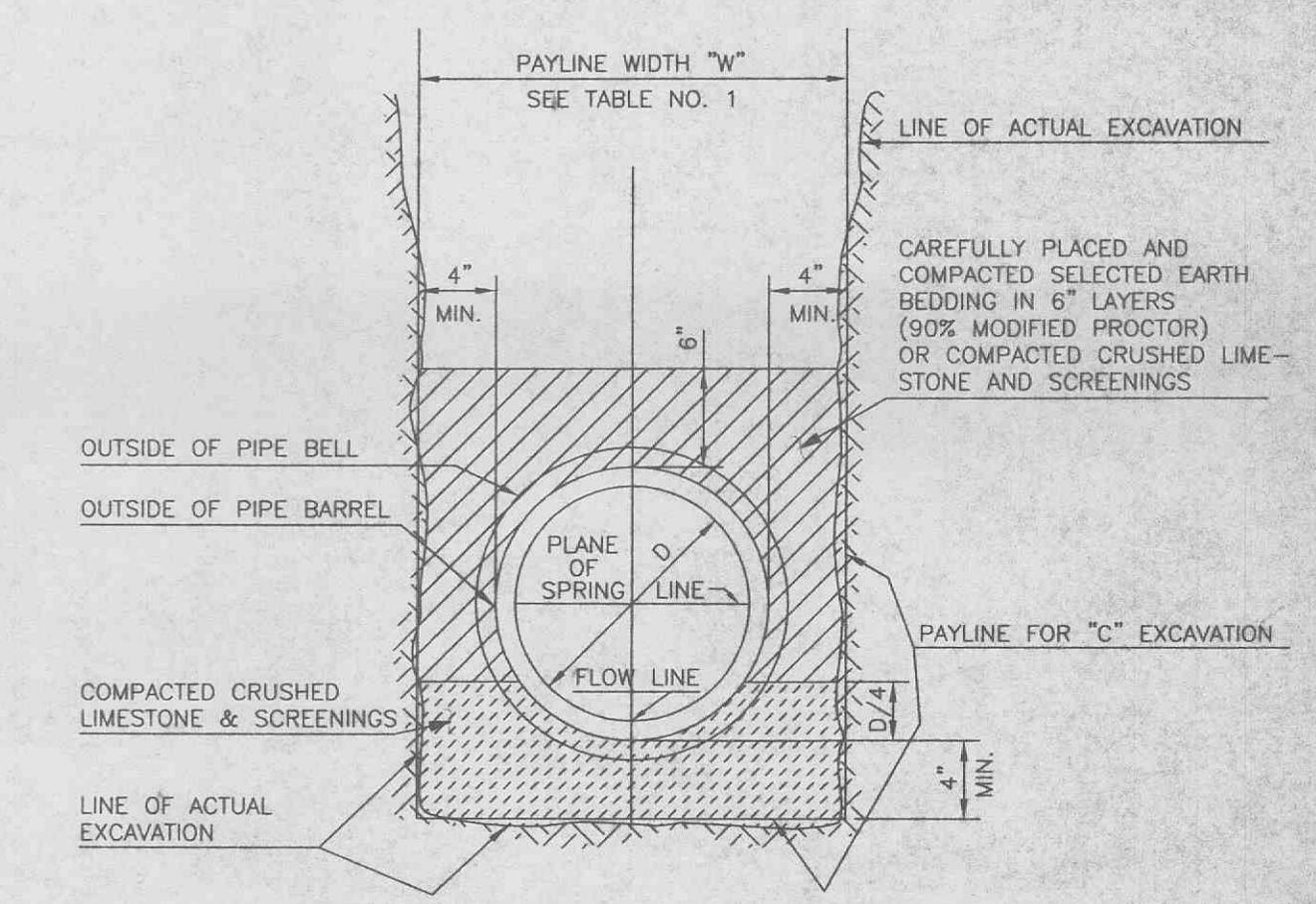
STORM PROFILES
SCALE: 1"=20' HORIZONTAL
1"=10' VERTICAL

RIVER CITY DRYWALL
8-30-02
11947

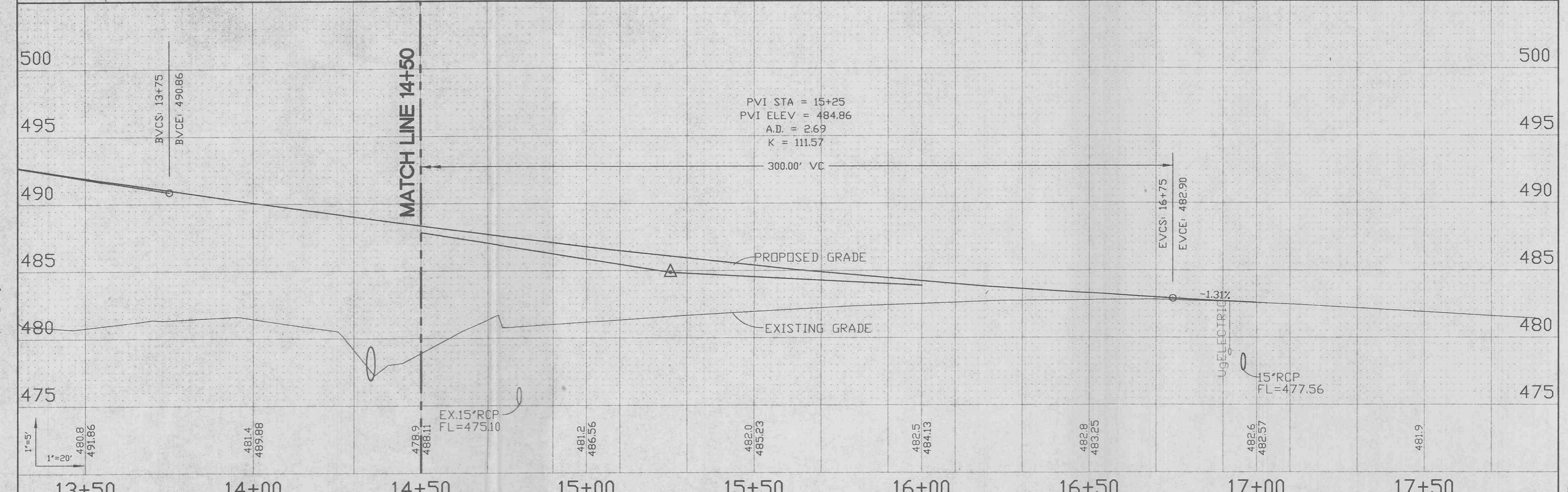
UPP STR	LOW STR	DIA	UPPER FL LN	LOWER FL LN	PS	ST EL	UPPER HY GR	DEPTH HY EL	UPPER HY EL	LOWER HY EL	HYR GRADE	FR HEAD	VEL HEAD	JUNC LOSS	TURN LOSS	STR LOSS	INL CAP	DR AREA	PI	Q	TO	PIPE CAP	REMARKS
EX 105	EX 104	43.45	12	477.16	476.75	0.99	480.86	2.67	477.99	477.75	.00280	0.12	2.38	0.09	0.12	0.00	0.00	0.00	0.00	1.88	3.54	2	HW=475.12
EX 104	EX 103	43.45	12	476.55	474.52	1.74	480.40	3.19	477.21	475.12	.01170	1.64	4.91	0.36	0.45	0.00	0.00	0.00	0.00	3.98	4.70	2	HW=475.12
CI 102	EX 101	61.87	12	476.88	476.36	1.00	481.72	3.75	477.97	477.36	.00580	0.36	3.48	0.19	0.25	0.00	0.00	0.00	0.00	2.73	3.57	3	
EX 101	EX 100	44.59	15	476.16	474.83	2.98	481.19	4.92	478.27	476.08	.00240	0.11	2.57	0.10	-0.05	0.13	0.00	0.00	0.00	3.18	11.16	4	HW=476.08

ROUND PIPE				HORIZONTAL ELLIPTICAL PIPE			
Inside Diameter of Pipe (Inches)	"W" Payline Width of Trench (Inches)	"W" Payline Width of Trench (Feet)	Pay-volumes cu. ft. per ft. Concrete Encasement	Inside Diameter of Pipe (Inches)	"W" Payline Width of Trench (Inches)	"W" Payline Width of Trench (Feet)	Pay-volumes cu. ft. per ft. Concrete Encasement
4	28	2.33	3.20				
6	28	2.33	3.46				
8	28	2.33	3.70				
10	28	2.33	3.86				
12	28	2.33	3.98				

TABLE NO. 1
PAYLINE WIDTHS OF TRENCH AND
PAY-QUANTITIES OF CONCRETE

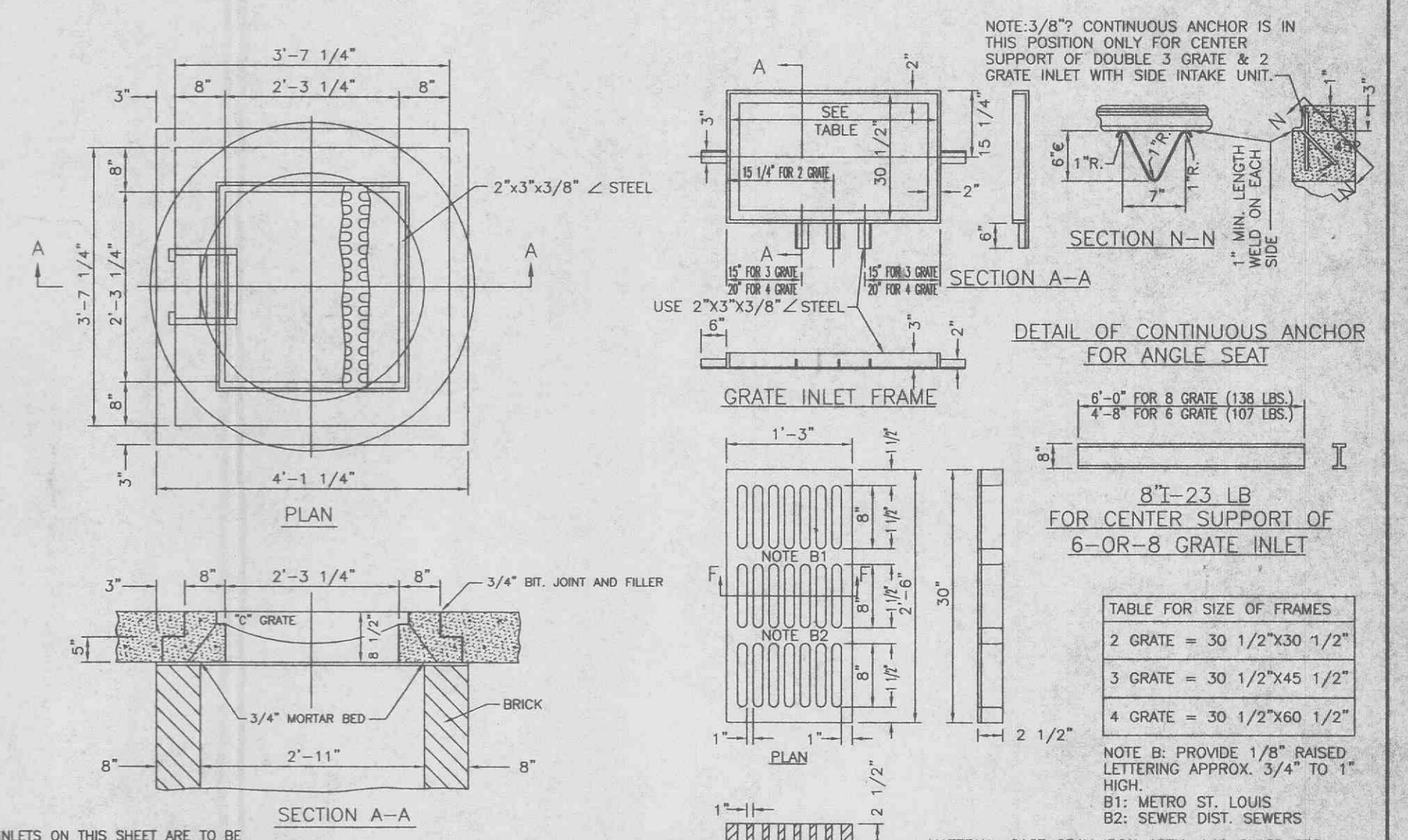


PIPE BEDDING CLASS "C"
(FOR ALL PIPE EXCEPT
REINFORCED CONCRETE PIPE)



COOL SPRINGS INDUSTRIAL DRIVE PROFILE

DESIGNED BY THE CITY OF O'FALLON



2 GRATE INLET

TABLE FOR SIZE OF FRAMES

2 GRATE = 30 1/2" x 30 1/2"
3 GRATE = 30 1/2" x 45 1/2"
4 GRATE = 30 1/2" x 60 1/2"

NOTE B: PROVIDE 1/8" RAISED LETTERING APPROX. 3/4" TO 1" HIGH
B1: METRO ST. LOUIS
B2: SEWER DIST. SEWERS

MATERIAL: CAST GRAY IRON ASTM A48 CLASS 35B
COATING SPEC. PER MSD SPEC. (0-01" COLD TAR)
CAST IRON GRATE
(NF-41164 OR EQUAL)

DETAILS OF INLET
FRAME AND GRATES