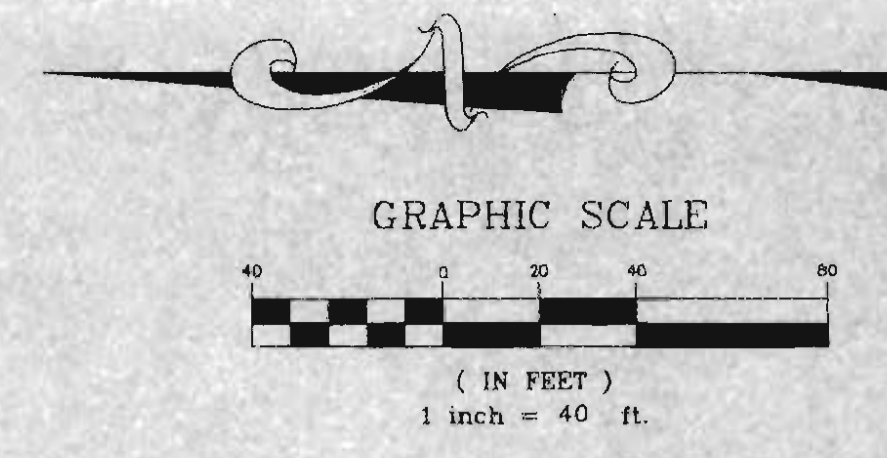
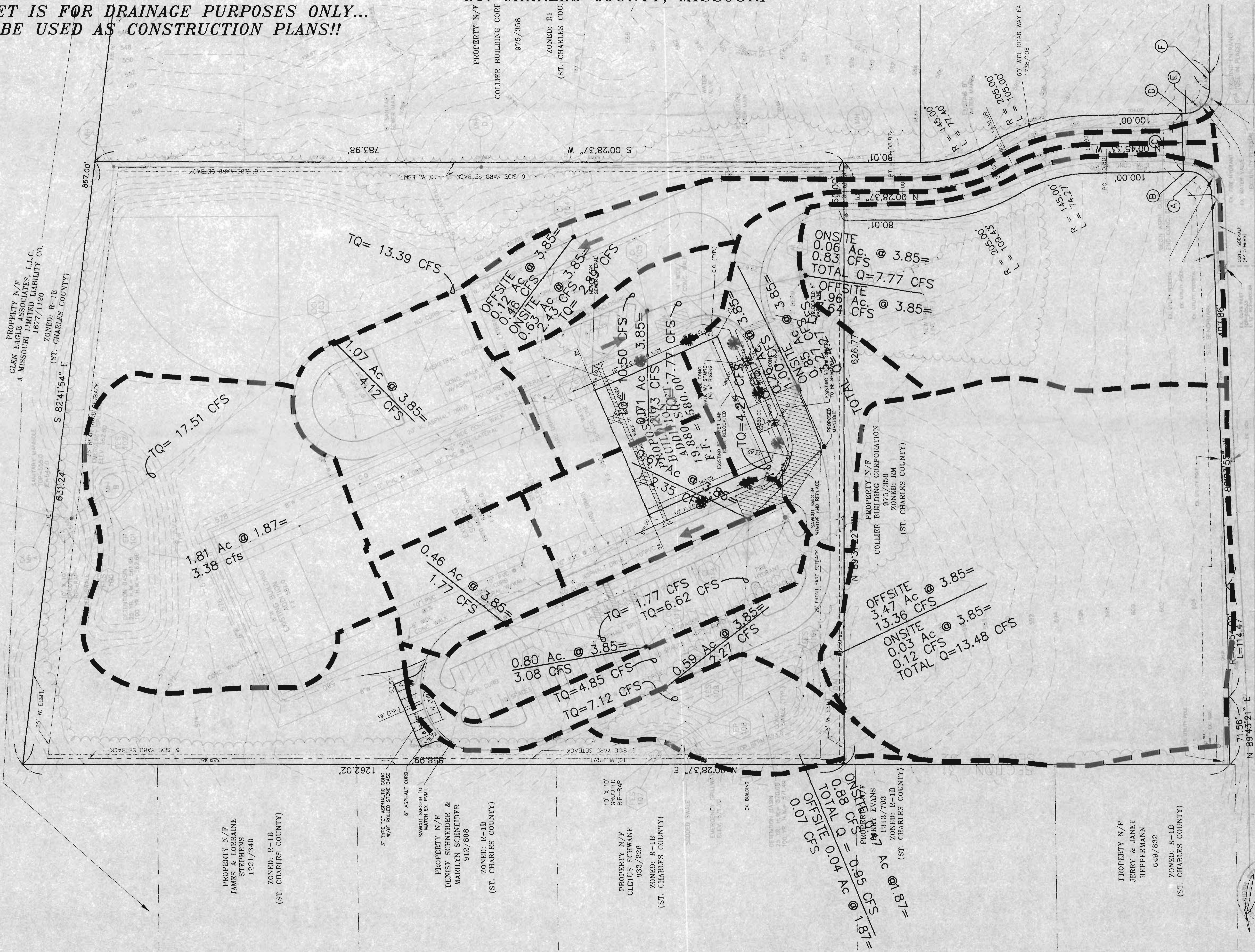


ORIGINAL DRAINAGE AREA MAP FOR  
**ROCK CREEK ELEMENTARY SCHOOL**  
 A TRACT OF LAND BEING PART OF FRACTIONAL SECTION 32,  
 TOWNSHIP 47 NORTH, RANGE 3 EAST OF  
 THE FIFTH PRINCIPAL MERIDIAN  
 ST. CHARLES COUNTY, MISSOURI



THIS SHEET IS FOR DRAINAGE PURPOSES ONLY...  
 NOT TO BE USED AS CONSTRUCTION PLANS!!



**DMA Design**  
 A Division of The DMA Corporation  
 architects engineers construction managers  
 2299 South Spoeede Warrenton, MO 63383

PHASE III ADDITION TO  
 ROCK CREEK ELEMENTARY SCHOOL  
 FORT ZUMWALT SCHOOL DISTRICT

ISSUED FOR:  
 100% OWNERS REVIEW  
 JANUARY 20, 1999

Proj No. 98061  
 Date: 12-2-98  
 Plot:  
 DRAINAGE AREA  
 MAP  
**C3**