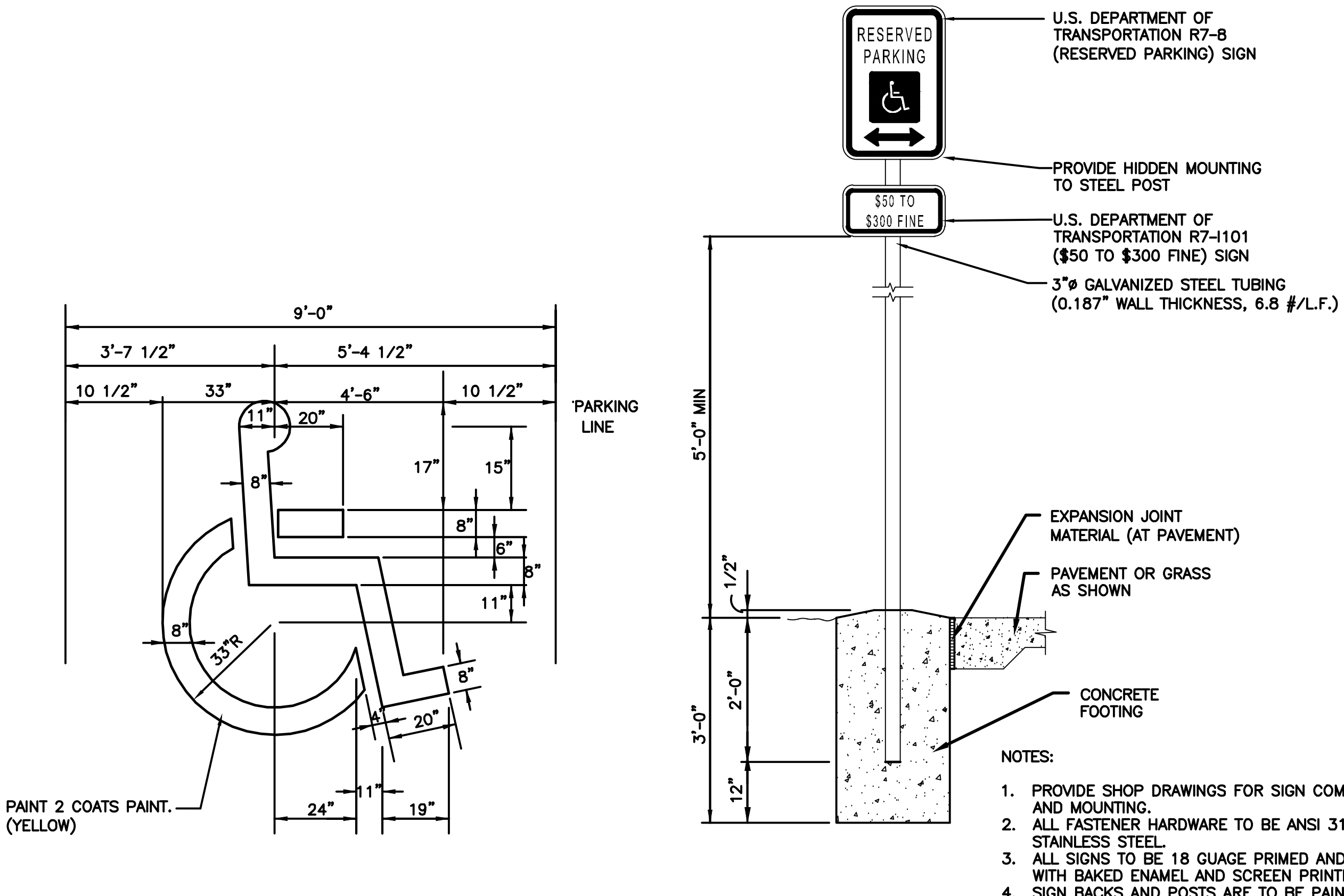


**ASPHALT**  
THE ASPHALT SURFACE SHALL BE COMPACTED TO 98% MAXIMUM DENSITY

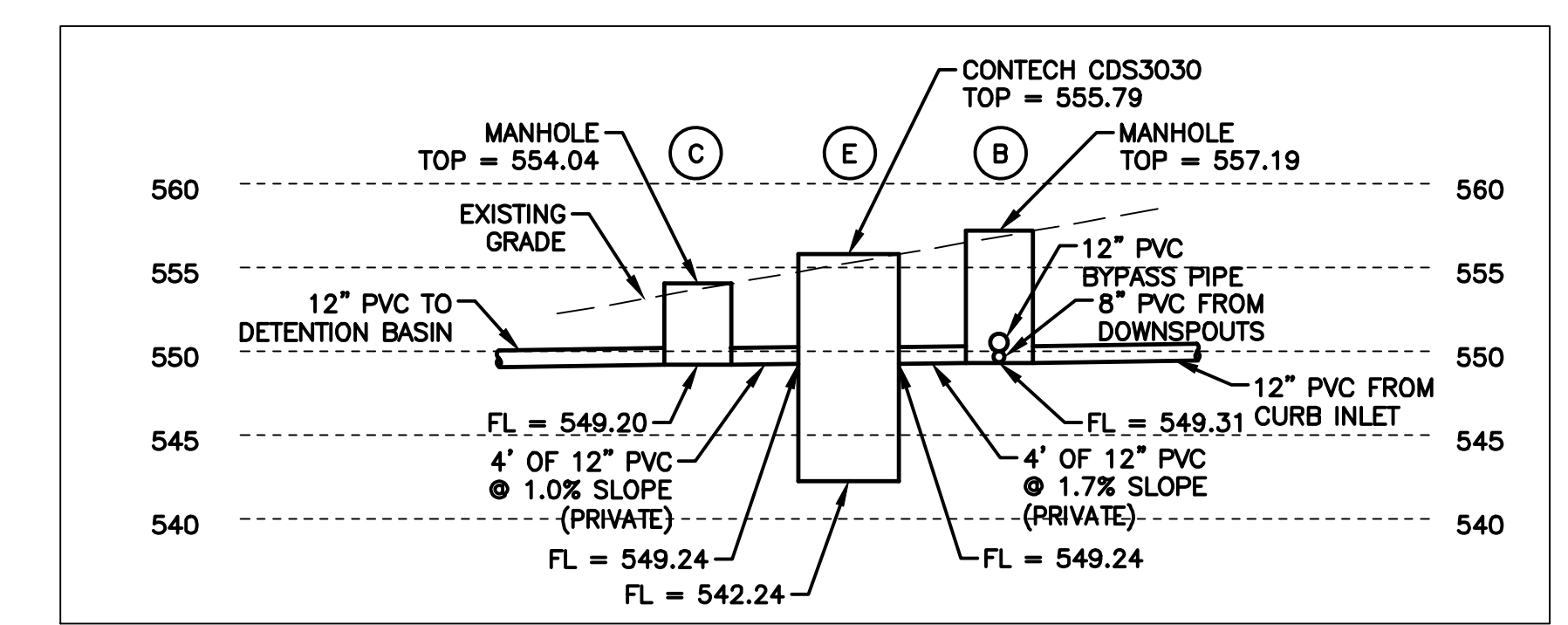
**CONCRETE ALTERNATE**  
ALL NON-REINFORCED CONCRETE SHALL BE 4,000 P.S.I. AT 28 DAYS

**1 PAVEMENT DETAIL**  
NOT TO SCALE

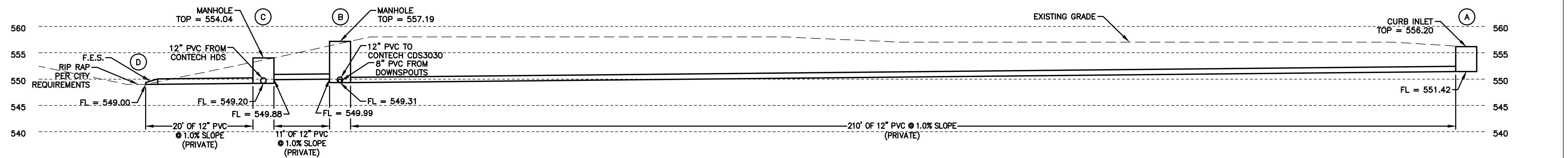


**4 HANDICAP MARKING DETAIL**  
NOT TO SCALE

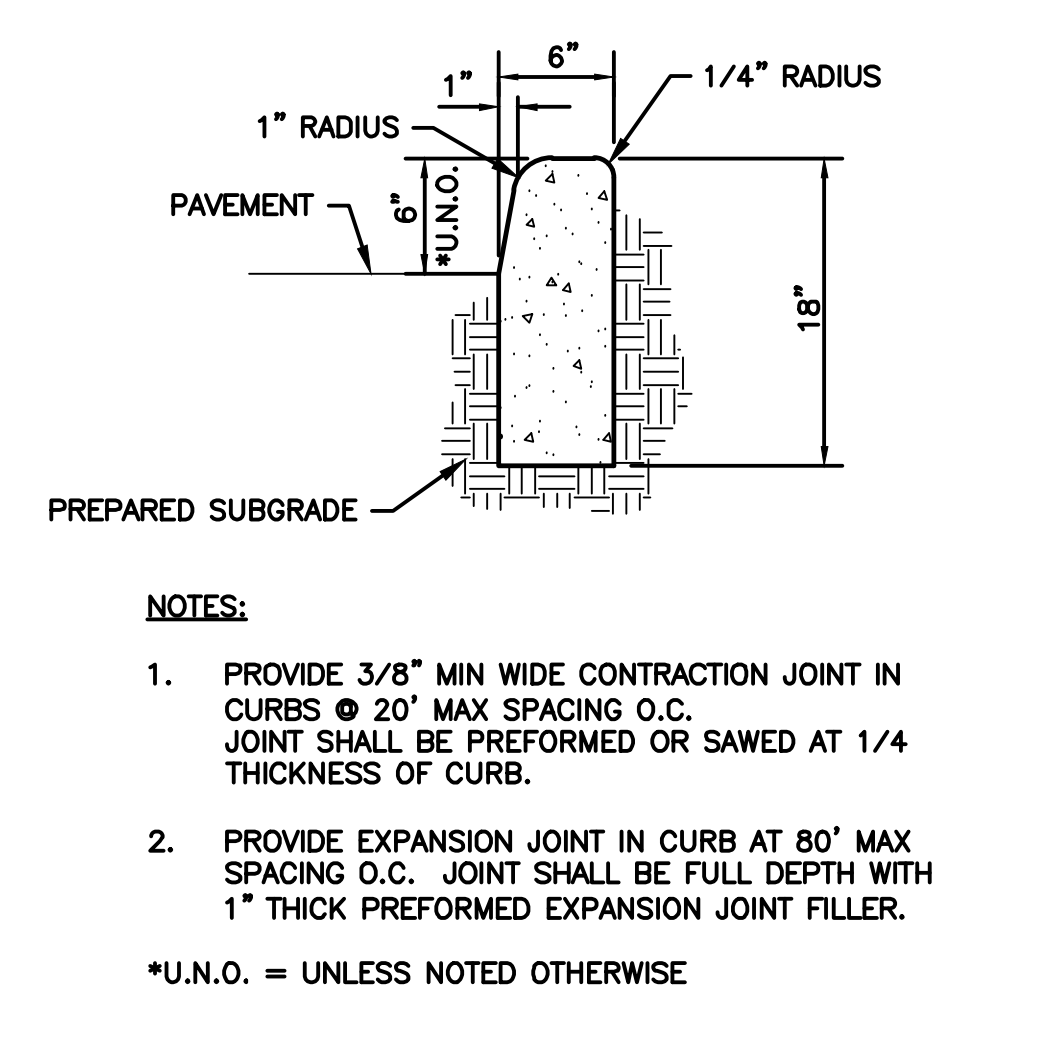
**5 ACCESSIBLE PARKING SIGN**  
NOT TO SCALE



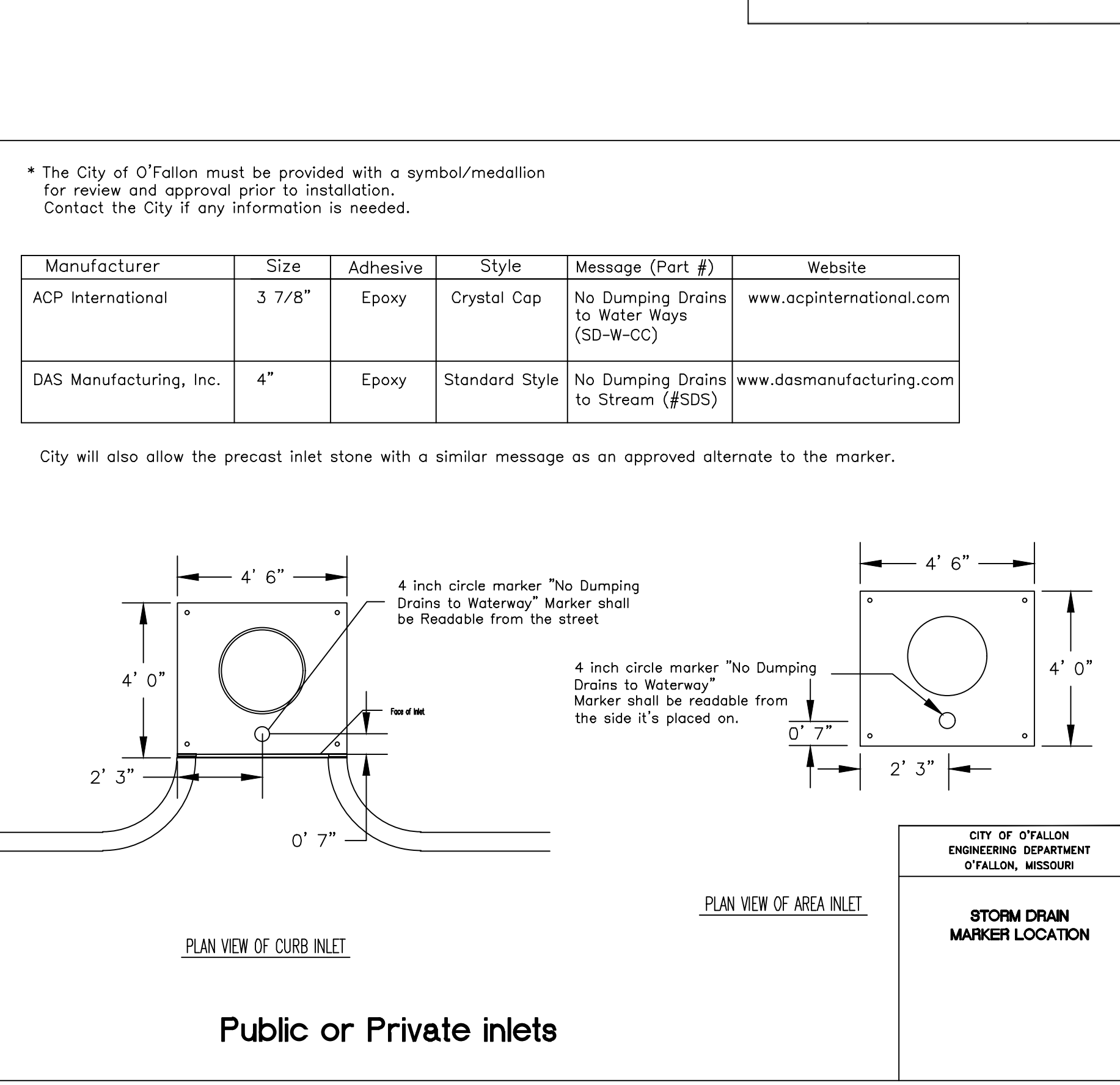
**7 PROFILE SECTION**  
SCALE: 1" = 10'



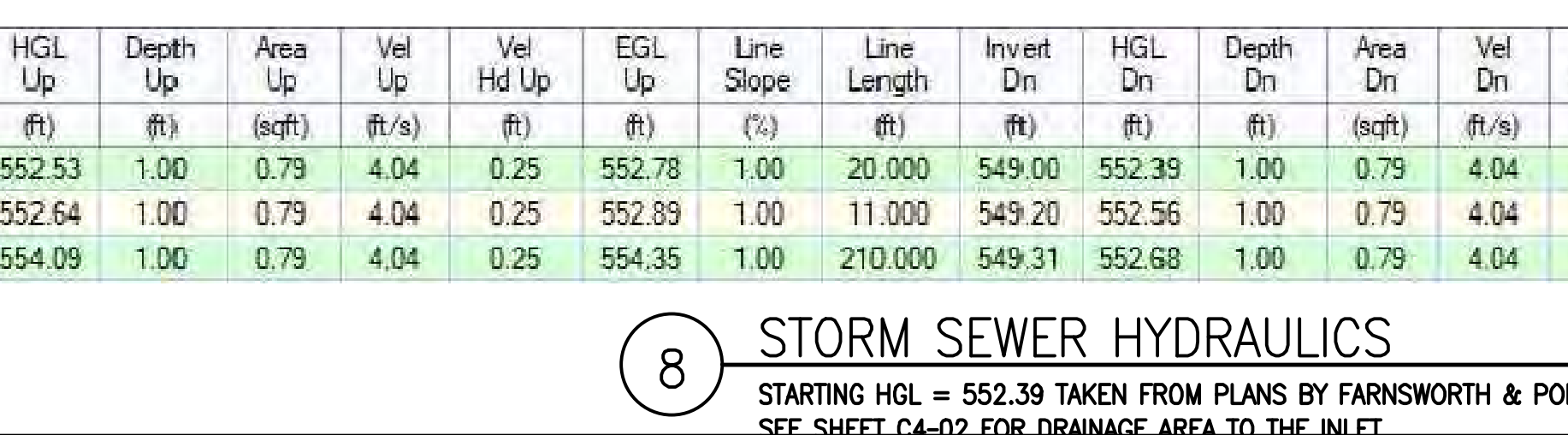
**9 PROFILE SECTION**  
SCALE: 1" = 10'



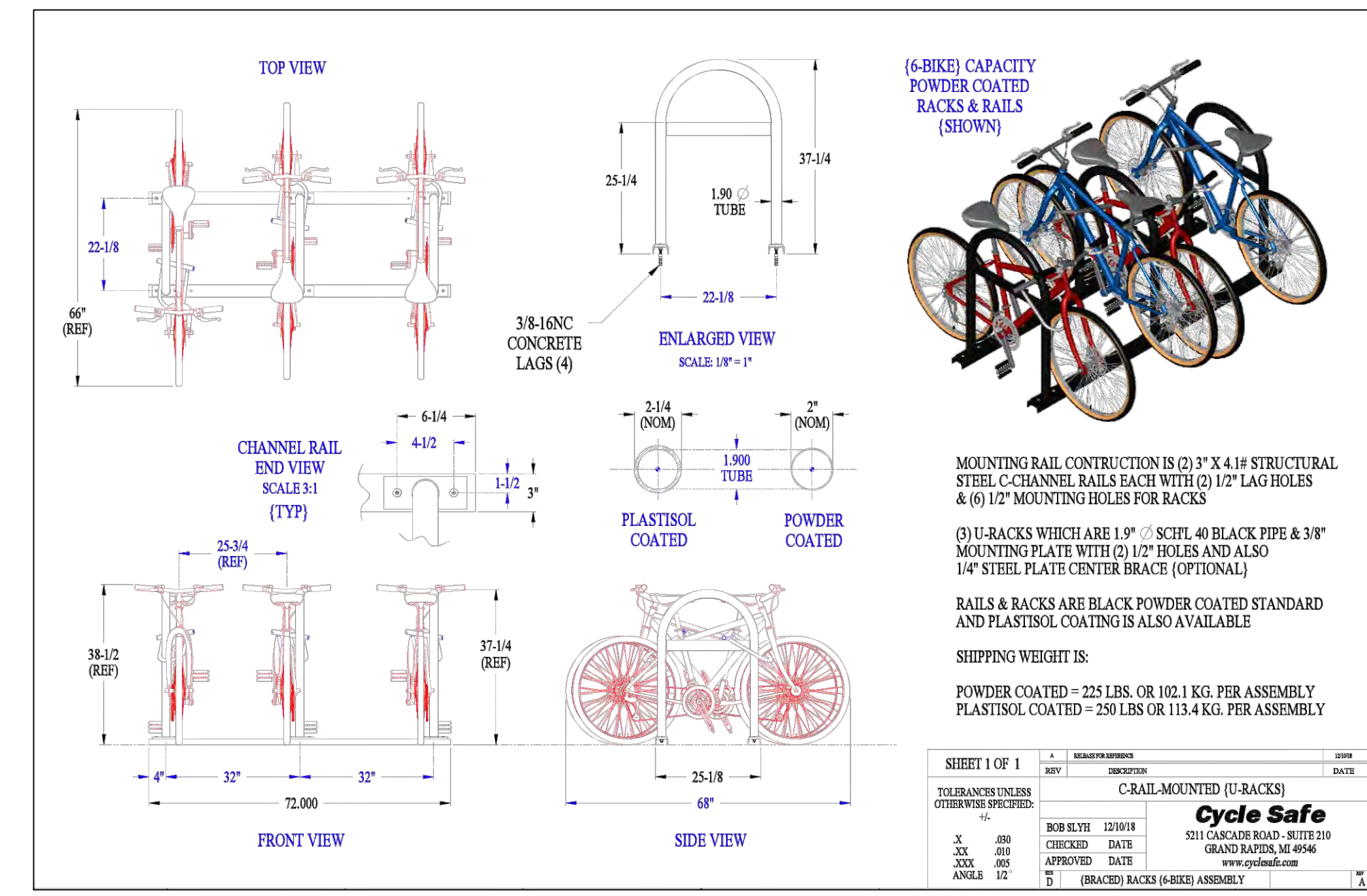
**2 CONCRETE VERTICAL CURB**  
NOT TO SCALE



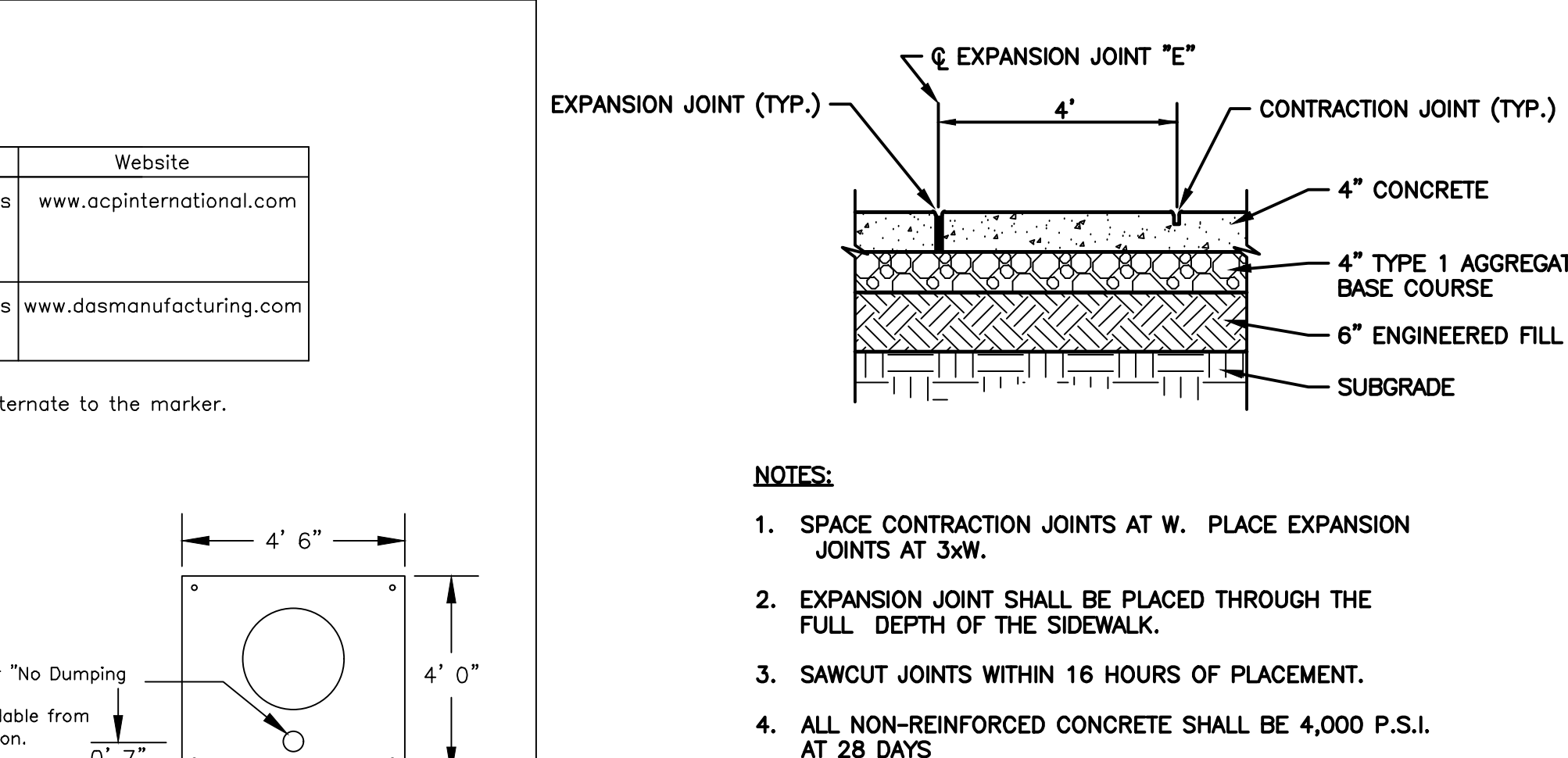
**6 STORM DRAIN MAKER**  
NOT TO SCALE



**8 STORM SEWER HYDRAULICS**  
STARTING HGL = 552.39 TAKEN FROM PLANS BY FARNSWORTH & POLK DATED 10-15-1999  
SEE SHEET C4-02 FOR DRAINAGE AREA TO THE INLET



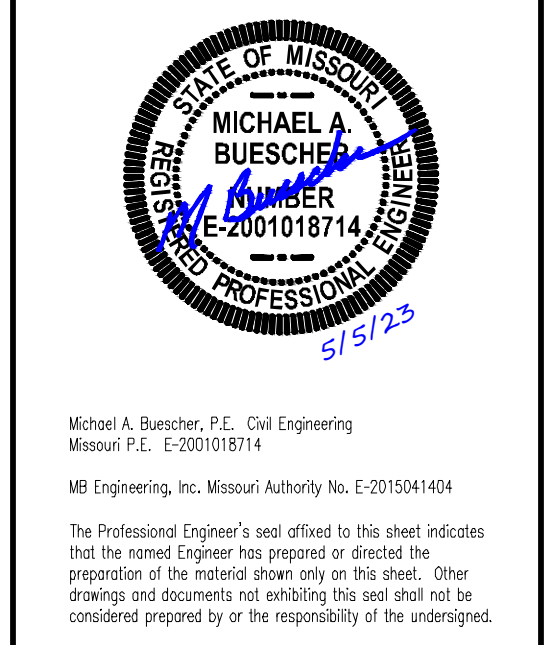
**10 BIKE RACK DETAIL**  
NOT TO SCALE



**3 TYPICAL CONCRETE WALK DETAIL**  
NOT TO SCALE

Revisions  
0 ISSUED FOR REVIEW 08/10/21  
1 CITY COMMENTS 01/23/23  
2 CITY COMMENTS 03/16/23  
3 CITY COMMENTS 03/16/23  
4 CITY COMMENTS 03/28/23  
4 CITY COMMENTS 05/05/23

**PROJECT TITLE**  
**Royal Fuels**  
8201 Mexico Rd.  
O'Fallon, MO 63376



Developer / Owner Information  
**ROYAL ENERGY, LLC**

**Typical Details**

P+Z No. 23-000415  
Approval Date  
Permit No. CSP23-000002  
Page No.  
**C3-01**