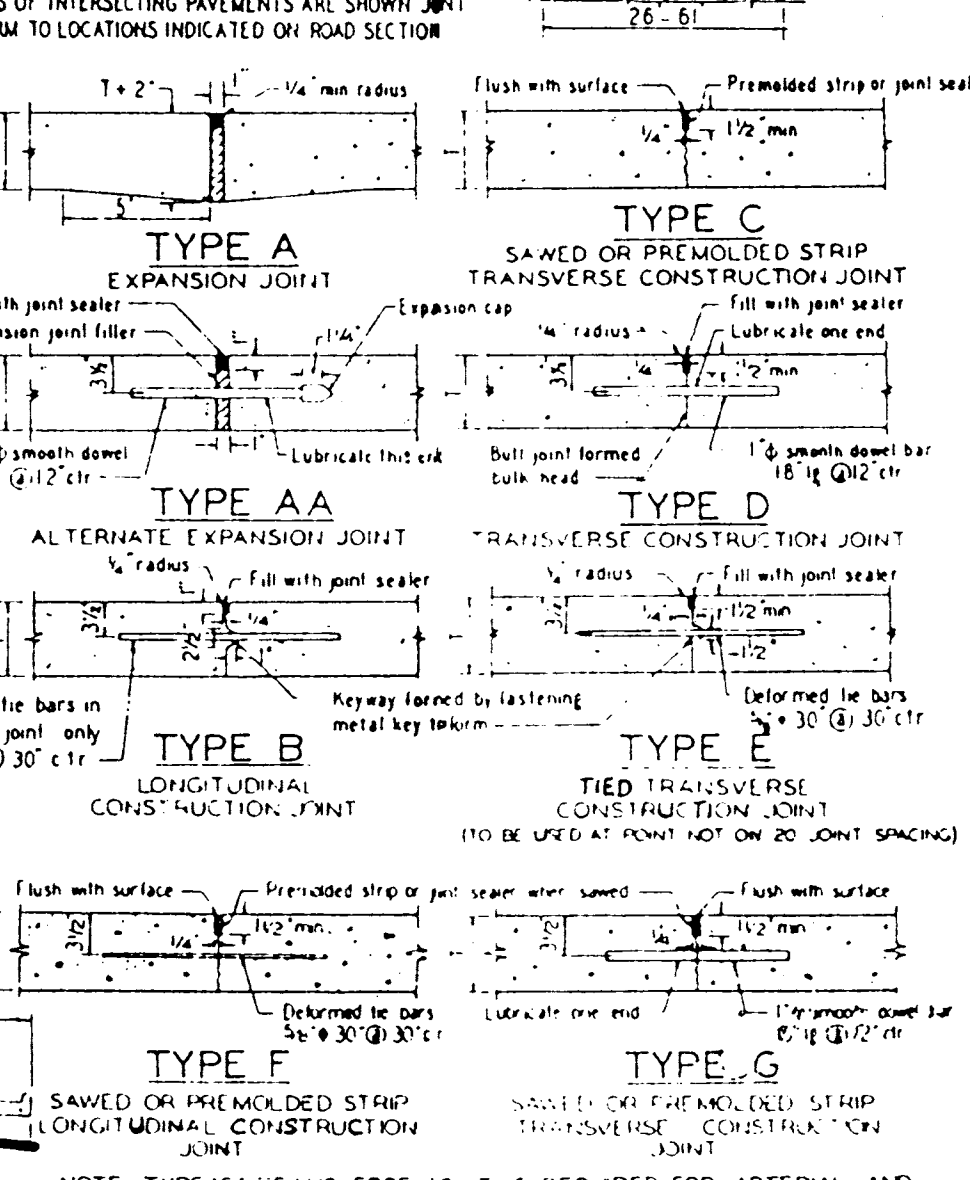
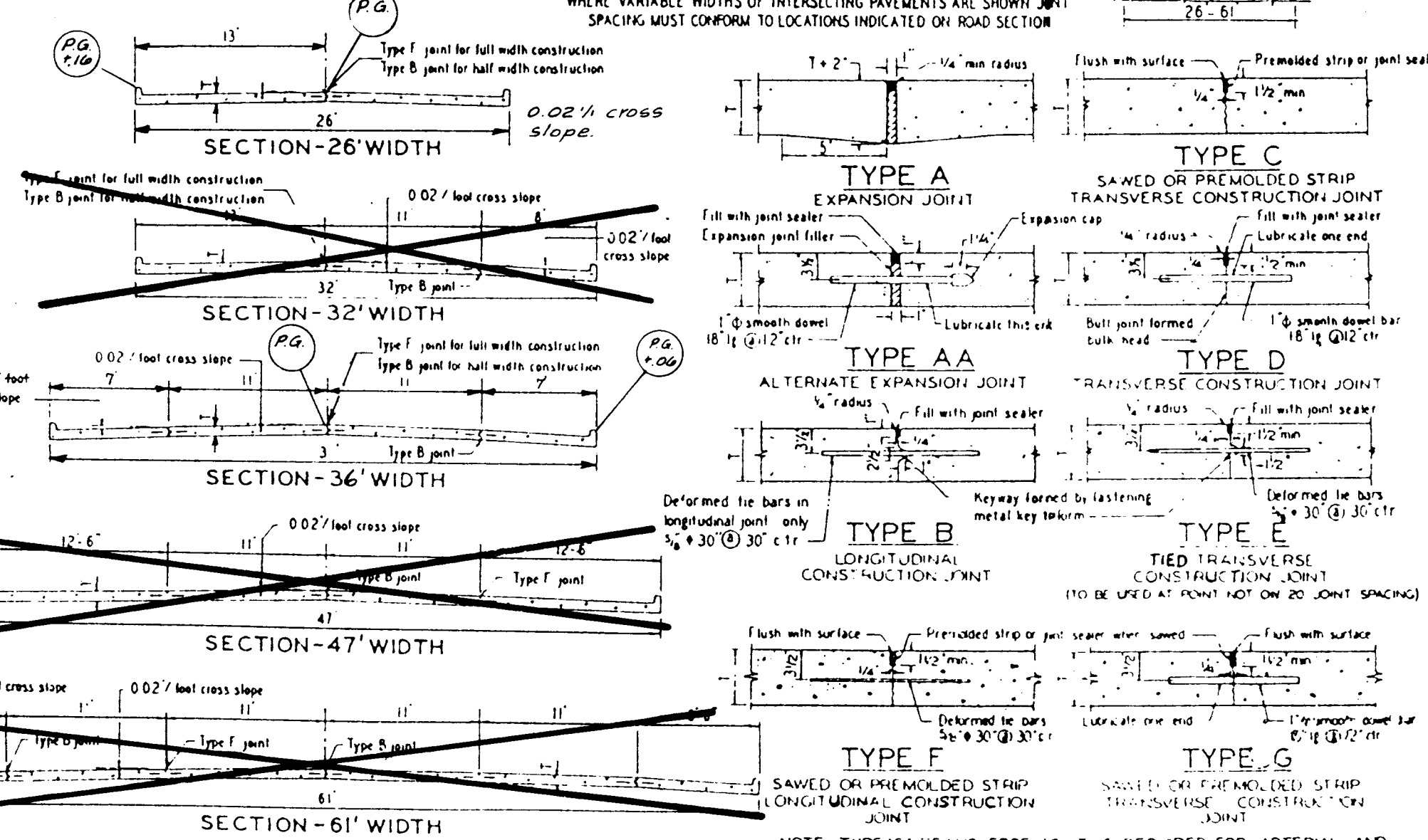
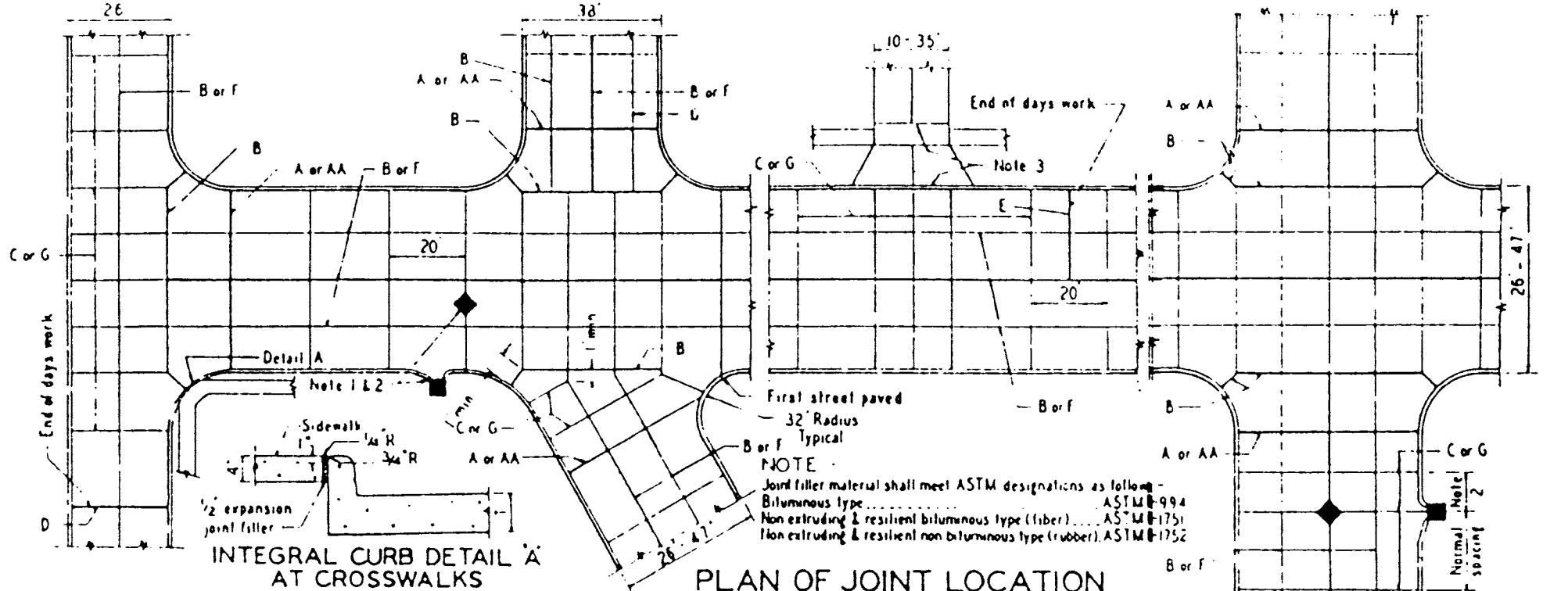


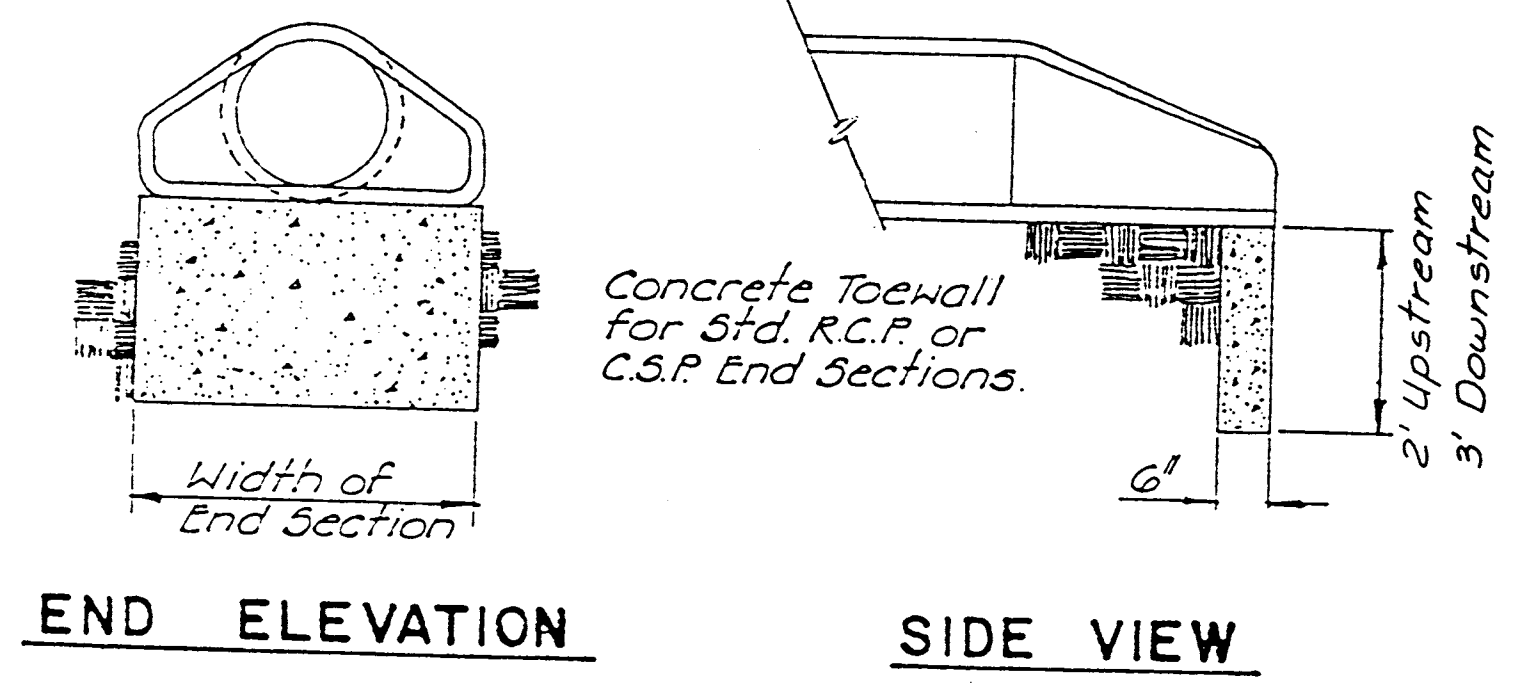
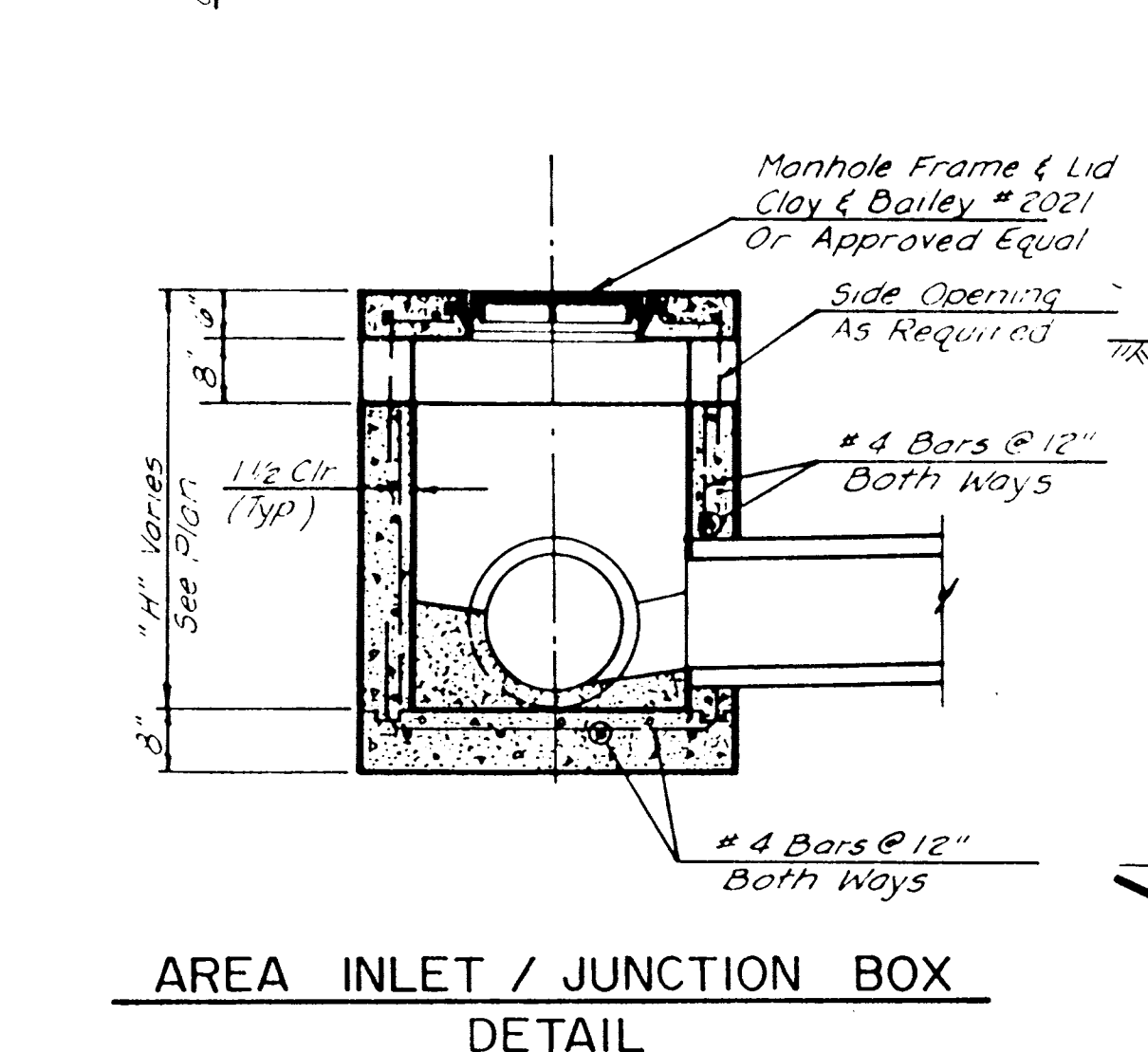
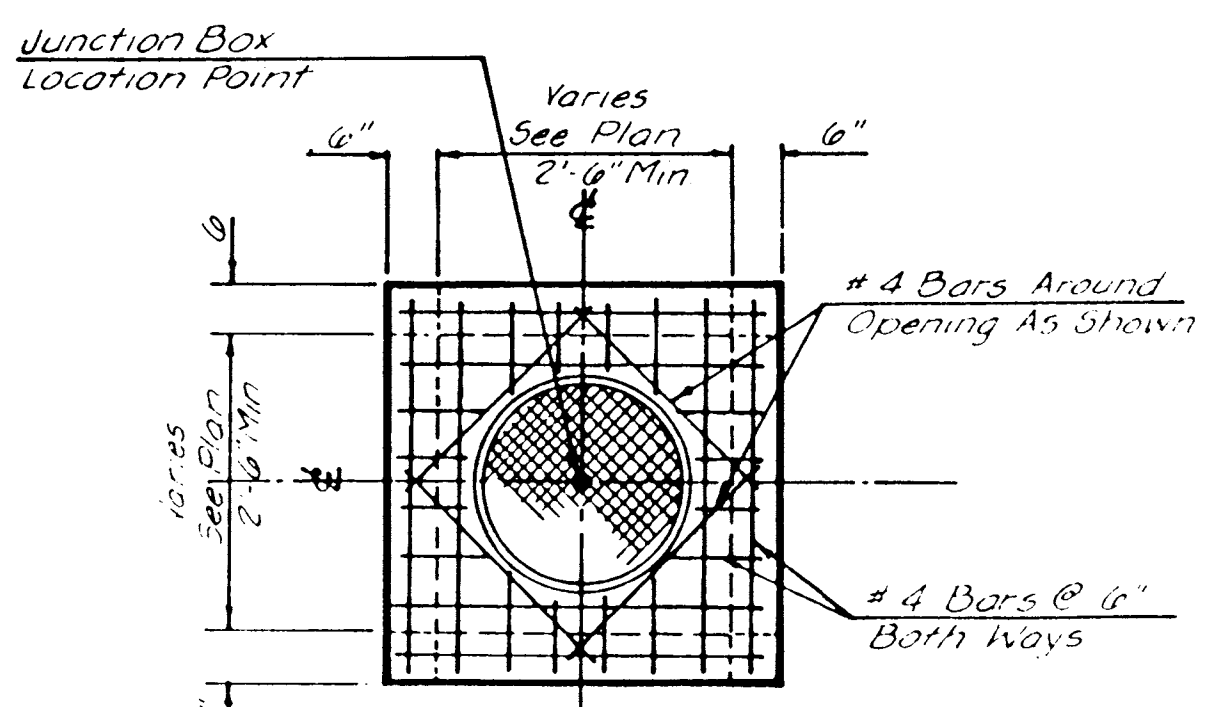
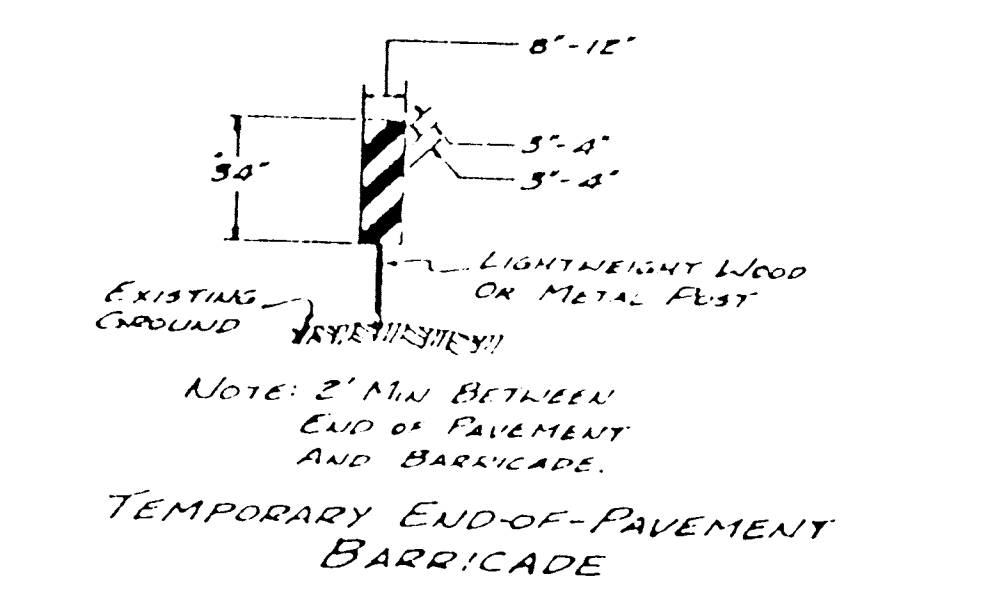
INTEGRAL CURB PAVEMENT TYPICAL SECTIONS AND DETAILS

GBA GEORGE BUTLER ASSOCIATES, INC. Engineers / Architects / Landscape Architects / Planners Kansas City, Mo. / Lenexa, Ks. / O'Fallon, Mo. / Ames, Ia. / Oklahoma City, Ok.	DATE: July, 1987
	DESIGN BY: E.K.L./L.G.
	DRAWN BY: G.R.P.
	PROJECT NO: 87-4857
ROYAL OAKS PHASE #2	SHEET NO: 10
MISC. DETAILS	TOTAL SHEETS: 12
PREPARED FOR: MR. EDWARD C. KREUTZ	BY: DATE:
REVISIONS:	

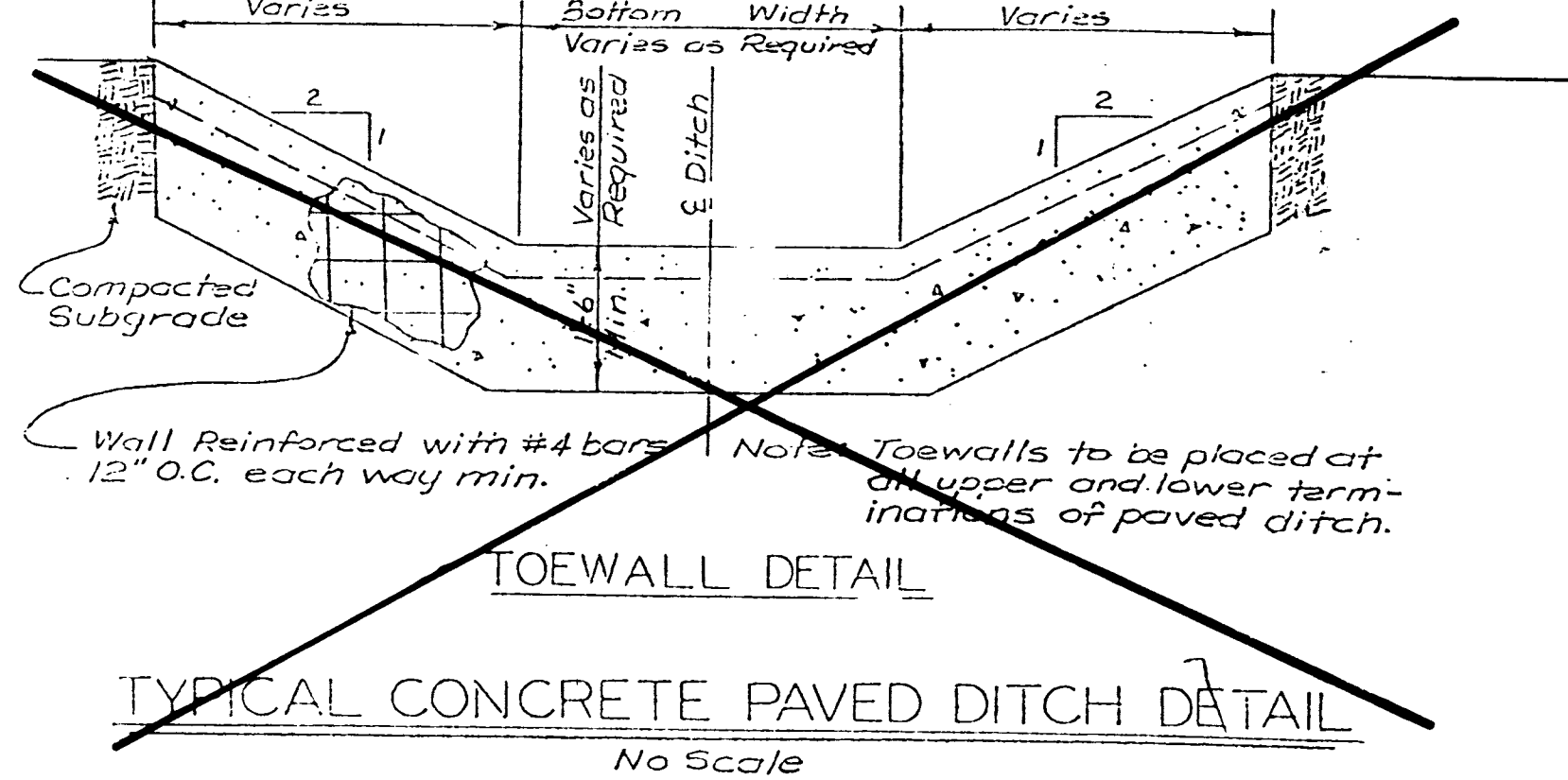
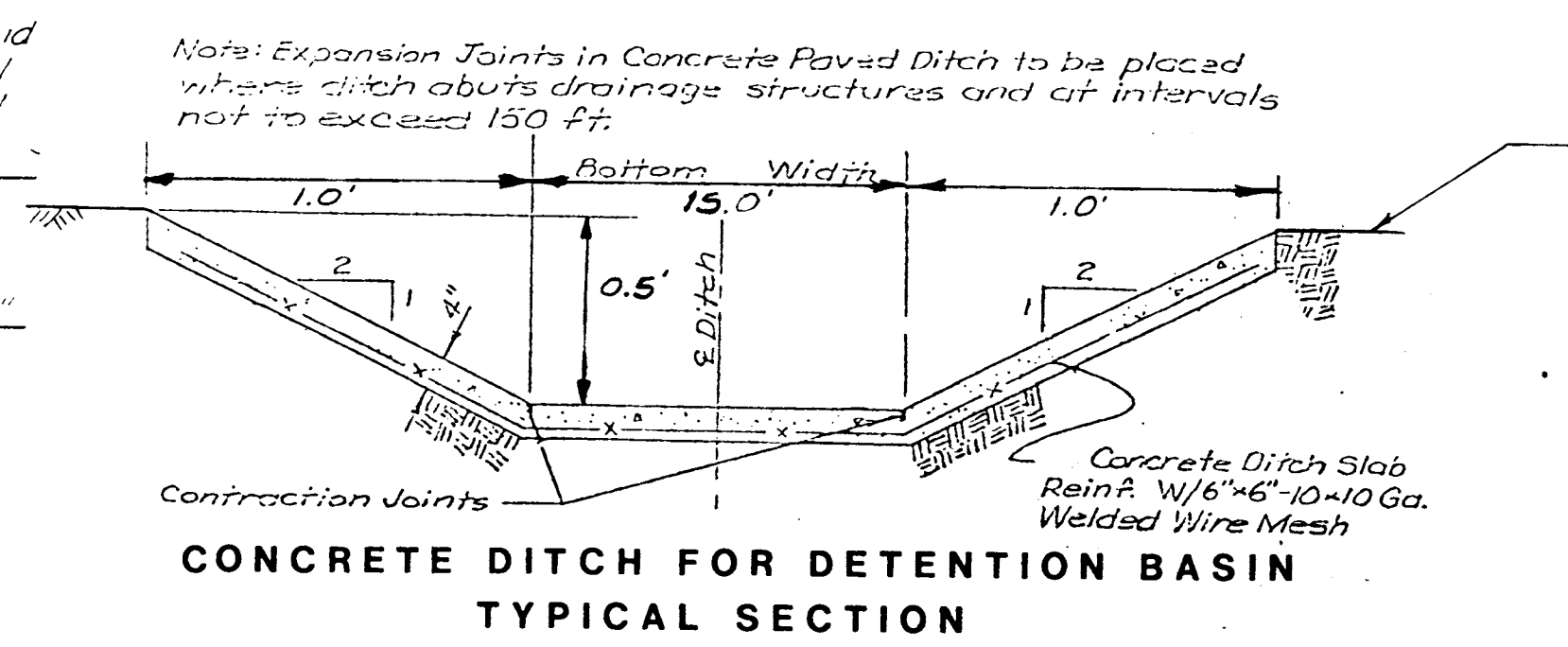


GENERAL NOTES

- All catch basins shall be separated from the pavement and curb by expansion joint material extending completely through curbs and slab. Manhole castings within the pavement limits shall be based as shown in the "Sewer Construction Details".
- When a joint falls within 5' of curbs or basins, manholes or other structures, shorten one or more panels either side of opening to permit joint to fall on round structures and at or between corners of rectangular structures.
- Driveway configurations are shown in the "Entrance Construction Details".
- Construction joint and detail bars may be omitted when curb is poured integral with pavement.
- Minimum thickness for pavement is 4" and for concrete base is 4" and for concrete base is 4".
- For minor Rural or Urban and Minor Subdivision pavements (6" thick concrete), 1/2" @ 30" c/c shall be used for TYPE G longitudinal joints.
- Refer to Exhibit 13A for joint detail bar required for different street classifications. Note that width and location of each poured portion of the pavement may change the type and location of joint required.
- Transverse or longitudinal construction joints slip formed pavement may be made with groover and tool, if such device has been approved in advance by the St. Louis County Department of Highways, Traffic.
- The locations of the Type B and Type F longitudinal construction joints in above sections, may be interchanged for the different widths of construction if approved in advance.



CONCRETE TOEWALL DETAILS
N.T.S.



- GENERAL NOTES**
- All construction shall be done in accordance with the standards set forth by the City and installation shall be done under the supervision of the City Engineer.
 - Water Main Pipe to be 6" Class 200 P.V.C.
 - All fittings shall be mechanical joint, cast iron.
 - All fire hydrants shall have 5-1/4" valve opening, pump nozzle and 2 hose nozzles with 6" inlet connection, as specified by City Engineer.
 - Bids for fire hydrants shall include 6" valve and box.
 - Water and sewer main crossings shall conform to the Missouri Clean Water Commission Standards.
 - Trench backfill shall be granular material through street crossings. All trench backfill to be compacted to 95% maximum density.
 - Testing, sterilization and flushing shall be performed to the satisfaction of the City Engineer.
 - All house service connections are to be done in a manner prescribed by the City Engineer.
 - The price for the construction items shall include the cost for labor and materials for installation.
 - All bends, tees and hydrants shall be block with concrete per the detail.

