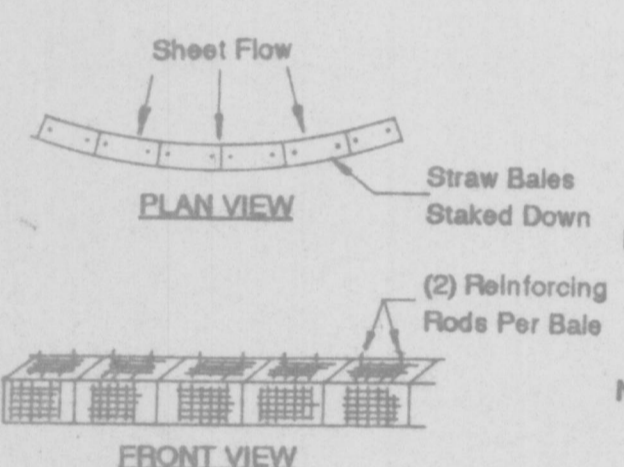


ST. PAUL ESTATES
P.B. 20 / PG. 108-109
St. Charles County, Mo.
Zoned R-1E

DATE: JUNE 1993	
DESIGN BY: GRH	
DRAWN BY: JG	
PROJECT NO. 6803	
SHEET NO.	TOTAL SHEETS
6	9
REVISIONS	
Drainage Areas & swales	BY: JG DATE: 7/19/93

- GENERAL NOTES**
- All filled and graded areas shall be seeded with grass within 45 days following completion of filling or grading.
 - Due to extensive grading necessitated by the site topography few, if any, existing trees can be retained. Therefore, not later than 2 years following completion of grading fifteen (15) trees per acre shall be planted. These hardwood trees shall be not less than (2) inches in diameter and not less than (8) feet in height.
15 trees/acre X 1.4 acres = 21 trees
 - No slope shall be more than 3:1.
 - APPROXIMATE ROUGH GRADING QUANTITIES:
CUT - 11,195 C.Y. FILL - 24,029 C.Y.
 - Use Borrow Area, as shown on sheet 3, as needed from street Sta. 10+00 to Sta. 15+00.



SILTATION CONTROL NOTE
Siltation Control shall be Bales of Straw placed end to end and anchored to ground with 4f long reinforcing rods.
Note: Siltation control is to be placed in all areas where a potential exists for silt to leave the construction site.
Note: Straw Bale Erosion Control to be used until vegetation is established.

STRAW BALE DETAIL

SILTATION CONTROL DETAIL N.T.S.

STORM STRUCTURES

STRUCTURE	STA	DISTANCE	STREET
EP #1	8+80	25' RT	FAWN OAKS DRIVE
MH #2	8+56.67	17' RT	FAWN OAKS DRIVE
AI #3	-	-	-
CI #4	8+05.25	17' RT	FAWN OAKS DRIVE
CI #5	2+94.77	17' RT	CRESTWOOD DRIVE
DCI #6	6+90.75	17' RT	FAWN OAKS DRIVE
DCI #7	6+90.75	17' RT </tr	

SANITARY MANHOLES

LINE "A"			
EX MH #16	-	-	-
MH #100	14+76.67	25' RT	FAWN OAKS DRIVE
MH #101	11+32.67	25' RT	FAWN OAKS DRIVE
MH #102	9+94.67	25' RT	FAWN OAKS DRIVE
MH #103	7+16.70	26.35' RT	FAWN OAKS DRIVE
MH #104	3+16.39	21' RT	FAWN OAKS DRIVE
MH #105	2+18.24	18' RT	FAWN OAKS DRIVE
MH #106	1+94.36	89' LT	FAWN OAKS DRIVE
LINE "B"			
MH #103	3+23.43	31.55' RT	CRESTWOOD DRIVE
MH #107	1+48.54	17' RT	CRESTWOOD DRIVE

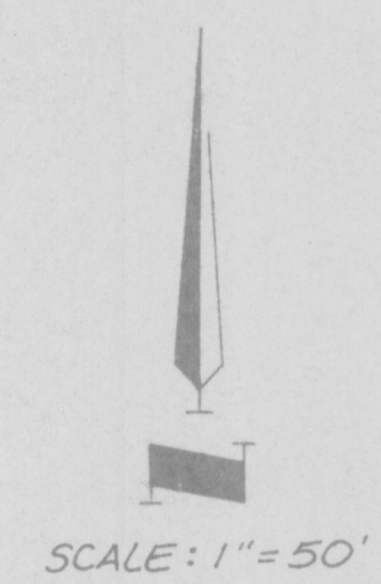
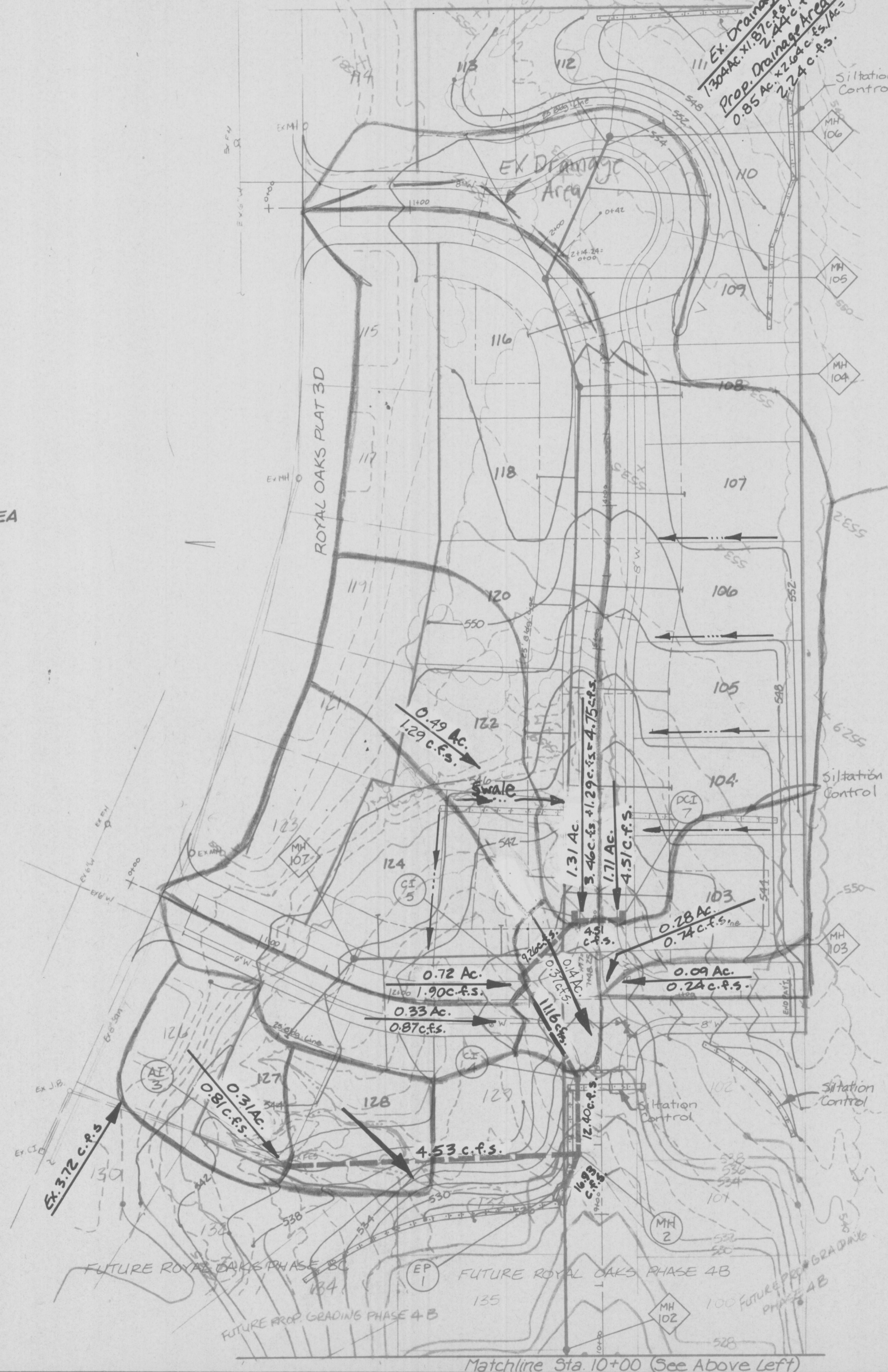
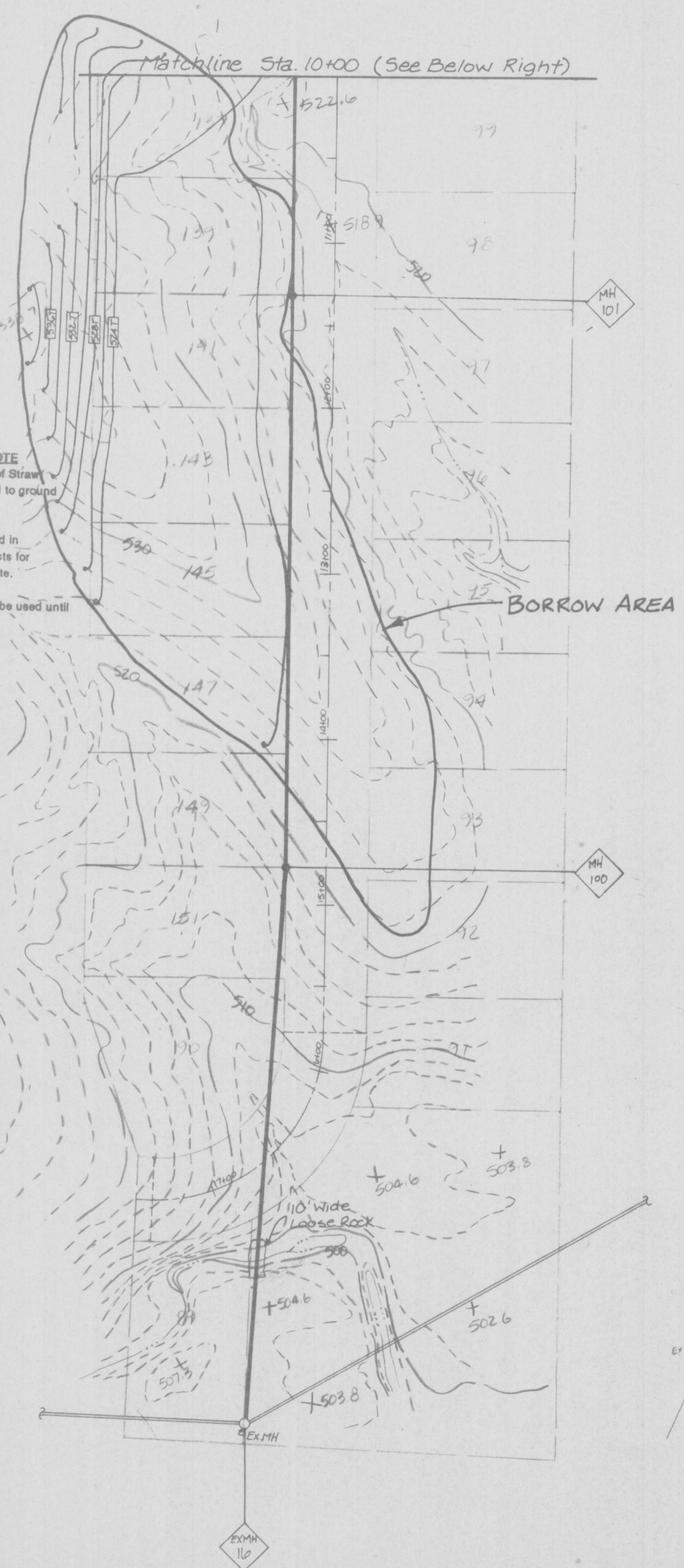
STORM WATER DETENTION

PHASES CONSTRUCTED:

PHASE 2	10.38 Ac.
PHASE 3A	2.11 Ac.
PHASE 3B	4.87 Ac.
PHASE 3D	1.79 Ac.
PHASE 4A (PROPOSED)	19.15 Ac. X (3.26-2.31) X 1800 = 32,766 c.f.
	5.36 Ac. X (3.26-2.31) X 1800 = 9,186 c.f.
	24.51 Ac. = 41,932 c.f.
REQ. SEDIMENT STORAGE	24.51 Ac. X 150 c.f. = 3,677 c.f.
REQ. DETENTION STORAGE	45,609 c.f.

DETENTION PROVIDED:

PHASE 2	58,012 c.f. (61,531 c.f.)
PHASE 3B	20,100 c.f.
	79,012 c.f.



LOT #	FINISH FLOOR
103	542.5
104	545.5
105	547.5
106	551.0
107	552.5
108	553.5
109	554.5
110	555.0
111	555.0
112	555.0
113	555.0
116	554.0
118	553.0
120	550.0
122	546.5
124	546.0
125	542.0
127	546.0
128	544.0

N/F
Kellerman, Etal.
878/887
Zoned P.U.D.

As-Built-16.
5/23/94

LEGEND

