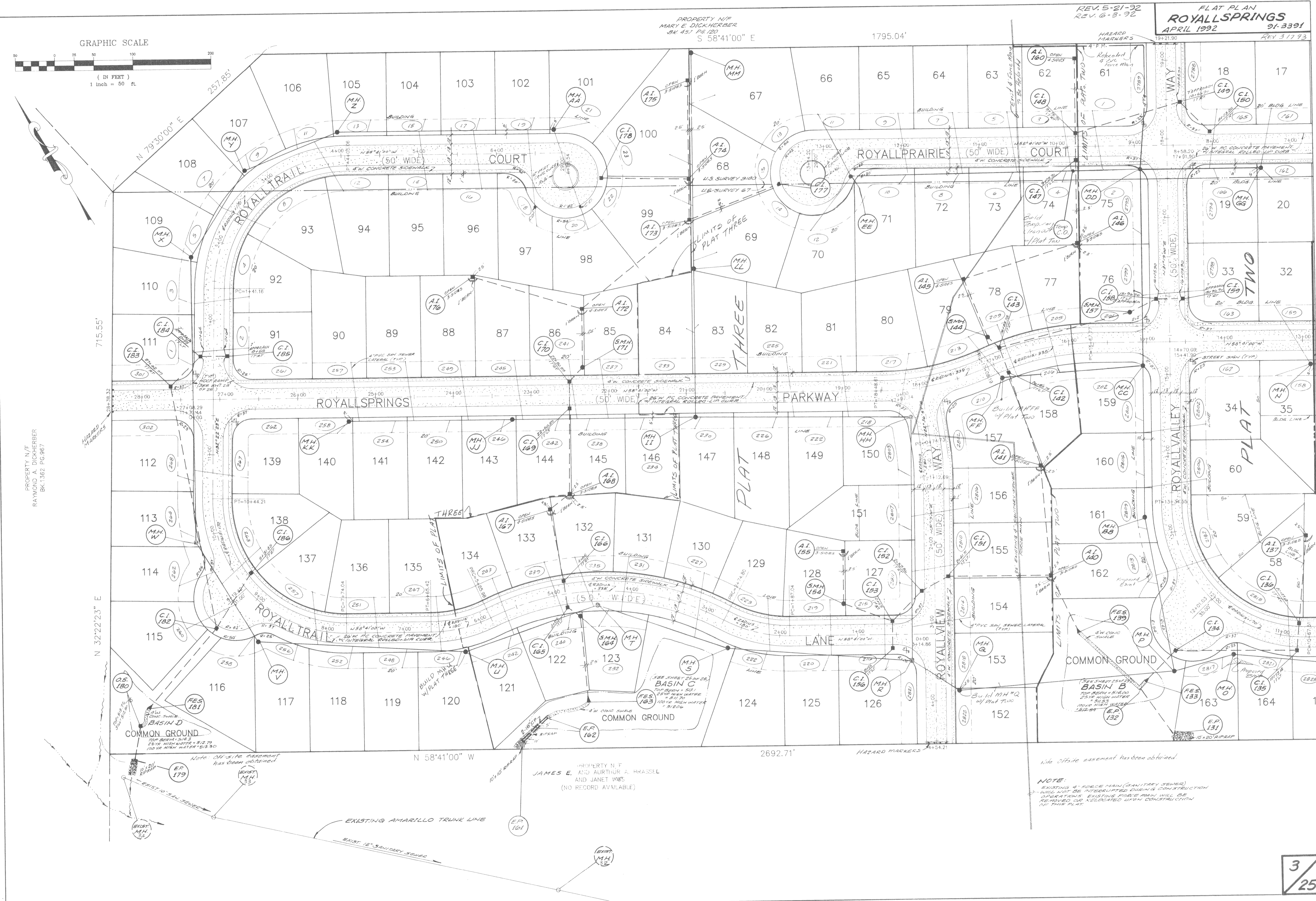


PROPERTY N/F  
RAYMOND B. DICKHERBER  
BK. 1562 PG. 967



PROPERTY N/F  
JAMES E. AND ARTHUR A. BRASSEL  
AND JANET WIES  
(NO RECORD AVAILABLE)

Note: Off-site easement has been obtained.  
  
NOTE:  
EXISTING 4" FORCE MAIN (SANITARY SEWER)  
WILL NOT BE INTERRUPTED DURING CONSTRUCTION  
OPERATIONS. EXISTING FORCE MAIN WILL BE  
REMOVED OR RELOCATED UPON COMPLETION  
OF THIS PLAT.