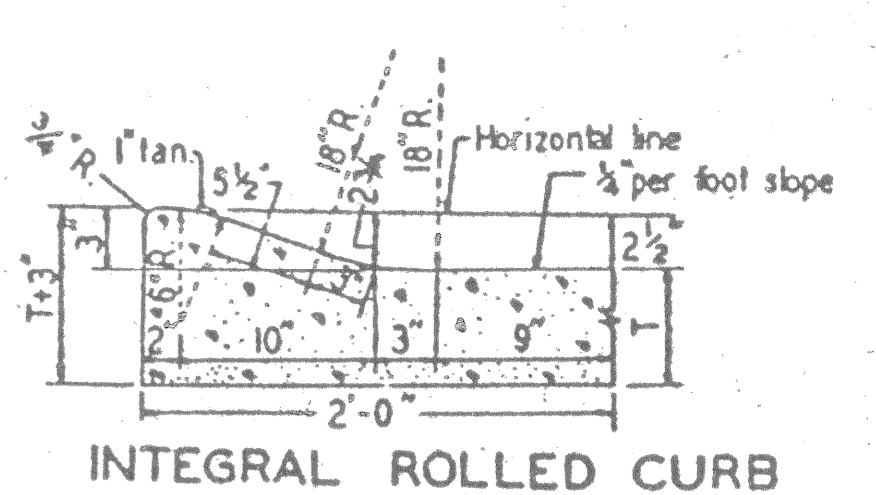
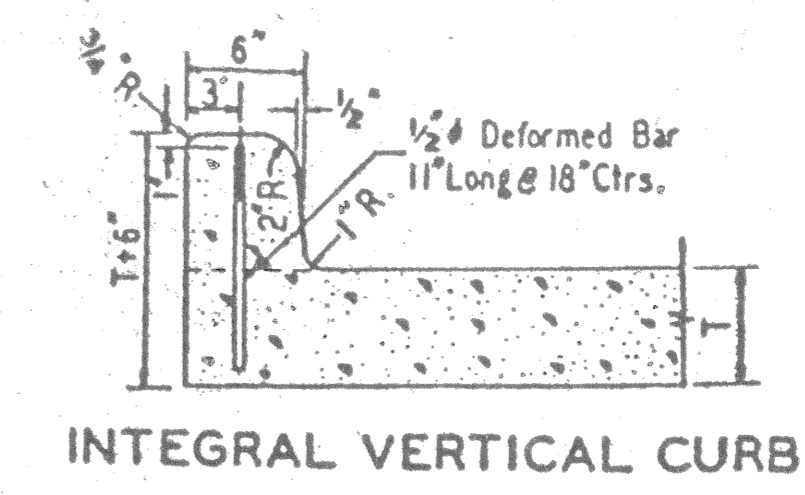
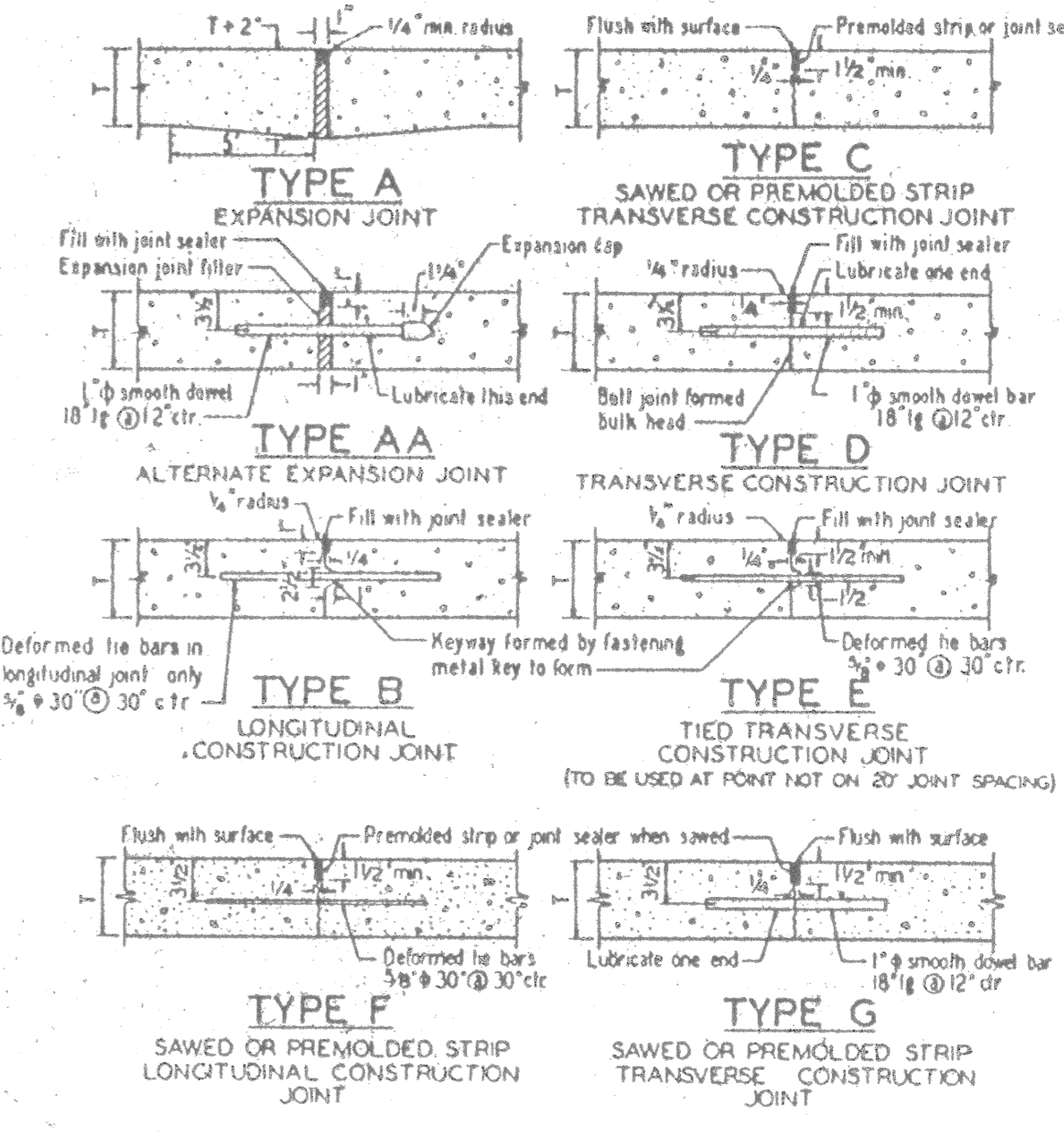
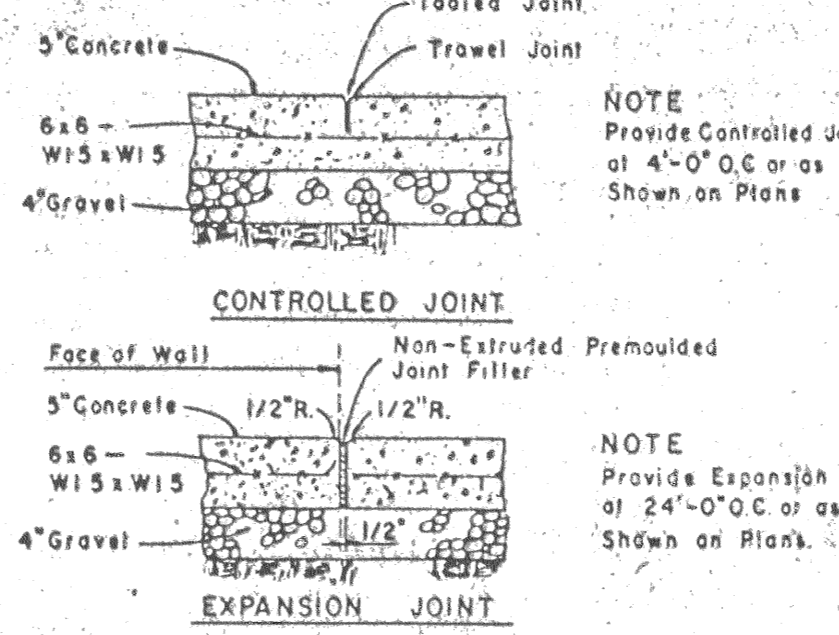
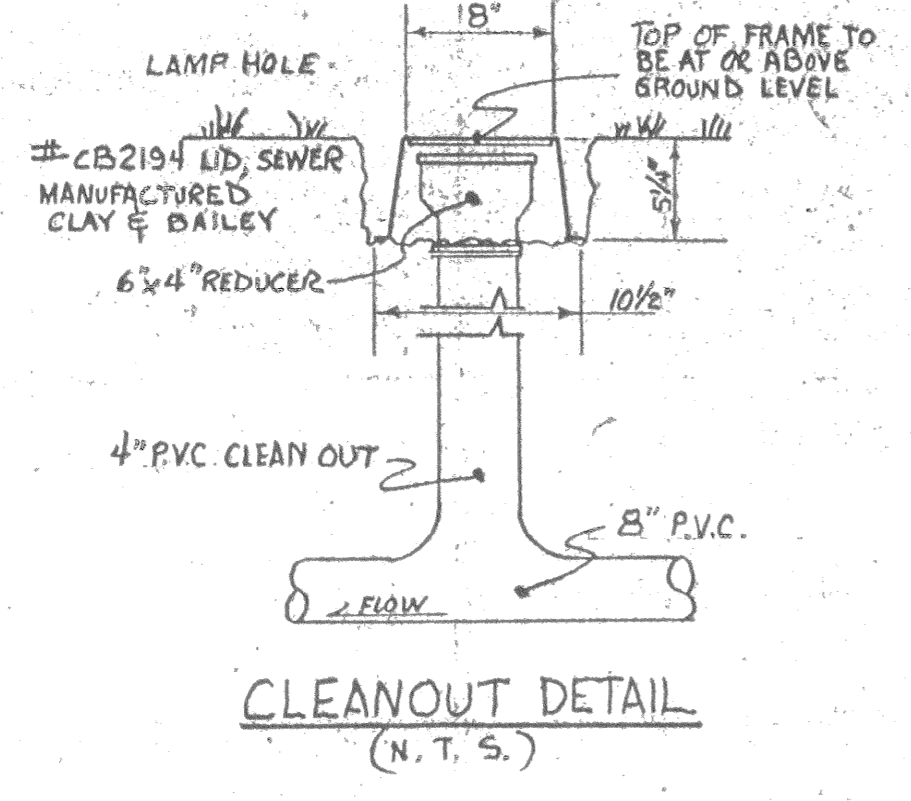
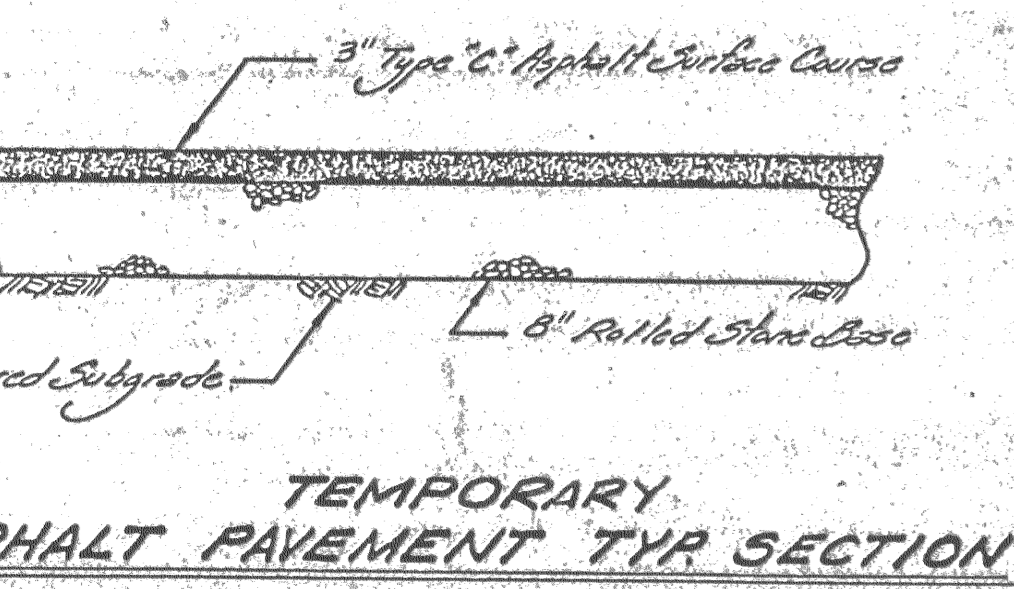
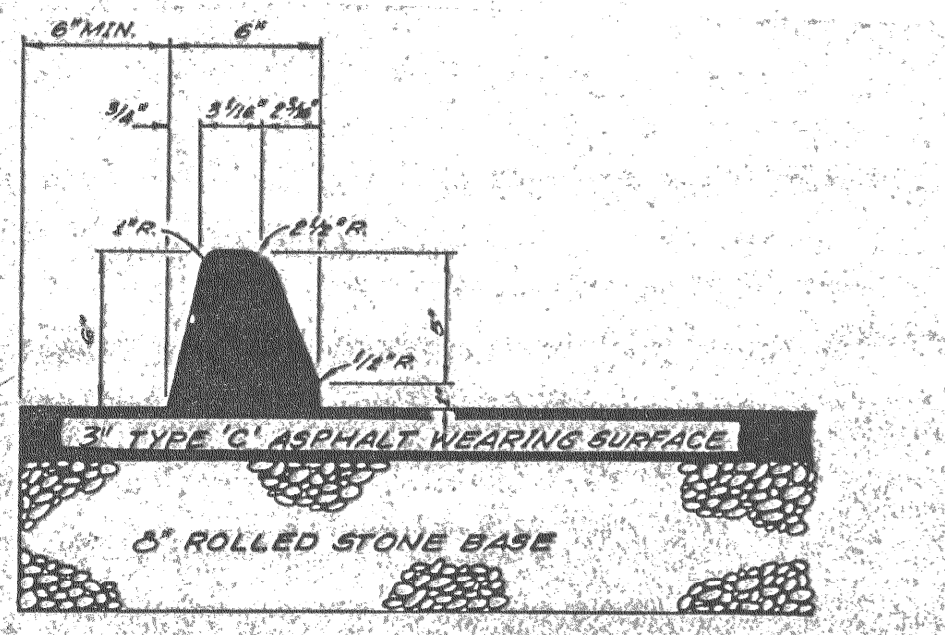
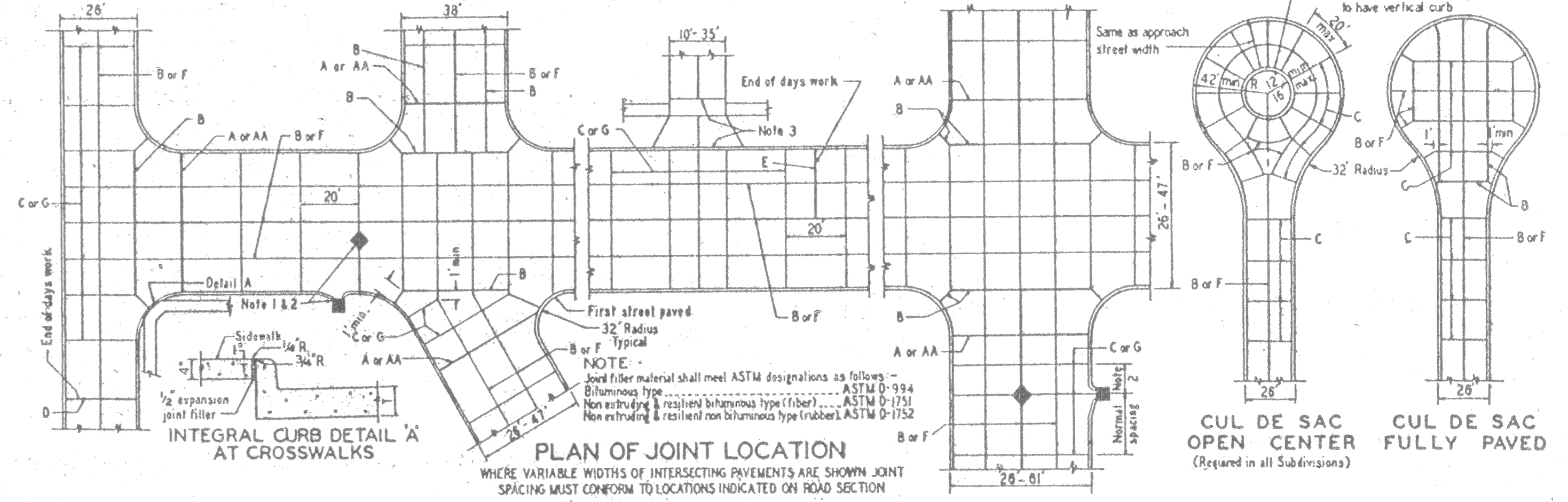


NOTE:
 FOR FUTURE PROPOSED AND TEMPORARY
 CENTERLINE PROFILES, SEE SHEET 8 OF 25.

** NOTE:
 ALL TEMPORARY ASPHALT PAVEMENT
 WILL BE 8" ROLLED STONE BASE
 W/ 3" TYPE 'C' ASPHALTIC CONCRETE
 WEARING SURFACE.



INTEGRAL CURB PAVEMENT TYPICAL SECTIONS AND DETAILS



- GENERAL NOTES
- All catch basins shall be separate from the pavement and curb by expansion joint material extending completely through curb and slab. Manhole castings within the pavement limits shall be based on shown in the "Sewer Construction Details".
 - When a joint falls within 5 ft. of or contacts basin, manholes, or other structures, shorten one or more panels either side of opening to permit joint to fall on round structures and at or between corners of rectangular structures.
 - Driveway configurations are shown in the "Entrance Construction Details".
 - Construction joint and dowel bars may be omitted when curb is poured integral with pavement.
 - Minimum Thickness for Pavement is
- | Local or Minor Streets | CONCRETE (T) |
|--------------------------------|--------------|
| Major or Industrial Streets | 6" |
| Arterial or Industrial Streets | 7" |
| Arterial or Industrial Streets | 8" |
- Base material under pavement will be grade with 4 inches of Rolled Stone Base.
- For minor rural or urban and minor subdivision pavements (6" thick concrete), 1/2" Ø deformed tie bars 30" lg. A 30" ctr. shall be used for TYPE B longitudinal joints. Refer to Exhibit 13A for joint and bar requirements for location of each poured portion of the pavement may change the type and location of joint required.
 - Transverse or longitudinal construction joints in all formed pavement may be made with groover or tool, if such device has been approved in advance by the St. Louis County Department of Highways & Traffic.
 - The locations of the Type B and Type F longitudinal construction joints in above sections may be interchanged for the different widths of construction if approval is obtained.

