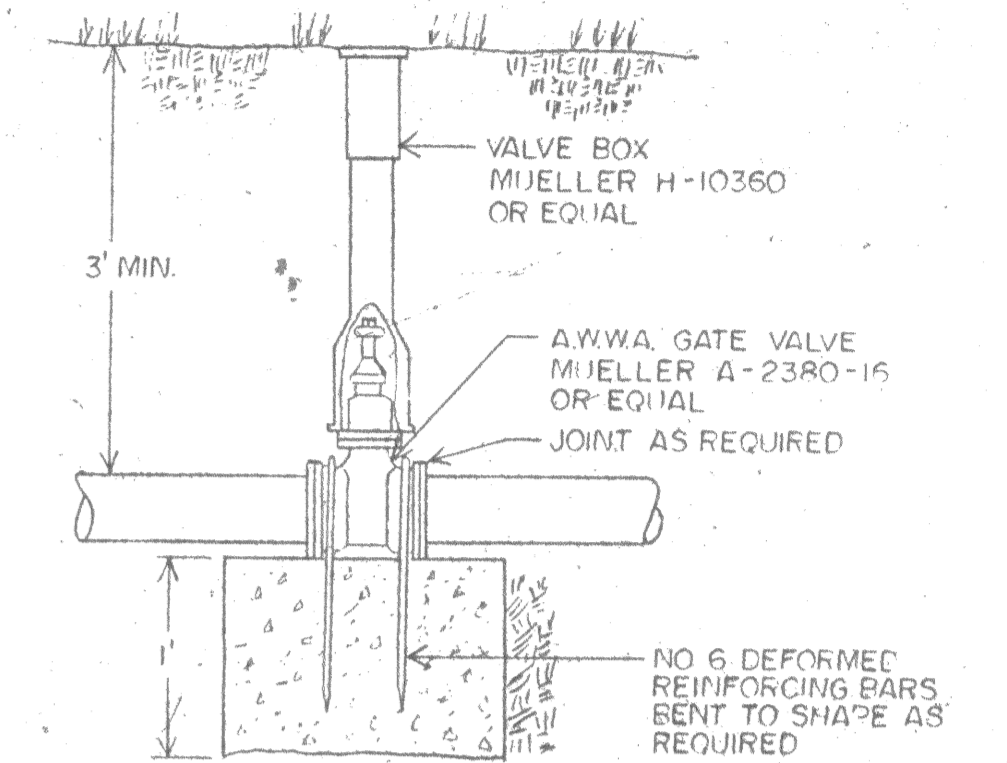
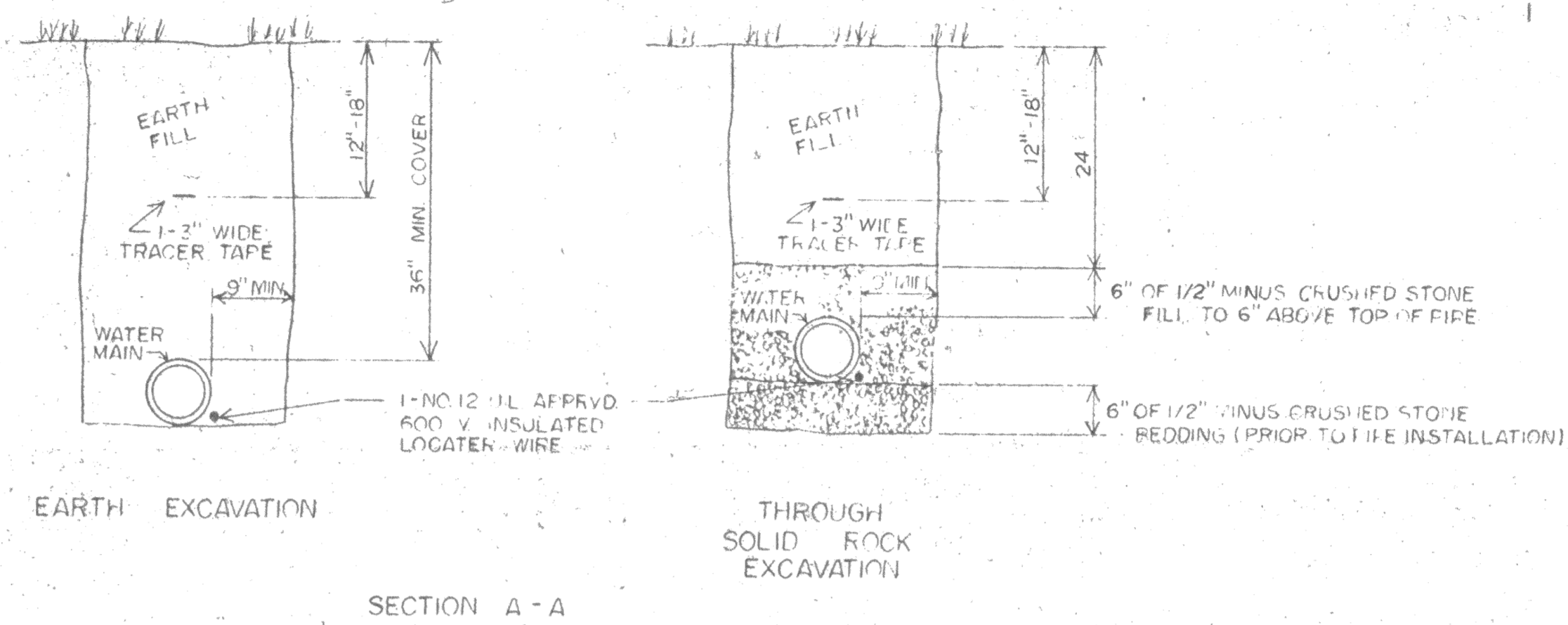
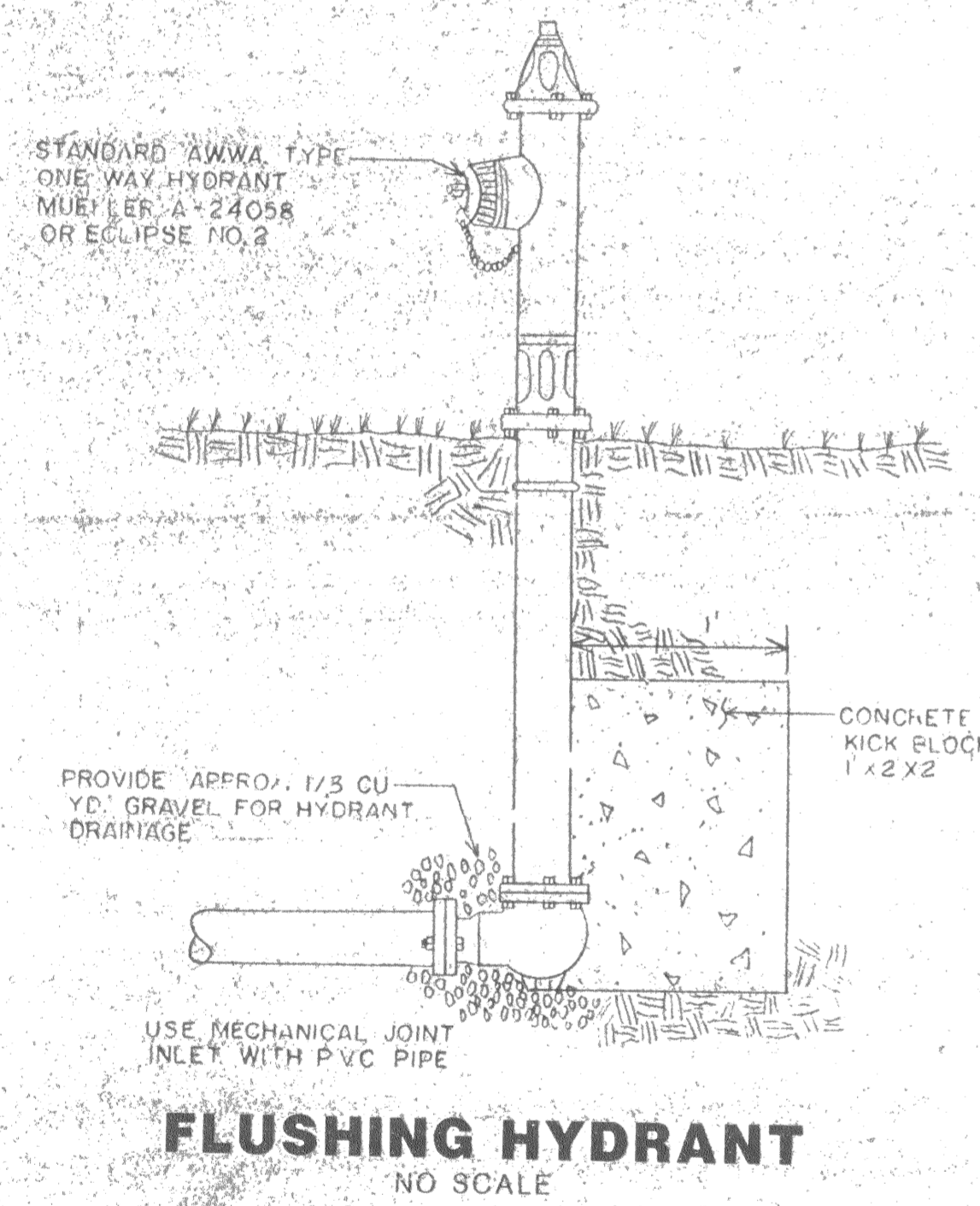


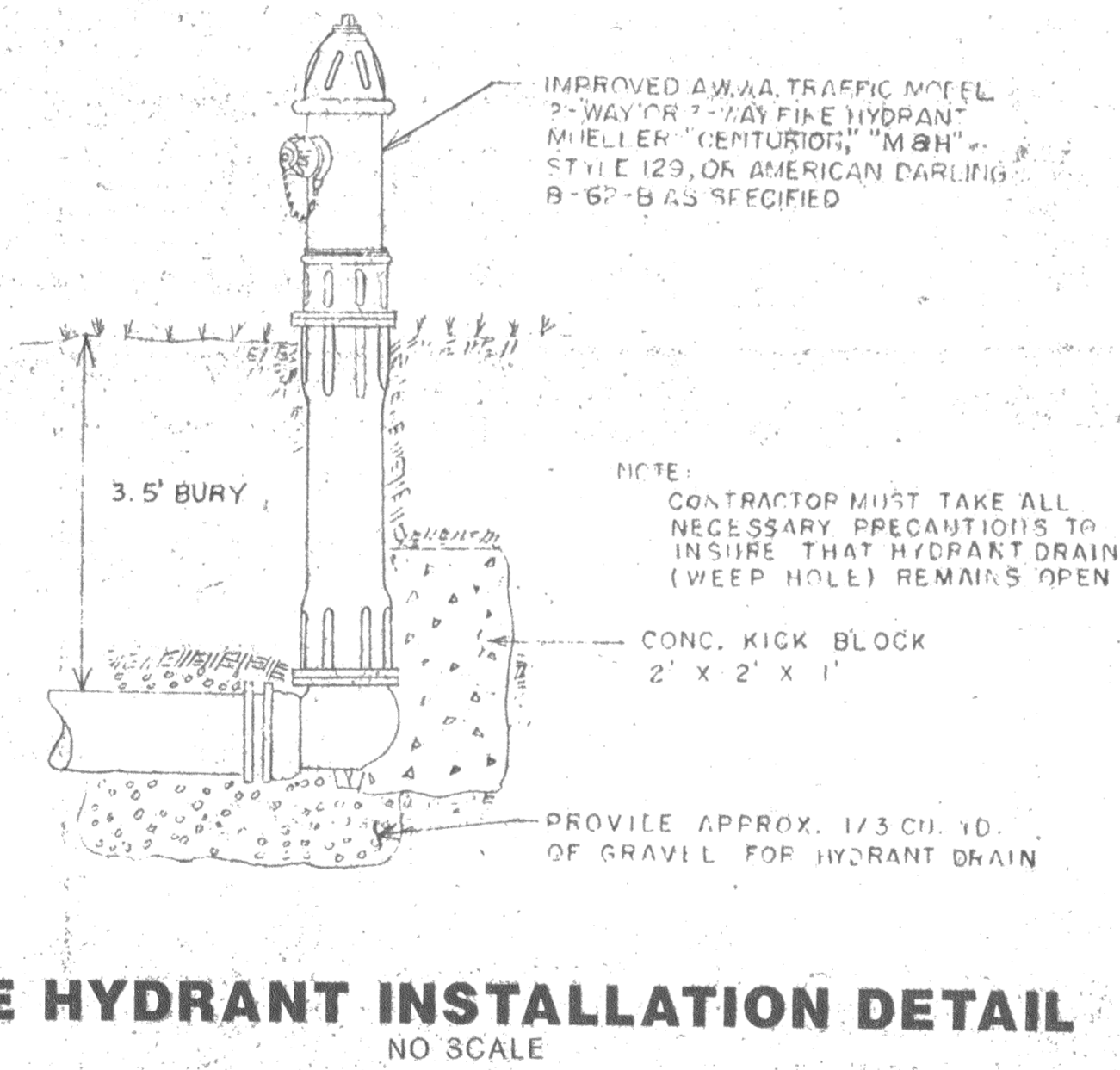
TYPICAL WATER MAIN INSTALLATION DETAILS
 NO SCALE



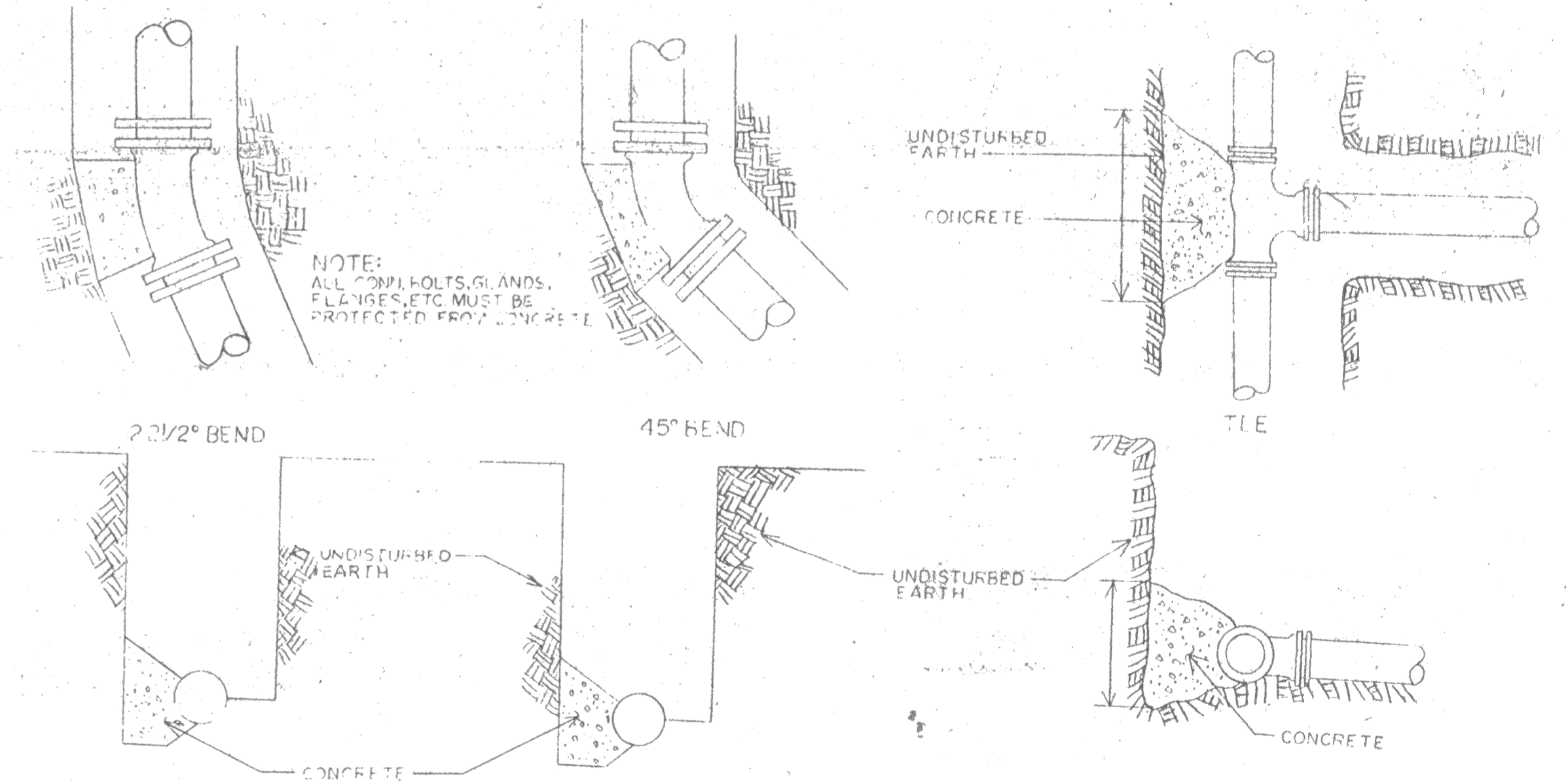
GATE VALVE W / THRUST BLOCK DETAIL
 NO SCALE



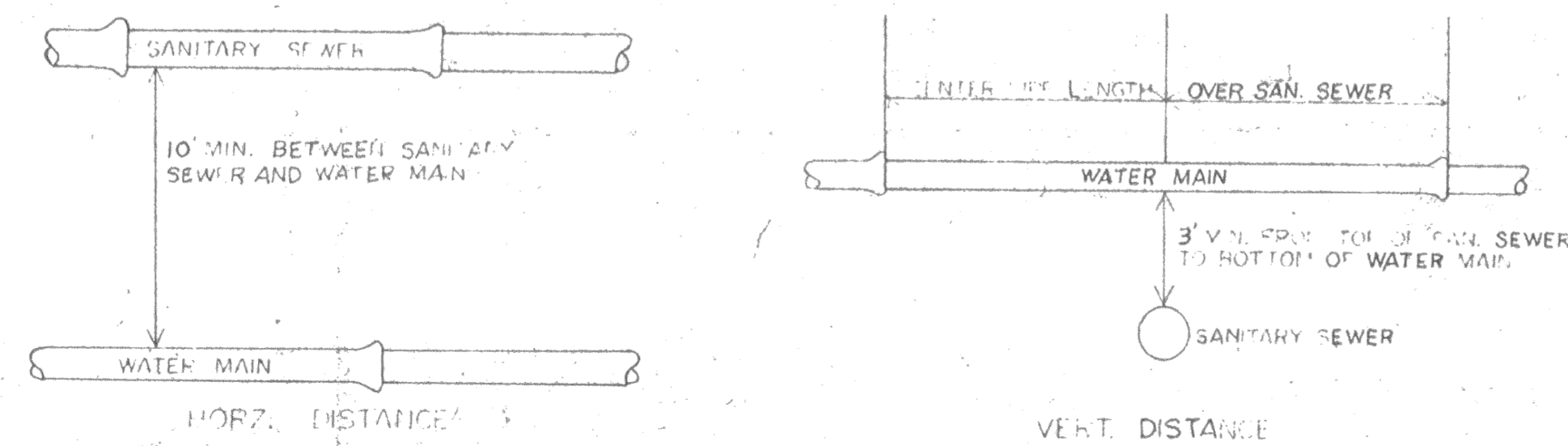
FLUSHING HYDRANT
 NO SCALE



FIRE HYDRANT INSTALLATION DETAIL
 NO SCALE



TYPICAL THRUST BLOCK DETAIL
 NO SCALE



TYPICAL WATER & SEWER SEPARATION
 NO SCALE

MAIN SIZE I.D. IN INCHES	MINI THRUST BLOCK BEARING DIMENSIONS TO BEAR AGAINST UNDISTURBED EARTH				
	45° BEND	22 1/2° BEND	TEE	VALVE	CROSS
2"	.5 x 1'	.5 x 1'	.5 x 1'	.5 x 1'	.5 x 1'
4"	1 x 1'	1 x 1'	2 x 1'	2 x 1'	1 x 1'
6"	1.5 x 1'	1 x 1'	2 x 1'	2 x 1'	1 x 1.5'
8"	2 x 1'	1 x 1'	2 x 2.5'	2 x 2'	1 x 1.5'
10"	2' x 2.5'	1.5' x 2'	2' x 3.5'	2' x 3'	2' x 2'
12"	2' x 3.5'	1.5' x 2.5'	3' x 3.5'	3' x 3'	2' x 2'
16"	3' x 4'	2' x 3'	4' x 4.5'	3' x 4.5'	3' x 3.5'

24
25

ST. CHARLES COUNTY
 PUBLIC WATER SUPPLY DISTRICT
 NO. 2

Reproduced from Drawing by: COCHRAN ENGINEERING COMPANY WASHINGTON, MISSOURI

APPROVED:

TYPICAL WATER INSTALLATION DETAILS

DATE	SCALE	SHEET NO.	REVISIONS
FEB. 88	A = 3/4" = 1"		