

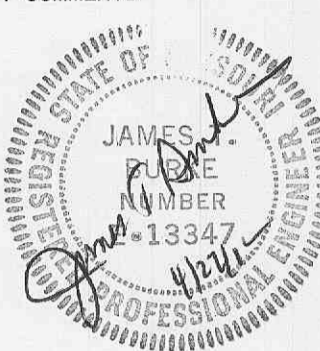
**Farnsworth GROUP**

20 ALLEN AVENUE, SUITE 200  
ST LOUIS, MISSOURI 63119  
(314) 962-7900 / (314) 962-1253 Fax

www.fw.com

ISSUE:

# Date: Description:  
1 3/28/05 PER CITY COMMENTS



**RUBY TUESDAY RESTAURANT**

Lot 2A  
Persimmon Pointe Market  
O'Fallon, Missouri

PROJECT:

RT ST. LOUIS  
FRANCHISE LLC

**RUBY TUESDAY  
PERSIMMON  
POINTE MARKET**

1140 TECHNOLOGY DRIVE  
O'FALLON, MO

Date: 2-03-05

Design/Drawn: BRD

Approved: BRD

Book No.:

SHEET TITLE:

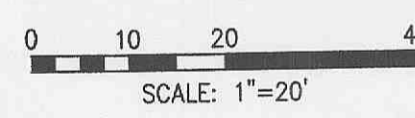
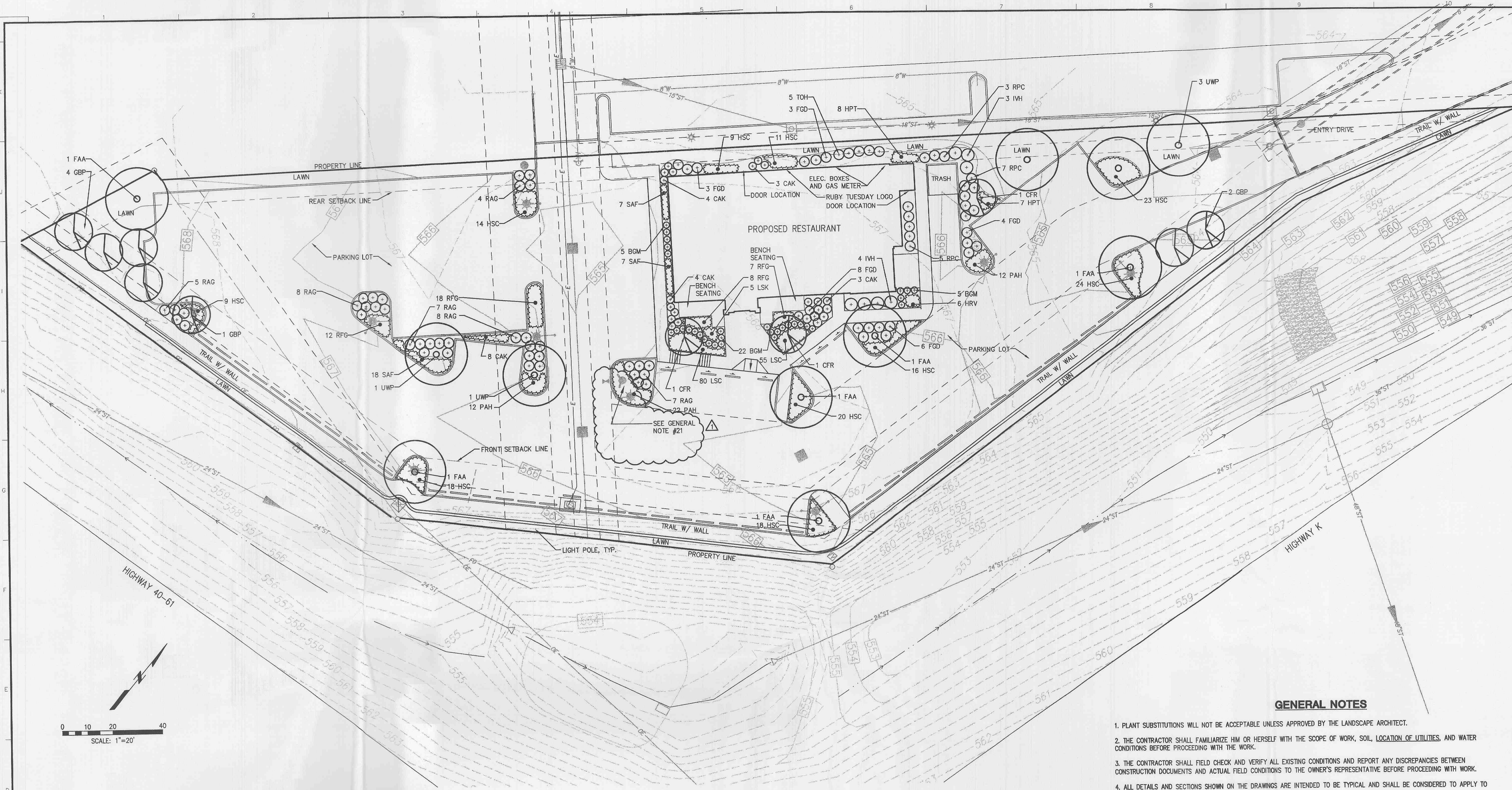
**LANDSCAPING PLAN**

SHEET NUMBER:

**C-9**

SHEET 9 OF 11

Project No.: 204390



**PLANT SCHEDULE**

QTY.	SYM.	SCIENTIFIC NAME	COMMON NAME	SIZE	SPACING
32	BGM	Buxus x 'Green Mound'	Green Mound Boxwood	5 GAL.	---
3	CFR	Cornus florida var. rubra	Pink Flowering Dogwood	2" B.B.	---
22	CAK	Calamagrostis x acutifolia 'Karl Foerster'	Karl Foerster Feather Reed Grass	1 GAL.	2.5'
6	FAA	Fraxinus americana 'Autumn Applause'	Autumn Applause White Ash	2" B.B.	---
24	FGD	Fothergilla gardenii	Dwarf Fothergilla	3 GAL.	---
7	GBP	Ginkgo biloba 'Princeton Sentry'	Princeton Sentry Ginkgo	2" B.B.	---
15	HPT	Hosta 'Patriot'	Patriot Hosta	1 GAL.	2.5'
6	HRV	Heuchera 'Ruby Veil'	Ruby Veil Carol Bells	1 GAL.	2.5'
162	HSC	Hemerocallis 'Strawberry Candy'	Strawberry Candy Daylily	1 GAL.	2.5'
9	IVH	Itea virginica 'Henry's Garnet'	Henry's Garnet Sweetspire	5 GAL.	---
135	LSC	Liriope spicata	Creeping Lily Turf	1 QT.	15"
5	LSK	Liatris spicata 'Kobold'	Kobold Gayfeather	1 GAL.	2.5'
46	PAH	Pennisetum alopecuroides 'Hameln'	Hameln Fountain Grass	1 GAL.	---
39	RAG	Rhus aromatica 'Grow-low'	Grow-low Sumac	3 GAL.	---
30	RFG	Rudbeckia fulgida var. sullivantii 'Goldsturm'	Goldsturm Black-Eyed Susan	1 GAL.	2.5'
15	RPC	Rhododendron poukhanense 'Compacta'	Compact Korean Azalea	3 GAL.	---
32	SAF	Sedum x 'Autumn Fire'	Autumn Fire Stonecrop	1 GAL.	2.5'
5	TOH	Thuja occidentalis 'Holmstrup'	Holmstrup Arborvitae	6" B.B.	---
5	UWP	Ulmus wilsoniana 'Prospector'	Prospector Elm	2" B.B.	---

\*WHERE SHOWN IN MASS ONLY.

**PLANTING CALCULATIONS**

TOTAL L.F. STREET FRONTAGE: 696.85 L.F.  
TREES REQUIRED (1/40 L.F.): 17  
TOTAL LANDSCAPED OPEN SPACE  
(INCLUDING PARKING LOT ISLANDS): 12,400 S.F.  
TREES REQUIRED: 4  
TOTAL TREES REQUIRED: 21  
TOTAL TREES PROVIDED: 21

\*DUE TO THE TRAIL & WALL LIMITING THE AVAILABLE FRONT YARD SPACE FOR TREE PLANTING, A PORTION OF THOSE REQUIRED TREES ARE PLANTED THROUGHOUT THE SITE.

NOTE: IRRIGATION AND/OR HOSE CONNECTIONS TO BE PROVIDED.

**GENERAL NOTES**

1. PLANT SUBSTITUTIONS WILL NOT BE ACCEPTABLE UNLESS APPROVED BY THE LANDSCAPE ARCHITECT.
2. THE CONTRACTOR SHALL FAMILIARIZE HIM OR HERSELF WITH THE SCOPE OF WORK, SOIL, LOCATION OF UTILITIES, AND WATER CONDITIONS BEFORE PROCEEDING WITH THE WORK.
3. THE CONTRACTOR SHALL FIELD CHECK AND VERIFY ALL EXISTING CONDITIONS AND REPORT ANY DISCREPANCIES BETWEEN CONSTRUCTION DOCUMENTS AND ACTUAL FIELD CONDITIONS TO THE OWNER'S REPRESENTATIVE BEFORE PROCEEDING WITH WORK.
4. ALL DETAILS AND SECTIONS SHOWN ON THE DRAWINGS ARE INTENDED TO BE TYPICAL AND SHALL BE CONSIDERED TO APPLY TO SIMILAR CONDITIONS ELSEWHERE.
5. PLANT SPACING WILL BE SCALED ON PLAN UNLESS NOTED OTHERWISE.
6. SPREAD THREE INCHES OF SHREDDED HARDWOOD MULCH WITH PRE-EMERGENCE HERBICIDE IN ALL PLANTING BEDS.
7. FORM PLANTING MIX FOR ALL TREE AND SHRUB PITS AND PLANTING BEDS BY THOROUGHLY MIXING EXCAVATIONS AND COMPOST (pH OF 5.0 TO 6.5) AT A 3:1 RATIO AND PLACING INTO PIT EXCAVATED AS SHOWN IN LANDSCAPE DETAILS.
8. FINISH GRADES IN PLANTING BEDS ARE TO BE SMOOTH AND PROVIDE POSITIVE DRAINAGE PRIOR TO PLANT, ROCK MULCH, AND LAWN INSTALLATION.
9. CONTRACTOR IS TO PREVENT DAMAGE TO CURBS AND PAVEMENTS ADJACENT TO CONSTRUCTION.
10. PROVIDE A ONE YEAR WARRANTY ON ALL PLANTS. WARRANTY INCLUDES REPLACING ANY PLANT WHICH IS 25% OR MORE DEAD, DISEASED, OR DISFIGURED ONCE DURING THE WARRANTY PERIOD.
11. REMOVE ANY EXISTING LAWN AND OTHER MATERIAL HARMFUL TO PLANT GROWTH PRIOR TO FORMING PLANTING BEDS.
12. PROVIDE A 5' DIAMETER SHREDDED HARDWOOD MULCH RING AROUND TREES NOT LOCATED IN PLANTING BEDS.
13. PROVIDE QUALITY, GENUS, SIZE, SPECIES, AND VARIETY OF PLANTS COMPLYING WITH APPLICABLE REQUIREMENTS OF ANSI Z60.1, "AMERICAN STANDARD FOR NURSERY STOCK."
14. MAINTAIN PLANTINGS AND BEDS BY SPRAYING, WATERING, WEEDING, RESTORING PLANT STAKES, AND GUY SUPPORTS AS REQUIRED TO ESTABLISH HEALTHY PLANTS FOR 30 DAYS FROM SUBSTANTIAL COMPLETION.
15. FINISH GRADE, FERTILIZE, SEED, AND MULCH ALL AREAS DAMAGED BY CONSTRUCTION. WHERE SLOPES EXCEED 1:6, FURNISH AND INSTALL KNITTED STRAW BLANKET.
16. MAINTAIN SEEDED LAWN BY WATERING, WEEDING, REPLANTING, MOWING, AND ROLLING AS REQUIRED TO PROVIDE A UNIFORMLY HEALTHY LAWN FOR 60 DAYS FROM SUBSTANTIAL COMPLETION.
17. IF ANY PROPOSED TREE PLANTINGS, AT MATURE SIZE, WILL CONFLICT WITH EXISTING OVERHEAD LINES CONTACT LANDSCAPE ARCHITECT IMMEDIATELY.
18. ALL PLANT BEDS ABUTTING LAWN AREAS ARE TO RECEIVE SPADE EDGING, SEE DETAIL ON SHEET L2.1.
19. AVOID PLACING PLANTINGS DIRECTLY IN FRONT OF ANY DOWNSPOUT DISCHARGE.
20. CONTRACTOR IS TO COORDINATE FINAL LOCATIONS OF PLANTINGS WITH UTILITIES, ELECTRIC BOXES, AND GAS METER, TO PROVIDE SCREENING.
21. THERE SHALL BE NO OBSTRUCTIONS I.E., PLANTINGS, BUSHES, TREES, SIGNS, LIGHT STANDARDS, MAILBOXES, ETC. WITHIN SIX (6') FEET OF ANY FIRE HYDRANT AND OR FIRE DEPARTMENT CONNECTION TO AN AUTOMATIC SPRINKLER SYSTEM.