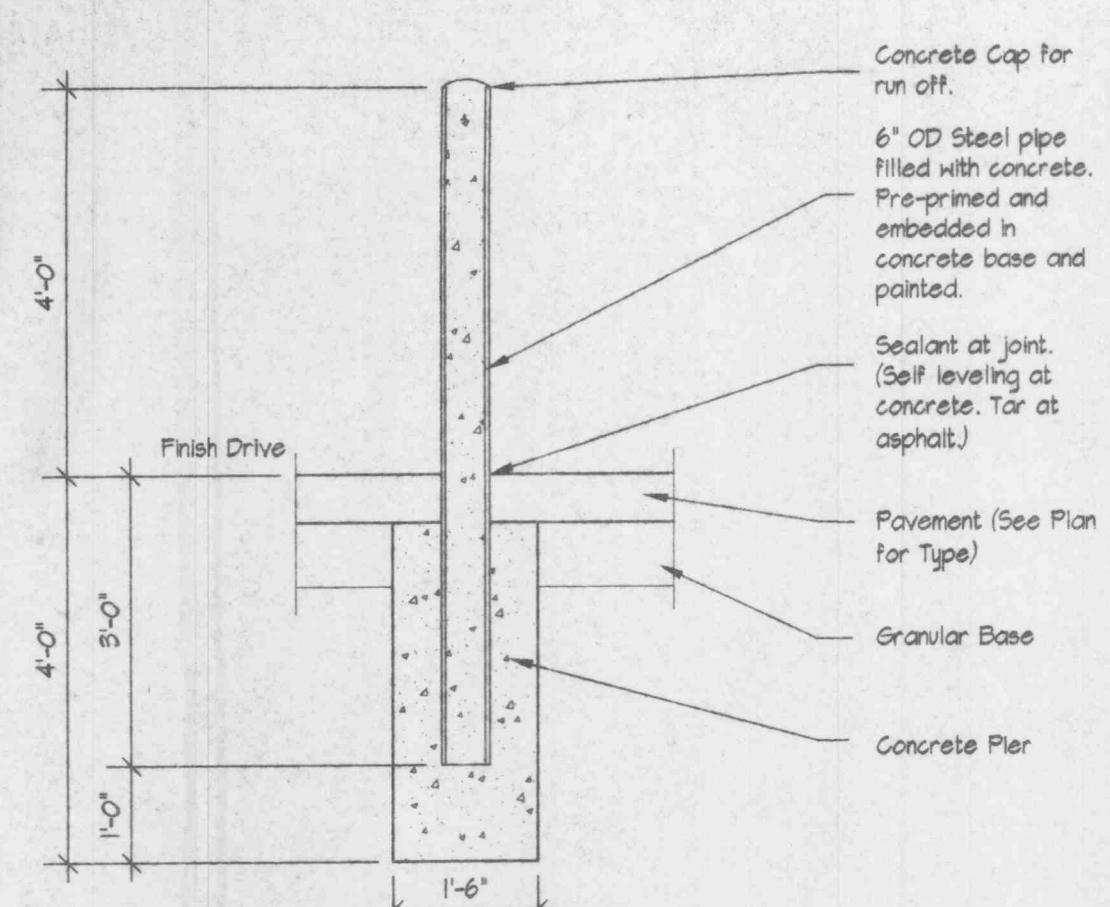


Concrete Joint Details

Scale: 3/4" = 1'-0"

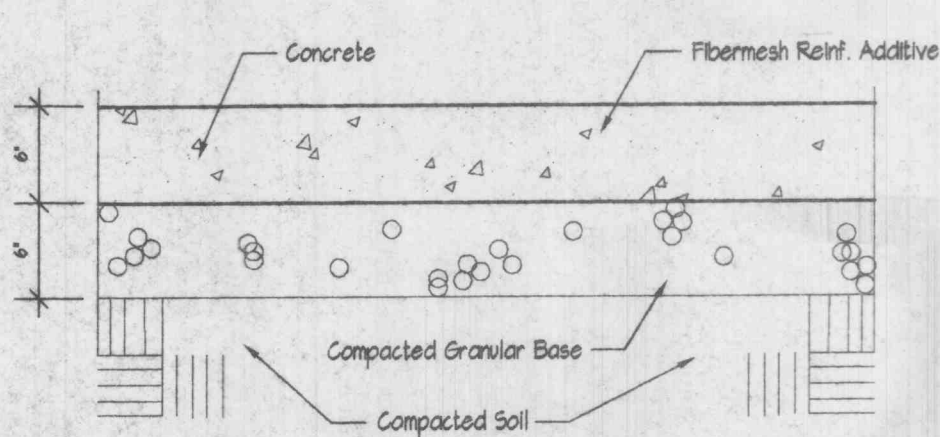
XREF\020302C4



Pipe Ballard Detail

Scale: 1/2" = 1'-0"

XREF\020503A1

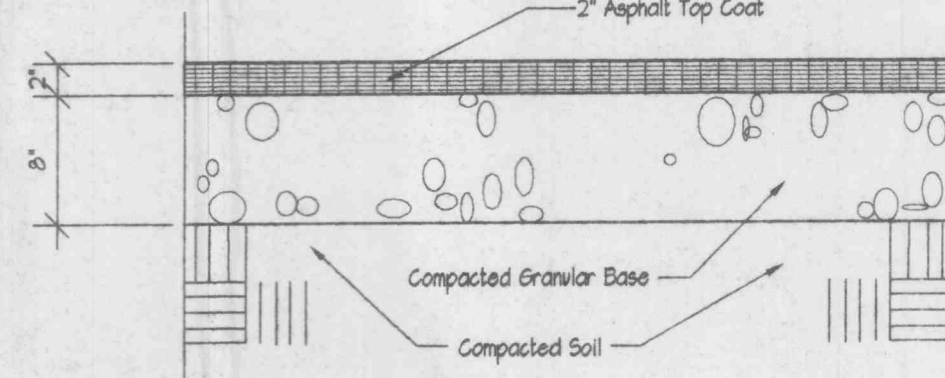


See Detail 11/61-01 for Joint Spacing Standards

Concrete Pavement

Scale: 1" = 1'-0"

XREF\020302B1

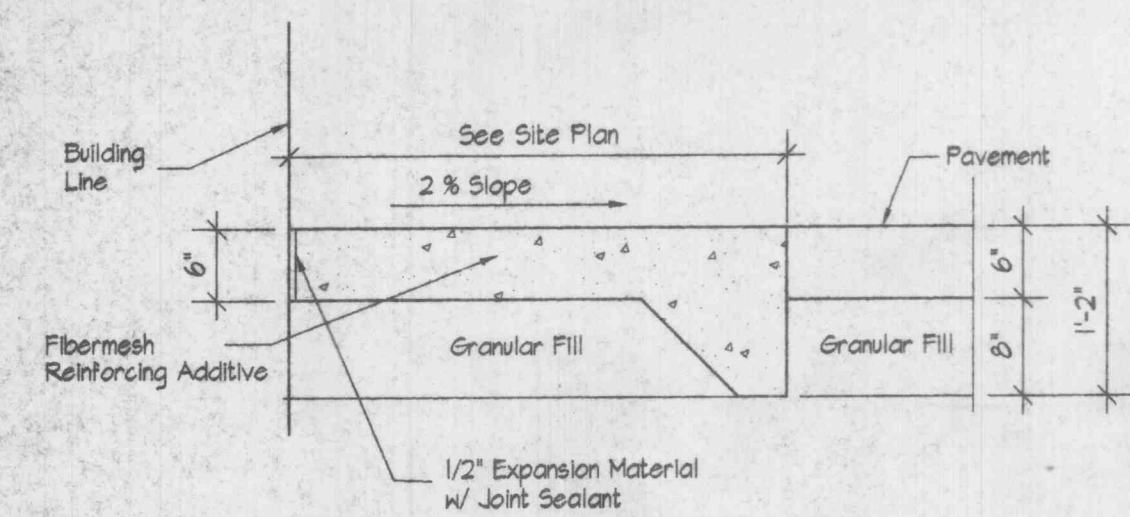


This design is suitable for standard automobile parking and traffic with occasional semi tractor / trailer traffic.

Asphalt Conc. Pavement

Scale: 1" = 1'-0"

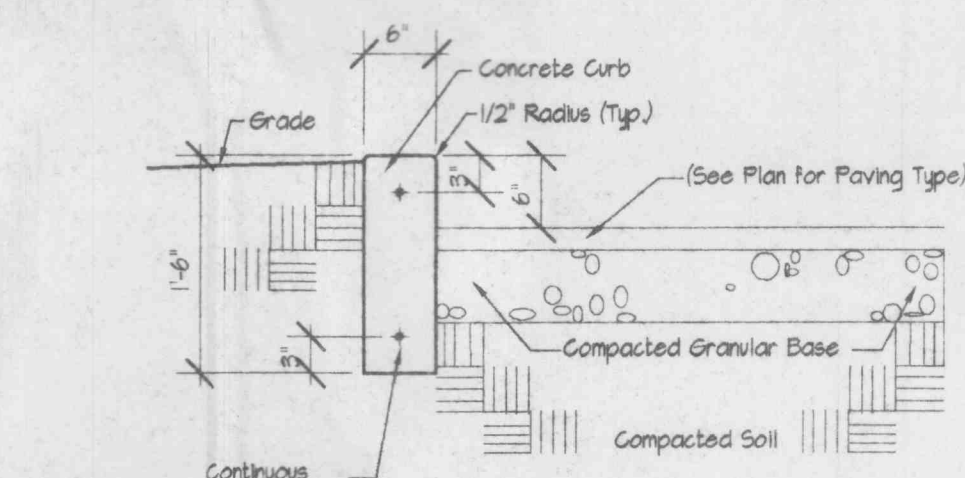
XREF\020302A2



Conc. Apron/Walk Detail

Scale: 3/4" = 1'-0"

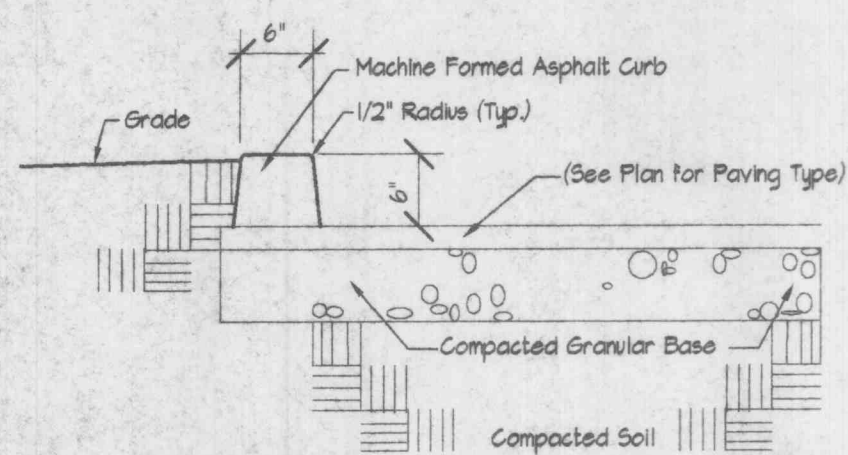
XREF\020302C1



Conc. Curb Detail

Scale: 3/4" = 1'-0"

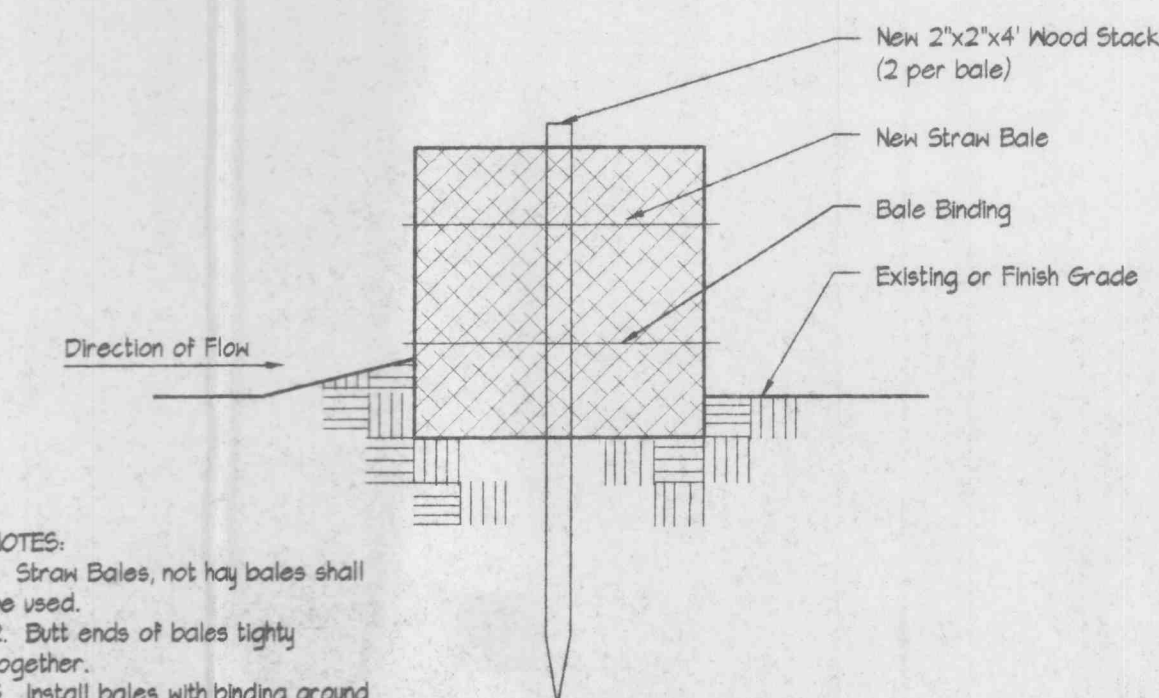
XREF\020303A1



Asphalt Curb Detail

Scale: 3/4" = 1'-0"

XREF\020303B1

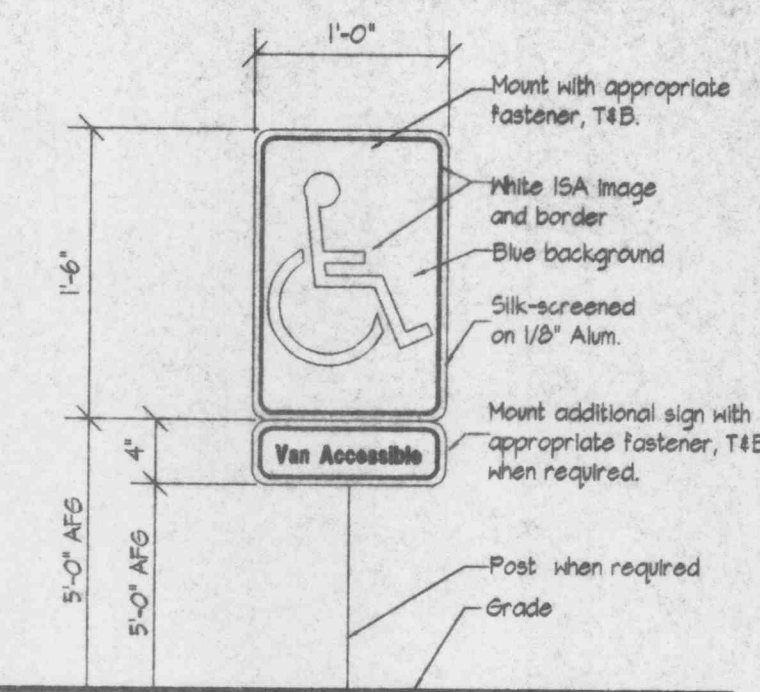


NOTES:  
1. Straw Bales, not hay bales shall be used.  
2. Butt ends of bales tightly together.  
3. Install bales with binding around sides, not top and bottom.  
4. Fill any gap between bales by wedging loose straw between them.

Sediment Barrier

Scale: 3/4" = 1'-0"

020101A1

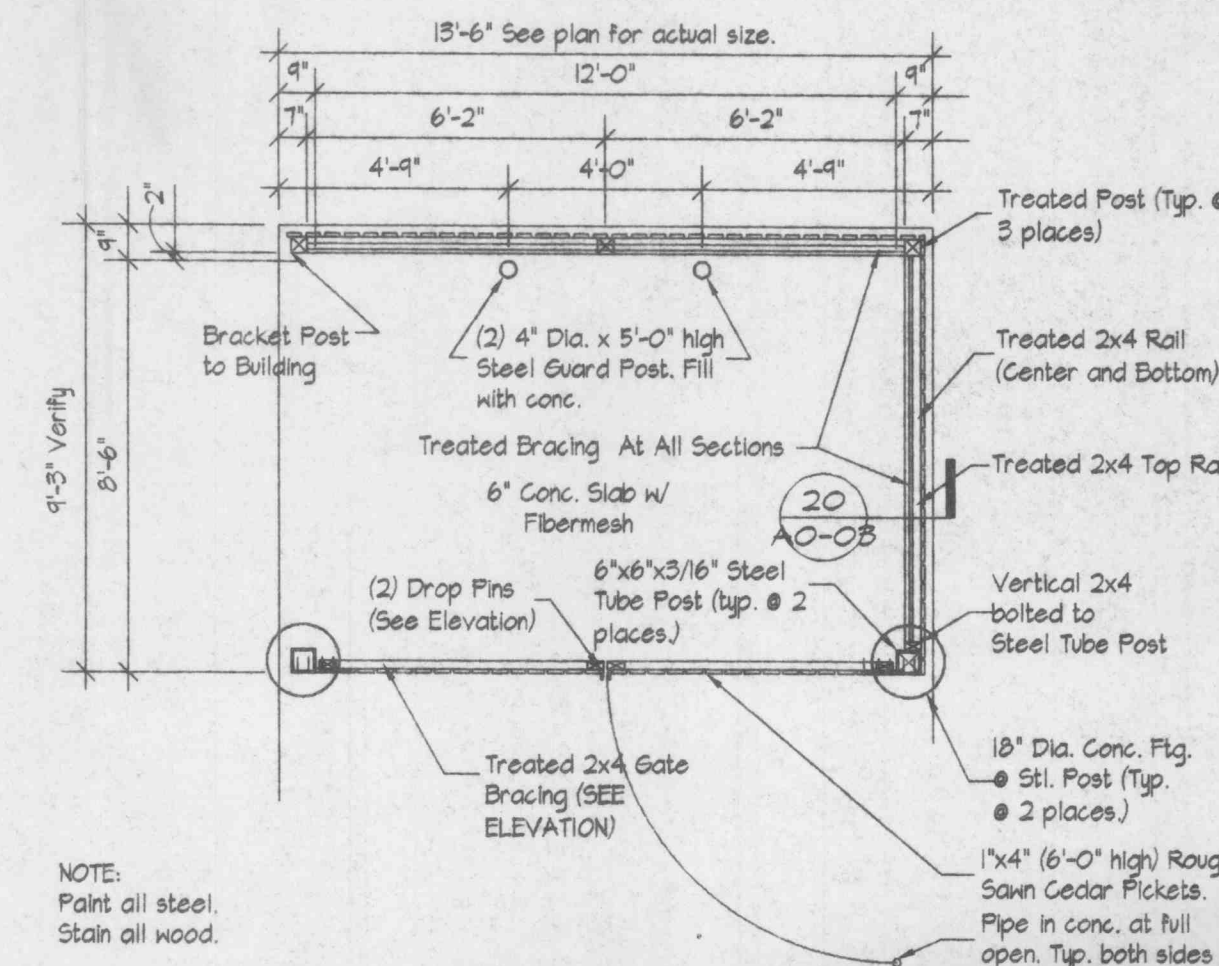


NOTES:  
Sign shall be vertically mounted on a post or wall surface at front center of the parking space. No more than 6'-0" horizontally from the front of the parking space.  
The first accessible parking space shall be 'Van Accessible' and shall include an additional sign as illustrated above.

Accessible Parking Sign

Scale: 1" = 1'-0"

XREF\021042A1

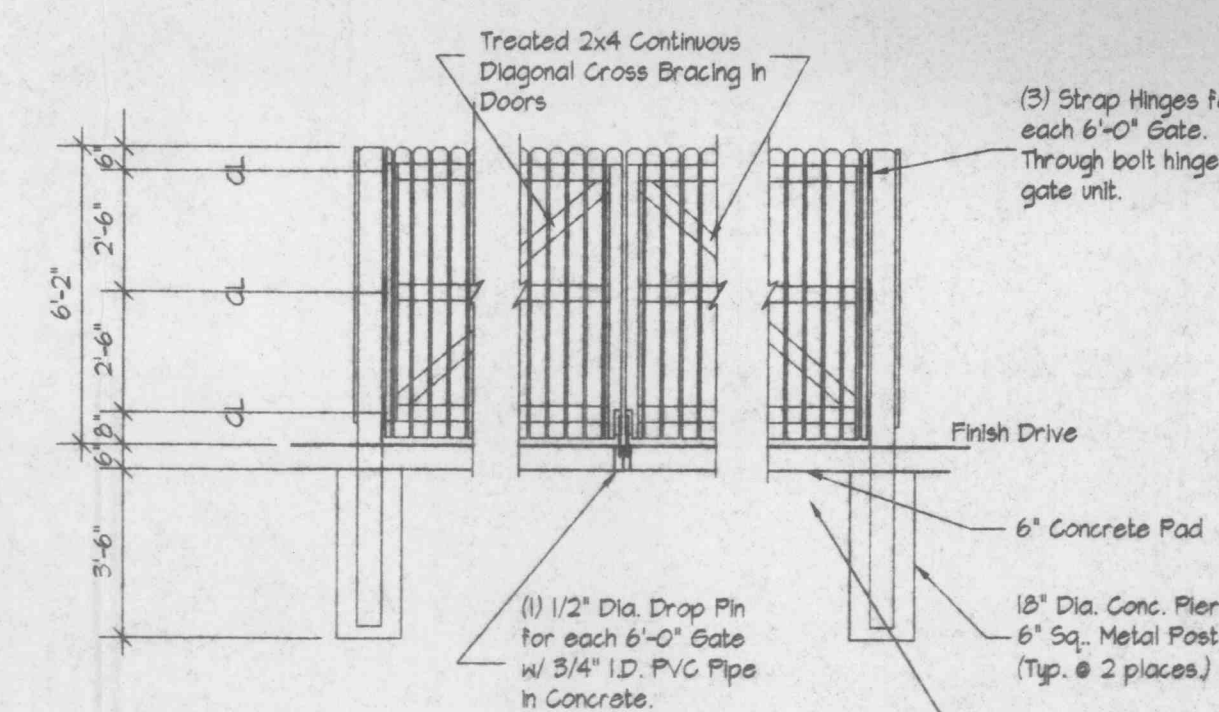


NOTE:  
Paint all steel.  
Stain all wood.

Trash Enclosure Plan

Scale: 1/4" = 1'-0"

XREF\021117A1

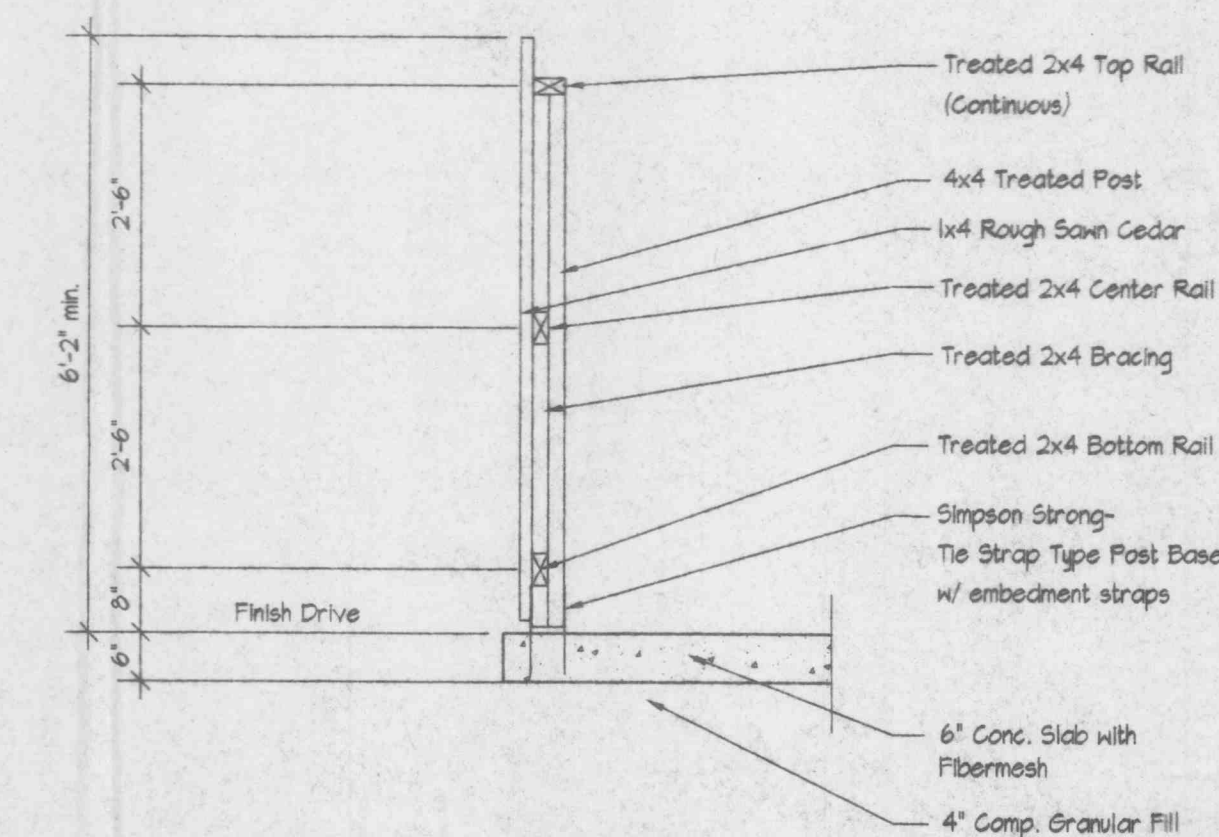


NOTE:  
(2) Nails in pickets at each point of frame contact.

Trash Enclosure Elevation

Scale: 1/4" = 1'-0"

XREF\021117A2



Enclosure Detail

Scale: 1/2" = 1'-0"

XREF\021117A3



KERN RUDER  
Architecture, P.C.  
443 North New Ballas Road, Suite 200  
St. Louis, Missouri 63141-6832  
314 - 636-2215 Fax 314 - 682-2216



Jonathan E. Ruder A-5074  
The Architect shall not be responsible for any omissions from these Construction Documents during or after construction unless approved in writing by the Architect.  
This set of Construction Documents, as an instrument of service, is and remains the property of Kern-Ruder Architecture, P.C. and its assignees.  
These Construction Documents shall not be used for any work other than that for which it was prepared.

**Ruder Automotive Service Facility**  
Owner: John E. Ruder  
6311 Westminster Pl.  
St. Louis, MO 63130  
Project Address: 2694 Babbie Creek Lane  
O'Fallon, MO 63366

No.	Addendum / Change Order	Date	Signature
ACM #2		6-8-16	JER
Detail 11/AO-03			

Project Number  
**9604-RASF**  
File Name:  
RAS\FAC-02\BUILDING  
Revisions

Site Details

**A0-03**

CONTRACT DATE:  
04-30-16

PLACED XREF SCOURING