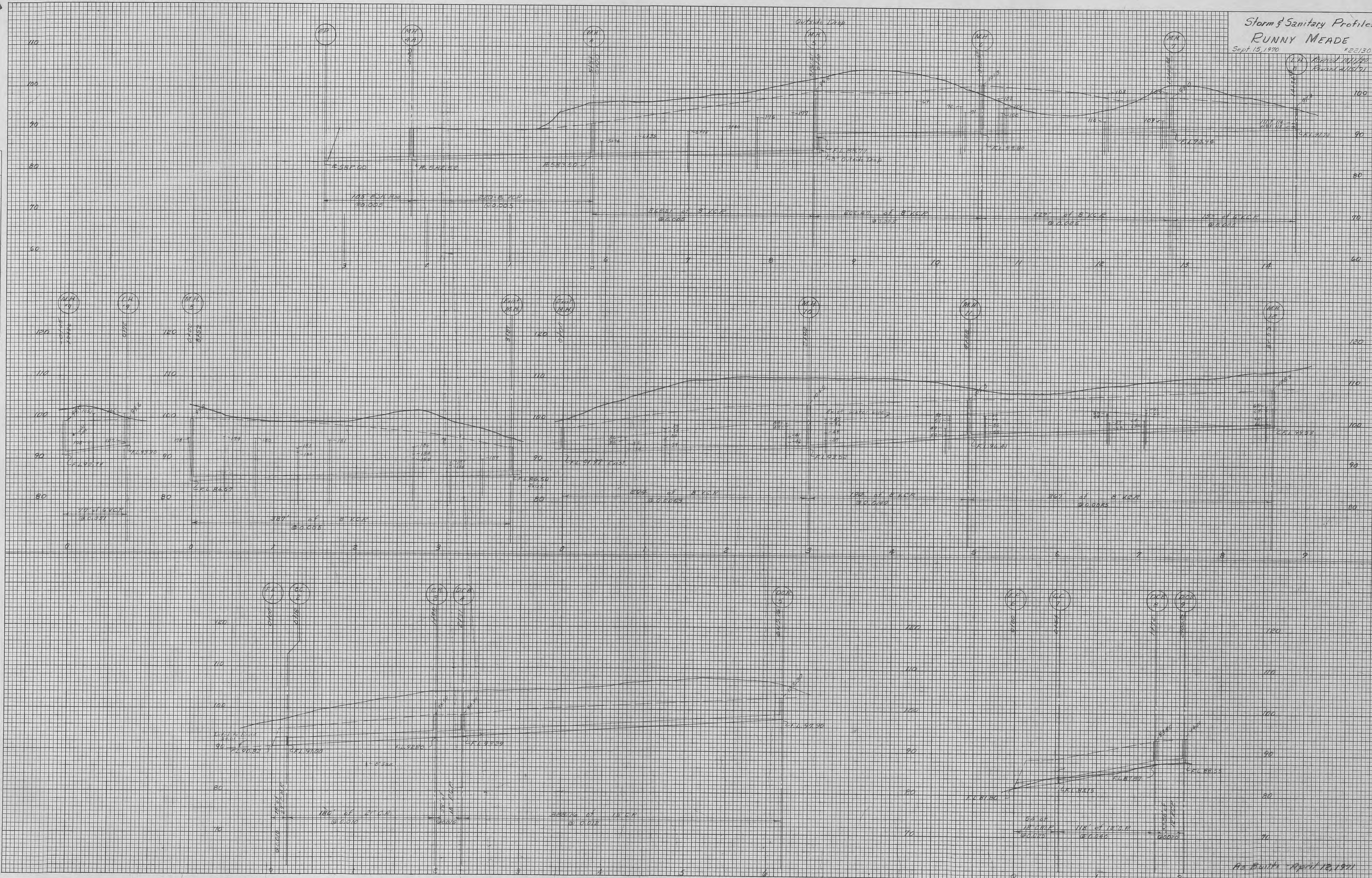


Storm & Sanitary Profiles
RUNNY MEADE
 Sept 15, 1970 #22130
 Revised 11/1/70
 Revised 4/15/71

FINAL SURVEY
 SURVEYED, PLOTTED, CHECKED
 NOTE BOOK NO. _____
 TEMPLATE NO. _____
 AREAS CHECKED _____

ORIGINAL SURVEY
 SURVEYED, PLOTTED, CHECKED
 NOTE BOOK NO. _____
 TEMPLATE NO. _____
 AREAS CHECKED _____



As Built April 18, 1971