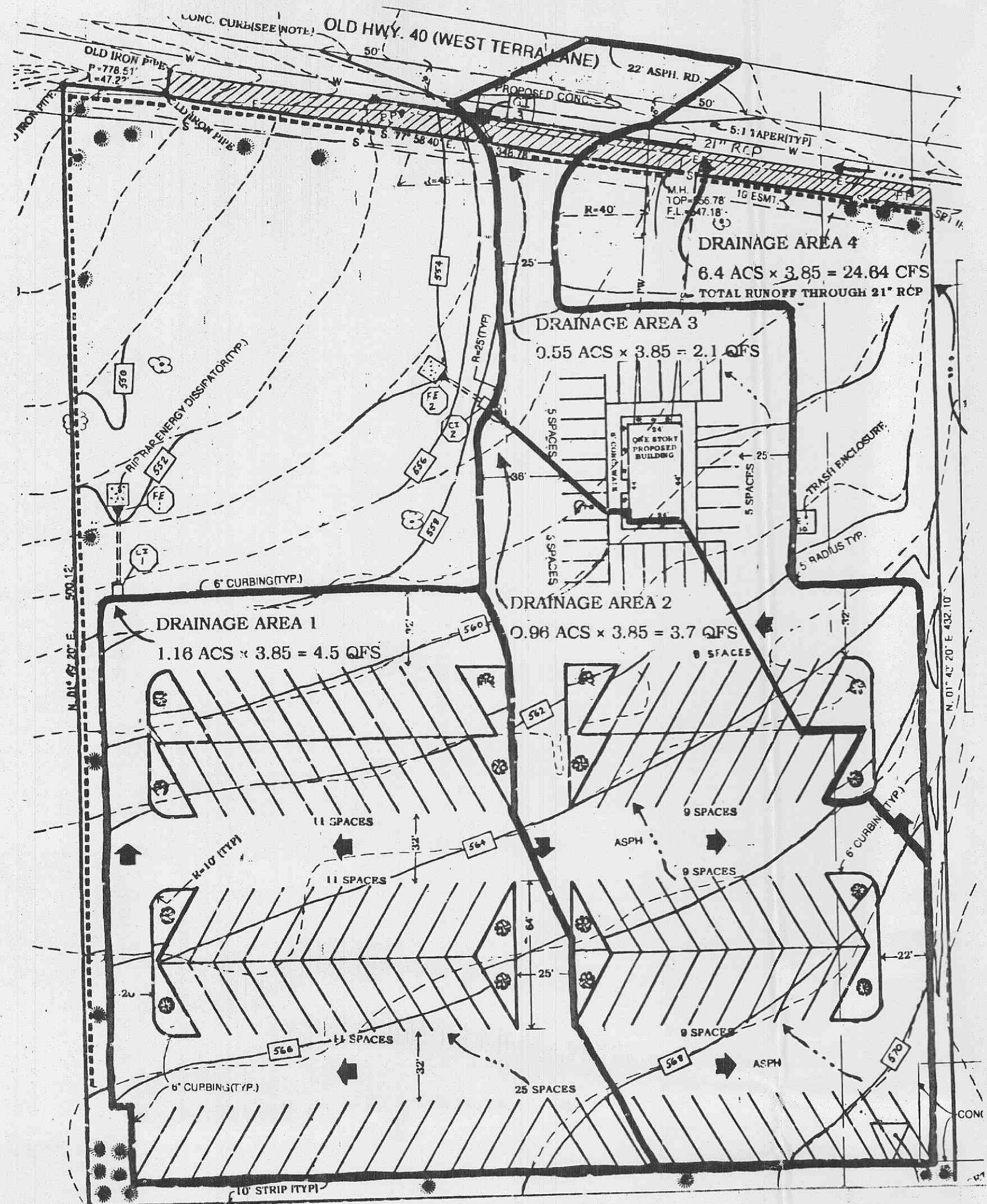


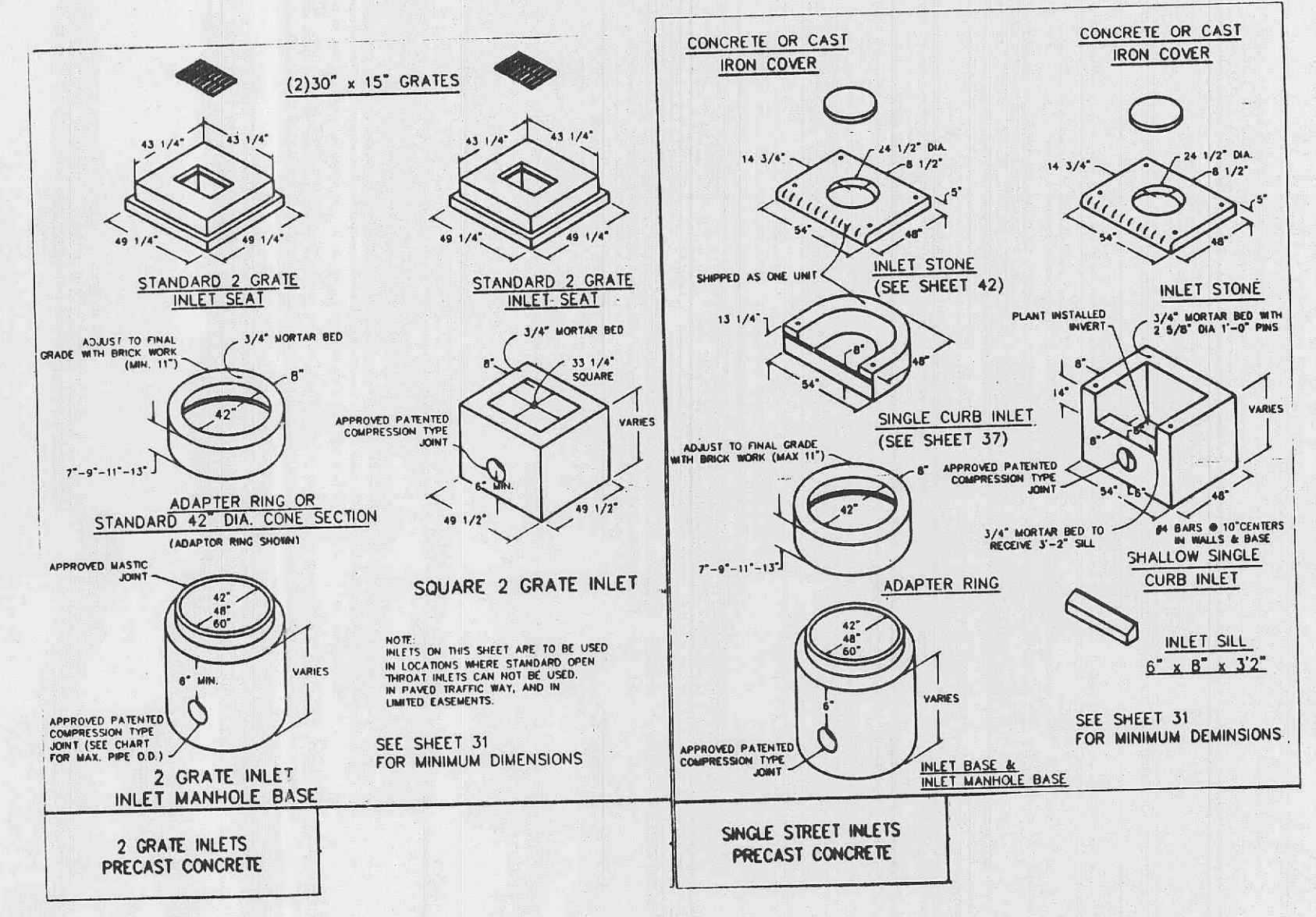
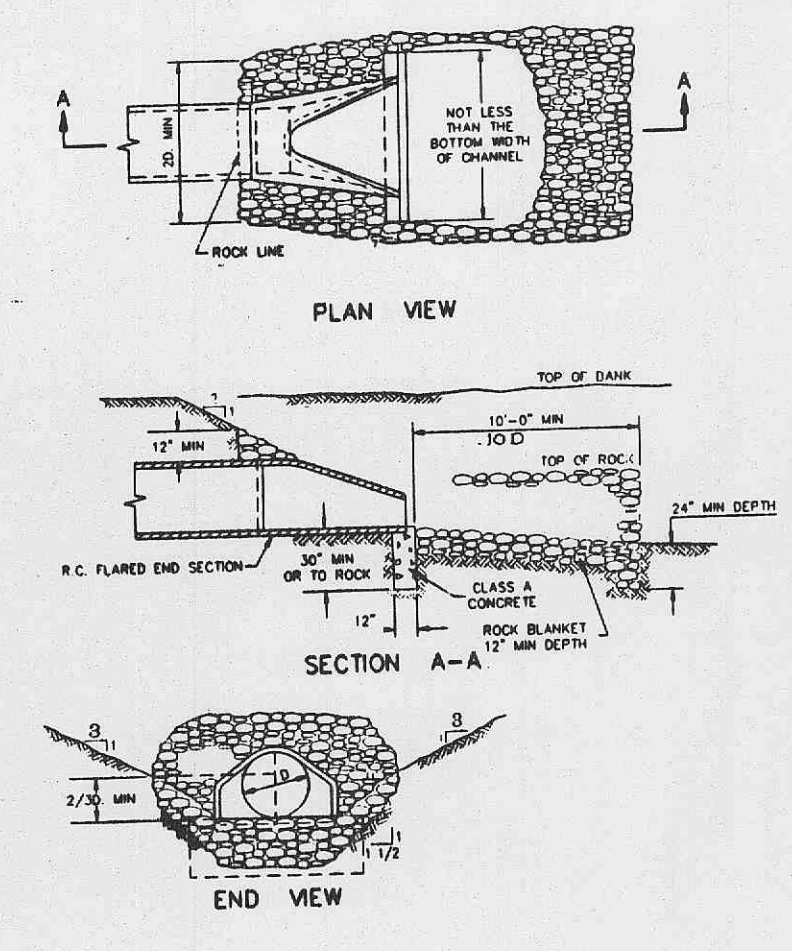
RYDER VEHICLE SALES
 A TRACT OF LAND BEING IN SECTION 25 & 26,
 TOWNSHIP 47 NORTH, RANGE 2 EAST,
 ST. CHARLES COUNTY, MISSOURI

DRAINAGE MAP

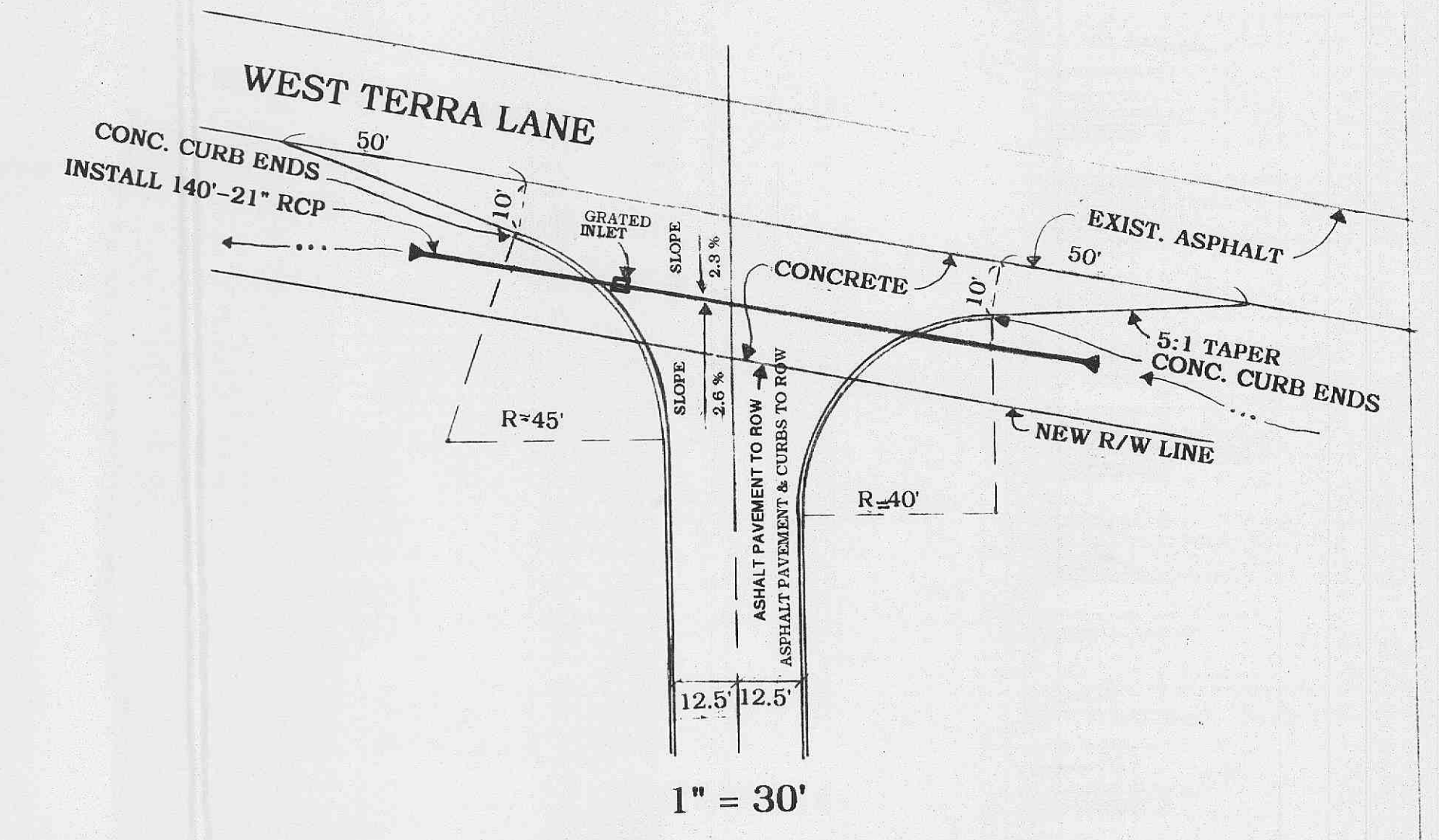


DATE: _____ BY: _____
 SURVEYED: _____
 ALIGNMENT CHECKED: _____
 NOTE BOOK: _____
 NO. _____

DATE: _____ BY: _____
 SURVEYED: _____
 GRADES CHECKED: _____
 NOTE BOOK: _____
 NO. _____

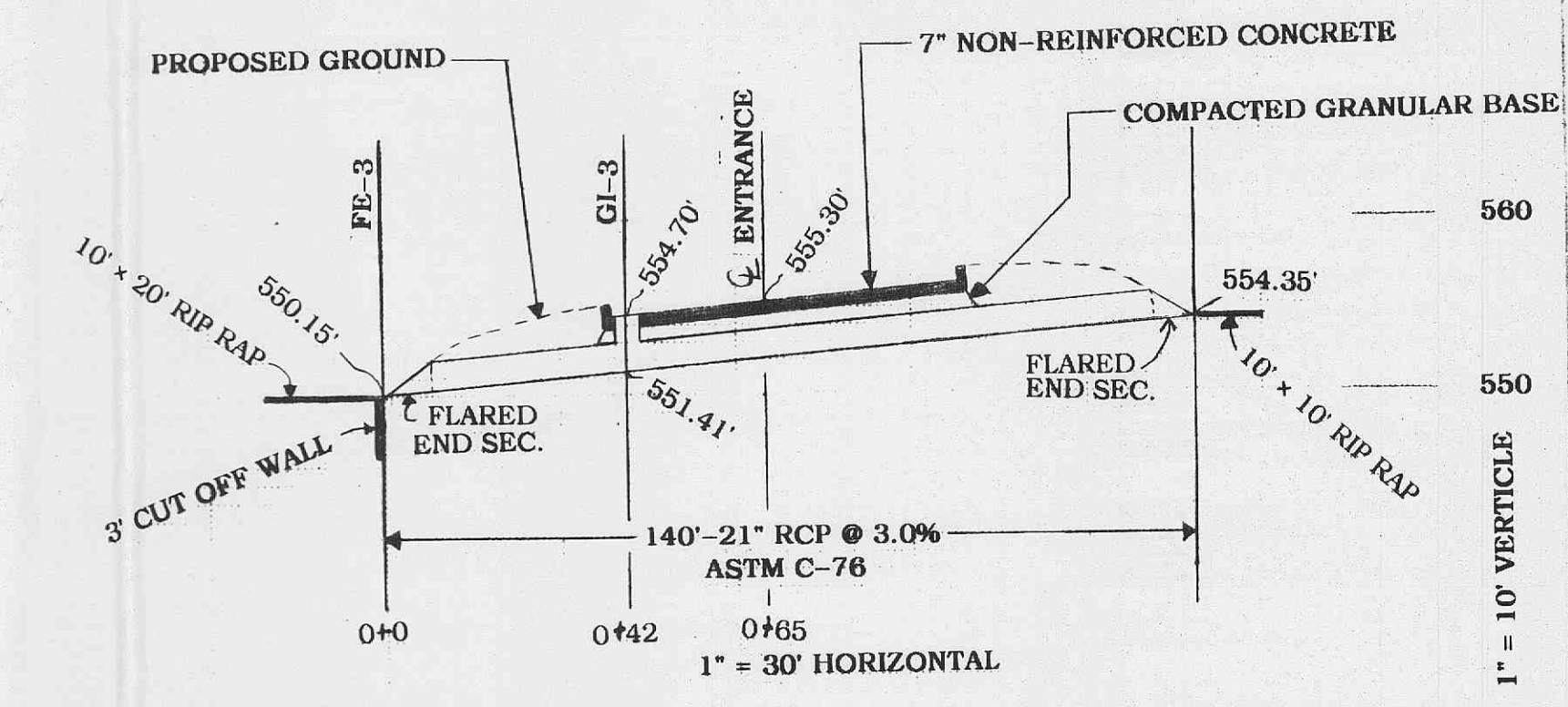
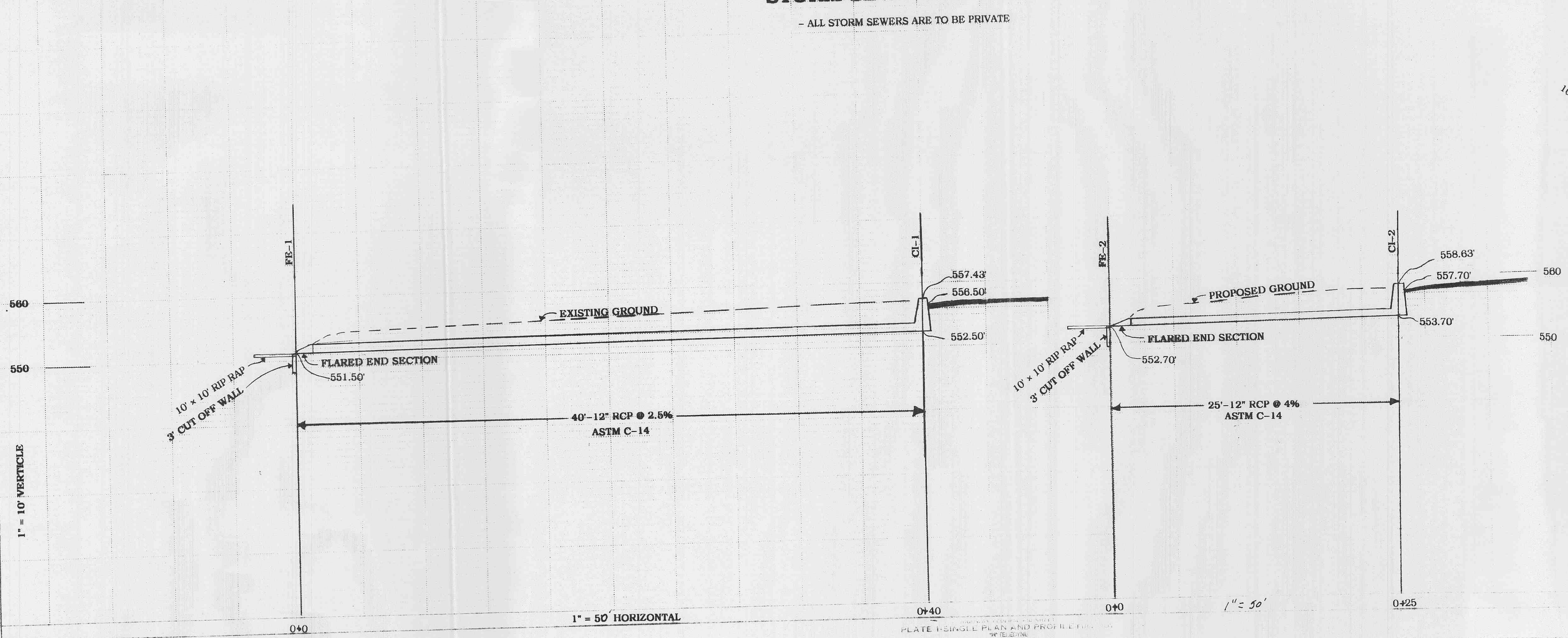


PROPOSED ENTRANCE



STORM SEWER PROFILES

- ALL STORM SEWERS ARE TO BE PRIVATE



PREPARED FOR CHARLES GETTEMEIER

MARCH 2000
 REVISED MARCH 27, 2000 REVISED APRIL 27, 2000

METTS & ASSOCIATES, INC.
 LAND SURVEYORS
 CIVIL ENGINEERS
 P.O. BOX 593 O'FALLON, MO. 63366
 (636) 978-5533 FAX: (636) 978-5534