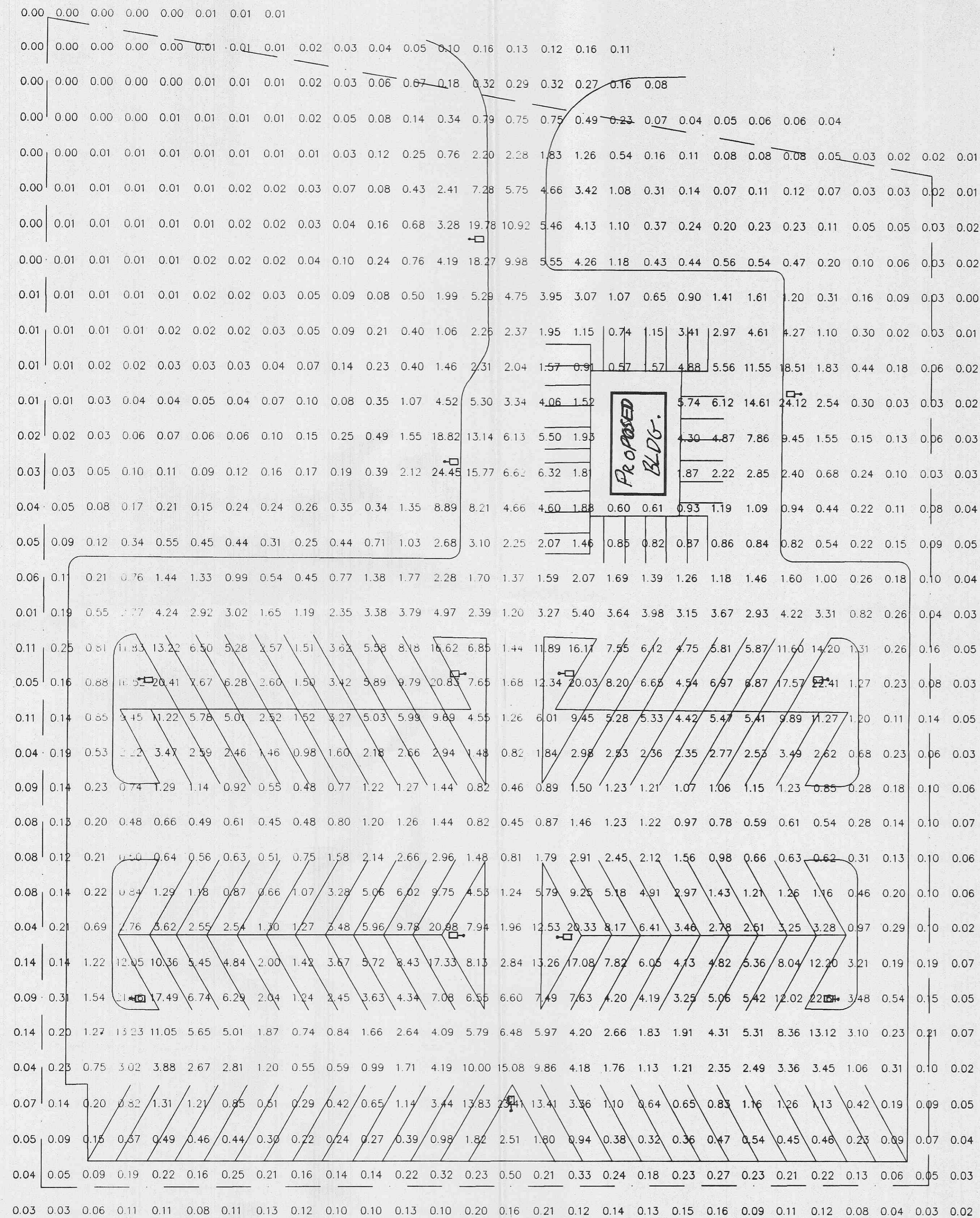
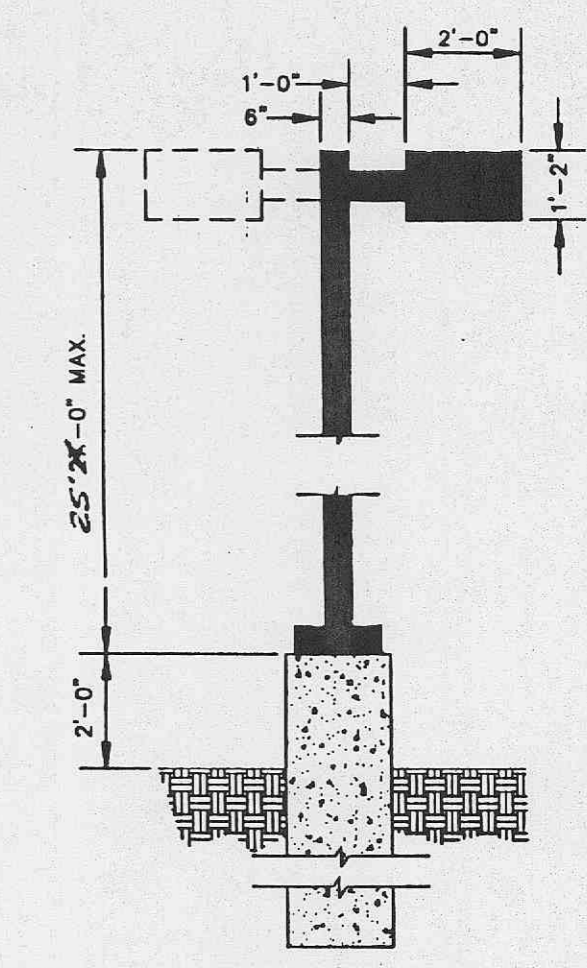


LIGHTING PLANS FOR
RYDER VEHICLE SALES
A TRACT OF LAND BEING IN SECTION 25 & 26,
TOWNSHIP 47 NORTH, RANGE 2 EAST,
ST. CHARLES COUNTY, MISSOURI



□ = LIGHT POLE

LR11-1000M-IV-CS
 1000W MH
 Mounting Height= 24 feet.
 From Pole to Photometric Center= 2 feet.
 IES Candela File: C:\SPLDIES\L4424.IES
 Initial Lumens per Lamp= 107800.
 Light Loss Factor (LLF) = 0.72
 Number Poles this type = 12



NOTE: TYPE AND SIZE MAY VARY.
LIGHT POLE DETAIL
 NOT TO SCALE

BUILDING IS TAKEN AS AN OBSTRUCTION
 Illuminance levels shown are calculated from the luminaire laboratory test data listed. Laboratory tests are made under optimum conditions, with lamp output at rated value, and in accordance with Illuminating Engineering Society approved methods.
 Actual illuminance levels may differ due to variance in lamp lumen output, lamp tilt factor, ballast wattage output, line voltage at ballast, reflector specularities, lamp lumen depreciation, and luminaire dirt depreciation. Light Loss Factor (LLF), if less than 1.00, indicates the anticipated effect of factors other than variable field conditions.

ILLUMINANCE IS IN HORIZONTAL FOOTCANDLES.
 TARGET PLANE AT Z = 0 FEET

Summary

# POINTS	931
AVERAGE	2.23
MAXIMUM	24.45
MINIMUM	0.00

PREPARED FOR CHARLES GETTEMEIER

MARCH 2000
 REVISED MARCH 27, 2000

SITE LIGHTING FOR: RYDER VEHICLE SALES ST. CHARLES CO., MO		3 OF 3
WHITEWAY LIGHTING		
SCALE	DATE	DWG. NO.
1"=30'-0"	03/01/00	WHJ1-1-0C11D
DRAWN BY	DESIGN BY	
J.W.S.		

ORDER # 366799