

NOTE: ALL MATERIAL STOCKPILED ON SITE WILL NEED TO HAVE COMPACTION VERIFIED PRIOR TO PLACEMENT OF ADDITIONAL FILL MATERIALS.

REQUIRED SEDIMENT STORAGE VOLUME:

VOLUME = 0.2 IN.(SITE AREA)
 = (0.2 IN./12 IN./FT.)(11.00 ACRES)(43,560 SQ. FT./ACRE)
 = 7,986 CU. FT.

USE BASE OF DETENTION BASIN TO STORE REQUIRED SEDIMENT VOLUME.

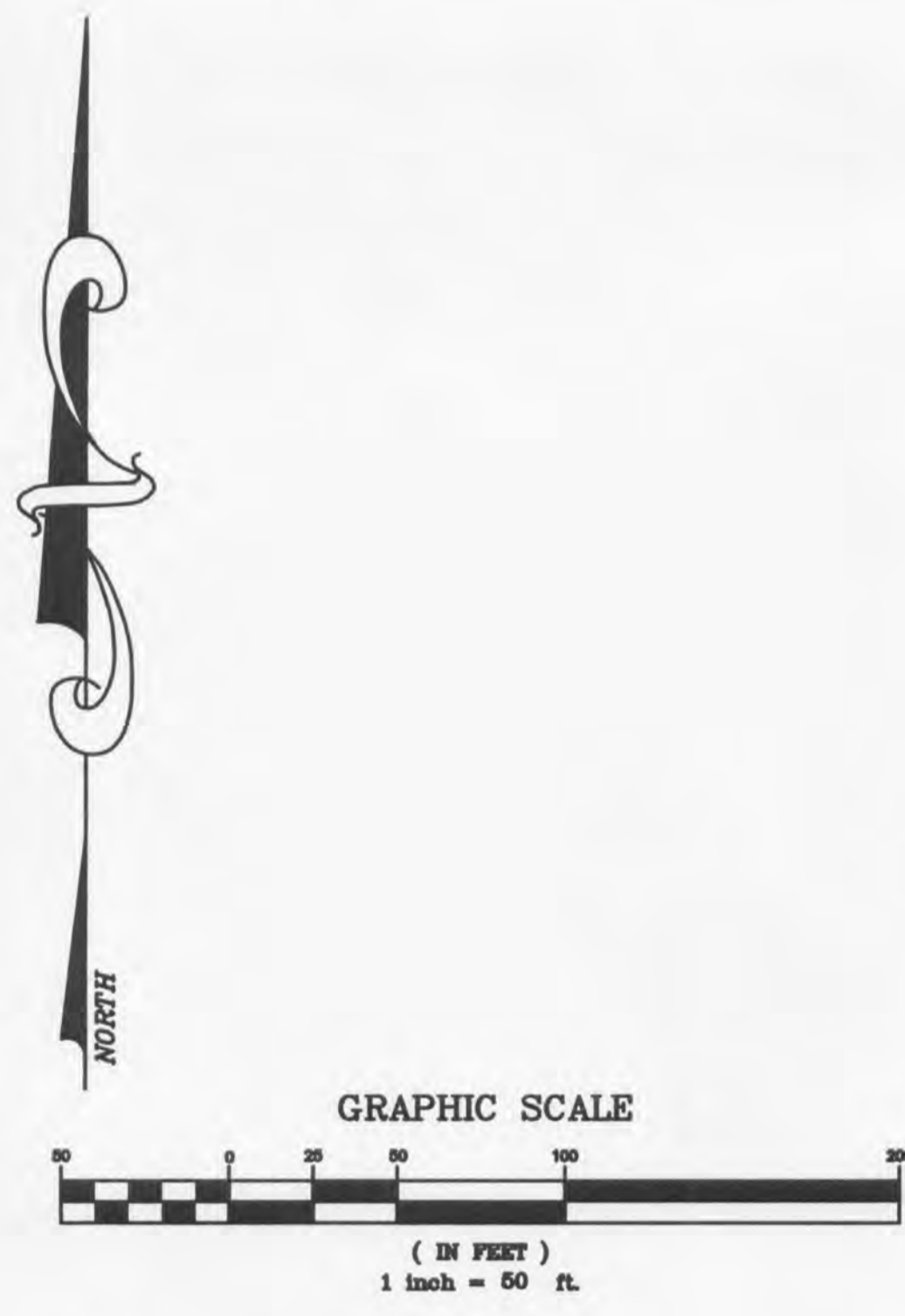
ASSUME 40% VOID SPACE TO DETERMINE DEPTH OF STORAGE.

TOTAL VOL. = STORAGE VOLUME/0.40
 = 7,986 CU. FT./0.40
 = 19,965 CU. FT.

REQUIRED DEPTH:

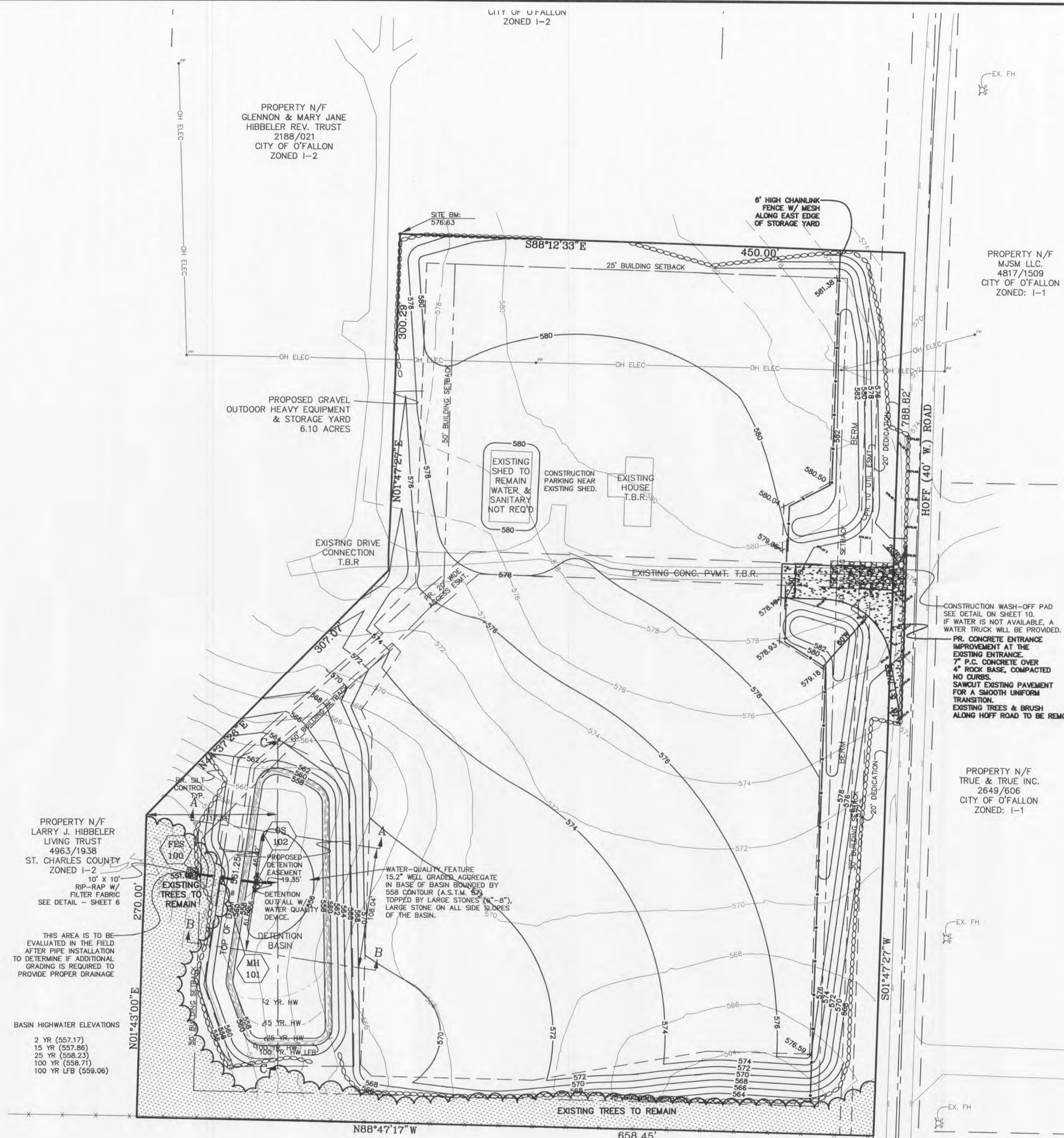
BASE OF DETENTION BASIN AT ELEVATION 558 = 15,812 SQ. FT.

DEPTH = 19,965 CU. FT./15,812 SQ. FT.
 = 1.26 FT. (15.2 IN.)



Call Before you DIG
 TOLL FREE
 1-800-344-7483
 MISSOURI ONE-CALL SYSTEM INC.

Underground facilities, structures and utilities have been plotted from available surveys, records and information, and therefore, do not necessarily reflect the actual existence, non-existence, size, type, number of, or location of these facilities, structures, and utilities. The Contractor shall be responsible for verifying the actual location of all underground facilities, structures, and utilities, either shown or not shown on these plans. The underground facilities, structures, and utilities shall be located in the field prior to any grading, excavation or construction of improvements. These provisions shall in no way absolve any party from complying with the Underground Facility Safety and Damage Prevention Act, Chapter 319, RSMO.



PROPERTY N/F
 LARRY J. HIBBELER
 LIVING TRUST
 4963/1938
 ST. CHARLES COUNTY
 ZONED I-2
 10' x 10'
 RIP-RAP W/
 FILTER FABRIC
 SEE DETAIL - SHEET 6
 THIS AREA IS TO BE
 EVALUATED IN THE FIELD
 AFTER PIPE INSTALLATION
 TO DETERMINE IF ADDITIONAL
 GRADING IS REQUIRED TO
 PROVIDE PROPER DRAINAGE
 BASIN HIGHWATER ELEVATIONS
 2 YR (557.17)
 15 YR (557.86)
 25 YR (558.23)
 100 YR (558.71)
 100 YR LFB (559.06)

PROPERTY N/F
 H & K MACHINE SERVICE
 COMPANY, INC.
 1414/1244
 CITY OF FALLON
 ZONED: I-2

PROPERTY N/F
 TRUE & TRUE INC.
 2649/606
 CITY OF FALLON
 ZONED: I-1

PROPERTY N/F
 DAVID R. & SUSAN R.
 MCCLASKEY
 3994/2278
 CITY OF FALLON
 ZONED: I-2

PROJECT TITLE:

S.A.K. CONST.
 GRADING PLAN

12/23/12	4	CITY COMMENTS
6/29/12	3	REVISED BASIN, STORM SEWER & OVERFLOW STRUCTURE
6/26/11	1	CITY COMMENTS
DATE:	NO.:	REVISION:
MUSLER ENGINEERING COMPANY CIVIL ENGINEERING - PLANNING - LAND SURVEYING 32 Portwest Court, St. Charles, Missouri 63303 Telephone: (636) 916-0444 Fax: (636) 916-9444 CERTIFICATE OF AUTHORITY: ENGINEERING E-1235-D, LAND SURVEYING LS-284-D		
DATE:	DRAWN:	CHECKED:
JUNE 2011	J.R.S.	J.R.S.
PROJECT NO.:	SHEET NO.:	
11-1230	11	

DISCLAIMER OF RESPONSIBILITY
 I hereby specify that the documents intended to be authenticated by my seal are limited to this sheet, and I hereby disclaim any responsibility for all other Drawings, Specifications, Estimates, Reports or other documents or instruments relating to or intended to be used for any part or parts of the architectural or engineering project or survey.



JEFFREY R. SMITH, P.E.
 MO. P.E. # 2001004672

PREPARED FOR:
 S.A.K. CONSTRUCTION, LLC
 MR. CARY SHAW
 864 HOFF ROAD
 O'FALLON, MISSOURI 63306
 TELEPHONE: 636-379-2350
 FAX: 636-379-2461
 E-mail: cshaw@sakcon.com

P & Z No.
 12-10.01 & 12-10.02
 City No.

Page No.
 5