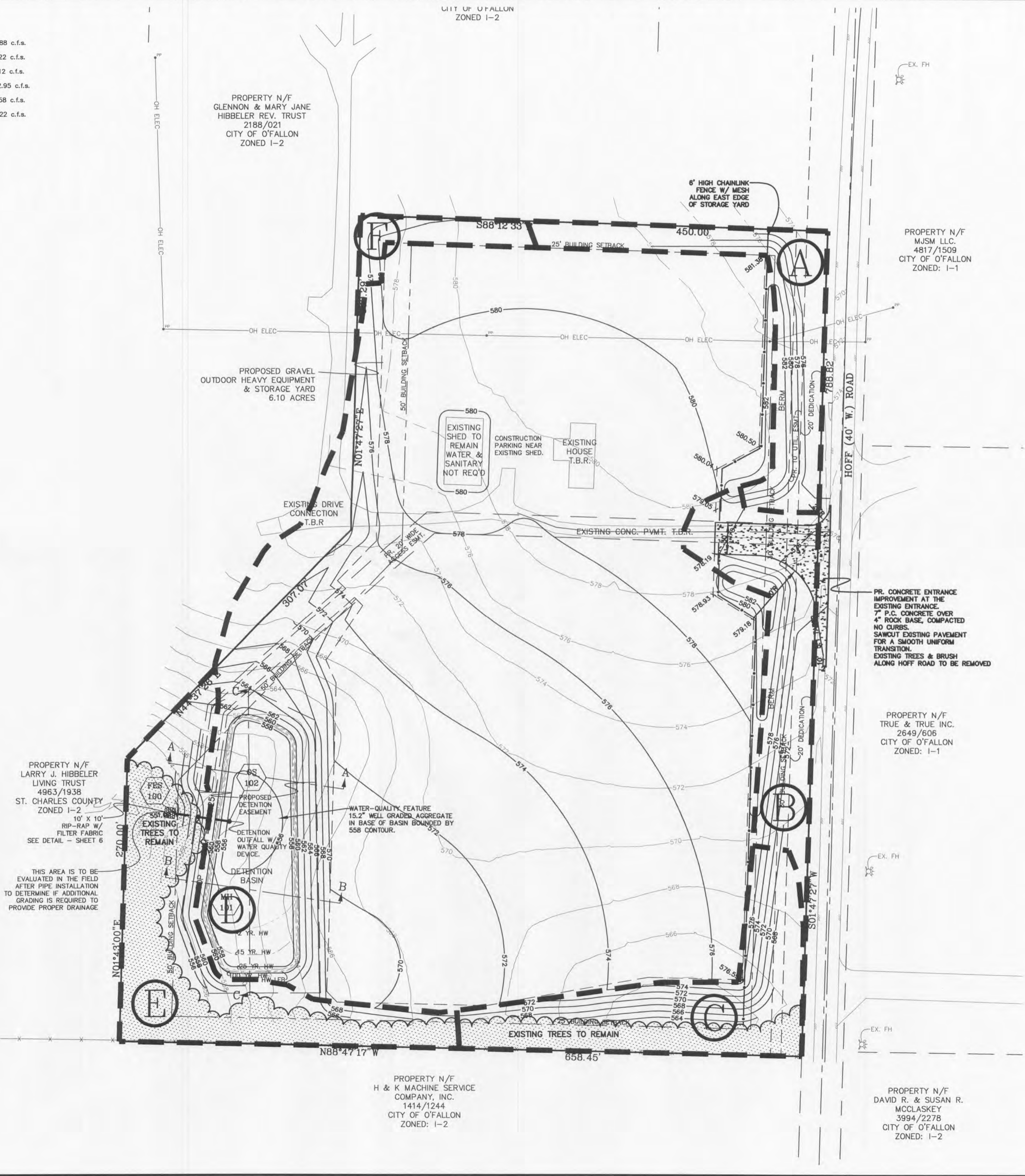


A (TO NORTHEAST - HOFF RD. DITCH)	$(0.02Ac)(3.85) + (0.43Ac)(1.87)$	= 0.88 c.f.s.
B (TO SOUTHEAST - HOFF RD. DITCH)	$(0.11Ac)(3.85) + (0.04Ac)(3.19) + (0.36Ac)(1.87)$	= 1.22 c.f.s.
C (TO SOUTH - FIELD DITCH)	$(0.60Ac)(1.87)$	= 1.12 c.f.s.
D (TO DETENTION BASIN)	$(0.20Ac)(3.85)(OFF-SITE) + (0.05Ac)(3.85) + (6.13Ac)(3.19) + (1.30Ac)(1.87)$	= 22.95 c.f.s.
E (BY-PASS DETENTION TO WEST)	$(0.01Ac)(3.19) + (0.83Ac)(1.87)$	= 1.58 c.f.s.
F (TO NORTHWEST)	$(0.12Ac)(1.87)$	= 0.22 c.f.s.

LOT UP OF FALLON  
ZONED I-2

PROPERTY N/F  
GLENNON & MARY JANE  
HIBBELER REV. TRUST  
2188/021  
CITY OF O'FALLON  
ZONED I-2

PROPERTY N/F  
M.J.S.M. LLC.  
4817/1509  
CITY OF O'FALLON  
ZONED: I-1



Call Before you DIG  
TOLL FREE  
1-800-344-7483  
MISSOURI ONE-CALL SYSTEM INC.

Underground facilities, structures and utilities have been plotted from available surveys, records and information, and therefore, do not necessarily reflect the actual existence, non-existence, size, type, number of, or location of these facilities, structures, and utilities. The Contractor shall be responsible for verifying the actual location of all underground facilities, structures, and utilities, either shown or not shown on these plans. The underground facilities, structures, and utilities shall be located in the field prior to any grading, excavation or construction of improvements. These provisions shall in no way absolve any party from complying with the Underground Facility Safety and Damage Prevention Act, Chapter 319, RSMO.

PROJECT TITLE:  
**S. A. K. CONST.**  
**PROPOSED DRAINAGE AREA**

REVISION:  
8/29/12 3 REVISED BASIN, STORM SEWER & OVERFLOW STRUCTURE  
9/8/11 1 CITY COMMENTS  
DATE: 11/5/12  
**MUSLER ENGINEERING COMPANY**  
MUSLER ENGINEERING - PLANNING - LAND SURVEYING  
32 Portwest Court, St. Charles, Missouri 63303  
Telephone: (636) 916-0444  
Fax: (636) 916-3444  
CERTIFICATE OF AUTHORITY: ENGINEERING: E-120-D, LAND SURVEYING: LS-284-D  
DATE: JUNE 2011  
DRAWN: J.R.S.  
CHECKED: PROJECT NO.: 11-1230  
SHEET NO.:

DISCLAIMER OF RESPONSIBILITY  
I hereby specify that the documents intended to be authorized by my seal are limited to this sheet, and I hereby disclaim any responsibility for all other Drawings, Specifications, Estimates, Reports or other documents or instruments relating to or intended to be used for any part or parts of the architectural or engineering project or survey.

STATE OF MISSOURI  
JEFFREY R. SMITH  
PROFESSIONAL ENGINEER  
11.5.12

JEFFREY R. SMITH, P.E.  
MO. P.E. # 2001004672

PREPARED FOR:  
S.A.K. CONSTRUCTION, LLC  
MR. CARY SHAW  
864 HOFF ROAD  
O'FALLON, MISSOURI 63366  
TELEPHONE: 636-379-2350  
FAX: 636-379-2461  
E-mail: cashaw@sakcon.com

P & Z No.  
12-10.01 & 12-10.02  
City No.

Page No.  
7