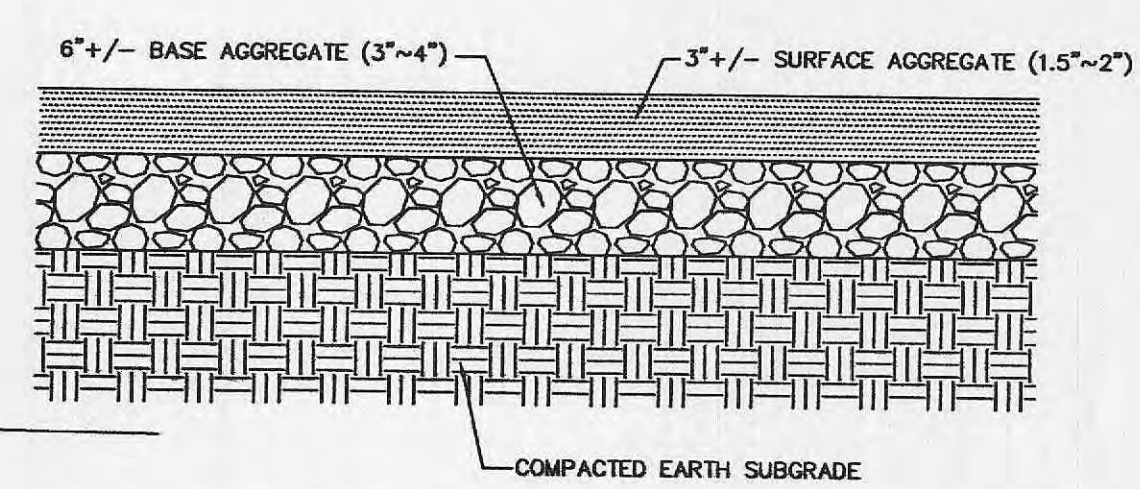
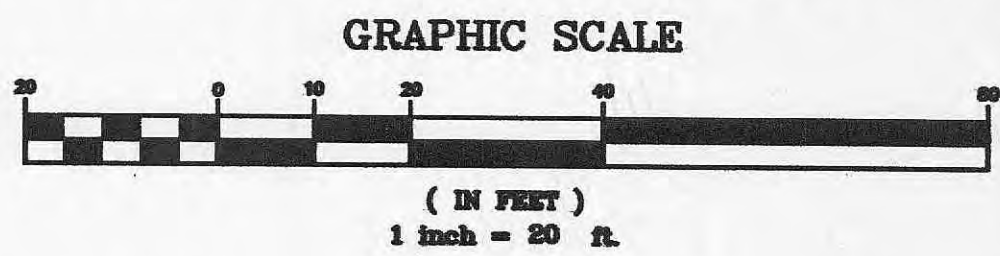


ENTRANCE PAVEMENT DETAIL



PROPOSED STORAGE YARD PAVEMENT DETAIL

PR. CONCRETE ENTRANCE IMPROVEMENT AT THE EXISTING ENTRANCE. 7" P.C. CONCRETE OVER 4" ROCK BASE, COMPACTED NO CURBS. SAWCUT EXISTING PAVEMENT FOR A SMOOTH UNIFORM TRANSITION. EXISTING TREES & BRUSH ALONG HOFF ROAD TO BE REMOVED



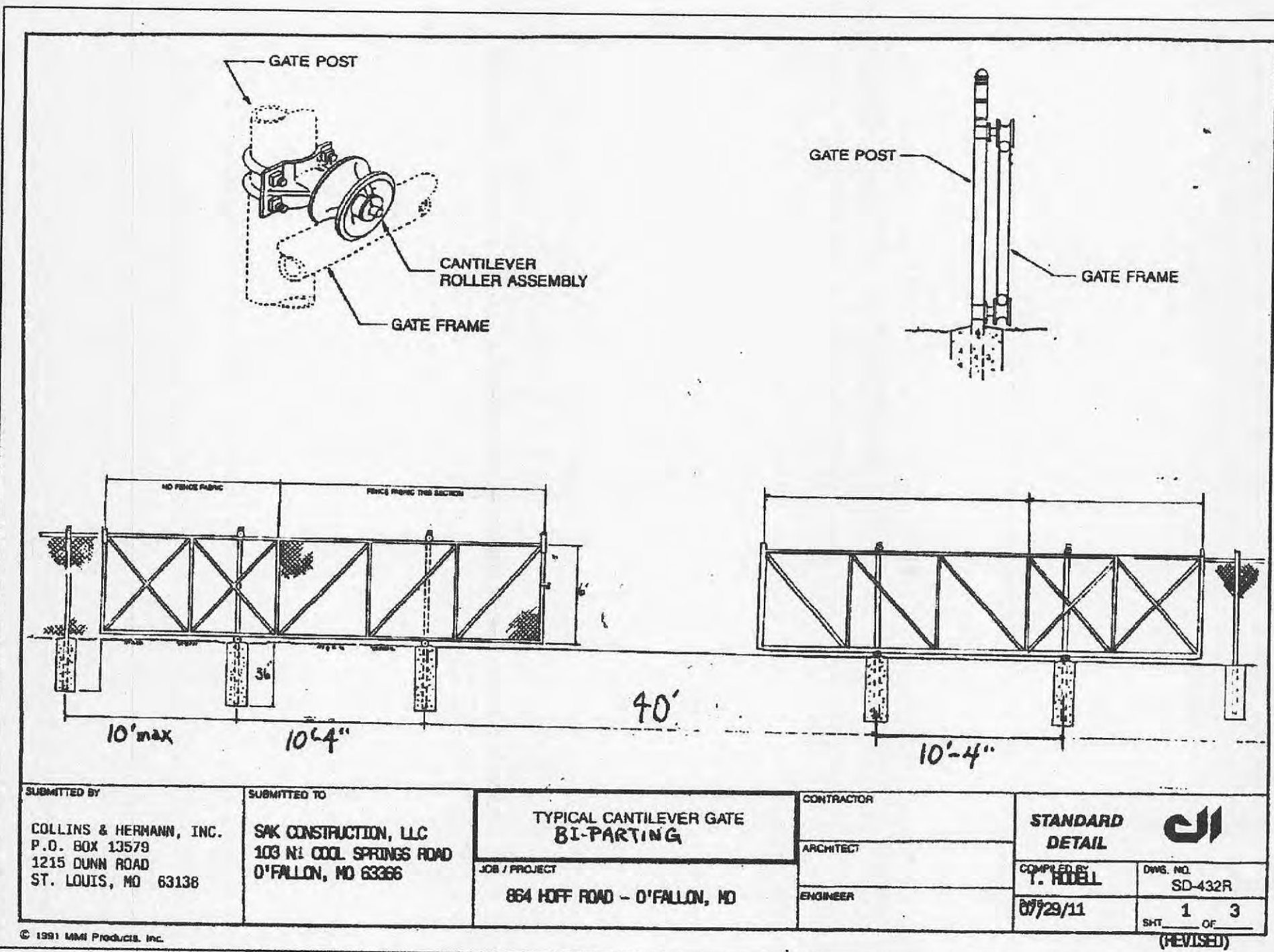
NOTE: SEE SHEETS 2 AND 3 FOR PERTINENT NOTES AND SPECIFICATIONS.

ENTRANCE DETAIL

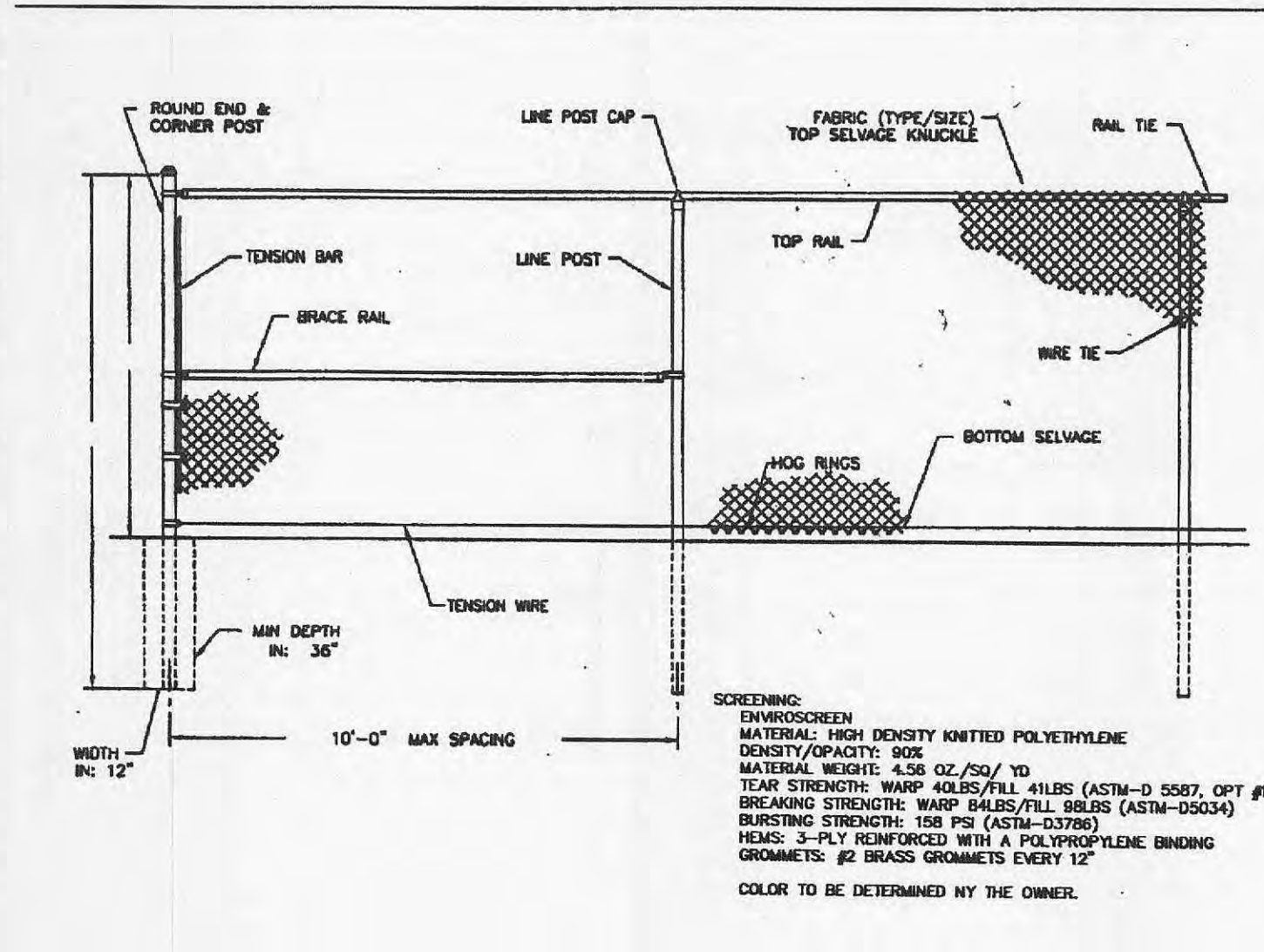
CITY OF O'FALLON  
COMMUNITY DEVELOPMENT DEPARTMENT  
ACCEPTED FOR CONSTRUCTION  
BY: [Signature] DATE: 11/02/11  
PROFESSIONAL ENGINEER'S SEAL  
INDICATES RESPONSIBILITY FOR DESIGN



Underground facilities, structures and utilities have been plotted from available surveys, records and information, and therefore, do not necessarily reflect the actual existence, non-existence, size, type, number of, or location of these facilities, structures, and utilities. The Contractor shall be responsible for verifying the actual location of all underground facilities, structures, and utilities, either shown or not shown on these plans. The underground facilities, structures, and utilities shall be located in the field prior to any grading, excavation or construction of improvements. These provisions shall in no way absolve any party from complying with the Underground Facility Safety and Damage Prevention Act, Chapter 319, RSMO.

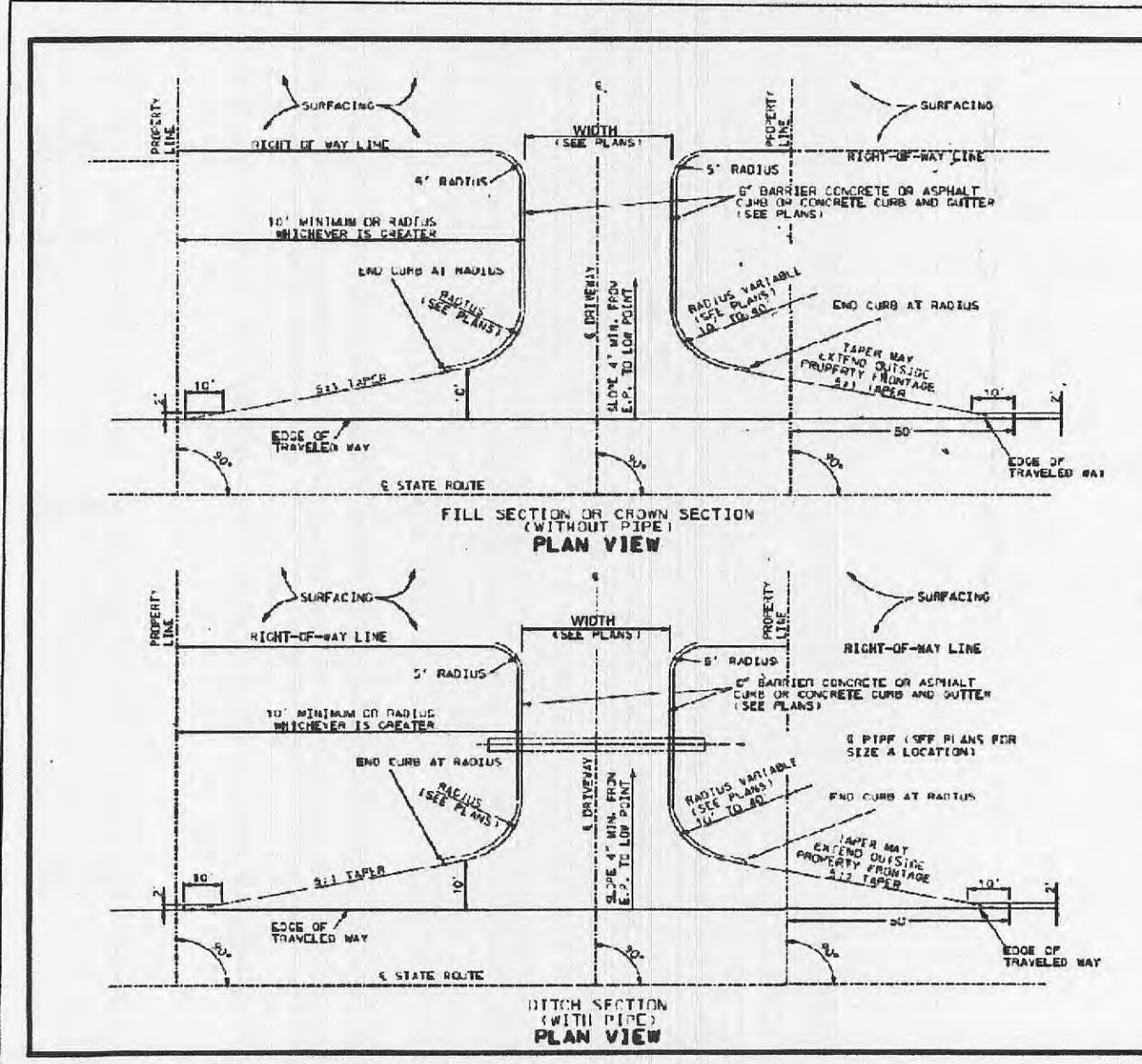


SUBMITTED BY: COLLINS & HERMANN, INC. P.O. BOX 13579 1215 DUNN ROAD ST. LOUIS, MO 63138	SUBMITTED TO: SK CONSTRUCTION, LLC 103 N. COOL SPRINGS ROAD O'FALLON, MO 63366	TYPICAL CANTILEVER GATE BI-PARTING	CONTRACTOR: COLLINS & HERMANN, INC.	STANDARD DETAIL
JOB/PROJECT: 864 HOFF ROAD - O'FALLON, MO		ARCHITECT:	ENGINEER:	DATE: 07/29/11
JOB/PROJECT: 864 HOFF ROAD - O'FALLON, MO		ARCHITECT:	ENGINEER:	DATE: 07/29/11



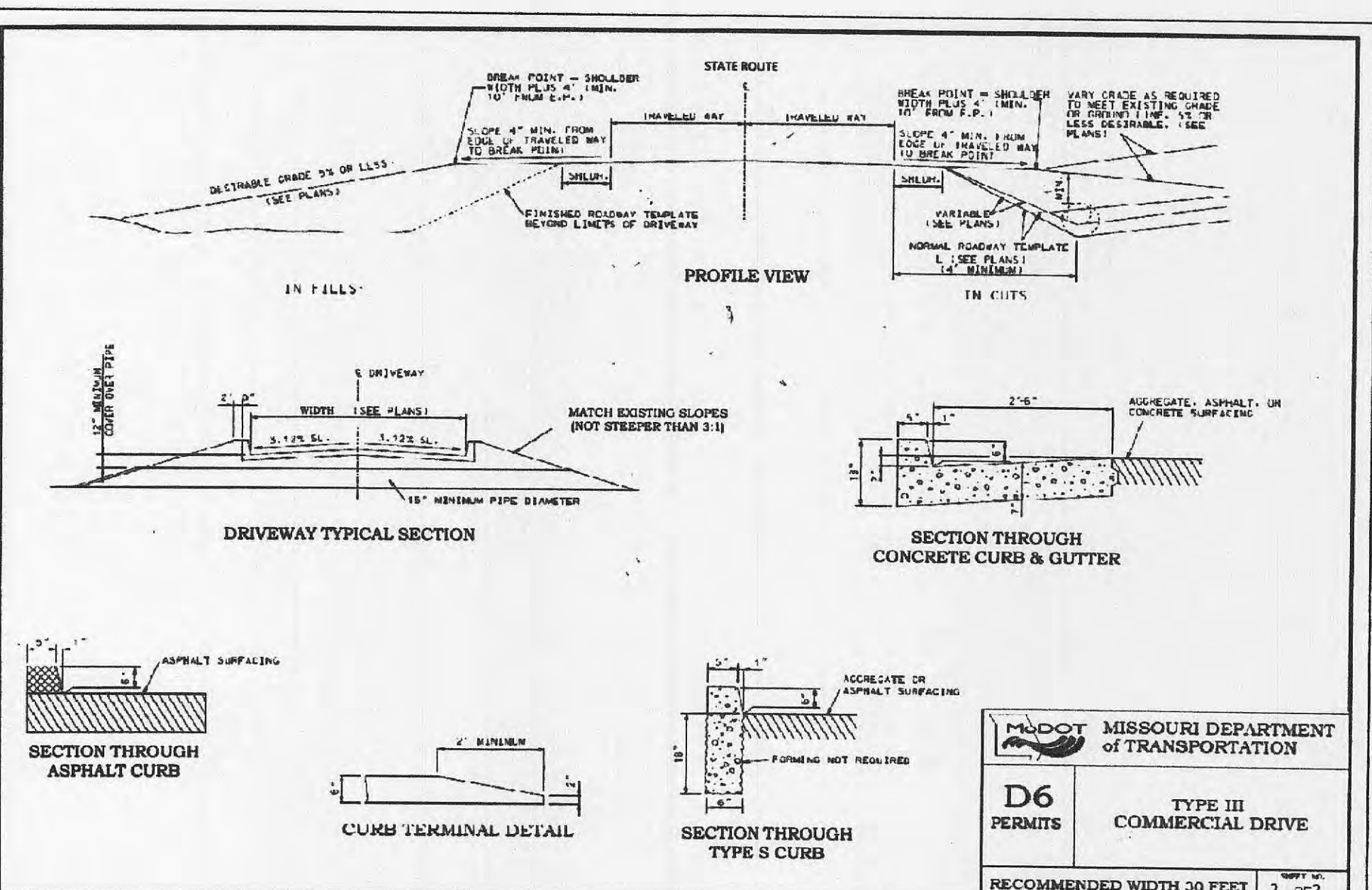
JOB SPECIFICATION			
FABRIC	MESH	GUAGE	SERVICE
Galv	2"	9ga	K/T
TENSION WIRE	4	3 STR.	6 STR.
BARBED WIRE	N/A	□	□
FRAMING	C.S.	3640	□
TOP RAIL	1.66		
BRACE RAIL	2.375		
BRACE RAIL	1.66		
CORNER POSTS	2.875		
END POSTS	2.875		
GATE POSTS	4"		
GATE FRAME	2.375		
GATE TYPE	Cantilever		

SUBMITTED BY: COLLINS & HERMANN, INC. 1215 DUNN ROAD ST. LOUIS, MO 63138	SUBMITTED TO: SK CONSTRUCTION, LLC 103 N. COOL SPRINGS ROAD O'FALLON, MO 63366	6' FENCE ELEVATION	CONTRACTOR: COLLINS & HERMANN, INC.
JOB/PROJECT: 864 HOFF ROAD - O'FALLON, MO		ARCHITECT:	ENGINEER:
JOB/PROJECT: 864 HOFF ROAD - O'FALLON, MO		ARCHITECT:	ENGINEER:

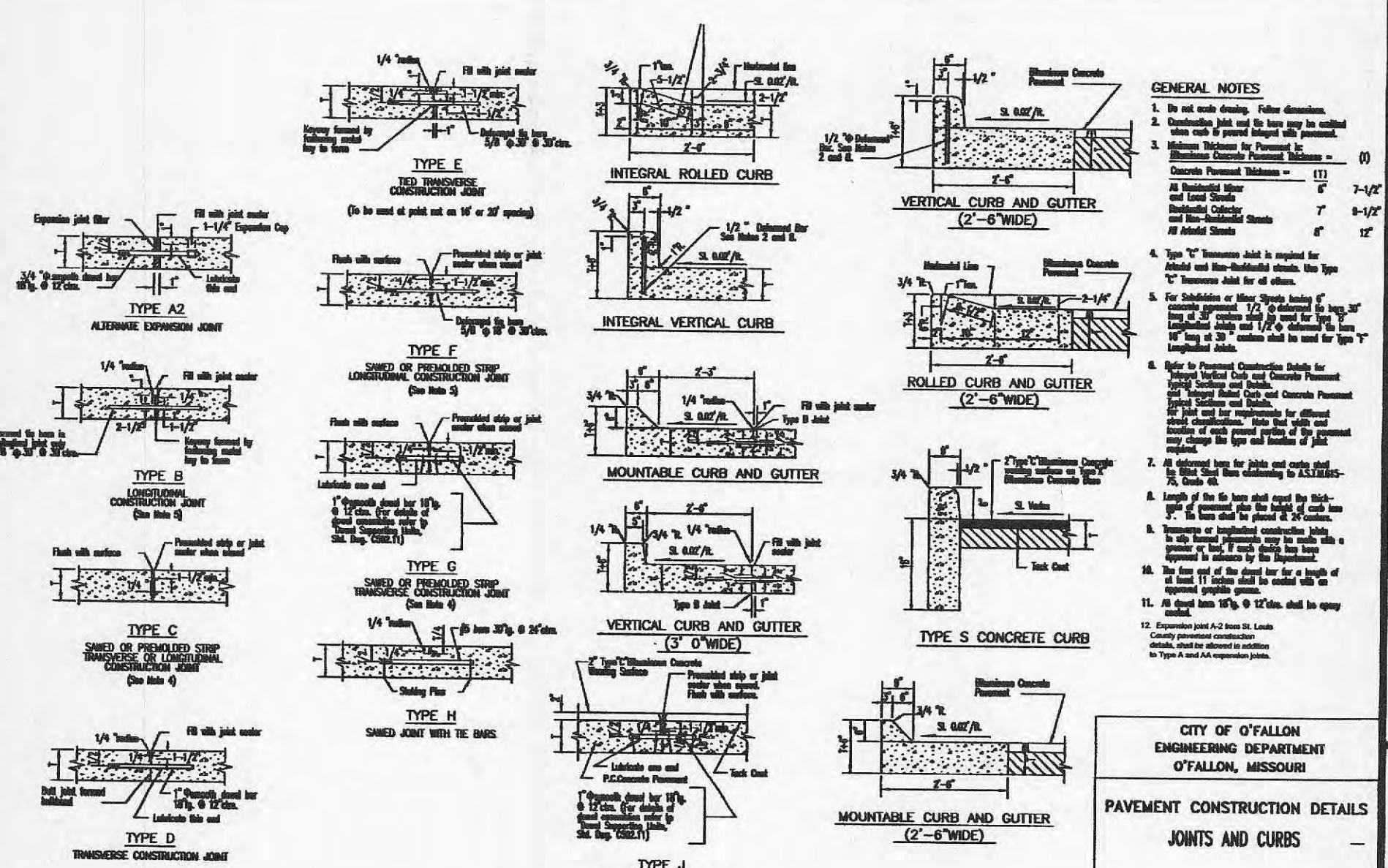


GENERAL NOTES:  
No part of the driveway including tapers shall be constructed outside of the property frontage.  
Pave size & location to be determined by geometry & drainage conditions (see plans).  
Surfacing shall be shown on the plans and/or permit.  
Length of pipe shall be determined by depth and location of drain, (see plans).  
If a paved approach is required, refer to standard plan 688.00 for construction details and construct curb to meet curb on paved approach.  
Curb or curb and gutter between right-of-way line & pipe may meet local agency conditions.  
This drawing illustrates driveway details for minimum situations. Traffic volume generated, safety considerations, drainage considerations, local requirements, etc. may dictate more extensive improvements than those illustrated on this drawing.

MISSOURI DEPARTMENT OF TRANSPORTATION  
D6 PERMITS TYPE III COMMERCIAL DRIVE  
RECOMMENDED WIDTH 30 FEET



MISSOURI DEPARTMENT OF TRANSPORTATION  
D6 PERMITS TYPE III COMMERCIAL DRIVE  
RECOMMENDED WIDTH 30 FEET



CITY OF O'FALLON  
ENGINEERING DEPARTMENT  
O'FALLON, MISSOURI  
PAVEMENT CONSTRUCTION DETAILS  
JOINTS AND CURBS

PROJECT TITLE:  
S.A.K. CONST.  
DETAILS

MUSLER ENGINEERING COMPANY  
CIVIL ENGINEERING - PLANNING - LAND SURVEYING  
32 Portwest Court, St. Charles, Missouri 63303  
Telephone: (636) 916-0444  
Fax: (636) 916-3444

DATE: 10/27/11  
REVISIONS: 3  
CITY COMMENTS: 1  
REVISION: 1  
NO.:

DISCLAIMER OF RESPONSIBILITY  
I hereby specify that the documents intended to be authorized by my seal are limited to this sheet, and I hereby disclaim any responsibility for all other drawings, Specifications, Estimates, Reports or other documents or instruments relating to or intended to be used for any part or parts of the architectural or engineering project or survey.

JEFFREY R. SMITH, P.E.  
NO. P.E. # 2001004672

PREPARED FOR:  
S.A.K. CONSTRUCTION, LLC  
MR. CARY SHAW  
864 HOFF ROAD  
O'FALLON, MISSOURI 63366  
TELEPHONE: 636-379-2350  
FAX: 636-379-2461  
E-mail: cshaw@sakcon.com

P & Z No. 12-10.01 & 12-10.02  
City No.

Page No. 9  
RECEIVED  
OCT 18 2011  
BY: [Signature]