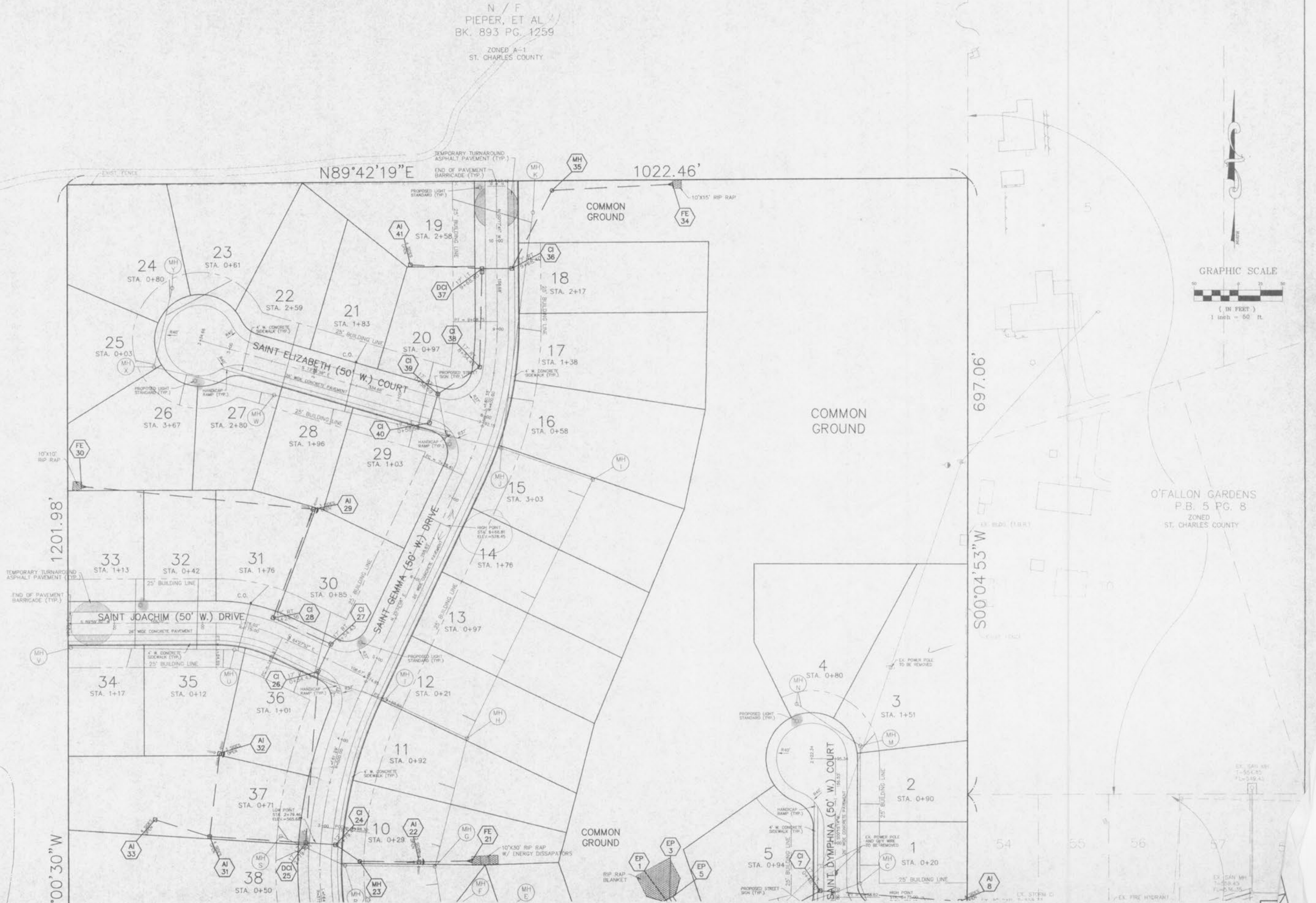
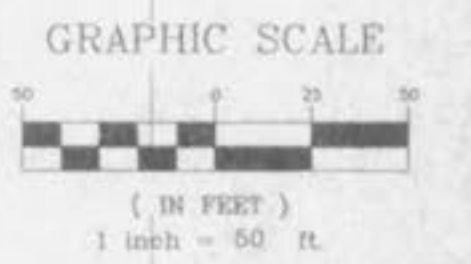
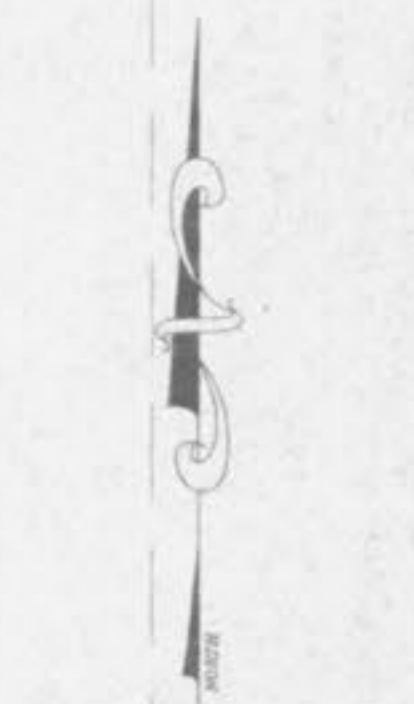


N / F  
 PIEPER, ET AL  
 BK. 893 PG. 1259  
 ZONED A-1  
 ST. CHARLES COUNTY



N / F  
 PIEPER, ET AL  
 BK. 893 PG. 1259  
 ZONED A-1  
 ST. CHARLES COUNTY

Underground utilities have been plotted from available information and therefore their locations shall be considered approximate only. The verification of the location of all underground utilities, either shown or not shown on these plans shall be the responsibility of the contractor, and shall be located prior to any grading or construction of the improvements.

3  
 22

C:\GSA\p04083200.dwg Thu Apr 21 16:19:16 1998 STATION: 32 44