

LEGEND

O.D. - NOMINAL PIPE SIZE
 H - COVER ABOVE TOP OF PIPE
 A - EMBEDDED BELOW PIPE (SEE TABLE)

--- TAMPED BACK FILL
 --- COMPACTED BACK FILL
 --- GRANULAR BEDDING

TABLE OF EMBEDDED DEPTHS BELOW PIPE

O.D.	A	A
	MIN. SOIL	MIN. ROCK
27" & SMALLER	3"	6"

GRANULAR BEDDING SHALL BE CRUSHED ROCK OR PEA GRAVEL WITH NOT LESS THAN 85% PASSING 1/2" (85% PASSING 3/4" FOR 30" AND LARGER PIPE) AND NOT LESS THAN 90% RETAINED ON A #4, TO BE PLACED IN NOT MORE THAN 6" LAYERS AND COMPACTED BY SLICING WITH A DROVEL OR VIBRATING.

COMPACTED BACK FILL SHALL BE FINELY DIVIDED JOB EXCAVATED MATERIAL FREE FROM DEBRIS, ORGANIC MATERIAL AND STONES, PLACED IN UNIFORM LAYERS NOT MORE THAN 6" THICK, COMPACTED TO 95% MAXIMUM DENSITY AS DETERMINED BY A S.T.M. DESIG. OR GRADED AGGREGATE. GRANULAR BACK FILL MATERIAL MAY BE SUBSTITUTED FOR ALL OR PART OF COMPACTED BACK FILL.

TAMPED BACK FILL SHALL BE FINELY DIVIDED JOB EXCAVATED MATERIAL FREE FROM DEBRIS, ORGANIC MATERIAL AND STONES, HAND PLACED IN UNIFORM LAYERS NOT MORE THAN 6" THICK AND TAMPED AROUND CONDUIT PIPE. GRANULAR BACK FILL MATERIAL MAY BE SUBSTITUTED FOR ALL OR PART OF TAMPED BACK FILL.

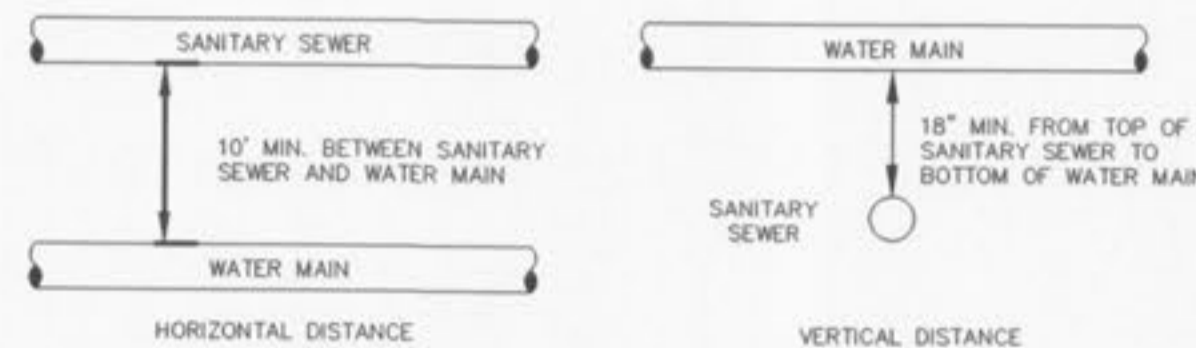
TRENCH BACK FILL SHALL BE AS REQUIRED IN THE "LAYING AND BACK FILL" SECTION OF THE DETAILED SPECIFICATIONS.

EMBEDDED TYPE OF EMBEDDED TO BE USED SHALL BE AS SPECIFIED IN THE PLANS AND SPECIFICATIONS.

TRACER WIRE REQUIRED ON ALL WATER MAINS

WATER MAIN EMBEDDED
NOT TO SCALE

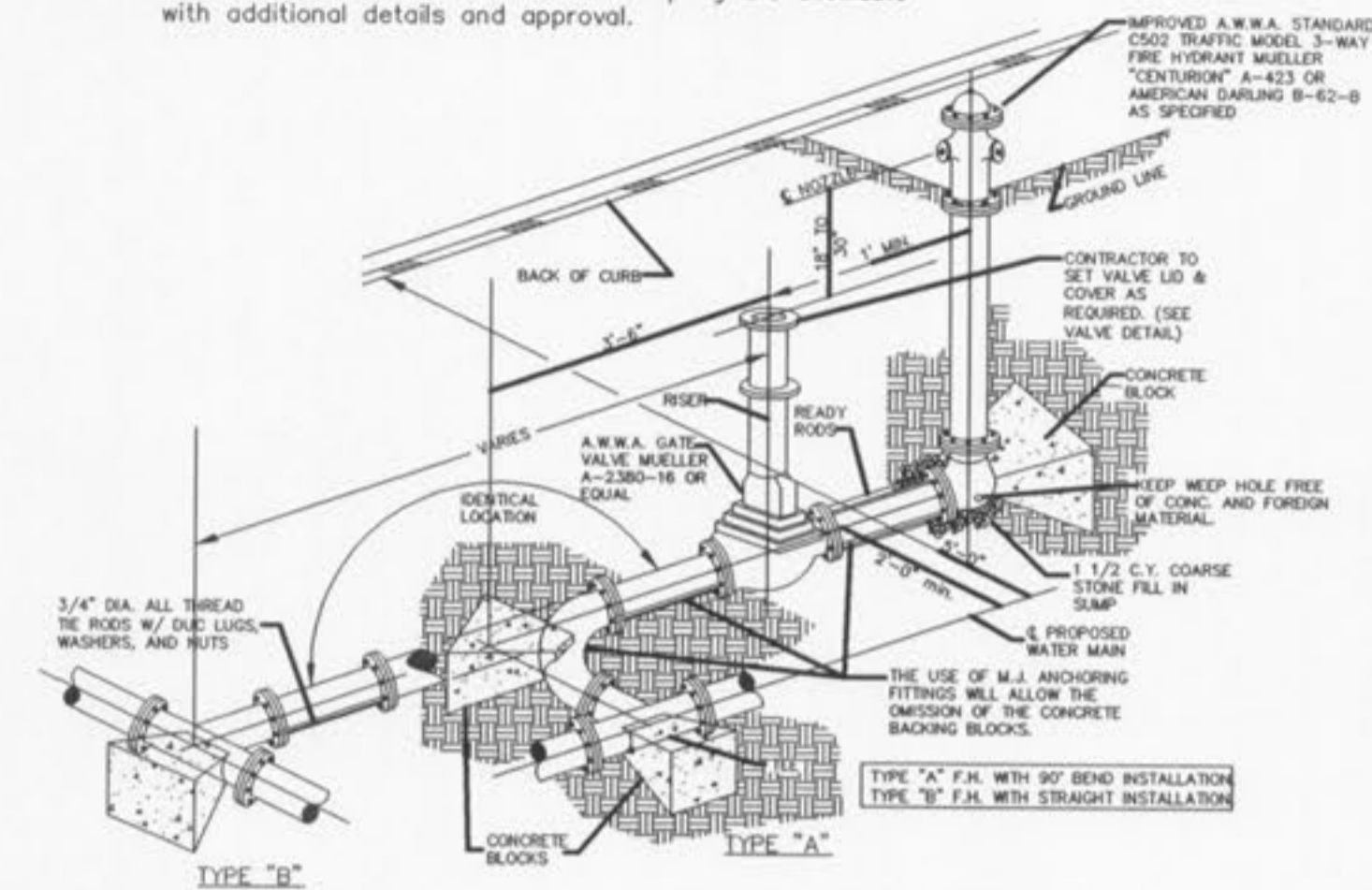
CITY OF O'FALLON
 ENGINEERING DEPARTMENT
 O'FALLON, MISSOURI
WATER MAIN EMBEDDED



TYPICAL WATER AND SEWER SEPARATION
NOT TO SCALE

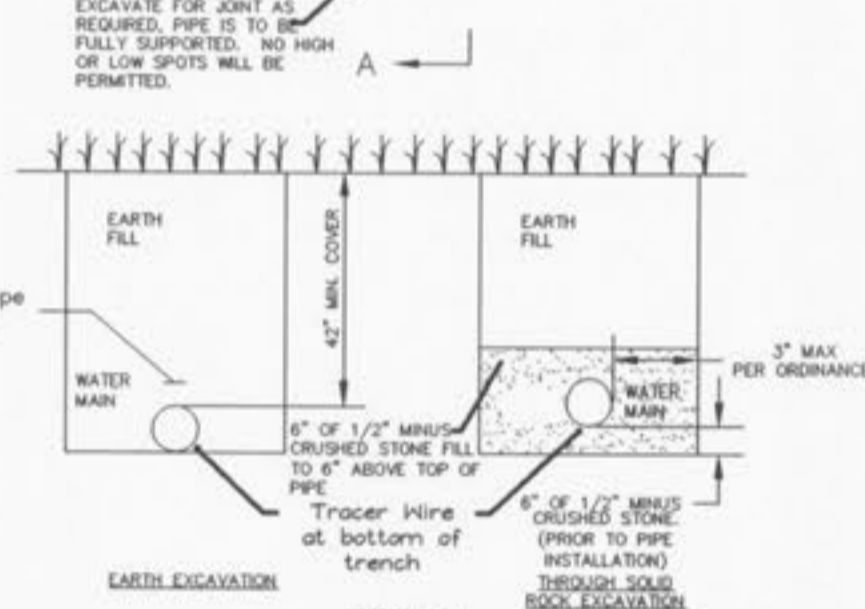
CITY OF O'FALLON
 ENGINEERING DEPARTMENT
 O'FALLON, MISSOURI
WATER AND SEWER SEPARATION DETAIL

Note: Other connections such as anchor coupling are allowable with additional details and approval.



FIRE HYDRANT DETAIL
NOT TO SCALE

CITY OF O'FALLON
 ENGINEERING DEPARTMENT
 O'FALLON, MISSOURI
FIRE HYDRANT DETAILS

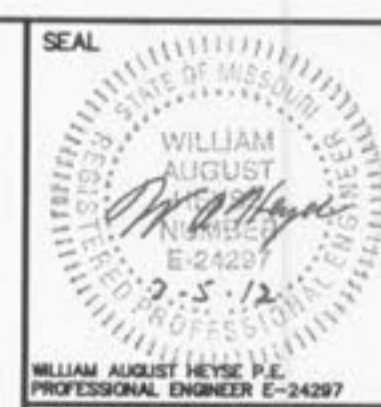


TYPICAL WATER MAIN INSTALLATION DETAILS
NOT TO SCALE

CITY OF O'FALLON
 ENGINEERING DEPARTMENT
 O'FALLON, MISSOURI
WATER MAIN INSTALLATION DETAIL

Ductile Iron Pipe installation shall follow the Ductile Iron Research Association (DIPRA) guide line.
 The Installation of PVC Pipe shall follow the Uni-Bell PVC Pipe Association Handbook of PVC Design and Construction.

COPYRIGHT 2011 - CONFIDENTIAL PROPRIETARY MATERIAL. THE USE, REPRODUCTION AND SALES RIGHTS OF THIS DRAWING ARE RESERVED BY LAND DEVELOPMENT CONSULTANTS, INC. (LDC, INC.).



PREPARED FOR:
MEL SCHNEIDER
 305 CAPRI DR.
 O'FALLON, MO. 63366
 PH: 314-249-9550

LAND PLANNING • LAND SURVEYING
LDC
 CIVIL ENGINEERING
 1112 ROCK CREEK ELEMENTARY RD.
 O'FALLON, MISSOURI 63366
 PH: (636) 240-4949
 MO. CERT. OF AUTHORITY FOR LAND SURVEYING LIC. NO. 000367
 MO. CERT. OF AUTHORITY FOR ENGINEERING LIC. NO. 001596
 SERIAL NO. E-1596-D

SCHNEIDER DUPLEX
 ST. JOSEPH ST.
 O'FALLON, MO.

PROJECT	REVISION	DRAWN BY	CHECKED BY	DATE	JOB. NO.	SCALE	P&Z NO.	CITY. NO.	SHEET
		GMK	JPT	1/20/2012	11.700	NO SCALE	24-11		08