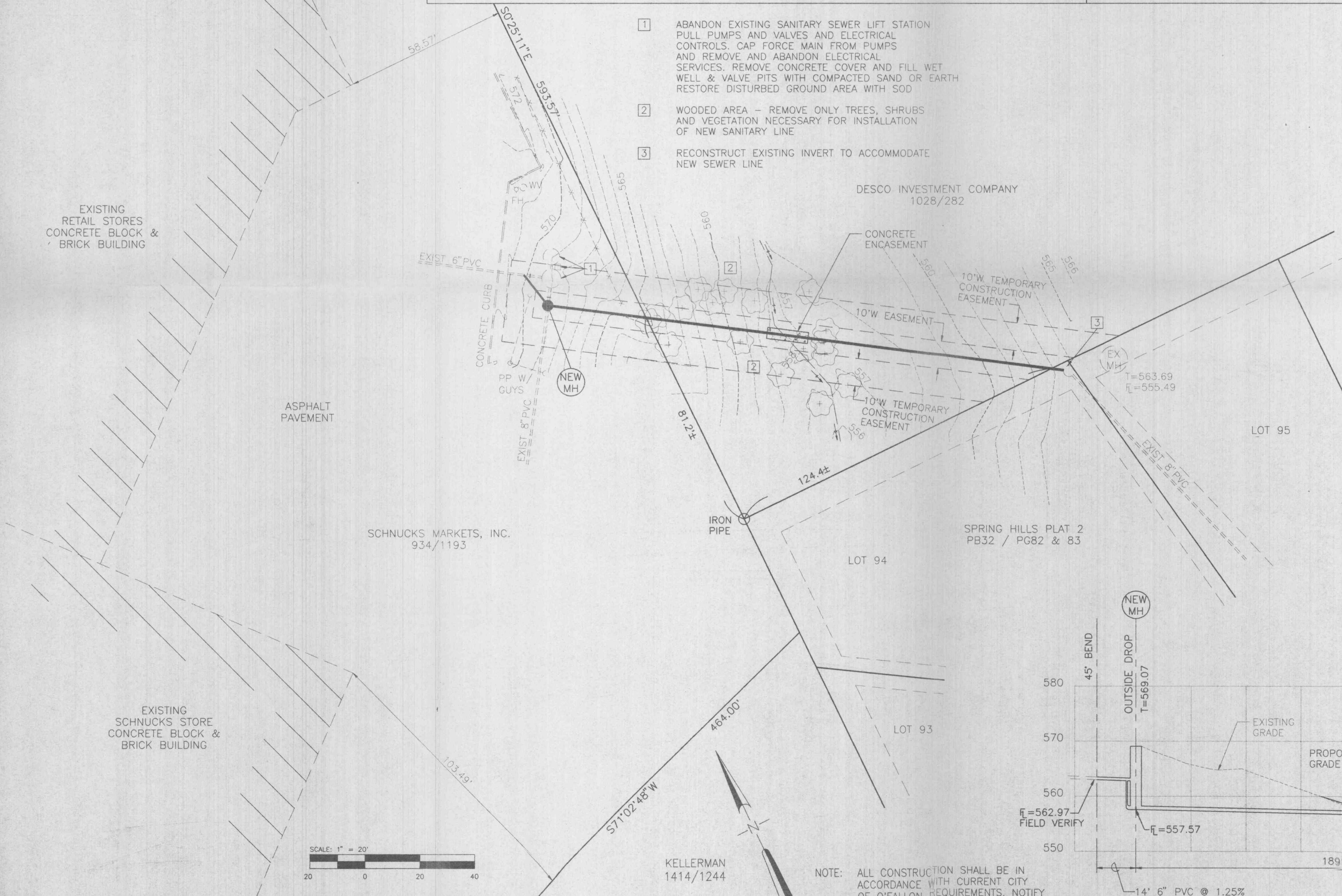
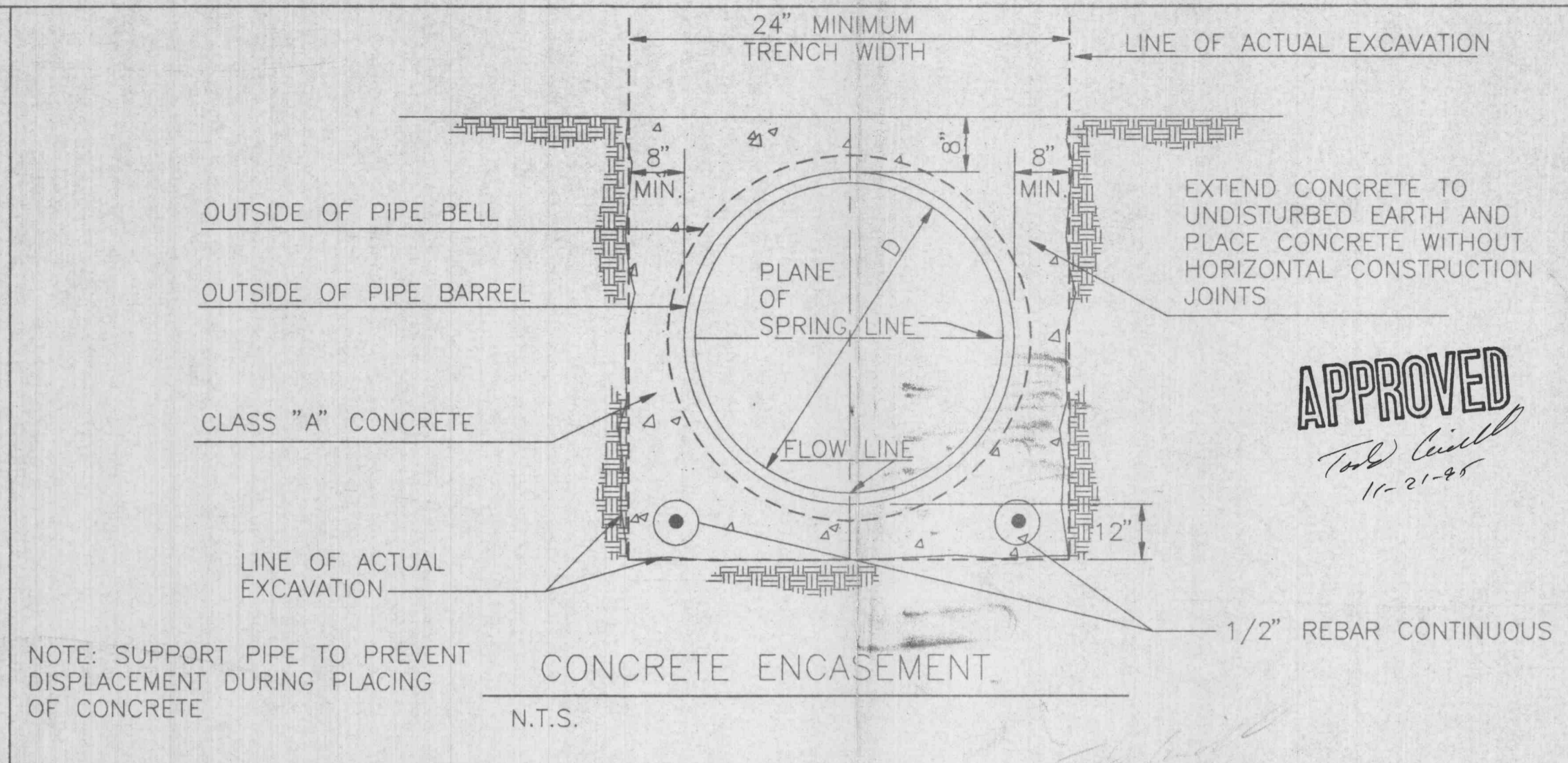
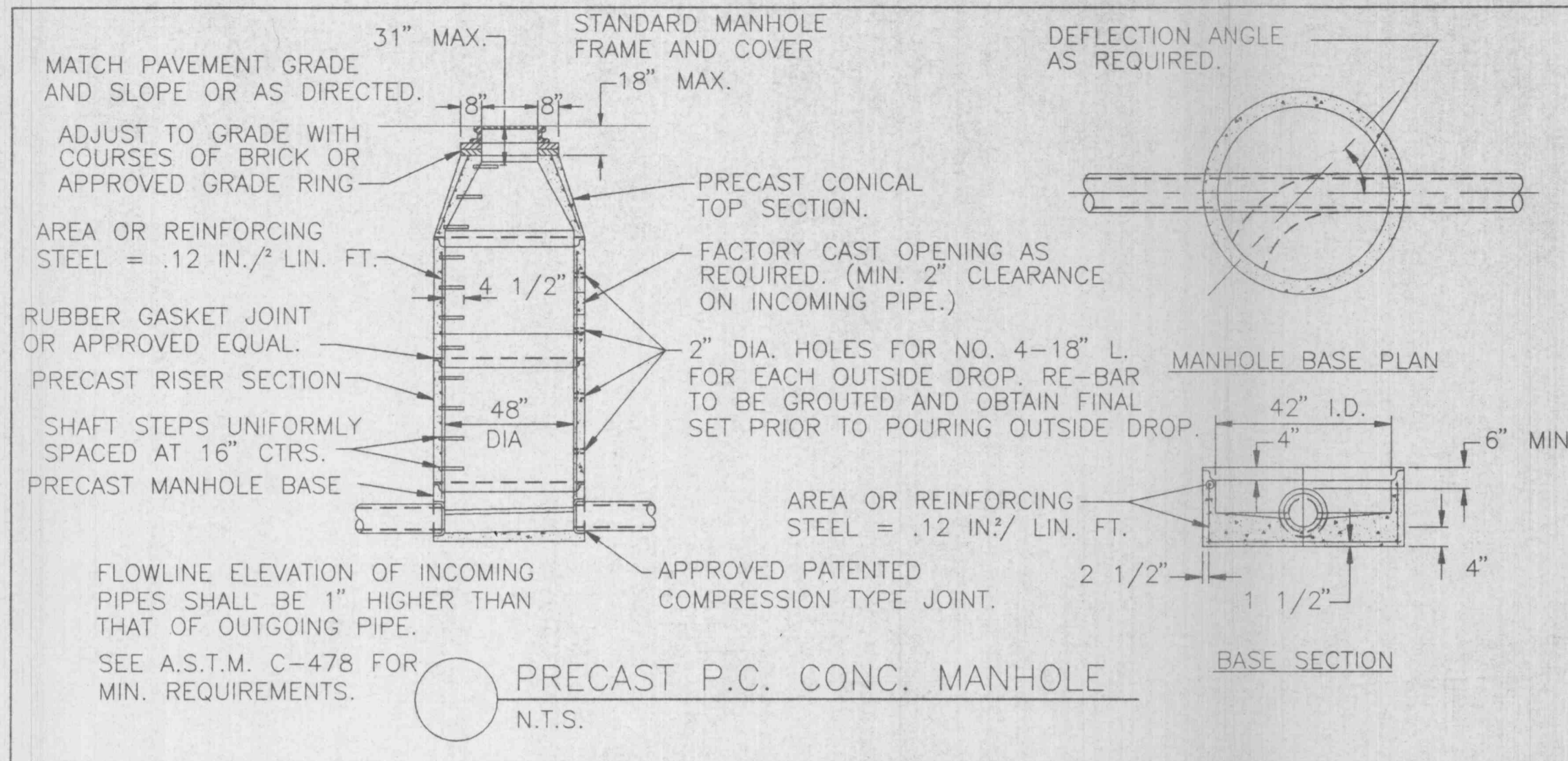
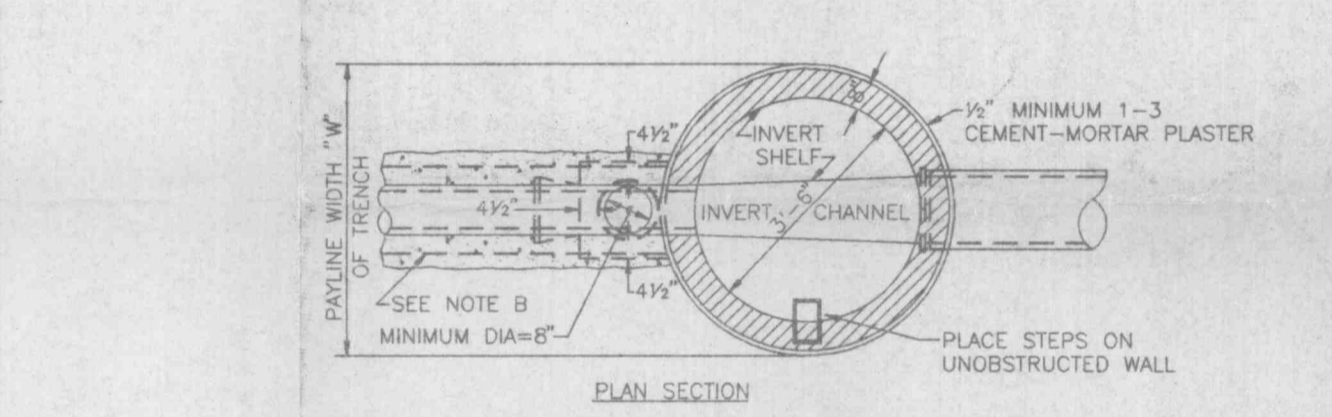
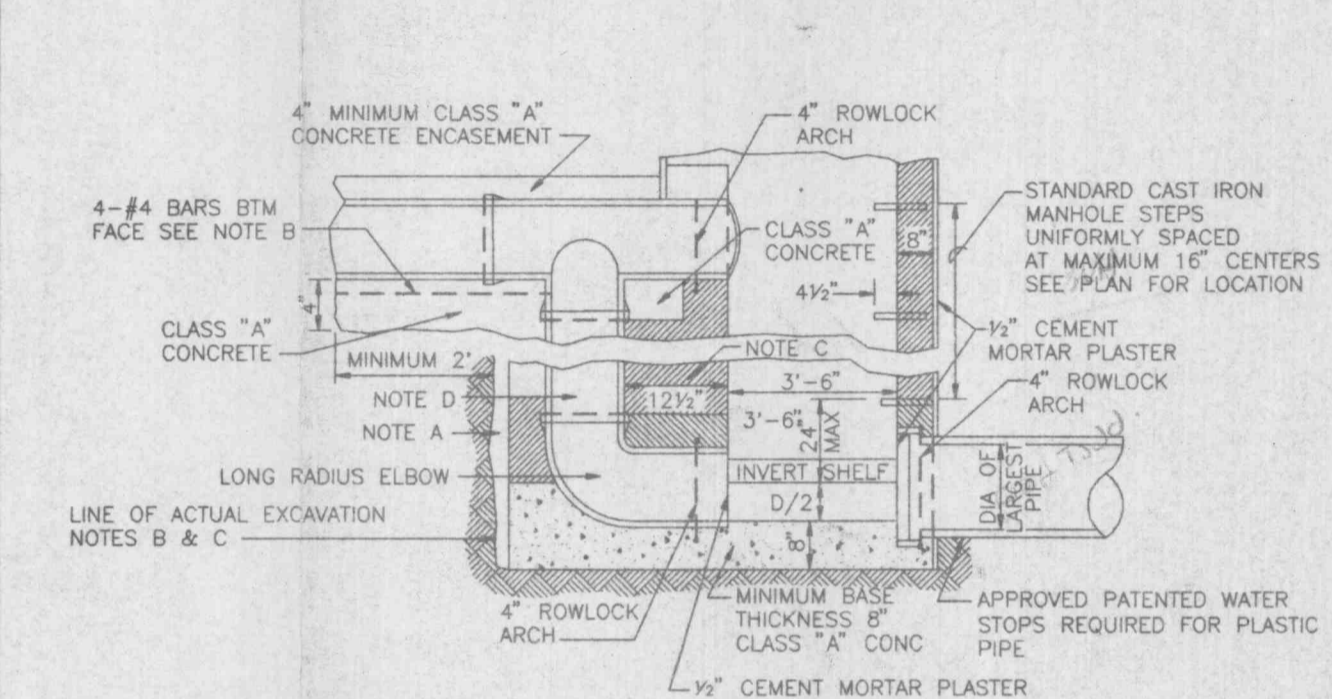


LOCATION MAP
NTS



- 1 ABANDON EXISTING SANITARY SEWER LIFT STATION PULL PUMPS AND VALVES AND ELECTRICAL CONTROLS. CAP FORCE MAIN FROM PUMPS AND REMOVE AND ABANDON ELECTRICAL SERVICES. REMOVE CONCRETE COVER AND FILL WET WELL & VALVE PITS WITH COMPACTED SAND OR EARTH RESTORE DISTURBED GROUND AREA WITH SOD
- 2 WOODED AREA - REMOVE ONLY TREES, SHRUBS AND VEGETATION NECESSARY FOR INSTALLATION OF NEW SANITARY LINE
- 3 RECONSTRUCT EXISTING INVERT TO ACCOMMODATE NEW SEWER LINE



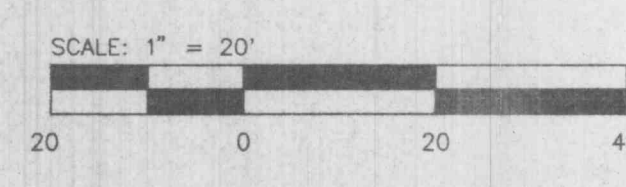
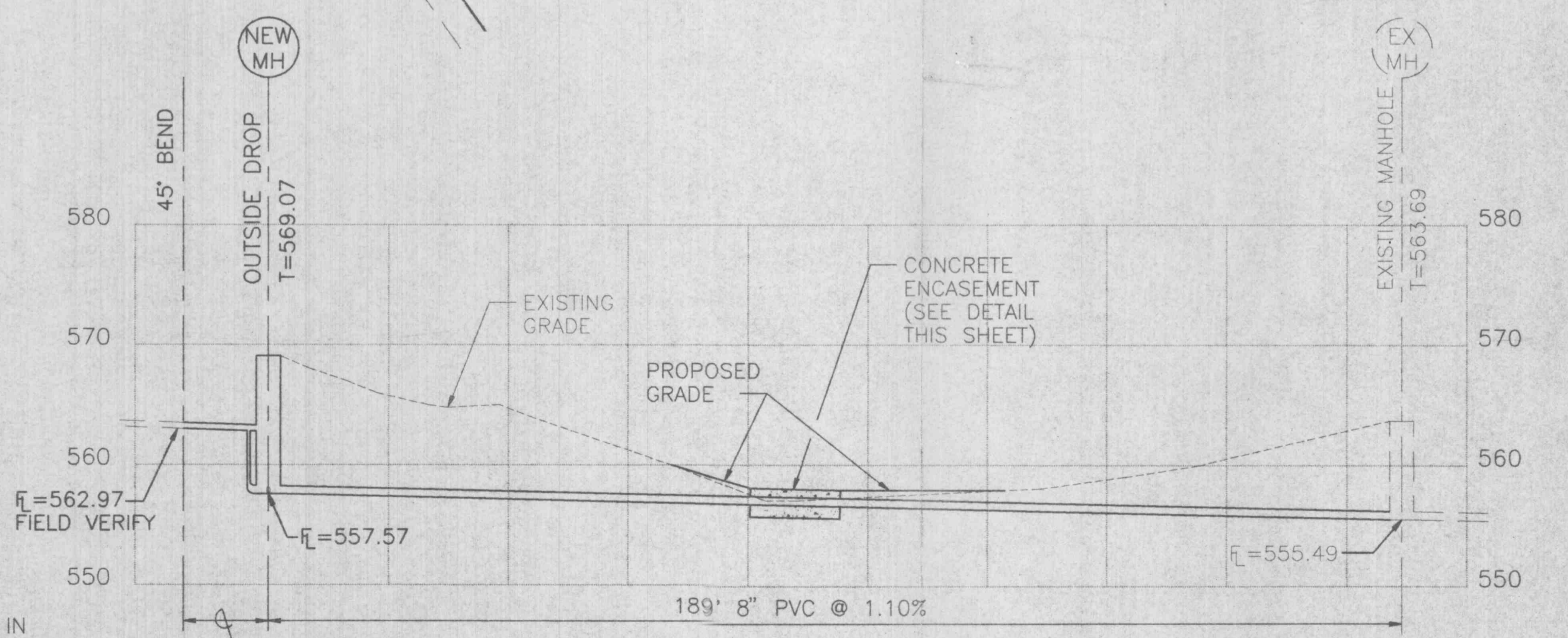
NOTE A IF LINE OF ACTUAL EXCAVATION EXTENDS BEYOND LINE OF DROP MASONRY, FILL EXCESS EXCAVATED SPACE WITH CONSTRUCTION MATERIAL OF DROP OR PACK WITH COMPACTED CRUSHED LIMESTONE TO BASE OF CLASS "A" CONCRETE ENCASUREMENT.

NOTE B IF EXCAVATED SPACE OUTSIDE OF DROP PIPE MASONRY EXCEEDS 1 FOOT, REINFORCE SEWER PIPE ENCASUREMENT WITH A MINIMUM OF 4 NO. 4 BARS FOR LENGTH OF ENCASUREMENT.

NOTE C MASONRY ENCASUREMENT OF DROP-PIPE SHALL BE Banded AND PLACED INTEGRALLY WITH MANHOLE MASONRY.

NOTE D DIAMETER OF DROP PIPE FOR COMBINED SEWERS AND SANITARY SEWERS, IS SAME AS INCOMING 10" OR 12" PIPE SEWER, AND 12" FOR LARGER COMBINED SEWERS UNLESS OTHERWISE SHOWN ON PROJECT PLANS. FOR SANITARY SEWERS 15" OR LARGER, A DROP IS NOT TO BE USED; CONNECT TO MANHOLE AT, OR WITHIN 3' ABOVE ITS FLOWLINE.

NOTE E NEW OUTSIDE DROP ON EXISTING MANHOLE REQUIRES NO 4 REBARS SPACED VERTICALLY AT 24" C-C, ONE ON EACH SIDE OF THE DROP PIPE, GROUDED THROUGH 2" DIA HOLES IN MANHOLE WALL. (MINIMUM LENGTH OF BARS 18")



KELLERMAN
1414/1244

NOTE: ALL CONSTRUCTION SHALL BE IN ACCORDANCE WITH CURRENT CITY OF O'FALLON REQUIREMENTS. NOTIFY THE CITY OF O'FALLON 48 HOURS PRIOR TO ANY CONSTRUCTION.

**SCHNUCKS O'FALLON
SANITARY SEWER EXTENSION
102 OLD HIGHWAY 40
O'FALLON, MO. 63366**

**Kuhlmann
Design
Group, Inc.**
66 Progress Parkway
St. Louis, Missouri 63043-3706
Tel: (314) 434-8898

K d G

DISCLAIMER OF RESPONSIBILITY
I hereby specify that the documents intended to be authorized by my seal are limited to this sheet, and I hereby disclaim any responsibility for all other drawings, specifications, estimates, reports or other documents or instruments relating to or intended to be used for any part or parts of the architectural or engineering project or survey.

NO.	DATE	CITY COMMENTS
1	11/1/95	

PROJECT NO. 950066	CONTRACT NO. 0001
DRAWN SLH	CHECKED JSP
DATE 08/07/95	

**SCHNUCKS O'FALLON
SANITARY SEWER EXTENSION**
SHEET 1 OF 1
C1