

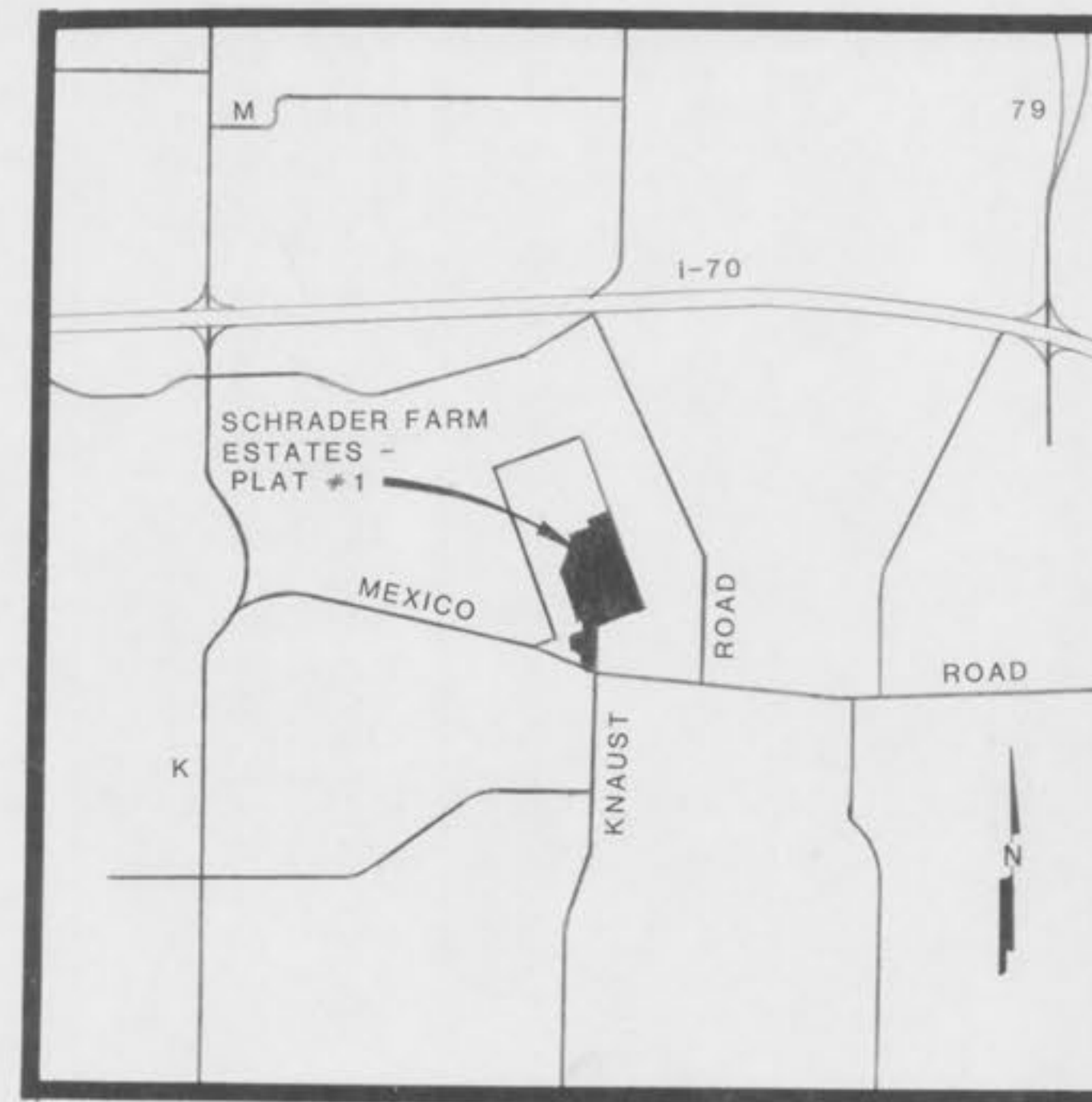
SCHRADER FARM ESTATES

PLAT #1

PART OF THE FRACTIONAL WEST 1/2 OF THE NORTHWEST 1/4 OF SECTION 34, AND PART OF U.S. SURVEY 1766, T. 47 N., R. 3 E. ST. CHARLES COUNTY, MISSOURI

LEGEND

| SYMBOL | | DESCRIPTION |
|----------|----------|--------------------|
| PROPOSED | EXISTING | |
| | | CONTOUR LINE |
| | | SILTATION CONTROL |
| | | STORM SEWER |
| | | AERA INLET |
| | | CURB INLET |
| | | FLARED END SECTION |
| | | SANITARY SEWER |
| | | MANHOLE |



LOCATION MAP

NOT TO SCALE

INDEX OF DRAWINGS

| DRAWING TITLE | DRAWING NO. |
|----------------------------|-------------|
| COVER SHEET | 1 |
| SITE & GRADING PLANS | 2 & 3 |
| OFFSITE GRADING & DRAINAGE | 4 |
| STREET PROFILES | 5 & 6 |
| SANITARY SEWER PROFILES | 7 & 8 |
| STORM SEWER PROFILES | 9 & 10 |
| GENERAL NOTES | 11 |
| SEWER & STREET DETAILS | 12 |
| DRAINAGE AREA MAPS | 13 & 14 |
| RECORD PLATS | 15 & 16 |

PREPARED FOR:
PAPIN BUILDERS, INC.
11420 GRAVOIS RD.
ST. LOUIS, MO. 63126
PHONE: 842-1100

TOTAL AREA OF TRACT :
70.737 ACRES

BENCHMARK - ELEVATION 509.47 - "L" CHISELED ON SOUTH END OF WEST HEADWALL OF STATE HIGHWAY K BRIDGE OVER BELLEAU CREEK. RM 68 P.E.M.A. STUDY MARCH 1978.

TBM - 525.96 - "O" IN-OPEN, FIREPLUG NORTH SIDE MEXICO ROAD, CORNER OF COPPERFIELD SUBDIVISION

| | | | |
|-----------------------|-------------------|--|--------------------|
| SCHRADER FARM ESTATES | | | |
| COVER SHEET | | | |
| Fox & Cole | | Planning Civil Engineer Surveying | |
| CONSULTING ENGINEERS | | 5000 Cedar Suite 301 St. Louis, MO Telephone (314) 241-1100 | |
| Drawn By MWM | Checked By SMB | Project Number 83-132 | Sheet Number 10 |
| Date 12-23-83 | Revisions | | |