

ISSUE	DATE / REMARKS
1	3-3-2015 Initial Submittal
2	5-7-2015 City Comments
3	6-26-2015 City & PWSD #2 Comments
4	11-9-2015 City Comments
5	12-10-2015 City Comments

**SEDIMENT BASIN G**

DRAINAGE AREA ONSITE = 14.37 ACRES  
 DRAINAGE AREA OFFSITE = 6.38 ACRES  
 DRAINAGE AREA TOTAL = 20.75 ACRES  
 DISTURBED AREA = 14.37 ACRES

VOLUME REQUIRED: (20.75 AC)(3,600 CU.FT./AC) = 74,700 CU.FT.

VOLUME PROVIDED:

ELEV.	VOLUME (CU.FT.)
624.0	0
626.0	10,187
628.0	26,633
630.0	50,979
631.5	79,742
632.0	93,816
634.0	169,651
636.0	267,675
637.5	354,323

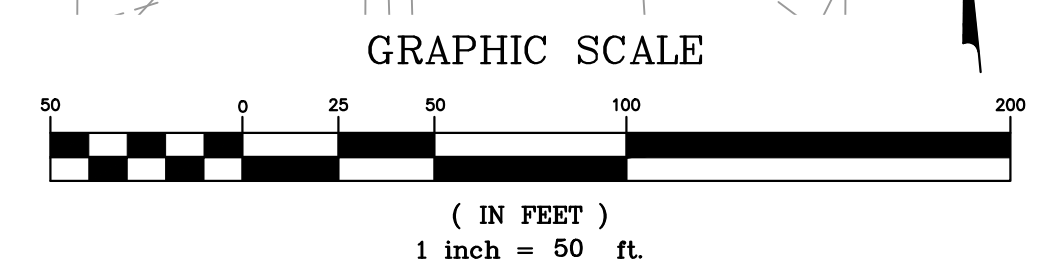
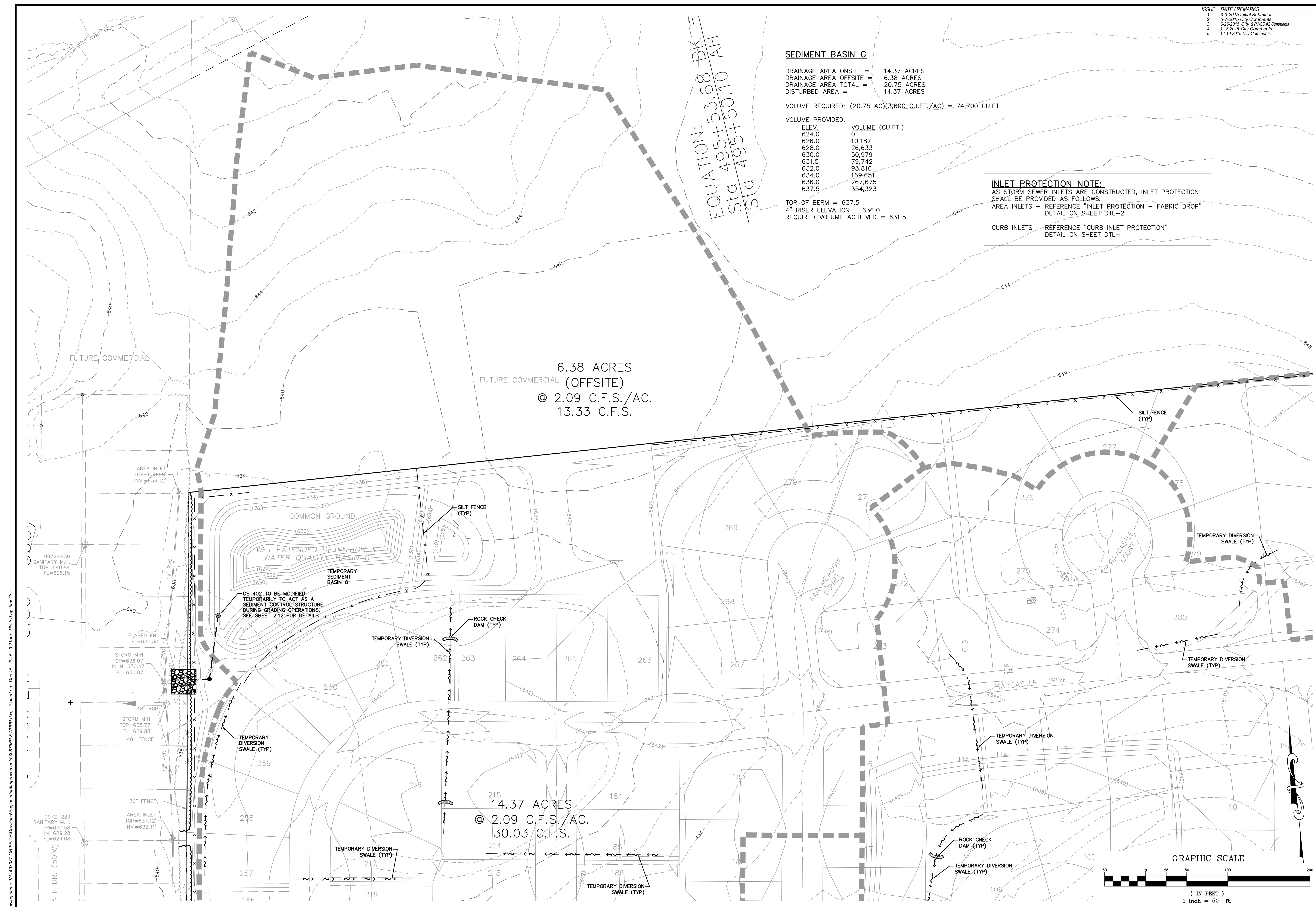
TOP OF BERM = 637.5  
 4" RISER ELEVATION = 636.0  
 REQUIRED VOLUME ACHIEVED = 631.5

**INLET PROTECTION NOTE:**  
 AS STORM SEWER INLETS ARE CONSTRUCTED, INLET PROTECTION SHALL BE PROVIDED AS FOLLOWS:  
 AREA INLETS - REFERENCE "INLET PROTECTION - FABRIC DROP" DETAIL ON SHEET DTL-2  
 CURB INLETS - REFERENCE "CURB INLET PROTECTION" DETAIL ON SHEET DTL-1

EQUATION:  $Y = 53.68 BK - AH$   
 Sta 495+53.68  
 Sta 495+50.10

6.38 ACRES (OFFSITE)  
 @ 2.09 C.F.S./AC.  
 13.33 C.F.S.

14.37 ACRES  
 @ 2.09 C.F.S./AC.  
 30.03 C.F.S.



PROJECT TITLE

The Villages at  
 Shady Creek

OFFALON, MISSOURI

THE **STERLING** CO.  
 ENGINEERS & SURVEYORS

5055 New Baumgartner Road  
 St. Louis, Missouri 63129  
 Ph 314-487-0440 Fax 314-487-8944  
 www.sterling-eng-sur.com  
 Corporate Certificate of Authority #001348



Date: 12/10/2015  
 RODNEY ARNOLD  
 LICENSE # PE-2002016612  
 Civil Engineer

Lombardo Homes of St. Louis, LLC

2299 Technology Drive, Suite 150  
 Ofallon, Missouri 63368  
 Ph: (636) 265-2710  
 Fax: (636) 695-3195  
 www.lombardohomesstlouis.com

SWPPP

P+Z No. P&Z NO  
 City No. 15-162-SP  
 Date: 12/10/2015  
 Job No. 14-03-087

Page No.

2.4

IMP