

SEDIMENT BASIN F

DRAINAGE AREA ONSITE = 24.45 ACRES
 DRAINAGE AREA OFFSITE = 0.59 ACRES
 DRAINAGE AREA TOTAL = 25.04 ACRES
 DISTURBED AREA = 24.45 ACRES

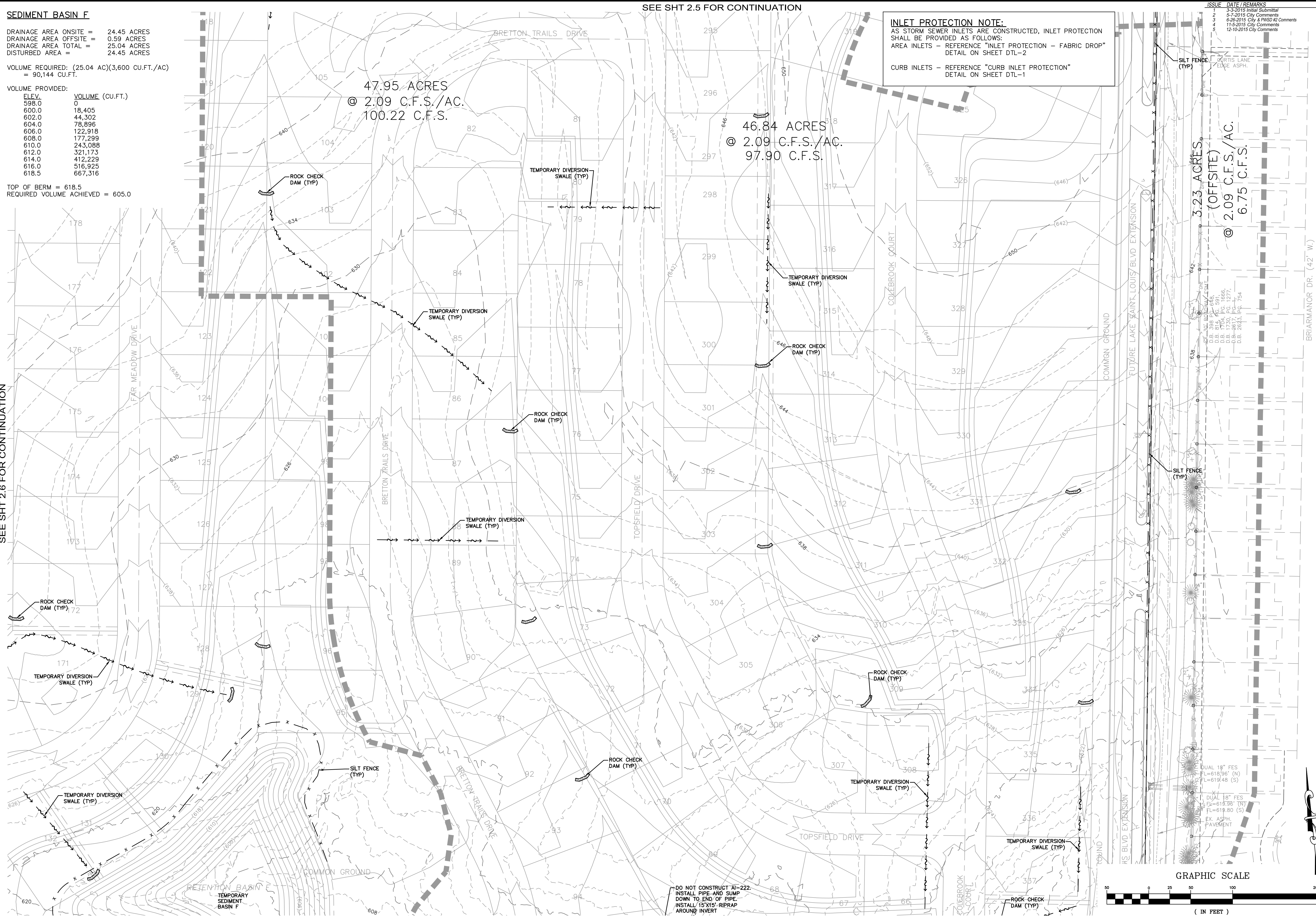
VOLUME REQUIRED: (25.04 AC)(3,600 CU.FT./AC)
 = 90,144 CU.FT.

ELEV.	VOLUME (CU.FT.)
598.0	0
600.0	18,405
602.0	44,302
604.0	78,896
606.0	122,918
608.0	177,299
610.0	243,088
612.0	321,173
614.0	412,229
616.0	516,925
618.5	667,316

TOP OF BERM = 618.5
 REQUIRED VOLUME ACHIEVED = 605.0

SEE SHT 2.6 FOR CONTINUATION

SEE SHT 2.5 FOR CONTINUATION



INLET PROTECTION NOTE:
 AS STORM SEWER INLETS ARE CONSTRUCTED, INLET PROTECTION SHALL BE PROVIDED AS FOLLOWS:
 AREA INLETS - REFERENCE "INLET PROTECTION - FABRIC DROP" DETAIL ON SHEET DTL-2
 CURB INLETS - REFERENCE "CURB INLET PROTECTION" DETAIL ON SHEET DTL-1

47.95 ACRES
 @ 2.09 C.F.S./AC.
 100.22 C.F.S.

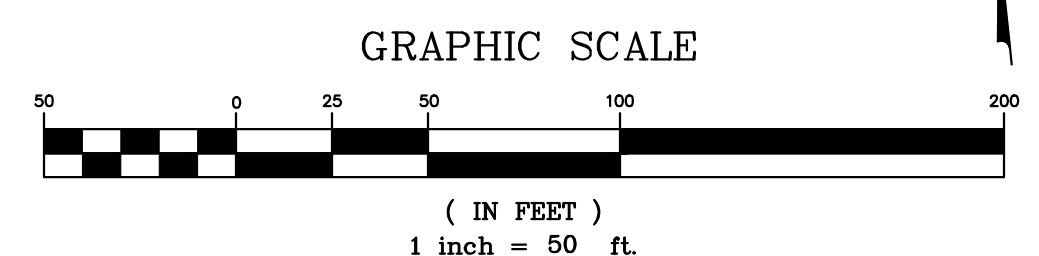
46.84 ACRES
 @ 2.09 C.F.S./AC.
 97.90 C.F.S.

3.23 ACRES
 (OFFSITE)
 @ 2.09 C.F.S./AC.
 6.75 C.F.S.

ISSUE	DATE / REMARKS
1	3-3-2015 Initial Submittal
2	6-7-2015 City Comments
3	6-26-2015 City & PWSO #2 Comments
4	11-9-2015 City Comments
5	12-10-2015 City Comments

D.B.	P.C.	P.T.	P.L.	754
638	638	638	638	638
639	639	639	639	639
640	640	640	640	640
641	641	641	641	641
642	642	642	642	642
643	643	643	643	643
644	644	644	644	644
645	645	645	645	645
646	646	646	646	646
647	647	647	647	647
648	648	648	648	648
649	649	649	649	649
650	650	650	650	650
651	651	651	651	651
652	652	652	652	652
653	653	653	653	653
654	654	654	654	654
655	655	655	655	655
656	656	656	656	656
657	657	657	657	657
658	658	658	658	658
659	659	659	659	659
660	660	660	660	660
661	661	661	661	661
662	662	662	662	662
663	663	663	663	663
664	664	664	664	664
665	665	665	665	665
666	666	666	666	666
667	667	667	667	667
668	668	668	668	668
669	669	669	669	669
670	670	670	670	670
671	671	671	671	671
672	672	672	672	672
673	673	673	673	673
674	674	674	674	674
675	675	675	675	675
676	676	676	676	676
677	677	677	677	677
678	678	678	678	678
679	679	679	679	679
680	680	680	680	680
681	681	681	681	681
682	682	682	682	682
683	683	683	683	683
684	684	684	684	684
685	685	685	685	685
686	686	686	686	686
687	687	687	687	687
688	688	688	688	688
689	689	689	689	689
690	690	690	690	690
691	691	691	691	691
692	692	692	692	692
693	693	693	693	693
694	694	694	694	694
695	695	695	695	695
696	696	696	696	696
697	697	697	697	697
698	698	698	698	698
699	699	699	699	699
700	700	700	700	700

DO NOT CONSTRUCT AT -222.
 INSTALL PIPE AND SUMP
 DOWN TO END OF PIPE.
 INSTALL 15'X15' RIPRAP
 AROUND INVERT



SEE SHT 2.9 FOR CONTINUATION

PROJECT TITLE

The Villages at
Shady Creek
 OFFALON, MISSOURI

THE STERLING CO.
 ENGINEERS & SURVEYORS
 5055 New Baumgardner Road
 St. Louis, Missouri 63129
 Ph 314-487-0440 Fax 314-487-8944
 www.sterling-eng-sur.com
 Corporate Certificate of Authority #001348

Date: 12/10/2015
 RODNEY ARNOLD
 LICENSE # PE-2002016612
 Civil Engineer

Lombardo Homes of St. Louis, LLC
 2299 Technology Drive, Suite 150
 Ofallon, Missouri 63368
 Ph. (636) 265-2710
 Fax (636) 695-3195
 www.lombardohomesstlouis.com

P+Z No.	P&Z NO
City No.	15-162-SP
Date:	12/10/2015
Job No.	14-03-087

Page No. **2.7**

IMP