

INLET PROTECTION NOTE:
 AS STORM SEWER INLETS ARE CONSTRUCTED, INLET PROTECTION SHALL BE PROVIDED AS FOLLOWS:
 AREA INLETS - REFERENCE "INLET PROTECTION - FABRIC DROP" DETAIL ON SHEET DTL-2
 CURB INLETS - REFERENCE "CURB INLET PROTECTION" DETAIL ON SHEET DTL-1

SEDIMENT BASIN E

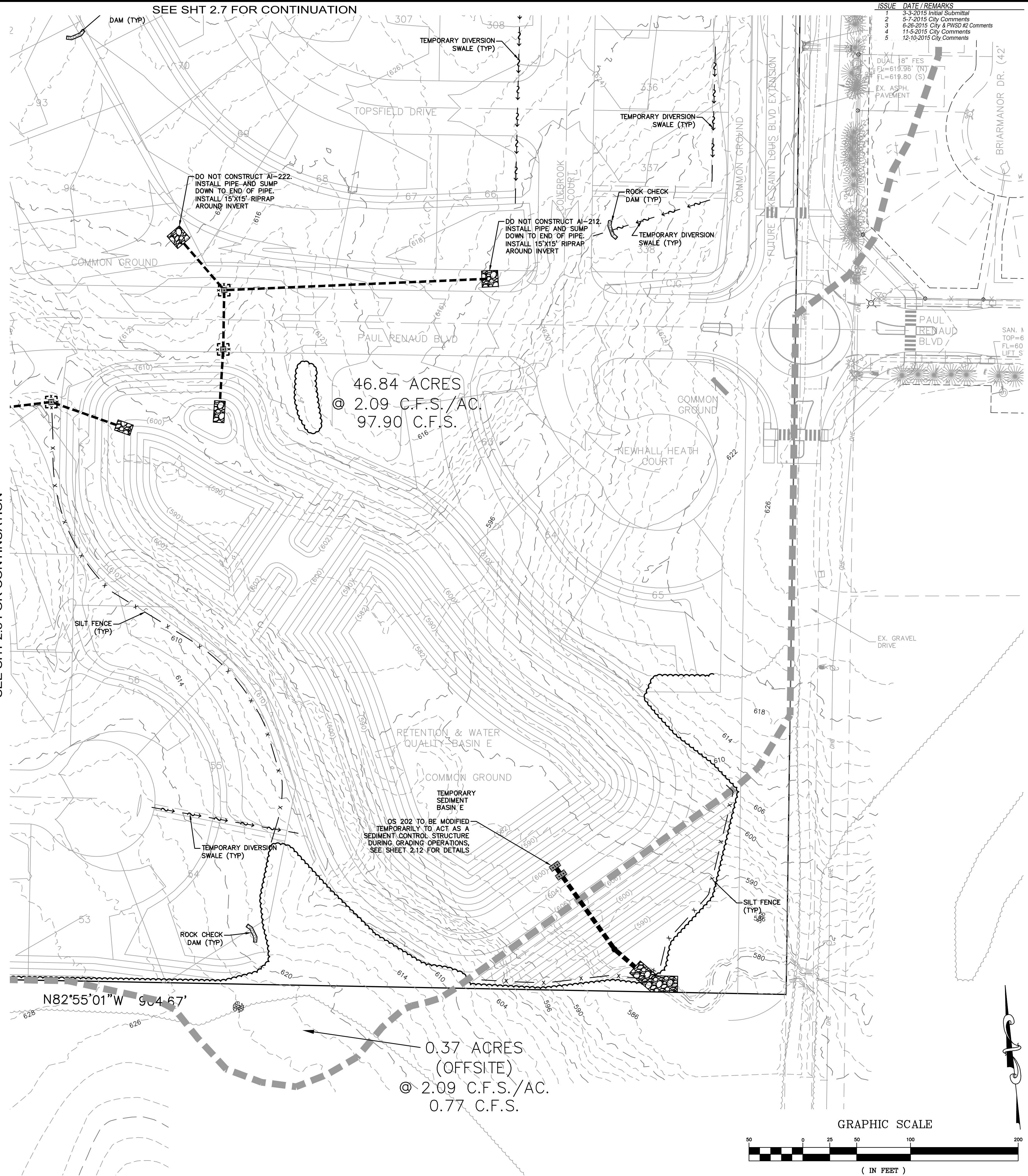
DRAINAGE AREA ONSITE = 46.84 ACRES
 DRAINAGE AREA OFFSITE = 3.60 ACRES
 DRAINAGE AREA TOTAL = 50.44 ACRES
 DISTURBED AREA = 46.38 ACRES

VOLUME REQUIRED: (50.44 AC)(3,600 CU.FT./AC) = 181,584 CU.FT.

VOLUME PROVIDED:

ELEV.	VOLUME (CU.FT.)
582.0	0
584.0	42,588
586.0	93,630
588.0	153,675
590.0	226,709
592.0	315,228
594.0	418,121
596.0	536,383
598.0	671,068
600.0	823,224
602.0	1,003,259
604.0	1,226,501
606.0	1,486,688

TOP OF BERM = 606.0
 REQUIRED VOLUME ACHIEVED = 589.0



ISSUE	DATE / REMARKS
1	3-3-2015 Initial Submittal
2	5-7-2015 City Comments
3	6-26-2015 City & PWSO #2 Comments
4	11-9-2015 City Comments
5	12-10-2015 City Comments

PROJECT TITLE
The Villages at
Shady Creek
 OFFALON, MISSOURI

THE STERLING CO.
ENGINEERS & SURVEYORS
 5055 New Baumgartner Road
 St. Louis, Missouri 63129
 Ph 314-487-0440 Fax 314-487-8944
 www.sterling-eng-sur.com
 Corporate Certificate of Authority #001348



Date: 12/10/2015
 RODNEY ARNOLD
 LICENSE # PE-2002016612
 Civil Engineer

Lombardo Homes of St. Louis, LLC
 2299 Technology Drive, Suite 150
 Ofallon, Missouri 63368
 Ph: (636) 265-2710
 Fax: (636) 695-3195
 www.lombardohomesstlouis.com

P+Z No. P&Z NO
 City No. 15-162-SP
 Date: 12/10/2015
 Job No. 14-03-087

Page No.
2.9
 IMP

Drawing name: V:\140387\GIS\Drawings\Improvements\140387\SWPPP.dwg Printed on: Dec 15, 2015 9:24am. Plotted by: bmoeller