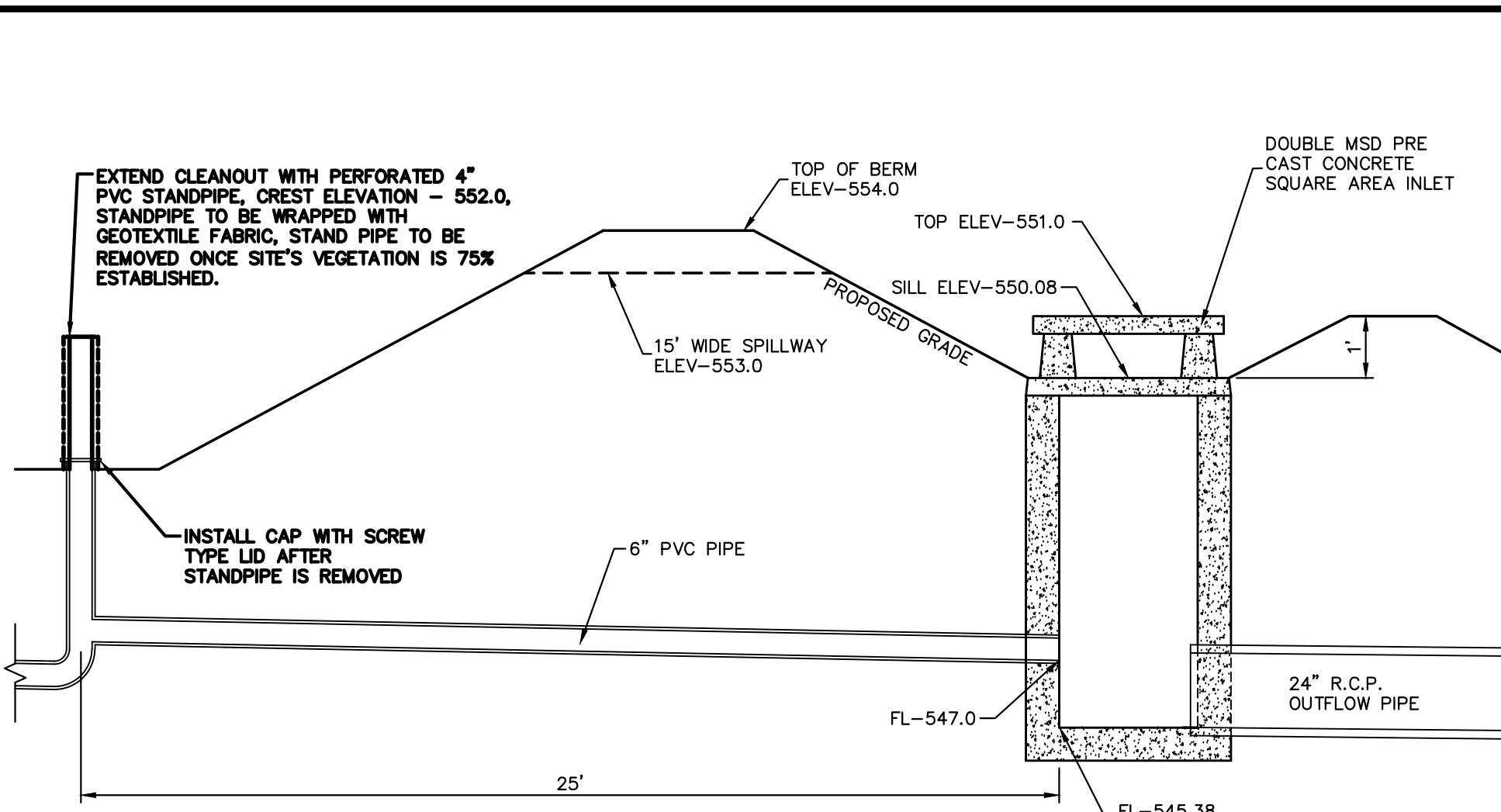
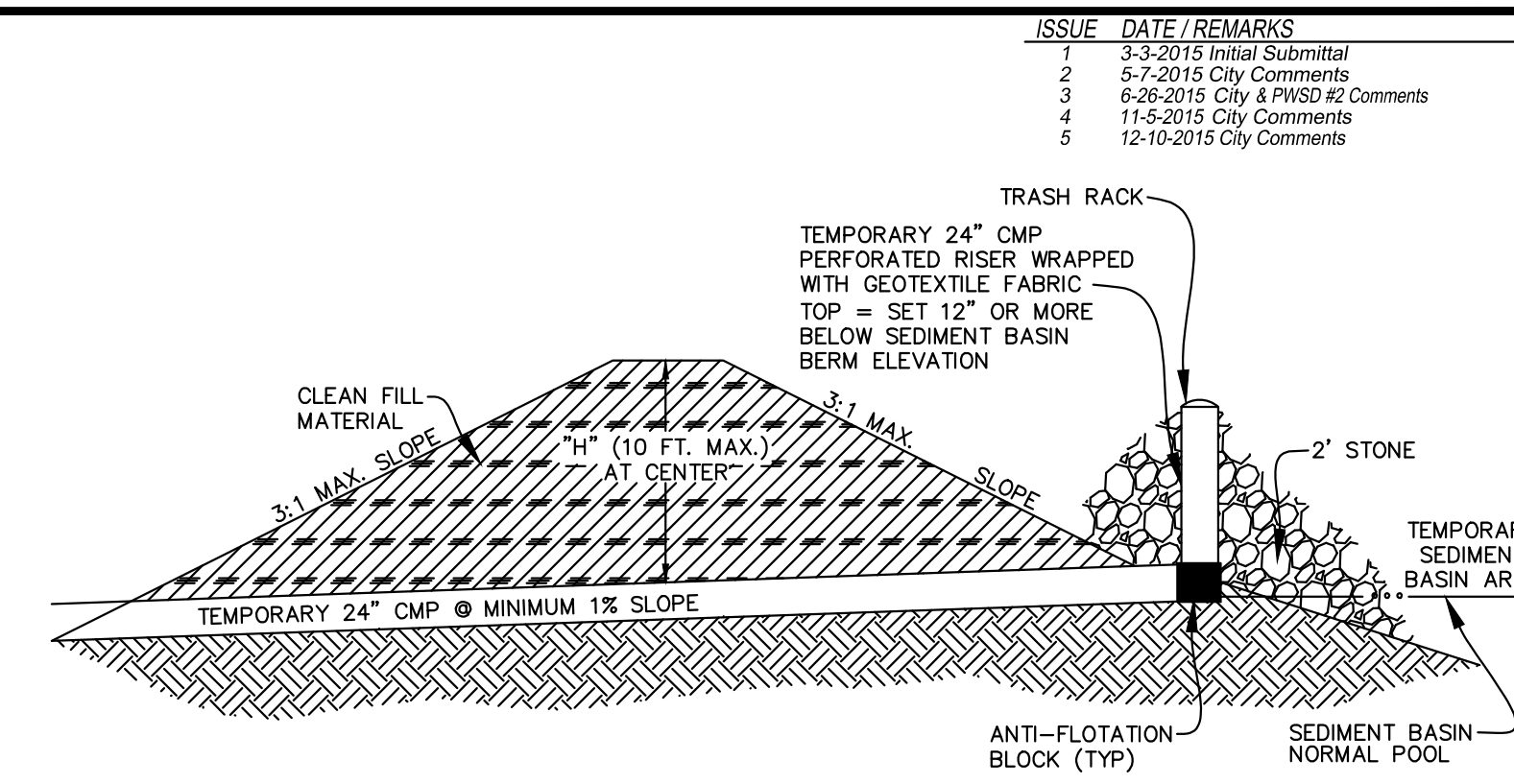


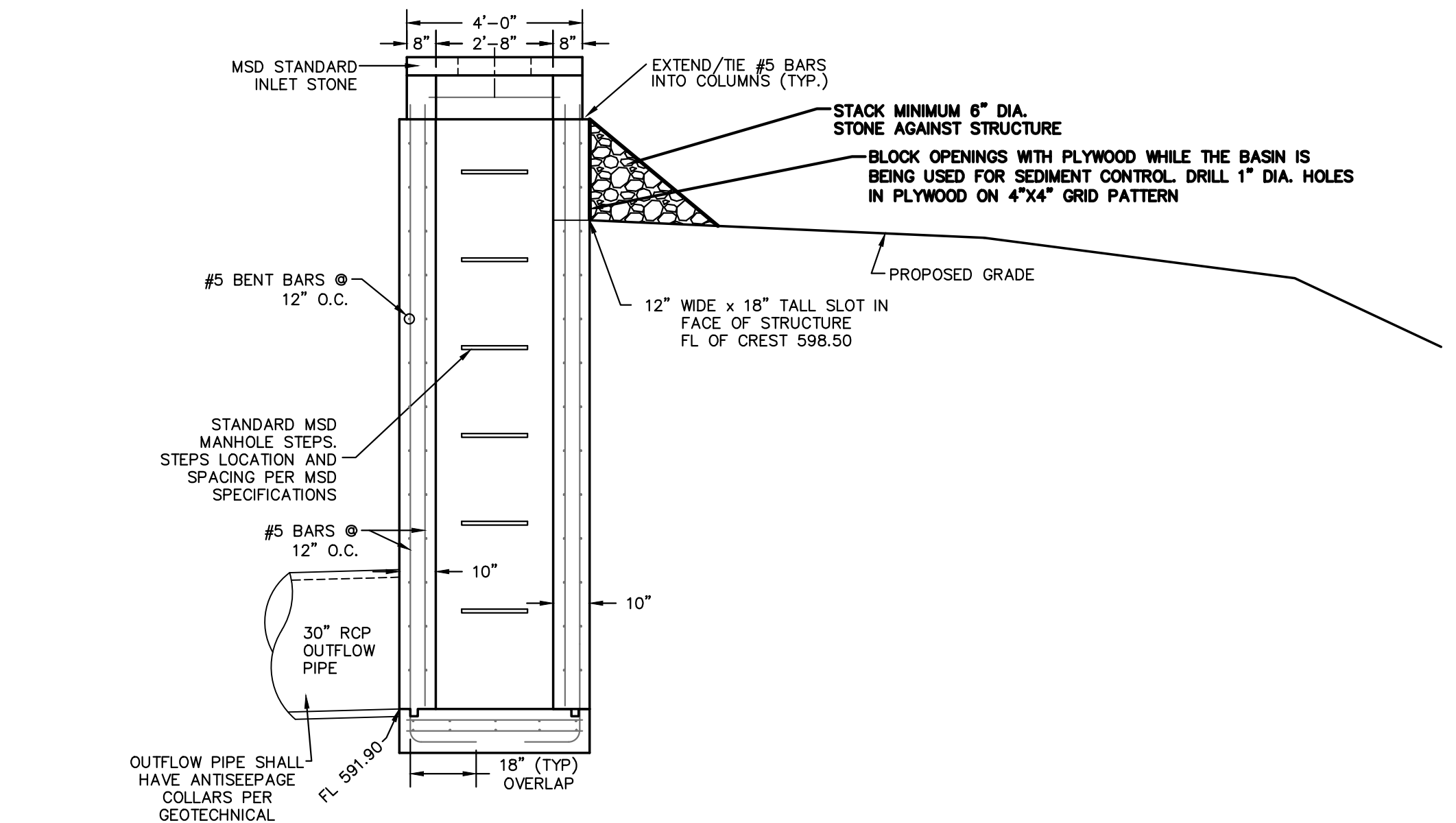
DOUBLE AREA INLET 4 SIDE SECTION MODIFIED FOR SEDIMENT CONTROL TEMPORARY SEDIMENT BASIN A
N.T.S.



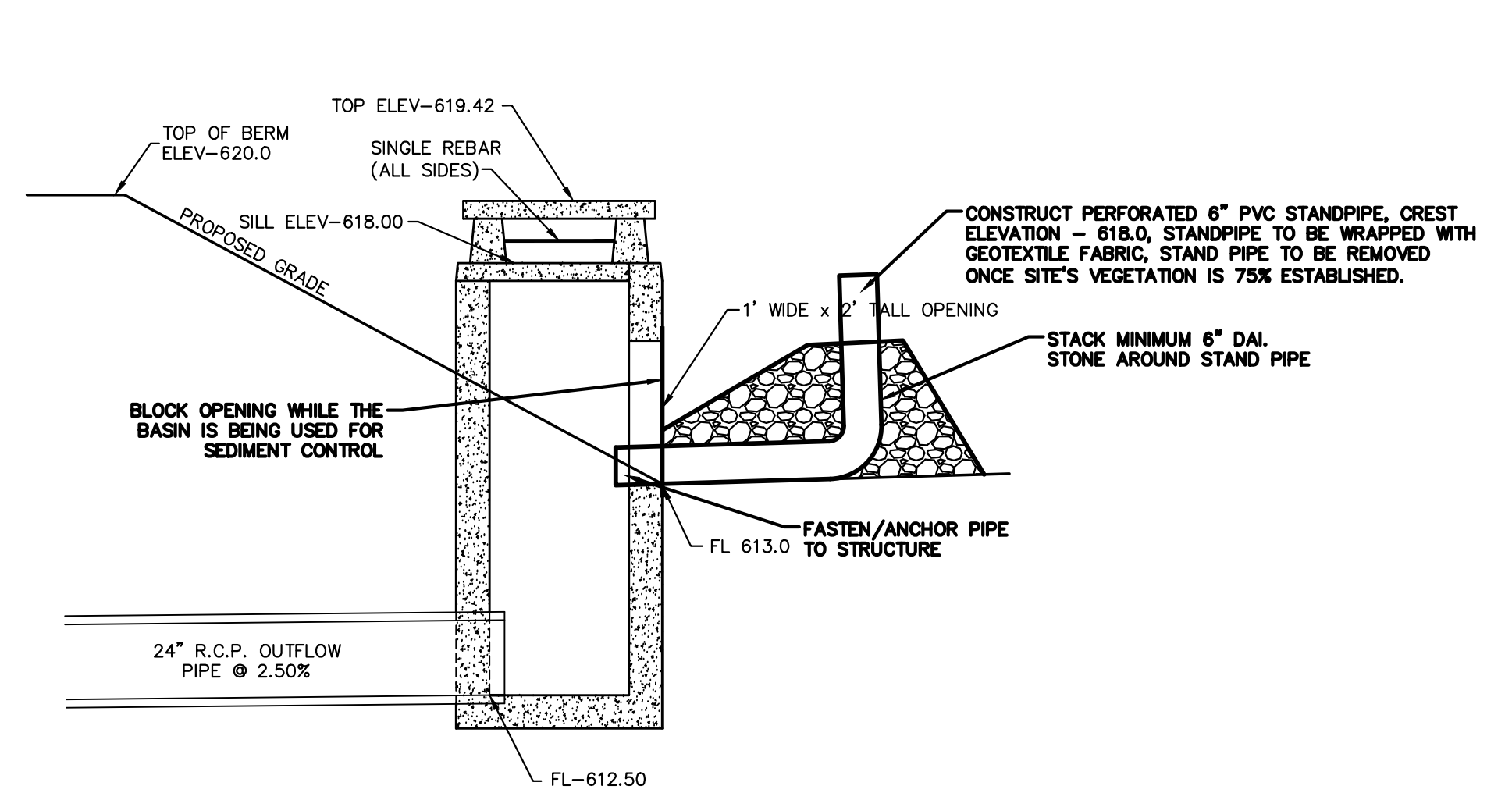
DOUBLE AREA INLET 17 SIDE SECTION MODIFIED FOR SEDIMENT CONTROL TEMPORARY SEDIMENT BASIN B
N.T.S.



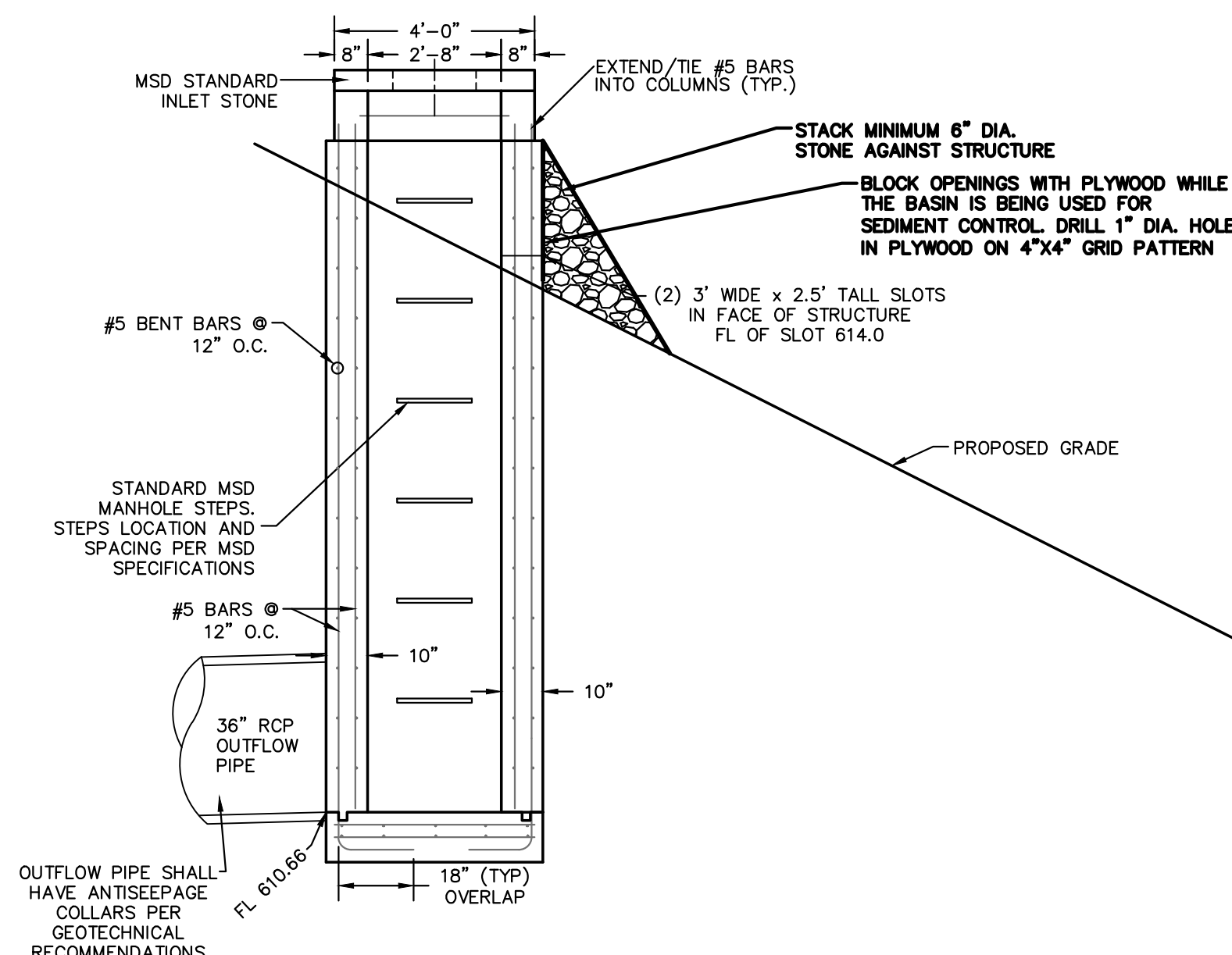
ALL TEMPORARY SEDIMENT BASIN FOR "INITIAL SWPPP" CONDITIONS
N.T.S.



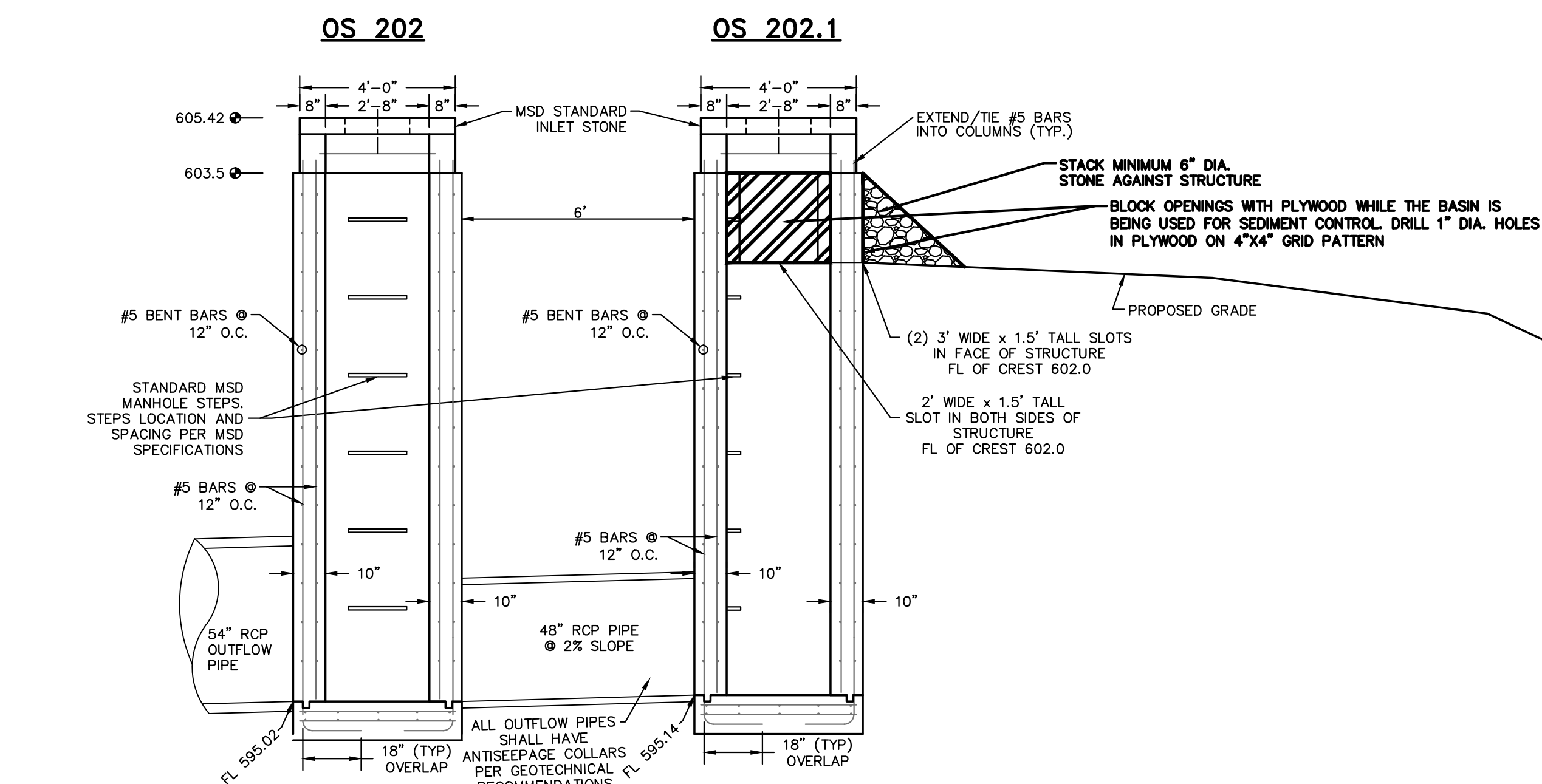
OUTFALL STRUCTURE 101 SECTION B-B MODIFIED FOR SEDIMENT CONTROL TEMPORARY SEDIMENT BASIN C
N.T.S.



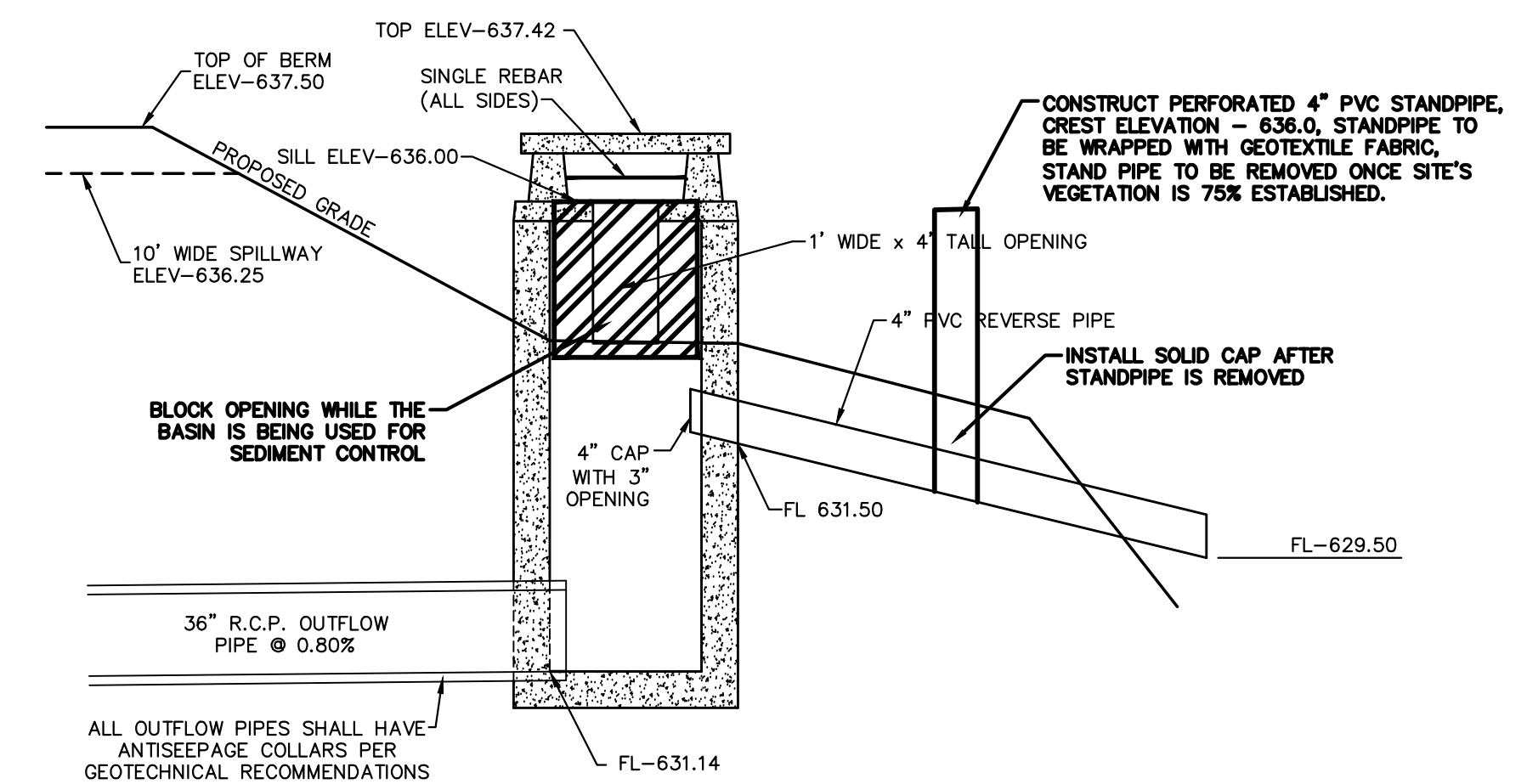
OUTFALL STRUCTURE 125 SECTION MODIFIED FOR SEDIMENT CONTROL TEMPORARY SEDIMENT BASIN D
N.T.S.



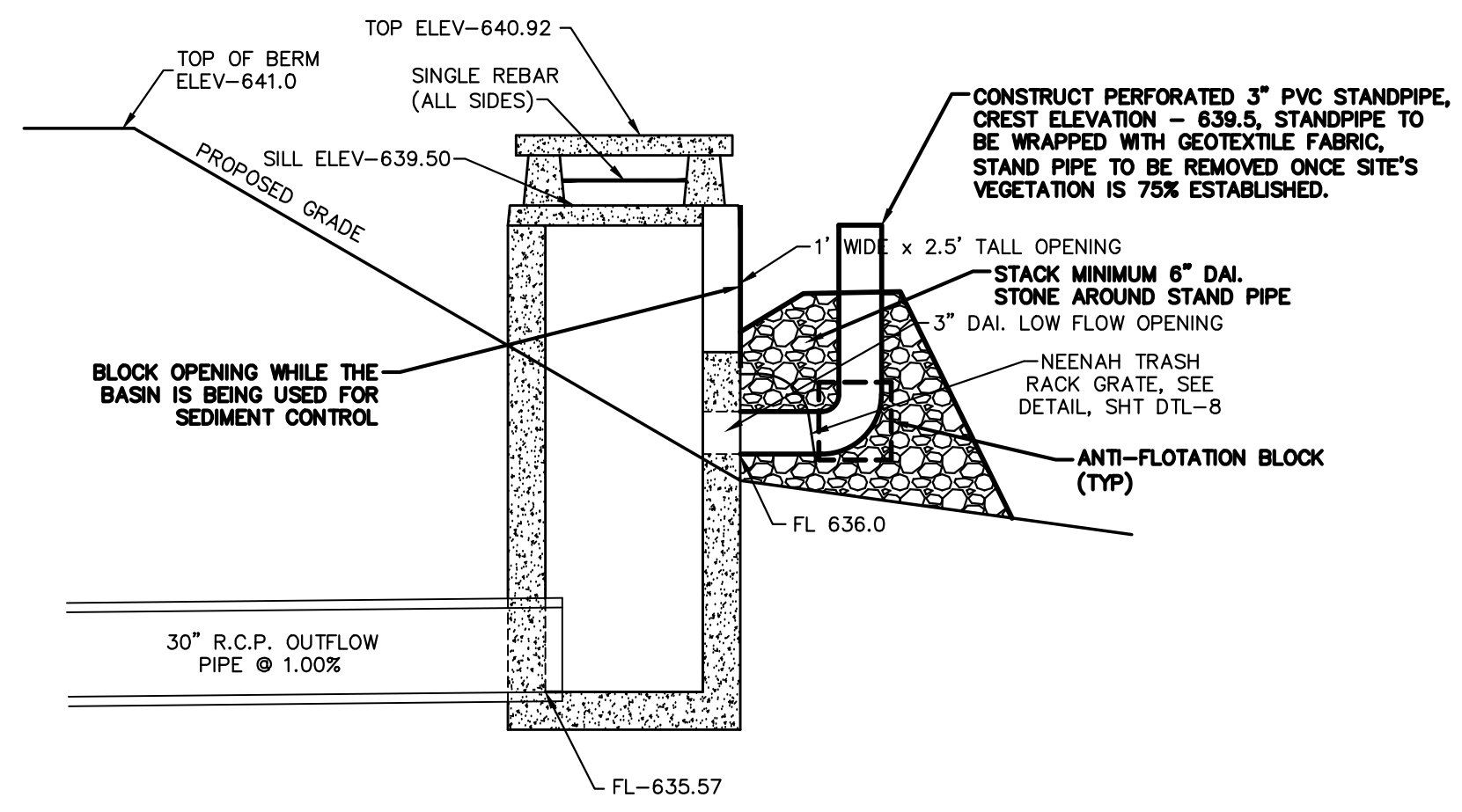
OUTFALL STRUCTURE 282 SECTION B-B MODIFIED FOR SEDIMENT CONTROL TEMPORARY SEDIMENT BASIN F
N.T.S.



OUTFALL STRUCTURE 202 & 202.1 SECTION B-B MODIFIED FOR SEDIMENT CONTROL TEMPORARY SEDIMENT BASIN E
N.T.S.



OUTFALL STRUCTURE 402 SIDE SECTION MODIFIED FOR SEDIMENT CONTROL TEMPORARY SEDIMENT BASIN G
N.T.S.



OUTFALL STRUCTURE 501 SIDE SECTION MODIFIED FOR SEDIMENT CONTROL TEMPORARY SEDIMENT BASIN H
N.T.S.

ISSUE	DATE / REMARKS
1	3-3-2015 Initial Submittal
2	5-7-2015 City Comments
3	6-26-2015 City & PWSD #2 Comments
4	11-9-2015 City Comments
5	12-10-2015 City Comments

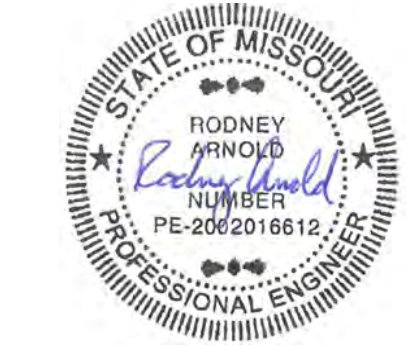
PROJECT TITLE

The Villages at
Shady Creek

OFFALON, MISSOURI

THE **STERLING** CO.
ENGINEERS & SURVEYORS

5055 New Baumgartner Road
St. Louis, Missouri 63129
Ph 314-487-0440 Fax 314-487-8944
www.sterling-eng-survey.com
Corporate Certificate of Authority #001348



Date: 12/10/2015
RODNEY ARNOLD
LICENSE # PE-2002016612
Civil Engineer

Lombardo Homes of St. Louis, LLC

2299 Technology Drive, Suite 150
Offalton, Missouri 63368
Ph. (636) 265-2710
Fax (636) 695-3195
www.lombardohomesstlouis.com

SWPPP DETAILS

P+Z No. P&Z NO
City No. 15-162-SP
Date: 12/10/2015
Job No. 14-03-087

Page No.

2.12

IMP